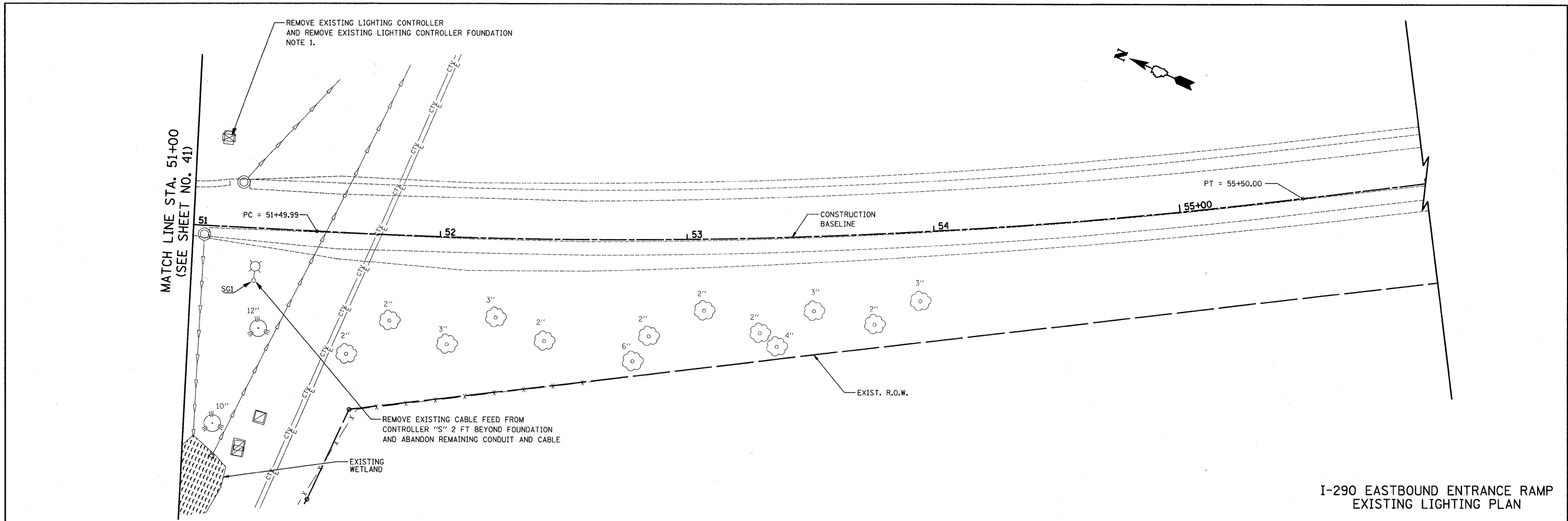
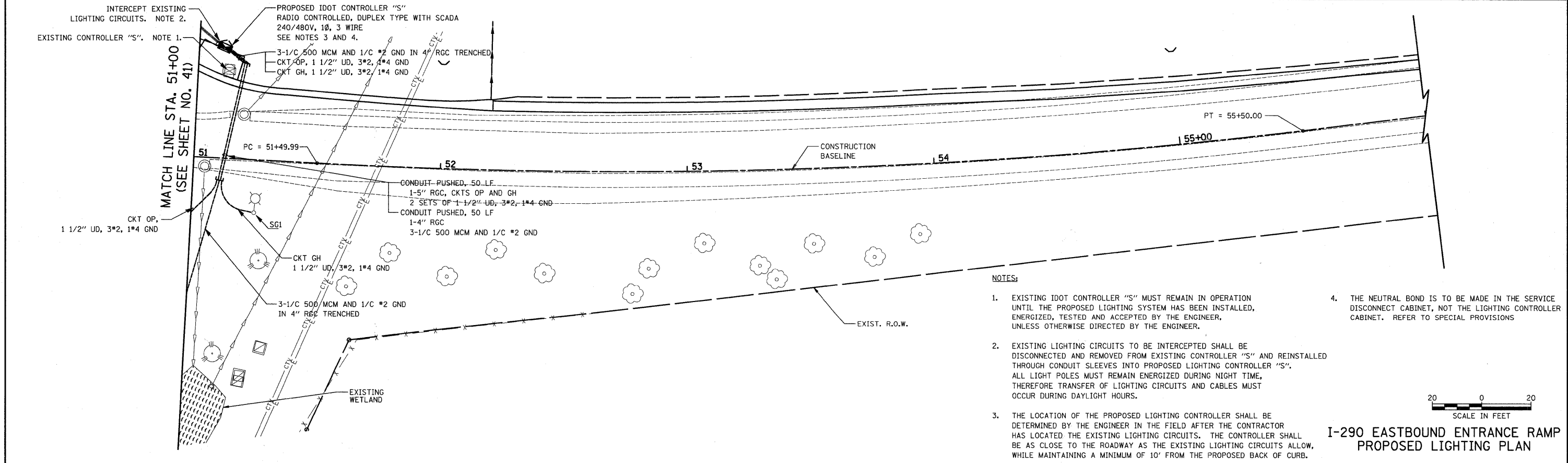


PLAN	SURVEYED	DATE
NOTE BOOK	ALIGNED	BY
NO.	RT. OF WAY CHECKED	
	CADD FILE NAME	

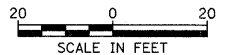
PROFILE	SURVEYED	DATE
NOTE BOOK	CHECKED	BY
NO.	S.M. NOTED	
	STRUCTURE NOTATIONS CHKD	



I-290 EASTBOUND ENTRANCE RAMP
EXISTING LIGHTING PLAN



- NOTES:
- EXISTING IDOT CONTROLLER "S" MUST REMAIN IN OPERATION UNTIL THE PROPOSED LIGHTING SYSTEM HAS BEEN INSTALLED, ENERGIZED, TESTED AND ACCEPTED BY THE ENGINEER, UNLESS OTHERWISE DIRECTED BY THE ENGINEER.
 - EXISTING LIGHTING CIRCUITS TO BE INTERCEPTED SHALL BE DISCONNECTED AND REMOVED FROM EXISTING CONTROLLER "S" AND REINSTALLED THROUGH CONDUIT SLEEVES INTO PROPOSED LIGHTING CONTROLLER "S". ALL LIGHT POLES MUST REMAIN ENERGIZED DURING NIGHT TIME, THEREFORE TRANSFER OF LIGHTING CIRCUITS AND CABLES MUST OCCUR DURING DAYLIGHT HOURS.
 - THE LOCATION OF THE PROPOSED LIGHTING CONTROLLER SHALL BE DETERMINED BY THE ENGINEER IN THE FIELD AFTER THE CONTRACTOR HAS LOCATED THE EXISTING LIGHTING CIRCUITS. THE CONTROLLER SHALL BE AS CLOSE TO THE ROADWAY AS THE EXISTING LIGHTING CIRCUITS ALLOW, WHILE MAINTAINING A MINIMUM OF 10' FROM THE PROPOSED BACK OF CURB.
 - THE NEUTRAL BOND IS TO BE MADE IN THE SERVICE DISCONNECT CABINET, NOT THE LIGHTING CONTROLLER CABINET. REFER TO SPECIAL PROVISIONS



I-290 EASTBOUND ENTRANCE RAMP
PROPOSED LIGHTING PLAN

FILE NAME = ...oad\sheet\2349.Light 05.dgn	USER NAME = djk	DESIGNED - EE	REVISED -	STATE OF ILLINOIS DEPARTMENT OF TRANSPORTATION	IL ROUTE 53 (BIESTERFIELD ROAD) @ I-290 LIGHTING PLAN	F.A.U. RTE. 1339	SECTION 09-00054-00-CH	COUNTY COOK	TOTAL SHEETS 88	SHEET NO. 44		
PLOT SCALE = 20.0000' / IN.	CHECKED - DEM	REVISOR -	REVISOR -			SCALE: 1" = 20'	SHEET NO. 5 OF 5 SHEETS	STA. 51+00.0 TO STA. 56+00.0	CONTRACT NO. 63505			
PLOT DATE = 7/26/2010	DATE - 07-07-10	REVISOR -	REVISOR -			FED. ROAD DIST. NO. 1 [ILLINOIS] FED. AID PROJECT ARA-M-90031691						