

Benchmark:

Rim of Traffic Signal Manhole located approximately 13 feet East of I-290 Bridge (North side of Biesterfeld Road). Elev. = 726.11

Existing Structure:

Existing Structure No. 016-0960 was constructed in 1968. The bridge contains two continuous built-up I girder spans over the roadway with vaulted approaches at each end. The vaulted approach spans are constructed with PPC I-beams. The existing structure was widened in 1989. The length of bridge is 283 feet Bk. to Bk. Abutments with an 77'-0" out to out. The foundations are spread footing on concrete piles.

Traffic will be maintained (staged) during construction.

GENERAL NOTES

1. Reinforcement bars shall conform to the requirements of ASTM A 706 Gr 60. See Special Provisions.
2. Reinforcement bars designated (E) shall be epoxy coated.
3. Plan dimensions and details relative to existing plans are subject to nominal construction variations. The Contractor shall field verify existing dimensions and details affecting new construction and make necessary approved adjustments prior to construction or ordering of materials. Such variations shall not be cause for additional compensation for a change in scope of the work, however, the Contractor will be paid for the quantity actually furnished at the unit price bid for the work.
4. Existing reinforcement bars extending into the removal area shall be cleaned, straightened and incorporated into the new construction. Any reinforcement bars that are damaged during concrete removal shall be replaced with an approved bar splicer or anchorage system. Cost included with Concrete Removal.
5. Joint openings shall be adjusted according to Article 520.04 of the Std. Specs. when the deck is poured at an ambient temperature other than 50°F.

INDEX OF SHEETS

- S1 General Plan
- S2 Stage Construction Details
- S3 Concrete Removal Details
- S4 Deck & Approach Raised Median Details
- S5 Expansion Joint Details

ROUTE NO.	SECTION	COUNTY	TOTAL SHEETS	SHEET NO.
F.A.U. 1339	09-00054-00-CH	COOK	88	55
FED. ROAD DIST. NO. 7	ILLINOIS	FED. AID PROJECT - AAA-M-98835691		

Contract # 63505

TOTAL BILL OF MATERIAL

ITEM	UNIT	QUANTITY
Concrete Removal	Cu. Yd.	26.5
Protective Shield	Sq. Yd.	70
Concrete Superstructure	Cu. Yd.	10.8
Reinforcement Bars, Epoxy Coated	Pound	1,370
Preformed Joint Seal, 4"	Foot	79
Bridge Deck Concrete Overlay	Sq. Yd.	31

* See Special Provision.

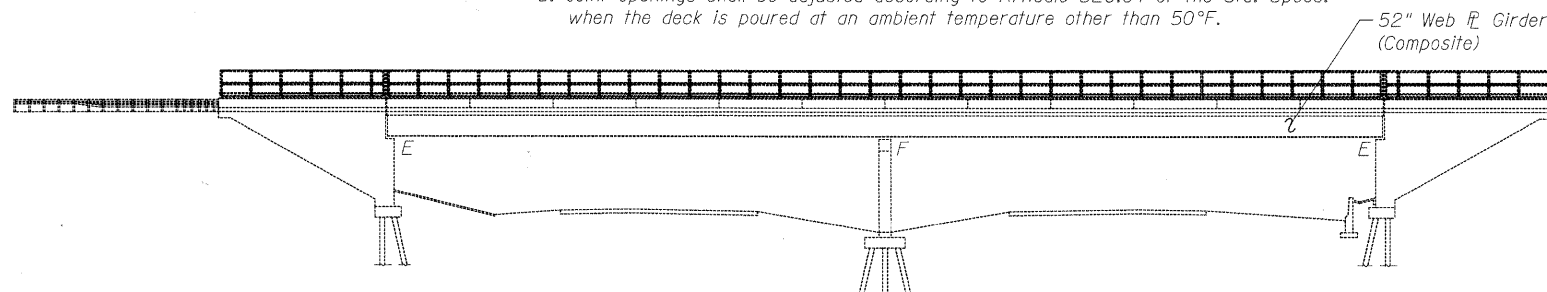
CIVILTECH ENGINEERING, INC.
GREGORY J. HATLESTAD, S.E.



G. Hatlestad
GREGORY J. HATLESTAD, S.E.
081-005562

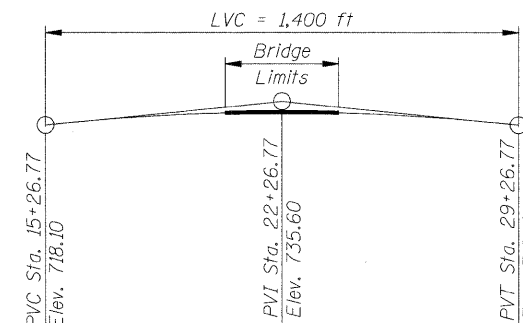
EXP 11-30-2010

DATE 7-7-2010



ELEVATION

(Looking North)

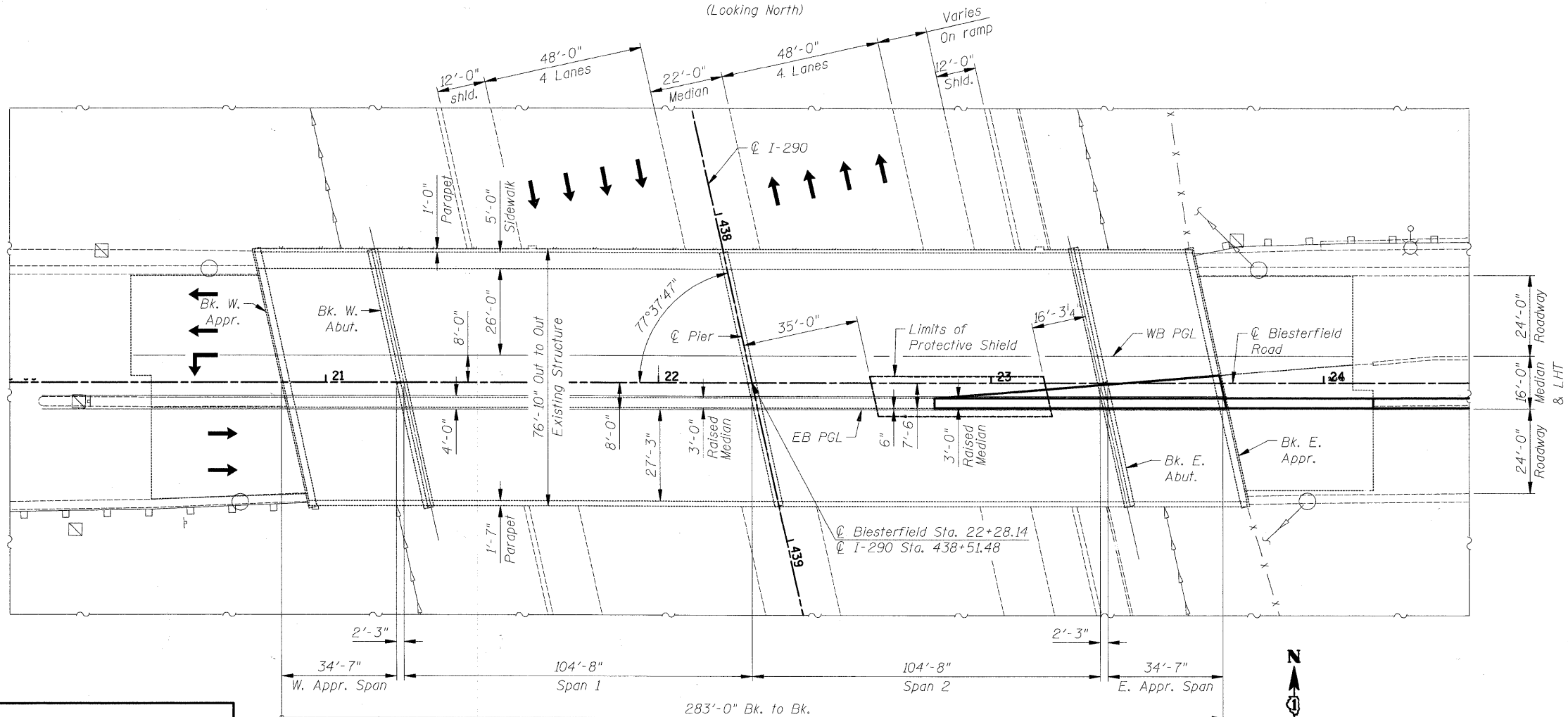


**PROFILE GRADE LINE
BIESTERFELD ROAD**

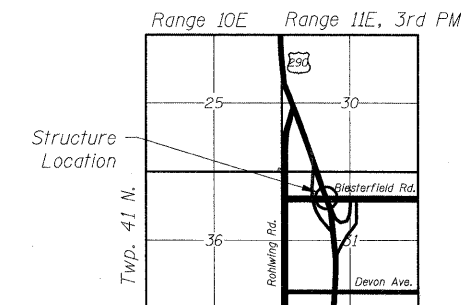
DESIGN SPECIFICATIONS
2002 AASHTO Standard Specifications

DESIGN STRESSES
FIELD UNITS

f'c = 3,500 psi
fy = 60,000 psi (Reinforcement)



PLAN



LOCATION SKETCH

S1 OF S5

STATE OF ILLINOIS
DEPARTMENT OF TRANSPORTATION

GENERAL PLAN
F.A.U. 1339 BIESTERFELD ROAD OVER I-290
SECTION 09-00054-00-CH
COOK COUNTY
STATION 22+28.14, STRUCTURE NO. 016-0960
Scale: None
Date: July 7, 2010
By: M. Lange
Checked By: G. Hatlestad