

F.A.P. RTE.	SECTION	COUNTY	TOTAL SHEETS	SHEET NO.
754	101M-1	BOONE	74	1
		ILLINOIS	CONTRACT NO. 64E34	

STATE OF ILLINOIS
DEPARTMENT OF TRANSPORTATION
DIVISION OF HIGHWAYS

PROPOSED
HIGHWAY PLANS

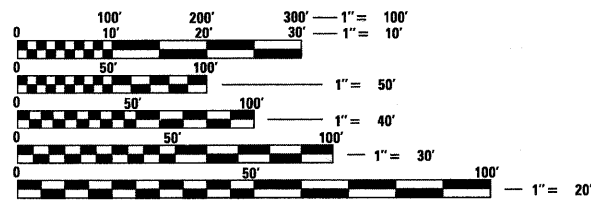
FAP ROUTE 754 (IL 76)
SECTION 101M-1
PROJECT HSIP-0754(011)
INTERSECTION IMPROVEMENT
BOONE COUNTY

INDEX OF SHEETS

- 1 Cover Sheet
- 1 Index of Sheets
- 2 - 3 General Notes
- 4 - 5 Summary of Quantities
- 6 - 10 Typical Sections and Staging Typicals
- 11 - 16 Schedule of Quantities
- 17 Bituminous Schedule
- 18 - 20 Horizontal and Vertical Control
- 21 - 23 Plan and Profile Sheets
- 24 - 29 Staging Details
- 30 Pavement Elevation Sheet
- 31 - 33 Erosion Control, & R.O.W. Details
- 34 - 36 Seeding and Pavement Marking Details
- 37 Hot-Mix Asphalt Shoulders (Dist. Std 23.4a)
- 37 Delineator and Post Orientation (Dist Std 37.4)
- 37 Typical Benching Detail on Existing Embankment (Dist. Std 50.4)
- 37 Tree Replacement Schedule(90.4)
- 38 Drain for Aggregate Base Course (Dist. Std 96.4)
- 38 Erosion Control Details for Silt Fence (Dist Std 29.2)
- 39 Superelevation Transition on Two-Lane Highway (Dist. Std 45.2)
- 39 Witness Marker & Permanent survey Markers, Type II (Dist Std 66.2)
- 40 Two and Three Center Curve Data (Dist. Std 92.2)
- 41 Storm Water Pollution Prevention Plan Erosion Control Plan (Dist Std 2.1)
- 42 Entrance and Side roads with 2.4m(8') Hot-Mix Asphalt Shoulders (Dist Std 22.1)
- 43 Traffic Control for Road Closure (Dist Std 40.1)
- 44 - 46 Typical Pavement Markings (Dist Std 41.1)
- 47 Details of Planting and Bracing Tree Replacement Schedule (Dist Std 92.1)
- 48 - 74 Cross Sections

HIGHWAY STANDARDS

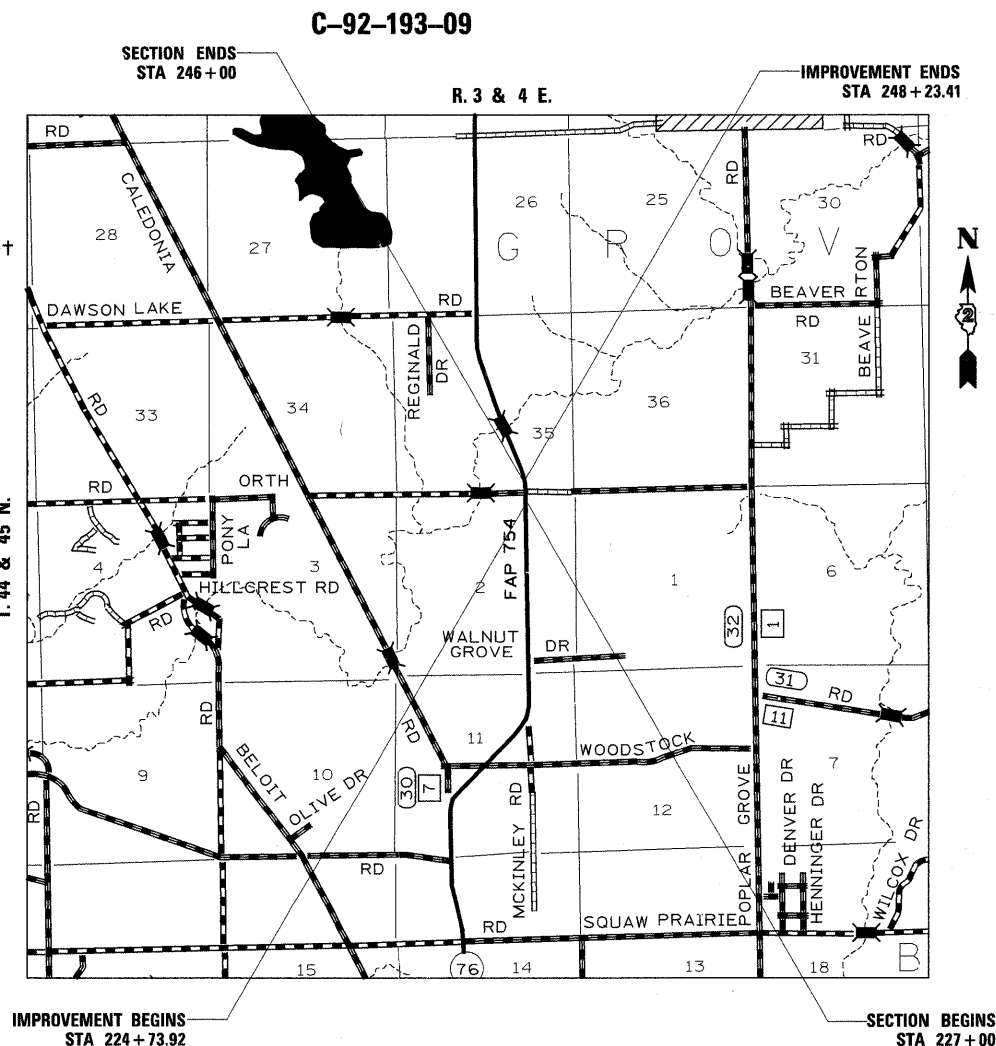
- 000001 - 05 Standard Symbols, Abbreviations, and Patterns
- 280001 - 05 Temporary Erosion Control Systems
- 482001 - 02 HMA Shoulder Adjacent to Flexible Pavement
- 542301 - 02 Precast Reinforced Concrete Flared End Sections
- 542401 - 01 Metal End Sections for Pipe Culverts
- 606001 - 04 Conc. Curb Type B& Combo Conc. C&G
- 606301 - 04 PCC Island & Medians
- 635001 - 01 Delineators
- 666001 - 01 Right-Of-Way Markers
- 701006 - 03 Off Road Operations, 2L, 2W, 4.5m(15') to 600 mm (24"), From Edge of Pavement
- 701201 - 03 Typical Application of Traffic Control Standard
- 701301 - 03 Lane Closure, 2L, 2W, Short Time Operations
- 701311 - 03 Lane Closure, 2L, 2W, Moving -Day Only
- 701326 - 03 Typical Application of Traffic Control Standard
- 701331 - 03 Lane Closure, 2L, 2W, with Run-around, for Speed>45 MPH
- 701701 - 06 Urban Lane Closure, Multilane Lane Intersection.
- 701901 - 01 Traffic Control Devices
- 704001 - 06 Temporary Concrete Barrier
- 720011 - 01 Metal Posts for Signs, Markers & Delineators
- 728001 - 01 Telescoping Steel Sign Support
- 729001 - 01 Application Types A and B Metal Posts (for signs and markers)
- 780001 - 02 Typical Pavement Markings
- 781001 - 03 Typical Applications Raised Reflective Pavement Markers
- 836001 Light Pole Foundations



FULL SIZE PLANS HAVE BEEN PREPARED USING STANDARD ENGINEERING SCALES. REDUCED SIZED PLANS WILL NOT CONFORM TO STANDARD SCALES. IN MAKING MEASUREMENTS ON REDUCED PLANS, THE ABOVE SCALES MAY BE USED.

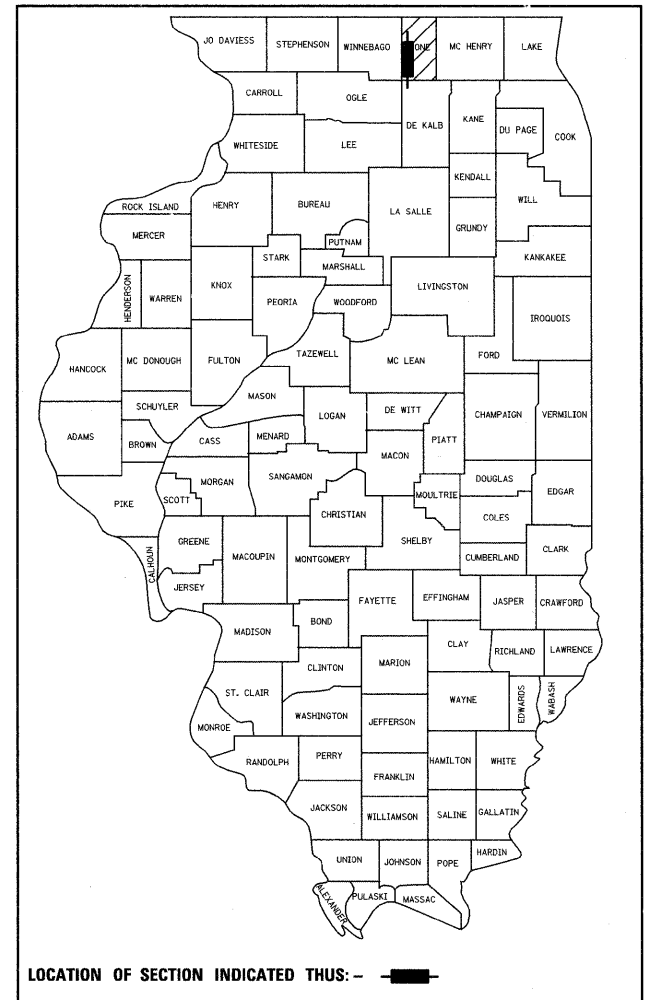
J.U.L.I.E.
 JOINT UTILITY LOCATION INFORMATION FOR EXCAVATION
 1-800-892-0123
 OR 811

PROJECT ENGINEER : AHMAD EL-AHMAD (815)-284-5944
PROJECT MANAGER : MASOOD AHMAD
 BELVIDERE TOWNSHIP : SECTION 2
 POPLAR GROVE TOWNSHIP : SECTION 35
CONTRACT NO. 64E34



GROSS LENGTH OF SECTION = 1900 FT = 0.359 MILE
NET LENGTH OF SECTION = 1900 FT = 0.359 MILE

D-92-089-08



LOCATION OF SECTION INDICATED THUS: - [black rectangle] -

STATE OF ILLINOIS
 DEPARTMENT OF TRANSPORTATION
 DIVISION OF HIGHWAYS

SUBMITTED June 9 2010
George F. Ryan
 DEPUTY DIRECTOR OF HIGHWAYS, REGION ENGINEER

August 13 2010
Scott E. Stitt, P.E.
 acting ENGINEER OF DESIGN AND ENVIRONMENT

August 13 2010
Christine M. Reed
 DIRECTOR OF HIGHWAYS, CHIEF ENGINEER

PRINTED BY THE AUTHORITY
OF THE STATE OF ILLINOIS
DISTRICT 2, DIXON