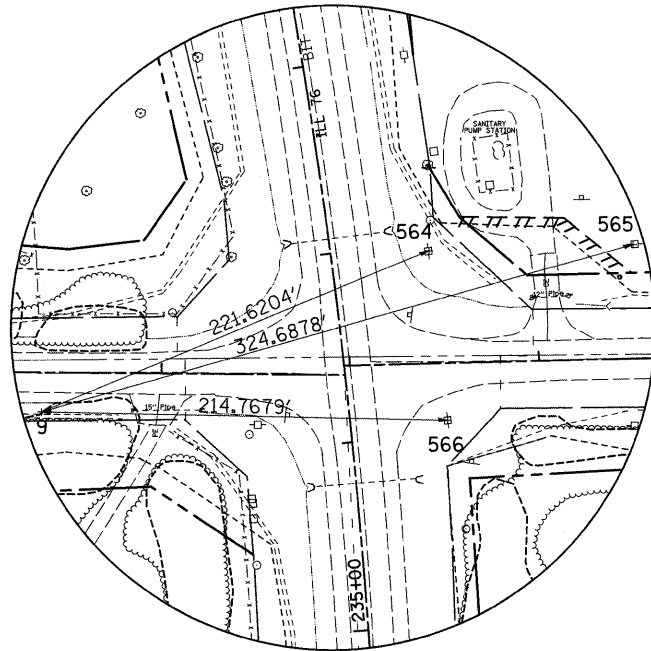
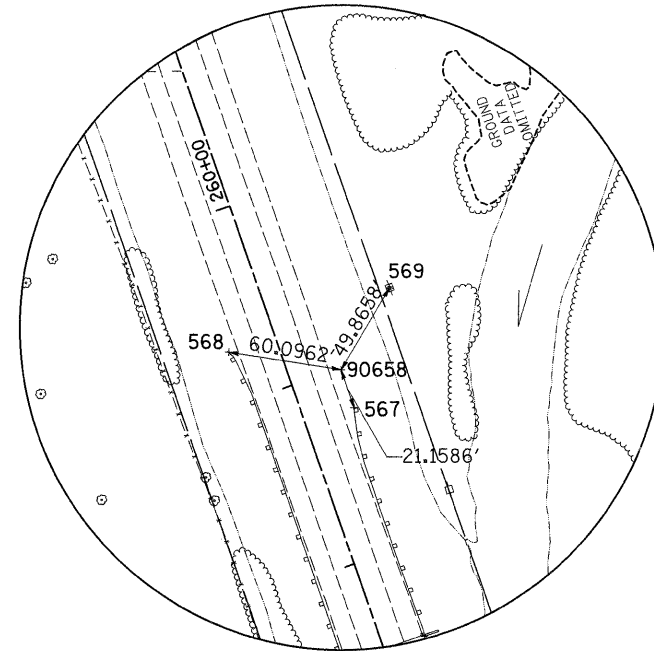


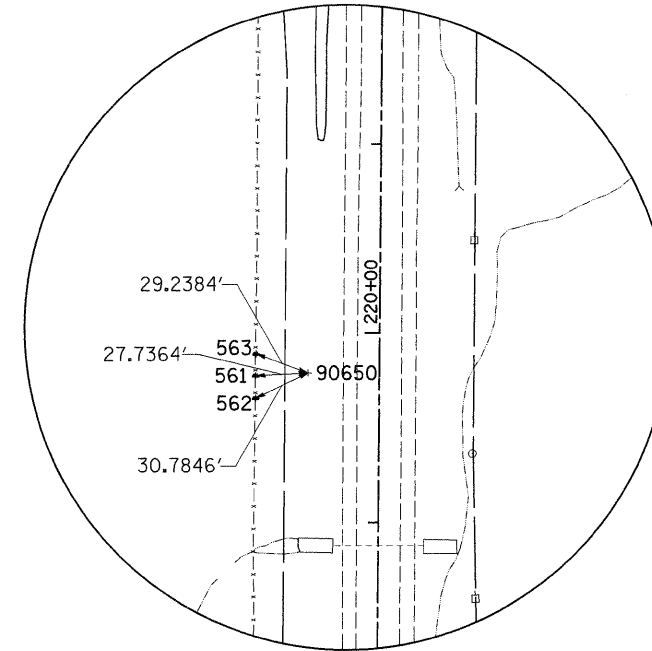
HORIZONTAL & VERTICAL CONTROL



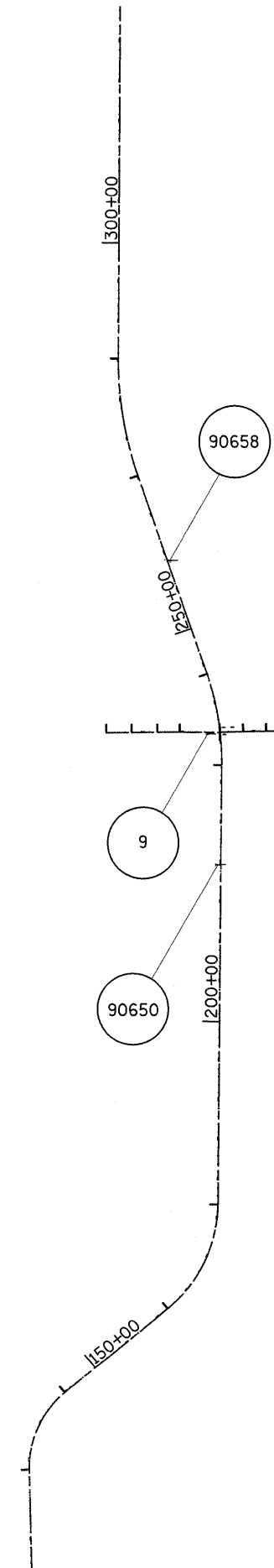
HORIZONTAL CONTROL POINT NO. 9



HORIZONTAL CONTROL POINT NO. 90658



HORIZONTAL CONTROL POINT NO. 90650



REFERENCE TIES				
POINT	CHAIN	STATION	OFFSET	DESCRIPTION
561	PIL76	219+77.17	65.4435' LT	FENCE POST, SHINER
562	PIL76	219+65.24	65.417' LT	FENCE POST, SHINER
563	PIL76	219+88.65	65.2585' LT	FENCE POST, SHINER
564	PIL76	236+94.64	51.8236' RT	POWER POLE, SHINER
565	PIL76	236+84.36	159.1112' RT	POWER POLE, SHINER
566	PIL76	236+06.25	51.2902' RT	POWER POLE, SHINER
567	PIL76	258+78.00	27.1218' RT	GUARDRAIL STEEL PLATE BEAM, END
568	PIL76	259+27.56	25.7263' LT	GUARDRAIL STEEL PLATE BEAM, END
569	PIL76	259+31.20	65.4437' RT	POWER POLE, SHINER

HORIZONTAL CONTROL POINTS							
POINT	NORTH	EAST	ELEVATION	CHAIN	STATION	OFFSET	DESCRIPTION
9	2062385.7659	845297.1504	859.0199	PIL76	236+34.28	161.7029' LT	PIN
90658	2064572.9332	844819.3038	830.8899	PIL76	259+99.16	27.2327' RT	E-LEVEL Z PHOTO CONTROL H. & V., PIN
90650	2060749.2457	845431.0552	840.4090	PIL76	219+78.74	37.7517' LT	E-LEVEL Z PHOTO CONTROL H. & V., PIN