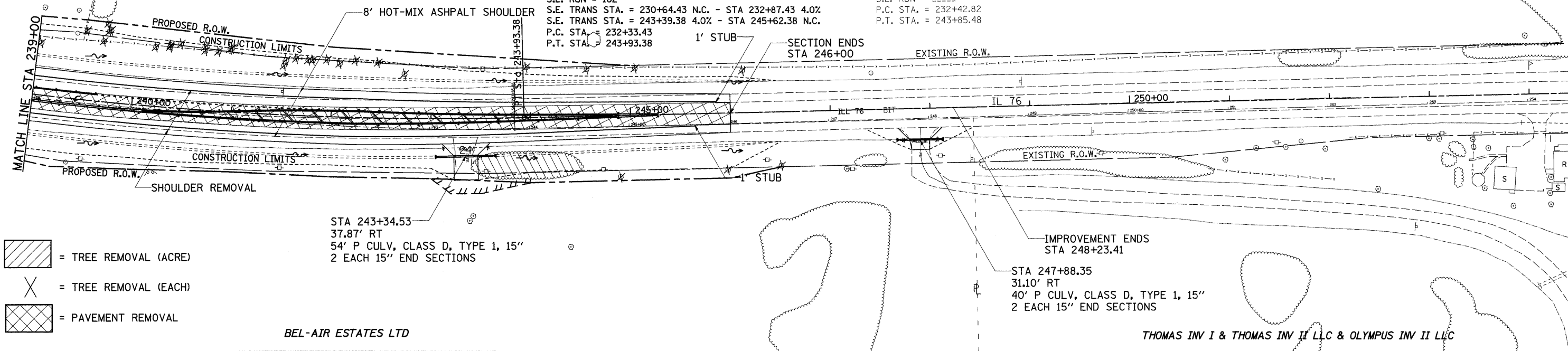


DATE	
BY	
REVIEWED	
PLANNED	
NOTE BOOK	
NO.	

DATE	
BY	
REVIEWED	
PLANNED	
NOTE BOOK	
NO.	

PROP. CURVE 70360 SUE RODAKOWSKI  
 PI STA. = 238+19.18  
 $\Delta = 19^\circ 41' 31''$  (LT)  
 $D = 1^\circ 41' 52''$   
 $R = 3,375.00'$   
 $T = 585.75'$   
 $L = 1,159.95'$   
 $E = 50.45'$   
 $S.E. = 4.0\%$   
 $T.R. = 61'$   
 $S.E. RUN = 162'$   
 $S.E. TRANS STA. = 230+64.43$  N.C. - STA 232+87.43 4.0%  
 $S.E. TRANS STA. = 243+39.38$  4.0% - STA 245+62.38 N.C.  
 $P.C. STA. = 232+33.43$   
 $P.T. STA. = 243+93.38$

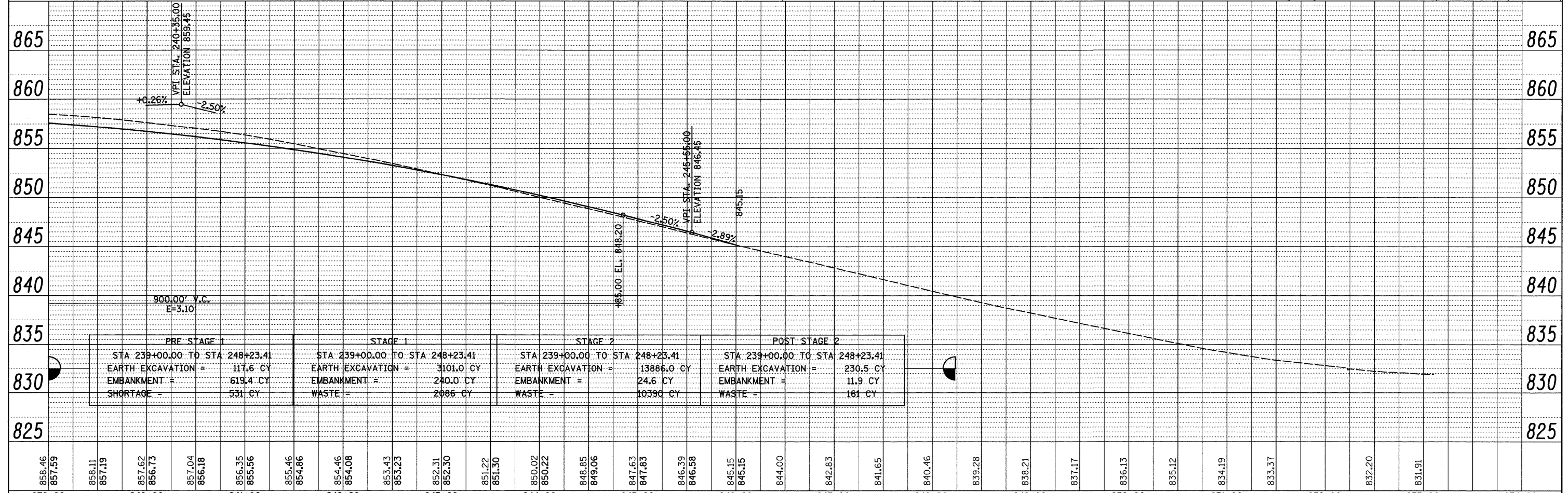
EXIST. CURVE 350  
 PI STA. = 238+19.18  
 $\Delta = 18^\circ 31' 03''$  (LT)  
 $D = 1^\circ 37' 14''$   
 $R = 3,535.54'$   
 $T = 576.36'$   
 $L = 1,142.66'$   
 $E = 46.67'$   
 $e = \text{---}$   
 $T.R. = \text{---}$   
 $S.E. RUN = \text{---}$   
 $P.C. STA. = 232+42.82$   
 $P.T. STA. = 243+85.48$



- = TREE REMOVAL (ACRE)
- = TREE REMOVAL (EACH)
- = PAVEMENT REMOVAL

BEL-AIR ESTATES LTD

THOMAS INV I & THOMAS INV II LLC & OLYMPUS INV II LLC



STAGE	STATION RANGE	EARTH EXCAVATION (CY)	EMBANKMENT (CY)	SHORTAGE (CY)	WASTE (CY)
PRE STAGE 1	STA 239+00.00 TO STA 248+23.41	117.6	619.4	531	-
STAGE 1	STA 239+00.00 TO STA 248+23.41	3101.0	240.0	-	2086
STAGE 2	STA 239+00.00 TO STA 248+23.41	13886.0	24.6	-	10390
POST STAGE 2	STA 239+00.00 TO STA 248+23.41	230.5	11.9	-	161