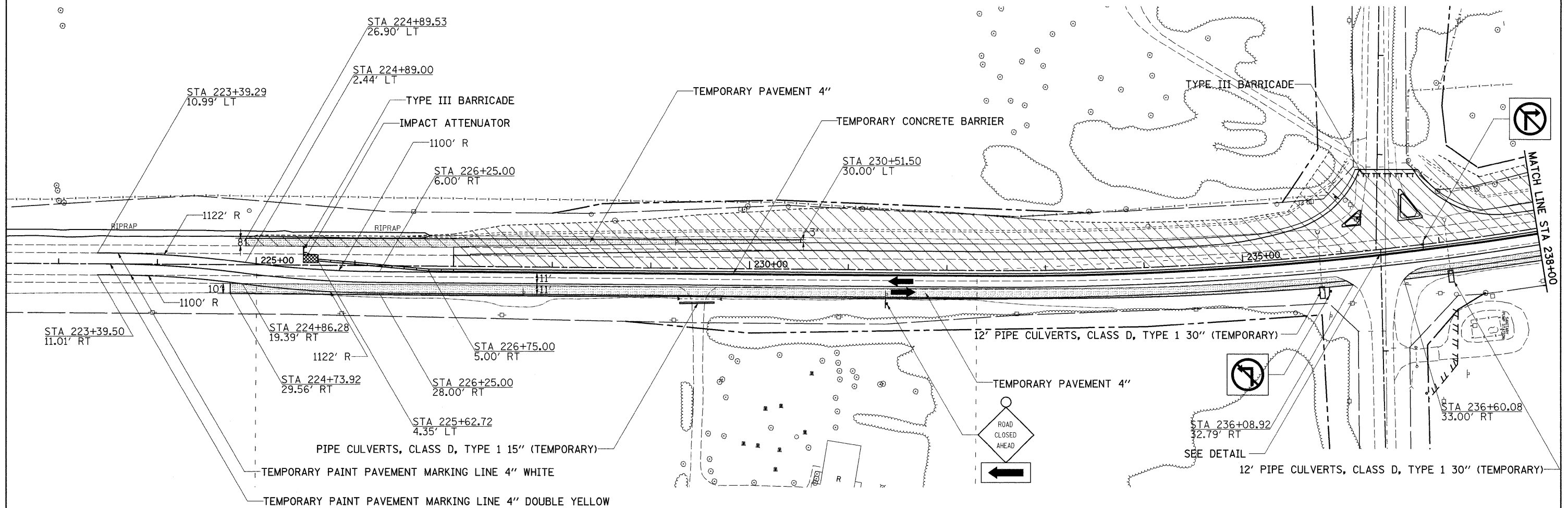
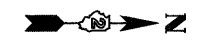


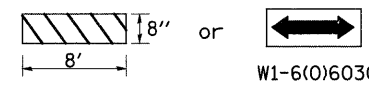
# STAGE 1

## SEQUENCE OF WORK

- 1) REMOVE END SECTIONS FROM CULVERTS AT STA.235+78 AND STA.237+10 AND PLACE TEMPORARY PIPE.
- 2) BUILD 10 FT WIDE TEMPORARY PAVEMENT RT. STA.224+73.92 - 248+23.41.
- 3) PLACE TEMPORARY PAINT PAVEMENT MARKINGS.
- 4) SWITCH TRAFFIC OVER FOR STAGE 1.
- 5) PLACE BARRIER WALL, SIGNING, AND TRAFFIC CONTROL DEVICES.
- 6) CONSTRUCT STAGE 1 AS SHOWN IN STAGING DETAILS AND STAGING TYPICALS AND REMOVE WEST HALF OF CULVERTS.
- 7) BUILD 8 FT WIDE TEMPORARY PAVEMENT LT. STA.224+89.53 - 230+51.50 & LT. STA.242+27.92 - 248+07.14.
- 8) PLACE TEMPORARY PAINT PRIOR TO SWITCHING TRAFFIC TO THE NEW PAVEMENT FOR STAGE 2.

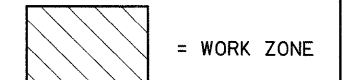


### DETAIL



STRIPED AS SHOWN FOR THE TYPE III BARRICADE ON STANDARD 701901

MOUNTED TO THE FACE OF THE TEMPORARY CONCRETE BARRIER WALL COST TO BE INCLUDED



SIGNING & DEVICES TO BE SET UP ACCORDING TO TRAFFIC CONTROL STANDARD 701331

FILE NAME =	USER NAME = goffjl	DESIGNED -	REVISED -
ct:\pw\work\PWIDOT\GOFFJL\dms85434\d0899\stg.dgn		DRAWN -	REVISED -
PLOT SCALE = 50,0000' / IN.		CHECKED -	REVISED -
PLOT DATE = Tue Mar 09 10:17:41 2010		DATE -	REVISED -

STATE OF ILLINOIS  
DEPARTMENT OF TRANSPORTATION

### STAGING DETAILS

SCALE: SHEET NO. OF SHEETS STA. TO STA.

F.A.P. RTE. 754	SECTION 101M-1	COUNTY BOONE	TOTAL SHEETS 74	SHEET NO. 24
CONTRACT NO. 64E34				
ILLINOIS FED. AID PROJECT				