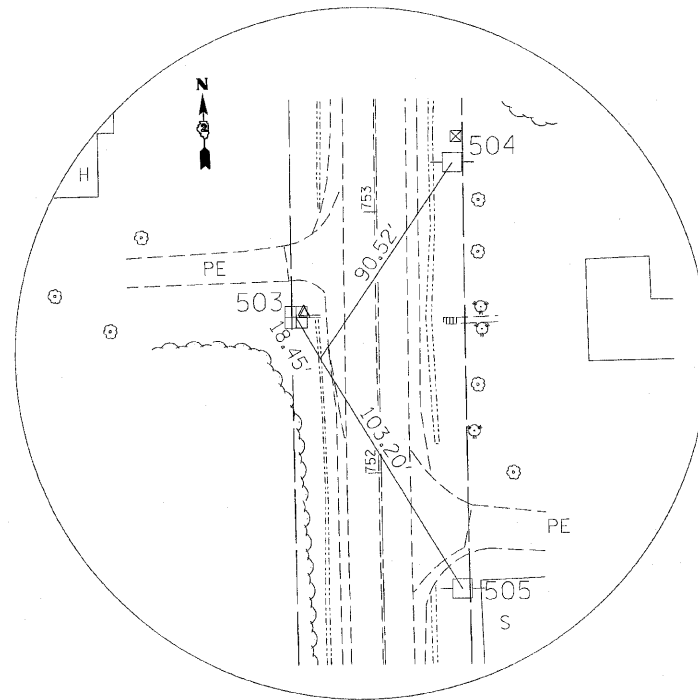
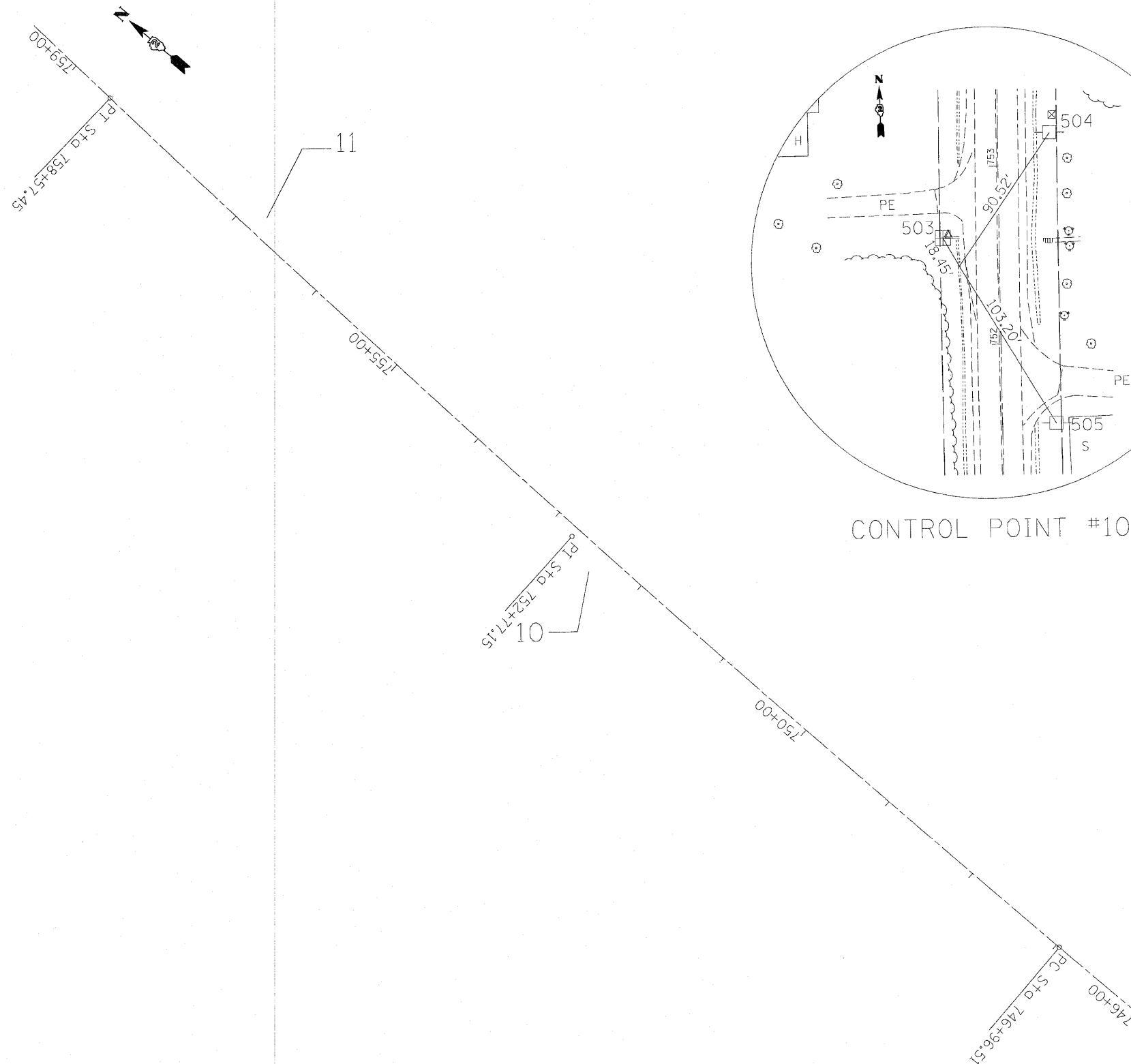
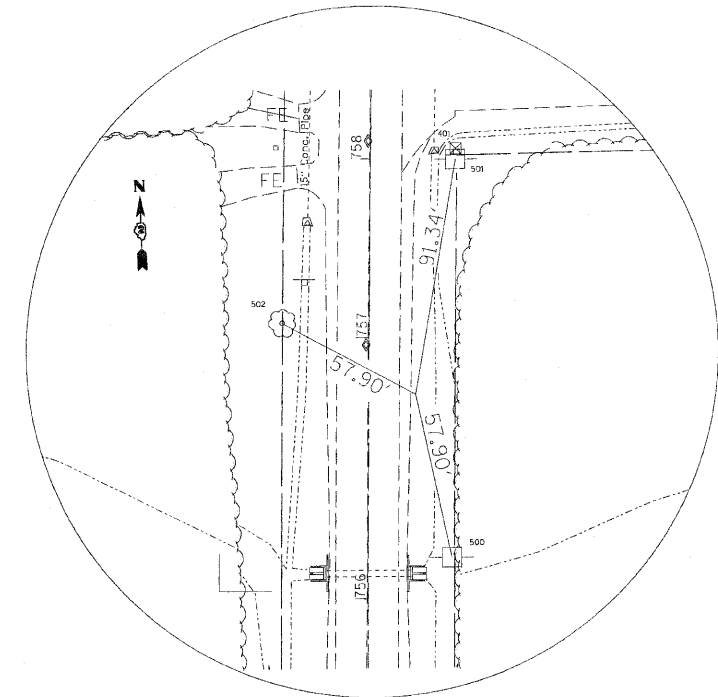


# HORIZONTAL & VERTICAL CONTROL



CONTROL POINT #10



CONTROL POINT #11

Curve Data

Curve 230  
 Feature: DEFAULT  
 P.I. Station 752+77.1510 N 1,853,692.9067 E 2,350,438.7756  
 Delta = 3° 25' 35.7896" (RT)  
 Degree = 0° 17' 42.5690"  
 Tangent = 580.6431'  
 Length = 1,160.9401'  
 Radius = 19,411.8973'  
 External = 8.6821'  
 Long Chord = 1,160.7671'  
 Mid. Ord. = 8.6782'  
 P.C. Station 746+96.5079 N 1,853,112.6078 E 2,350,458.7664  
 P.T. Station 758+57.4480 N 1,854,273.3630 E 2,350,453.5049  
 C.C. N 1,853,780.9359 E 2,369,859.1555

Course from PT 230 to PC 240 1° 27' 12.9393" Dis+ 1,075.4379'

FILE NAME = c:\p_w\work\pwidot\cushnerbw\0149475\029909-shr-ATB.dgn	USER NAME = cushnerbw	DESIGNED -	REVISED -	STATE OF ILLINOIS DEPARTMENT OF TRANSPORTATION	HORIZONTAL & VERTICAL CONTROL	F.A.P. RTE.	SECTION	COUNTY	TOTAL SHEETS	SHEET NO.
	PLOT SCALE = 50.0000' / IN.	CHECKED -	REVISED -			22	15T-1	WHITESIDE	17	7
PLOT DATE = Thu Jun 24 08:44:13 2010	DATE -	REVISED -	REVISED -	SCALE:	SHEET NO. OF SHEETS	STA. TO STA.	ILLINOIS FED. AID PROJECT CONTRACT NO. 64F35			