

INDEX OF SHEETS

1	COVER SHEET
2	GENERAL NOTES
3-9	SUMMARY OF QUANTITIES
10-17	TYPICAL SECTIONS
18-31	SCHEDULES OF QUANTITIES
32-36	ALIGNMENTS, TIES AND BENCHMARKS
37-61	PLAN AND PROFILE SHEETS
62-109	STAGING PLANS
110-123	PAVEMENT MARKING, EROSION AND SEDIMENT CONTROL PLANS AND DETAILS
124-126	DRAINAGE AND UTILITY PLANS
127-129	RIGHT OF WAY
130-132	INTERSECTION DETAILS
133-134	TRANSITION APPROACH CHANNELIZED DETAIL
135-137	SUPERELEVATION DETAILS
138-141	GRADING PLAN
142-146	TRAFFIC SIGNAL PLANS
147-148	SIGNAL FOUNDATION SOIL BORINGS
149-154	SIGNING PLANS
155-164	DISTRICT CADD DETAILS
165-166	SPECIAL DETAILS
167	LIGHTING GENERAL NOTES AND LEGEND
168-172	ROADWAY LIGHTING PLAN
173	ROADWAY TEMPORARY LIGHTING PLAN
174	UNDERPASS LIGHTING PLAN
175	WIRING DIAGRAM
176	HIGHMAST AIMING DIAGRAM
177-181	ROADWAY LIGHTING DETAIL
182	CONCRETE FOUNDATION DETAIL
183-189	ROADWAY LIGHTING SOIL BORINGS
190-282	CROSS SECTIONS
283-313	STRUCTURE PLANS - BRISBIN RD
314-332	STRUCTURE PLANS - RAMP B
333-351	STRUCTURE PLANS - RAMP C
351A-351K	EXISTING BRISBIN ROAD BRIDGE PLANS

FOR LIST OF HIGHWAY STANDARDS, SEE SHEET NO. 2

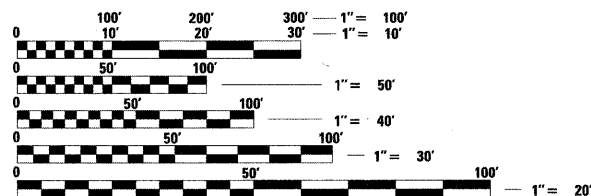
FUNCTIONAL CLASSIFICATION

BRISBIN RD: URBAN MAJOR COLLECTOR
 2010 ADT=2,200
 2020 ADT=13,200
 2030 ADT=16,500

I-80: RURAL INTERSTATE
 2010 ADT=34,100
 2020 ADT=47,960
 2030 ADT=60,560

NORTH RD: LOCAL RD
 2010 ADT=400
 2020 ADT=400
 2030 ADT=500

US 6: URBAN MAJOR COLLECTOR
 2010 ADT=7,900
 2020 ADT=15,600



FULL SIZE PLANS HAVE BEEN PREPARED USING STANDARD ENGINEERING SCALES. REDUCED SIZED PLANS WILL NOT CONFORM TO STANDARD SCALES. IN MAKING MEASUREMENTS ON REDUCED PLANS, THE ABOVE SCALES MAY BE USED.

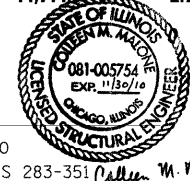
J.U.L.I.E.
 JOINT UTILITY LOCATION INFORMATION FOR EXCAVATION
 1-800-892-0123
 OR 811

PROJECT ENGINEER: CRAIG REED, P.E.
 SQUAD LEADER: MARK JONES, P.E.

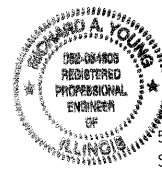
CONTRACT NO. 66408



Andrew K. Kassey
 5/19/10
 SHEETS 1-166, 183-282
 EXP. 11/30/11



5/3/10
 SHEETS 283-351
 EXP. 11/30/10

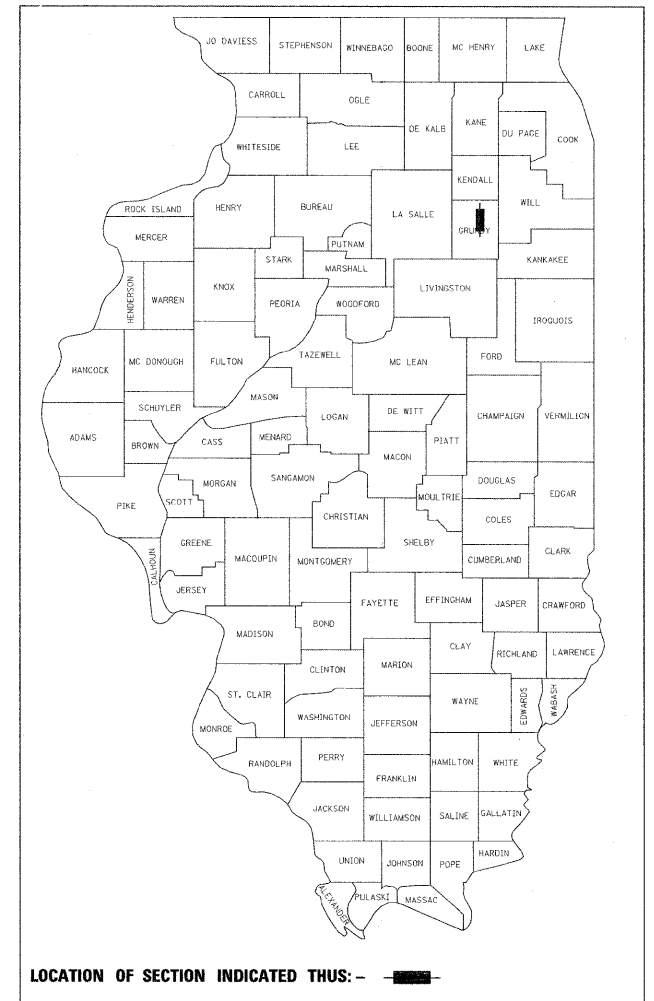
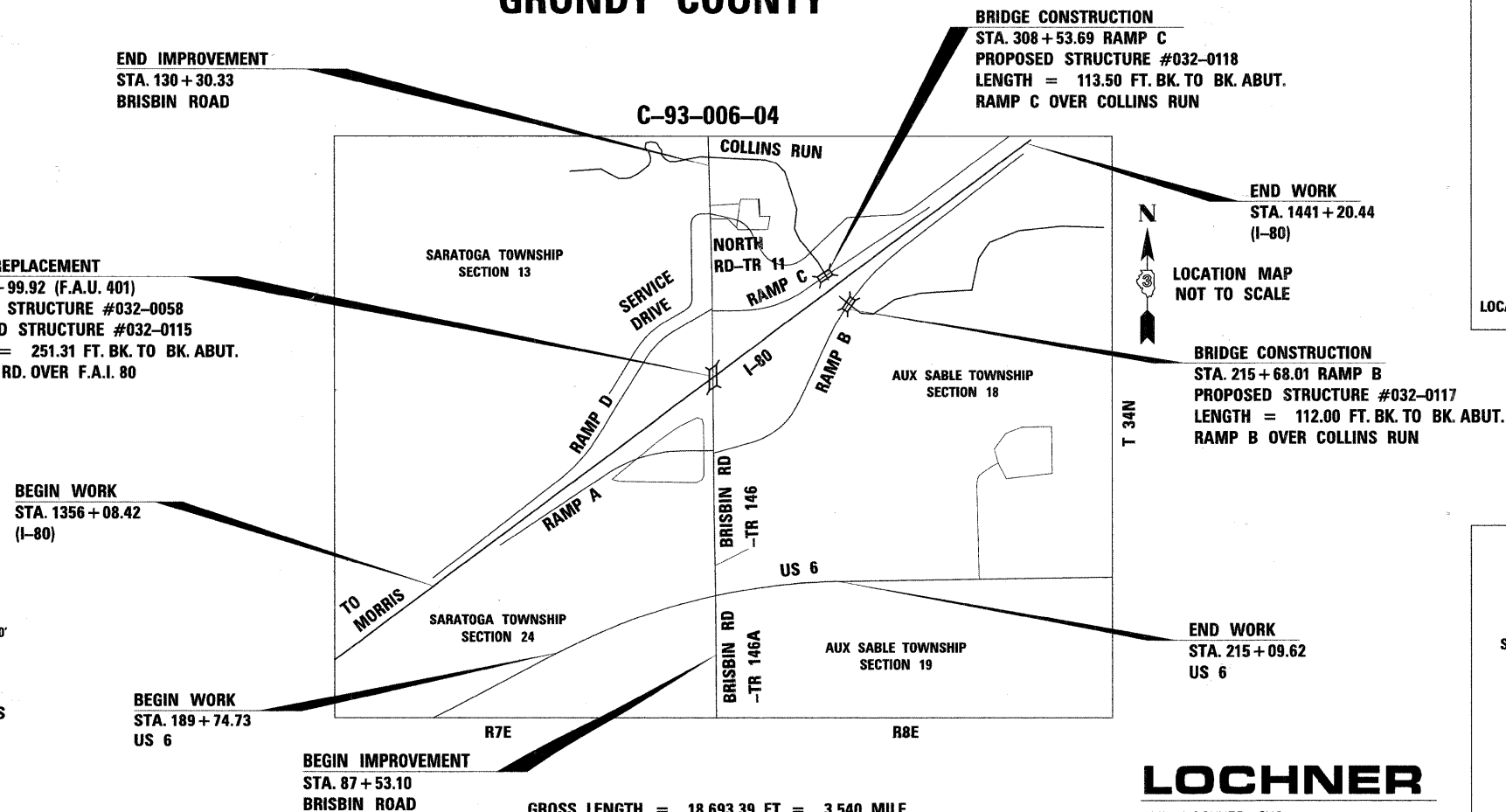


5/3/10
 SHEETS 167-182
 EXP. 11/30/11

STATE OF ILLINOIS
 DEPARTMENT OF TRANSPORTATION
 DIVISION OF HIGHWAYS

PROPOSED
 HIGHWAY PLANS

FAI 80 (I-80)
 FAS 297 / FAU 392 (US 6)
 SECTION (32,47-4)HBK-4 & (G)N
 PROJECT ACIM-HPP-080-4(189)115
 BRISBIN RD. INTERCHANGE CONSTRUCTION
 US 6 INTERSECTION RECONSTRUCTION
 GRUNDY COUNTY



LOCATION OF SECTION INDICATED THIS: -

BRIDGE CONSTRUCTION
 STA. 308 + 53.69 RAMP C
 PROPOSED STRUCTURE #032-0118
 LENGTH = 113.50 FT. BK. TO BK. ABUT.
 RAMP C OVER COLLINS RUN

END WORK
 STA. 1441 + 20.44
 (I-80)

LOCATION MAP
 NOT TO SCALE

BRIDGE CONSTRUCTION
 STA. 215 + 68.01 RAMP B
 PROPOSED STRUCTURE #032-0117
 LENGTH = 112.00 FT. BK. TO BK. ABUT.
 RAMP B OVER COLLINS RUN

END WORK
 STA. 215 + 09.62
 US 6

BEGIN IMPROVEMENT
 STA. 87 + 53.10
 BRISBIN ROAD

BEGIN WORK
 STA. 1356 + 08.42
 (I-80)

BEGIN WORK
 STA. 189 + 74.73
 US 6

GROSS LENGTH = 18,693.39 FT. = 3.540 MILE
 NET LENGTH = 14,714.67 FT. = 2.787 MILE

LOCHNER

H.W. LOCHNER, INC.
 CONSULTING ENGINEERS & PLANNERS
 20 NORTH WACKER DRIVE SUITE 1200
 CHICAGO, IL 60606

STATE OF ILLINOIS
 DEPARTMENT OF TRANSPORTATION
 DIVISION OF HIGHWAYS

SUBMITTED July 9 20 10
 Deputy Director of Highways, Region Engineer
 August 13 20 10
 Acting Engineer of Design and Environment
 August 13 20 10
 Director of Highways, Chief Engineer

PRINTED BY THE AUTHORITY
 OF THE STATE OF ILLINOIS