

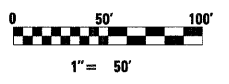
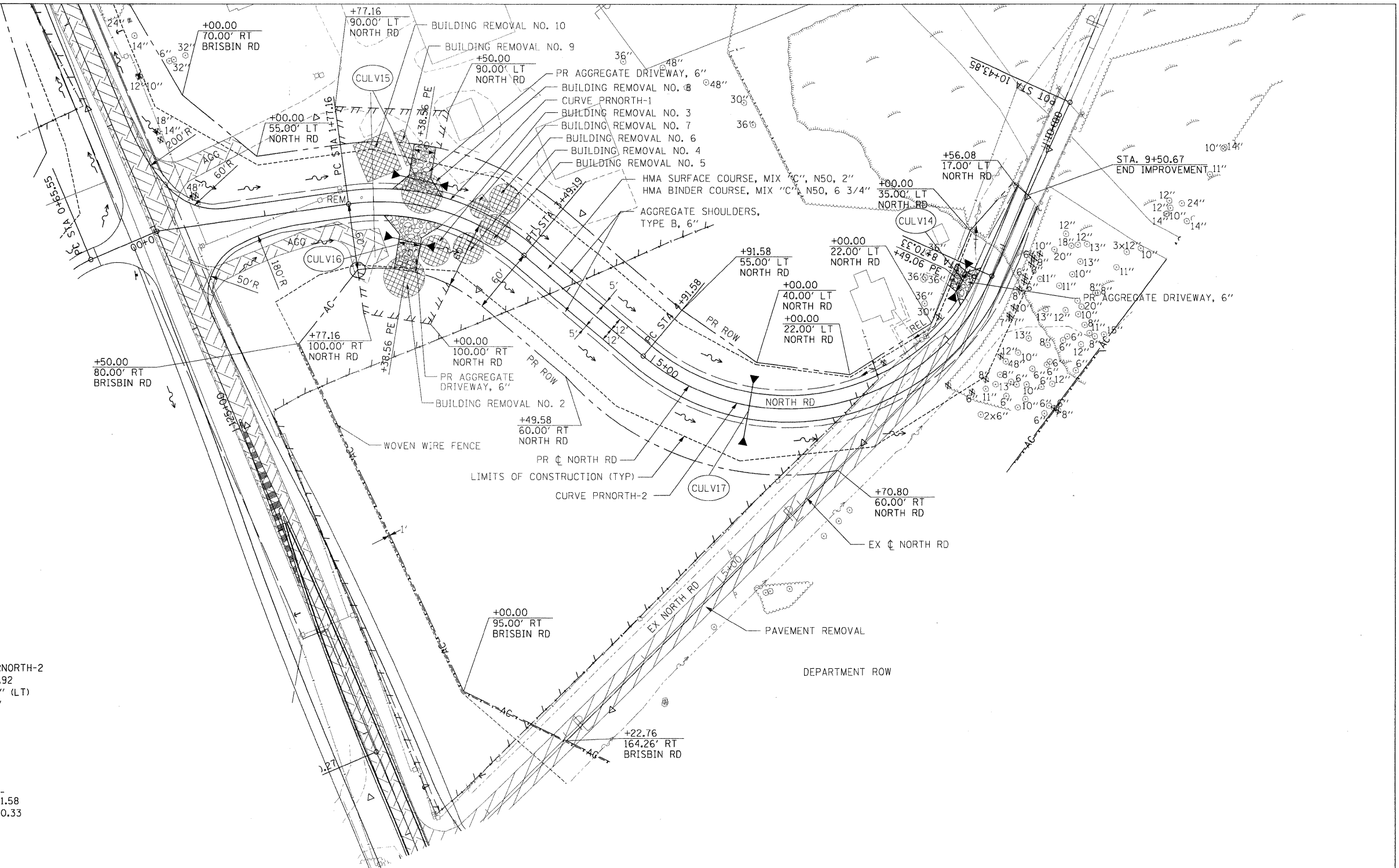


- CULV14** STA. 8+52
36.0' P CUL A 1 15
SLOPE = 0.32%
2-PRC FL END SEC 15
US INV = 537.69
DS INV = 537.57
FES STA 8+22, 27' LT
FES STA 8+79, 25' LT
- CULV15** STA. 2+36.90
47.5' P CUL CL D 1 15
SLOPE = 1.20%
2-END SEC 15
US INV = 542.58
DS INV = 542.03
FES STA 2+16, 28' LT
FES STA 2+61, 25' LT
- CULV16** STA. 2+38.01
42.0' P CUL CL D 1 15
SLOPE = 1.60%
2-END SEC 15
US INV = 542.39
DS INV = 541.70
FES STA 2+08, 30' RT
FES STA 2+68, 33' RT
- CULV17** STA. 6+00.00
54.0' P CUL A 1 18
SLOPE = 0.84%
2-PRC FL END SEC 18
US INV = 537.17
DS INV = 536.66
FES STA 6+00, 27' LT
FES STA 6+00, 33' RT

- PROP. CURVE PRNORTH-1
PI STA. = 2+68.60
 $\Delta = 48^\circ 04' 53''$ (RT)
D = 27° 56' 57"
R = 205.00'
T = 91.45'
L = 172.03'
E = 19.47'
e = 4.0%
T.R. = -----
S.E. RUN = -----
P.C. STA. = 1+77.16
P.T. STA. = 3+49.19
- PROP. CURVE PRNORTH-2
PI STA. = 7+62.92
 $\Delta = 105^\circ 51' 28''$ (LT)
D = 27° 56' 57"
R = 205.00'
T = 271.34'
L = 378.75'
E = 135.08'
e = 4.0%
T.R. = -----
S.E. RUN = -----
P.C. STA. = 4+91.58
P.T. STA. = 8+70.33

LEGEND

- PAVEMENT REMOVAL
- EARTH EXCAVATION
- STABILIZED SHOULDER REMOVAL
- DRIVEWAY PAVEMENT REMOVAL
- REMOVAL ITEM
- SIGN REMOVAL
- TREE REMOVAL
- STORM SEWER REMOVAL
- INLET REMOVAL
- MANHOLE REMOVAL
- EXISTING CONTROL POINT



FILE NAME =	USER NAME = .USER.	DESIGNED - CGC	REVISED -	STATE OF ILLINOIS DEPARTMENT OF TRANSPORTATION	NORTH FRONTAGE ROAD PLAN	F.A.U. RTE.	SECTION	COUNTY	TOTAL SHEETS	SHEET NO.	
tt1812\CADD Sheets\CD366408-sht-plnpr	North.dgn	DRAWN - CGC	REVISED -			•	(32,47-4) HBK-4 & GIN	GRUNDY	351	58	
PLDT SCALE = #SCALE#	CHECKED - JPW	REVISIED -	REVISIED -			CONTRACT NO. 66408					
PLDT DATE = 6/23/2010	DATE - 6/23/2010	REVISIED -	REVISIED -			ILLINOIS FED. AID PROJECT					
				SCALE: 1"=50'		SHEET NO. 58 OF 351 SHEETS		STA. 0+00.00 TO STA. 10+43.85			
• FAI 80 & FAS 297 / FAU 392											