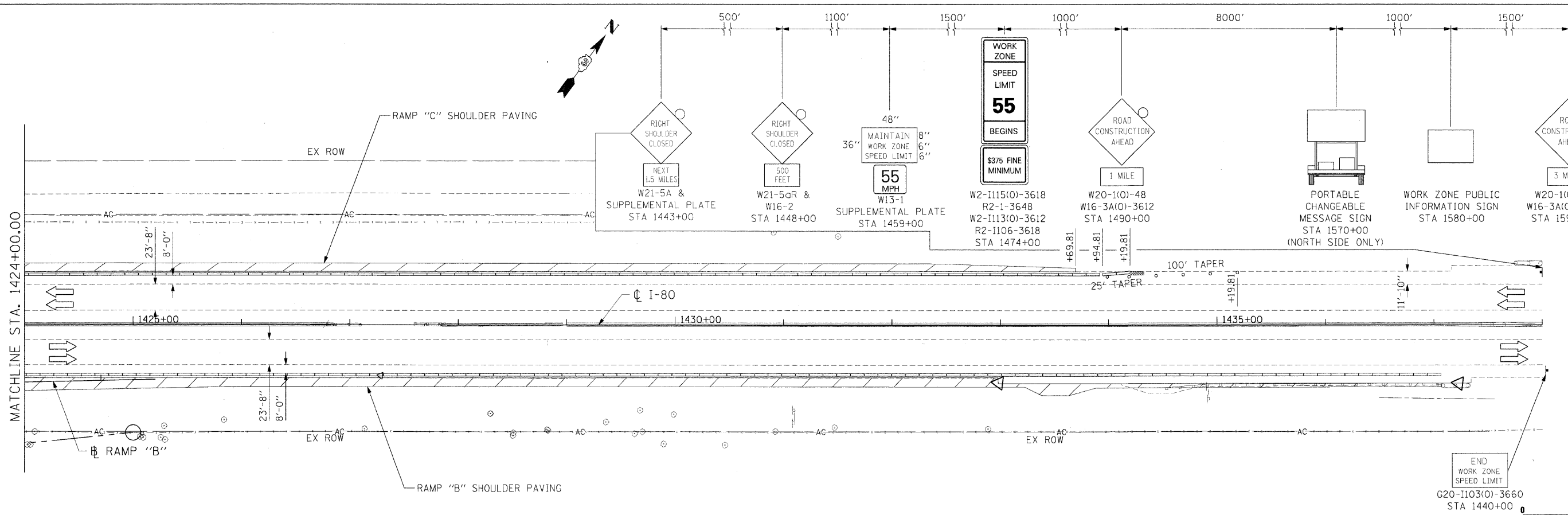
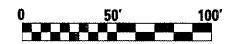
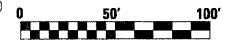


- LEGEND**
- WORK ZONE
  - DIRECTION OF TRAFFIC
  - DRUMS WITH MONO-DIRECTIONAL STEADY BURNING LIGHTS @ 50' CENTERS, 25' CENTERS ALONG TAPERS
  - IMPACT ATTENUATOR, TEMPORARY (NON-REDIRECTIVE)
  - TEMPORARY CONCRETE BARRIER

TEMPORARY CONCRETE BARRIER	
NORMAL POSTED SPEED	TAPER RATIO
40 MPH & ABOVE	12:1
BELOW & 40 MPH	8:1



END WORK ZONE SPEED LIMIT  
G20-1103(0)-3660  
STA 1440+00



FILE NAME = t:\18124CADD Sheets\0366408-sh1-staging.dgn	USER NAME = .USER.	DESIGNED - JPW	REVISED -	<b>STATE OF ILLINOIS DEPARTMENT OF TRANSPORTATION</b>	<b>MAINTENANCE OF TRAFFIC I-80 STAGE 2</b>		F.A.U. RTE.	SECTION	COUNTY	TOTAL SHEETS	SHEET NO.
PLOT SCALE = *SCALE*	DRAWN - ECS	CHECKED - AKK	REVISED -		SCALE: 1"=50'	SHEET NO. 82 OF 351 SHEETS	STA. 1410+00.00 TO STA. 1437+00.00	(32,47-4) HBK-4 & G(N)	GRUNDY	351	82
PLOT DATE = 5/20/2010	DATE - 5/20/2010	REVISOR -	REVISED -		CONTRACT NO. 66408		ILLINOIS FED. AID PROJECT				
							* FAI 80 & FAS 297 / FAU 392				