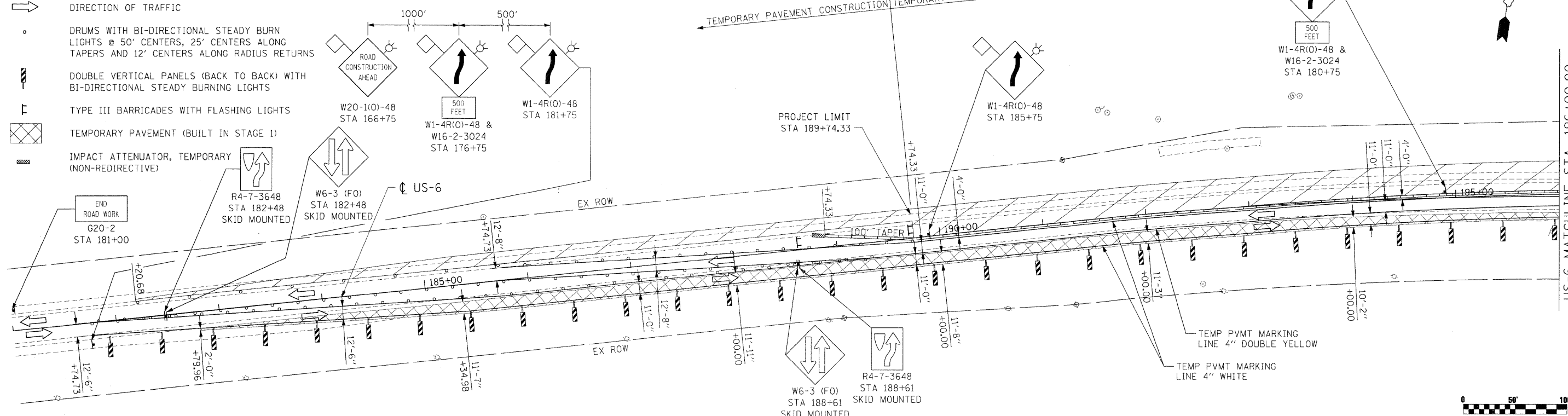


LEGEND

- WORK ZONE
- TEMPORARY CONCRETE BARRIER
- DIRECTION OF TRAFFIC
- DRUMS WITH BI-DIRECTIONAL STEADY BURN LIGHTS @ 50' CENTERS, 25' CENTERS ALONG TAPERS AND 12' CENTERS ALONG RADIUS RETURNS
- DOUBLE VERTICAL PANELS (BACK TO BACK) WITH BI-DIRECTIONAL STEADY BURNING LIGHTS
- TYPE III BARRICADES WITH FLASHING LIGHTS
- TEMPORARY PAVEMENT (BUILT IN STAGE 1)
- IMPACT ATTENUATOR, TEMPORARY (NON-REDIRECTIVE)

TEMPORARY CONCRETE BARRIER	
NORMAL POSTED SPEED	TAPER RATIO
40 MPH & ABOVE	12:1
BELOW & 40 MPH	8:1



NOTES:

1. SEE IDOT STANDARD 701331-03 DURING STAGE 2 CONSTRUCTION.
2. ALL SIGNS SHALL BE POST MOUNTED, UNLESS OTHERWISE NOTED.
3. REMOVE ALL CONFLICTING PAVEMENT MARKINGS.
4. BRISBIN RD NORTH OF US-6 IS CLOSED TO TRAFFIC DURING STAGE 2 CONSTRUCTION.

