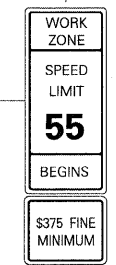
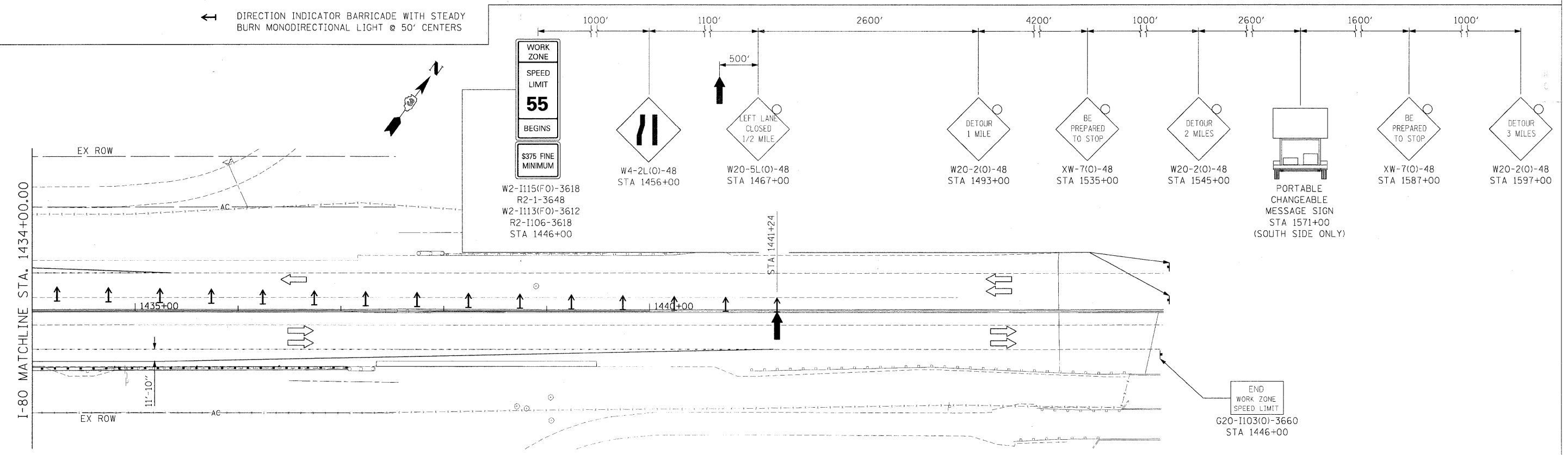
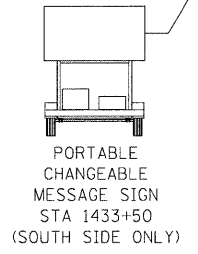
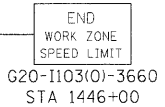
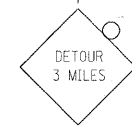
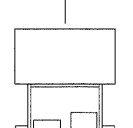
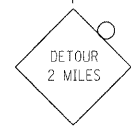
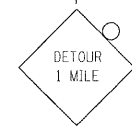
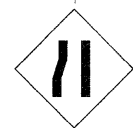


- LEGEND**
- WORK ZONE
 - DIRECTION OF TRAFFIC
 - DRUMS WITH MONO-DIRECTIONAL STEADY BURN LIGHTS @ 100' CENTERS
 - ARROWBOARD
 - DIRECTION INDICATOR BARRICADE WITH STEADY BURN MONODIRECTIONAL LIGHT @ 50' CENTERS



W2-I115(F)-3618
R2-1-3648
W2-I113(F)-3612
R2-I106-3618
STA 1446+00



NOTES:

1. I-80 DETOUR VIA RAMP A, B, C, AND D DURING NIGHT-TIME HOURS ONLY (8 PM TO 5 AM).
2. USE STAGE 4 RAMP CLOSURES FOR DAYTIME OPERATIONS.
3. SEE SHEET 62 AND 63 FOR STAGING AND CONSTRUCTION ACTIVITIES NOTES.

FILE NAME =	USER NAME = .USER.	DESIGNED - JPW	REVISED -	STATE OF ILLINOIS DEPARTMENT OF TRANSPORTATION	MAINTENANCE OF TRAFFIC I-80 STAGE 3			FAI 80 & FAS 297 / FAU 392				
ts\1812\CADD Sheets\0366408-shr-staging.dgn		DRAWN - ECS	REVISED -		F.A.U. RTE.	SECTION	COUNTY	TOTAL SHEETS	SHEET NO.			
PLOT SCALE = #SCALE#		CHECKED - AKK	REVISED -		(32,47-4) HBK-4 & G(N)	GRUNDY	351	88				
PLOT DATE = 5/20/2010		DATE - 5/20/2010	REVISED -		CONTRACT NO. 66408		ILLINOIS FED. AID PROJECT					
				SCALE: 1"=50'	SHEET NO. 88 OF 351 SHEETS	STA. 1420+00.00 TO STA. 1445+00.00						