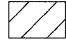
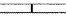
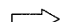


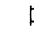

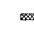
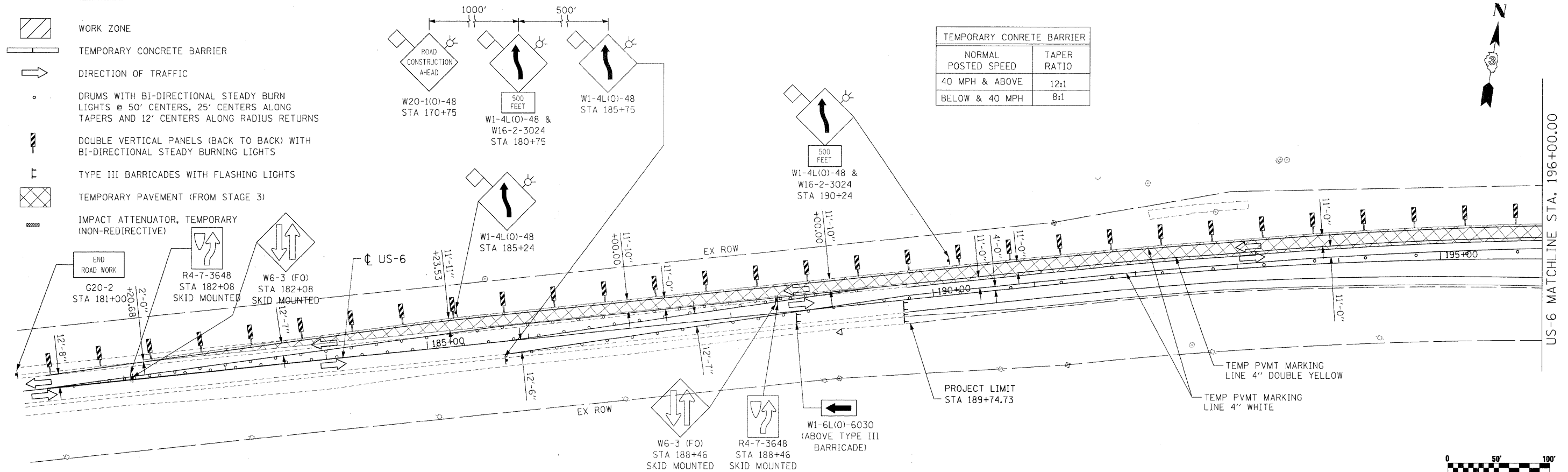


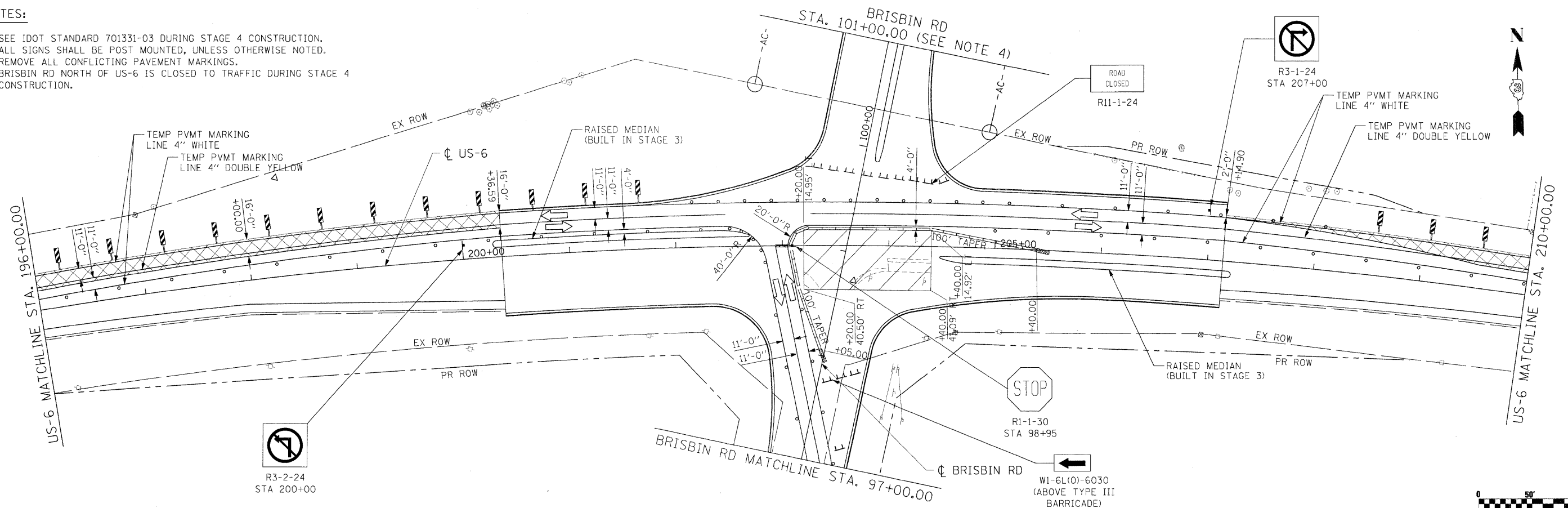
**LEGEND**

-  WORK ZONE
-  TEMPORARY CONCRETE BARRIER
-  DIRECTION OF TRAFFIC
-  DRUMS WITH BI-DIRECTIONAL STEADY BURN LIGHTS @ 50' CENTERS, 25' CENTERS ALONG TAPERS AND 12' CENTERS ALONG RADIUS RETURNS
-  DOUBLE VERTICAL PANELS (BACK TO BACK) WITH BI-DIRECTIONAL STEADY BURNING LIGHTS
-  TYPE III BARRICADES WITH FLASHING LIGHTS
-  TEMPORARY PAVEMENT (FROM STAGE 3)
-  IMPACT ATTENUATOR, TEMPORARY (NON-REDIRECTIVE)



**NOTES:**

1. SEE IDOT STANDARD 701331-03 DURING STAGE 4 CONSTRUCTION.
2. ALL SIGNS SHALL BE POST MOUNTED, UNLESS OTHERWISE NOTED.
3. REMOVE ALL CONFLICTING PAVEMENT MARKINGS.
4. BRISBIN RD NORTH OF US-6 IS CLOSED TO TRAFFIC DURING STAGE 4 CONSTRUCTION.



FILE NAME =	USER NAME = .USER.	DESIGNED - JPW	REVISED -
t:\1812\CADD Sheets\0366408-ah1-staging.dgn		DRAWN - ECS	REVISED -
PLOT SCALE = #SCALE#		CHECKED - AKK	REVISED -
PLOT DATE = 5/20/2010		DATE - 5/20/2010	REVISED -

**STATE OF ILLINOIS  
DEPARTMENT OF TRANSPORTATION**

**MAINTENANCE OF TRAFFIC  
US-6 STAGE 4**

SCALE: 1"=50' SHEET NO. 95 OF 351 SHEETS STA. 185+00.00 TO STA. 210+00.00

• FAI 80 & FAS 297 / FAU 392				
F.A.U. RTE.	SECTION	COUNTY	TOTAL SHEETS	SHEET NO.
	(32,47-4) HBK-4 & C/N	GRUNDY	351	95
			CONTRACT NO. 66408	
ILLINOIS FED. AID PROJECT				