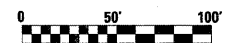
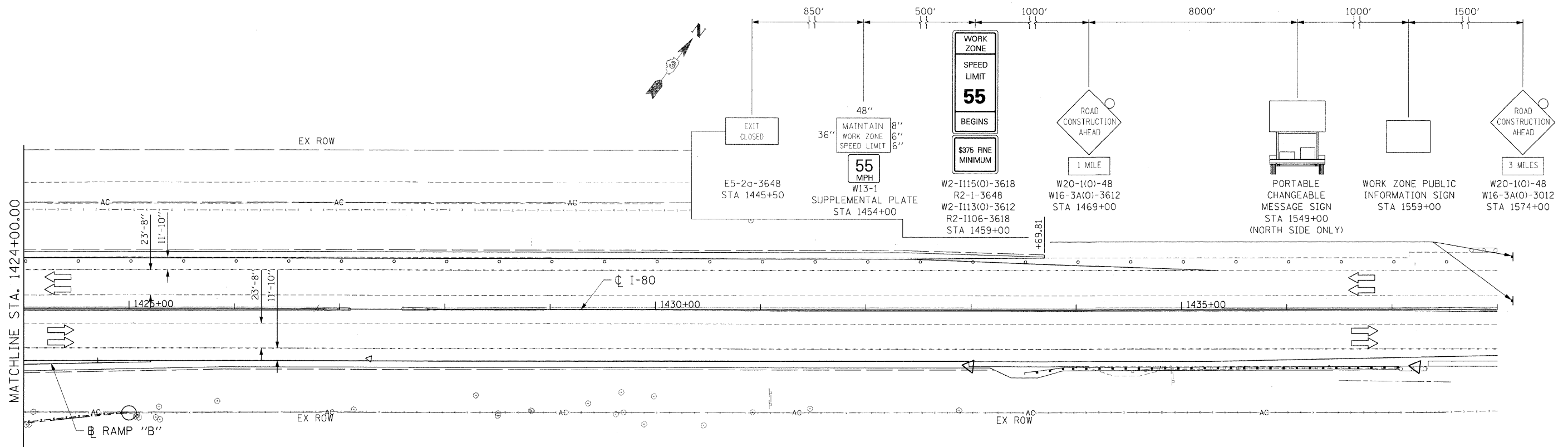


- LEGEND**
- WORK ZONE
  - DIRECTION OF TRAFFIC
  - DRUMS WITH MONO-DIRECTIONAL STEADY BURNING LIGHTS @ 50' CENTERS, 25' CENTERS ALONG TAPERS
  - TYPE III BARRICADE WITH FLASHING LIGHTS



FILE NAME = t:\1812\CA00 Sheets\0366408-shr-staging.dgn	USER NAME = .USER.	DESIGNED - JPW	REVISED -	<b>STATE OF ILLINOIS DEPARTMENT OF TRANSPORTATION</b>	<b>MAINTENANCE OF TRAFFIC I-80 STAGE 5</b>			F.A.U. RTE.	SECTION	COUNTY	TOTAL SHEETS	SHEET NO.
	PLOT SCALE = #SCALE#	DRAWN - ECS	REVISED -		SCALE: 1"=50'	SHEET NO. 99 OF 351 SHEETS	STA. 1410+00.00 TO STA. 1437+00.00	(32,47-4) HBK-4 & G(N)	GRUNDY	351	99	
	PLOT DATE = 5/20/2010	CHECKED - AKK	REVISED -		CONTRACT NO. 66408							
		DATE - 5/20/2010	REVISED -		ILLINOIS FED. AID PROJECT							
					FAI 80 & FAS 297 / FAU 392							