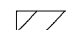
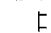
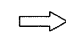

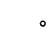
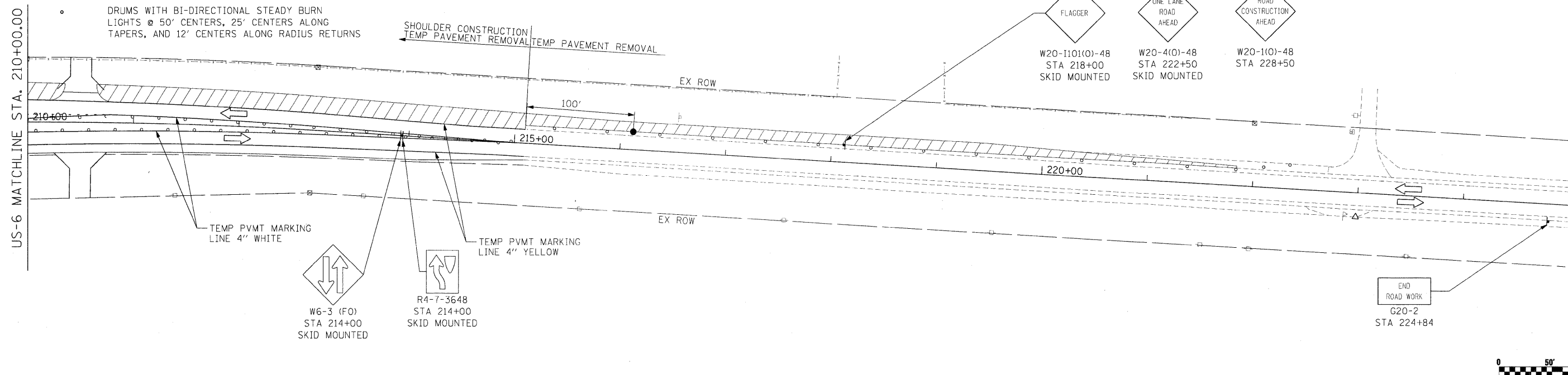


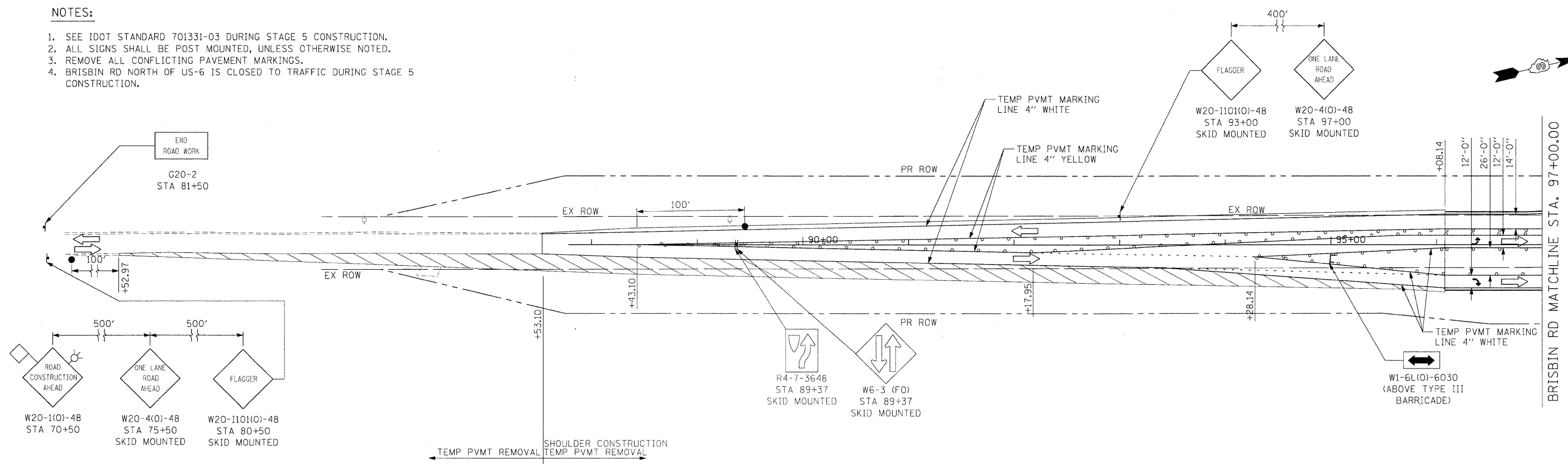
LEGEND

-  WORK ZONE
-  TYPE III BARRICADE WITH FLASHING LIGHTS
-  DIRECTION OF TRAFFIC
-  FLAGGER
-  DRUMS WITH BI-DIRECTIONAL STEADY BURN LIGHTS @ 50' CENTERS, 25' CENTERS ALONG TAPERS, AND 12' CENTERS ALONG RADIUS RETURNS



NOTES:

1. SEE IDOT STANDARD 701331-03 DURING STAGE 5 CONSTRUCTION.
2. ALL SIGNS SHALL BE POST MOUNTED, UNLESS OTHERWISE NOTED.
3. REMOVE ALL CONFLICTING PAVEMENT MARKINGS.
4. BRISBIN RD NORTH OF US-6 IS CLOSED TO TRAFFIC DURING STAGE 5 CONSTRUCTION.



FILE NAME =	USER NAME = .USER.	DESIGNED - JPW	REVISED -
t:\1812\CA00 Sheets\0366408-shr-staging.dgn		DRAWN - ECS	REVISED -
	PLOT SCALE = #SCALE#	CHECKED - AKK	REVISED -
	PLOT DATE = 5/20/2010	DATE - 5/20/2010	REVISED -

**STATE OF ILLINOIS
DEPARTMENT OF TRANSPORTATION**

**MAINTENANCE OF TRAFFIC
US-6, BRISBIN RD (SOUTH OF US6) STAGE 5**

SCALE: 1"=50' SHEET NO. 101 OF 351 SHEETS STA. 210+00.00 TO STA. 221+00.00

FAI 80 & FAS 297 / FAU 392		F.A.U. RTE.	SECTION	COUNTY	TOTAL SHEETS	SHEET NO.
			(32,47-4) HBK-4 & (N)	GRUNDY	351	101
					CONTRACT NO. 66408	
ILLINOIS FED. AID PROJECT						