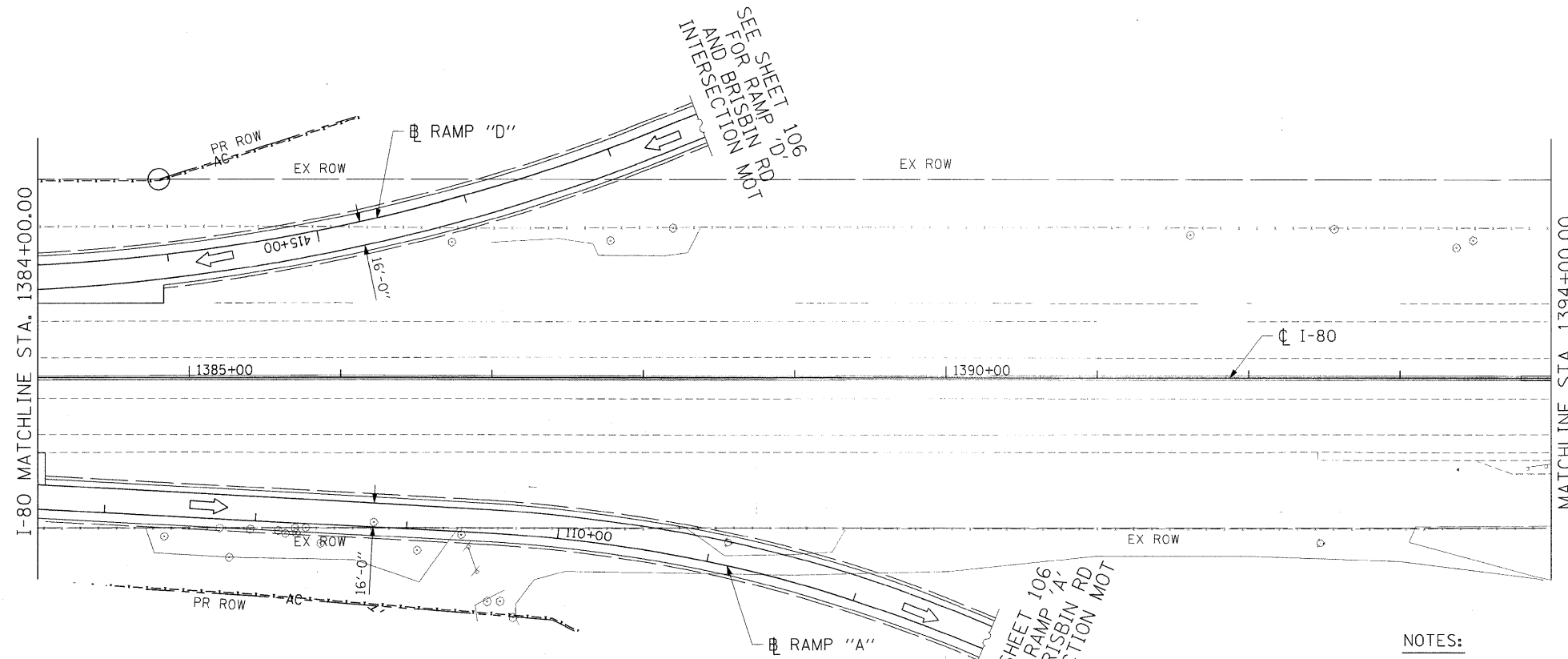
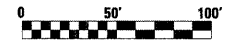


- LEGEND**
- WORK ZONE
 - DIRECTION OF TRAFFIC
 - DRUMS WITH MONO-DIRECTIONAL STEADY BURN LIGHTS @ 100' CENTERS
 - ARROWBOARD
 - DIRECTION INDICATOR BARRICADE WITH STEADY BURN MONO-DIRECTIONAL LIGHT @ 50' CENTERS

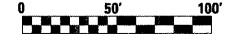


SEE SHEET 106 FOR RAMP 'D' AND BRISBIN RD INTERSECTION MOT

SEE SHEET 106 FOR RAMP 'A' AND BRISBIN RD INTERSECTION MOT

NOTES:

1. I-80 DETOUR VIA RAMPS A, B, C, AND D DURING NIGHT-TIME HOURS ONLY (8 PM TO 5 AM).
2. USE STAGE 4 RAMP CLOSURES FOR DAYTIME OPERATIONS.
3. SEE SHEET 62 AND 63 FOR STAGING AND CONSTRUCTION ACTIVITIES NOTES.



FILE NAME =	USER NAME = .USER_	DESIGNED - JPW	REVISED -	STATE OF ILLINOIS DEPARTMENT OF TRANSPORTATION	MAINTENANCE OF TRAFFIC I-80 STAGE 6		F.A.U. RTE.	SECTION	COUNTY	TOTAL SHEETS	SHEET NO.
tt:\1812\CADD\Sheets\0366408-shit-staging.dgn		DRAWN - ECS	REVISED -		SCALE: 1"=50'	SHEET NO. 103 OF 351 SHEETS	STA. 1374+00.00 TO STA. 1394+00.00	(32,47-4) HBK-4 & G(N)	GRUNDY	351	103
PLT SCALE = #SCALE#		CHECKED - AKK	REVISED -		CONTRACT NO. 66408						
PLT DATE = 5/20/2010		DATE - 5/20/2010	REVISED -		ILLINOIS FED. AID PROJECT						