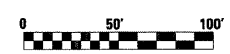
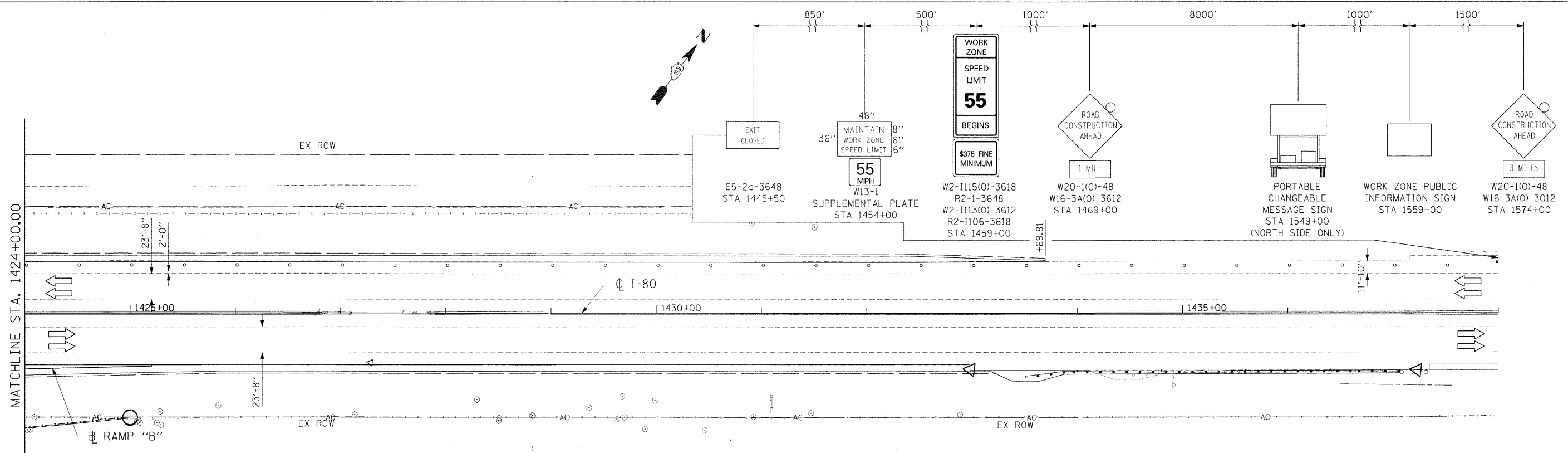


- LEGEND**
- WORK ZONE
 - DIRECTION OF TRAFFIC
 - DRUMS WITH MONO-DIRECTIONAL STEADY BURNING LIGHTS @ 50' CENTERS, 25' CENTERS ALONG TAPERS
 - TYPE III BARRICADE WITH FLASHING LIGHTS



FILE NAME = t:\1812\CADD Sheets\0366408-sht-staging.dgn	USER NAME = .USER.	DESIGNED - JPW	REVISED -	STATE OF ILLINOIS DEPARTMENT OF TRANSPORTATION	MAINTENANCE OF TRAFFIC I-80 STAGE 7		F.A.U. RTE. (32,47-4) HBK-4 & G(N)	COUNTY GRUNDY	TOTAL SHEETS 351	SHEET NO. 109	
PLOT SCALE = #SCALE#	CHECKED - AKK	DATE - 5/20/2010	REVISED -		SCALE: 1"=50'	SHEET NO. 109 OF 351 SHEETS	STA. 1410+00.00 TO STA. 1437+00.00	CONTRACT NO. 66408		ILLINOIS FED. AID PROJECT	
PLOT DATE = 5/20/2010	DATE - 5/20/2010	REVISED -	REVISED -		* FAI 80 & FAS 297 / FAU 392						