

DATE
BY
SURVEYED
PLOTTED
NOTE BOOK
NO.

DATE
BY
SURVEYED
PLOTTED
NOTE BOOK
NO.

DRAINAGE SEWER SCHEDULE

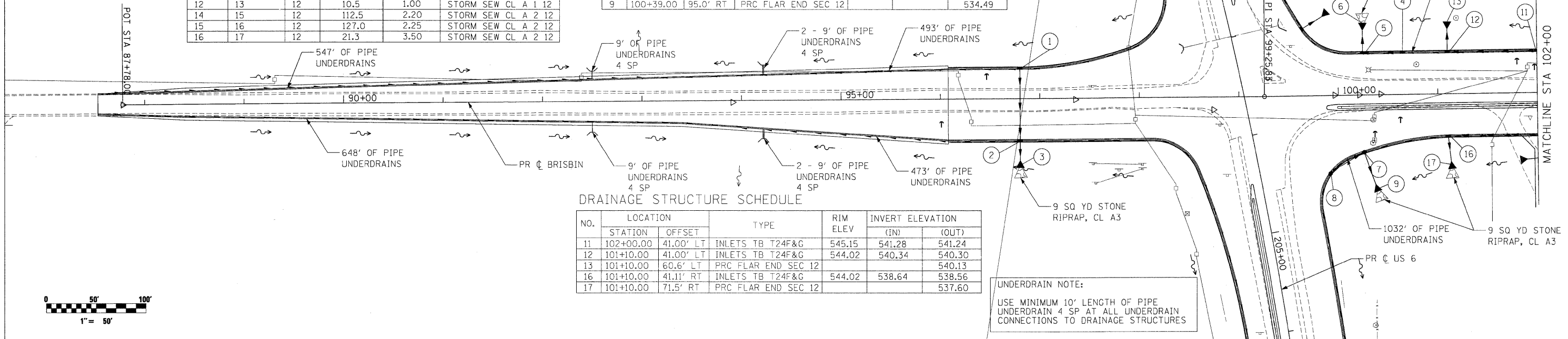
FROM	TO	SIZE (INCH)	LENGTH (FEET)	SLOPE (%)	TYPE
1	2	12	70.0	0.50	STORM SEW CL A 2 12
2	3	12	15.0	2.57	STORM SEW CL A 2 12
4	5	12	37.5	1.92	STORM SEW CL A 2 12
5	6	12	29.0	3.00	STORM SEW CL A 2 12
7	9	12	36.0	3.00	STORM SEW CL A 2 12
8	7	12	35.0	2.50	STORM SEW CL A 2 12
10	11	12	137.5	1.76	STORM SEW CL A 1 12
11	12	12	87.0	1.00	STORM SEW CL A 1 12
12	13	12	10.5	1.00	STORM SEW CL A 1 12
14	15	12	112.5	2.20	STORM SEW CL A 2 12
15	16	12	127.0	2.25	STORM SEW CL A 2 12
16	17	12	21.3	3.50	STORM SEW CL A 2 12

DRAINAGE STRUCTURE SCHEDULE

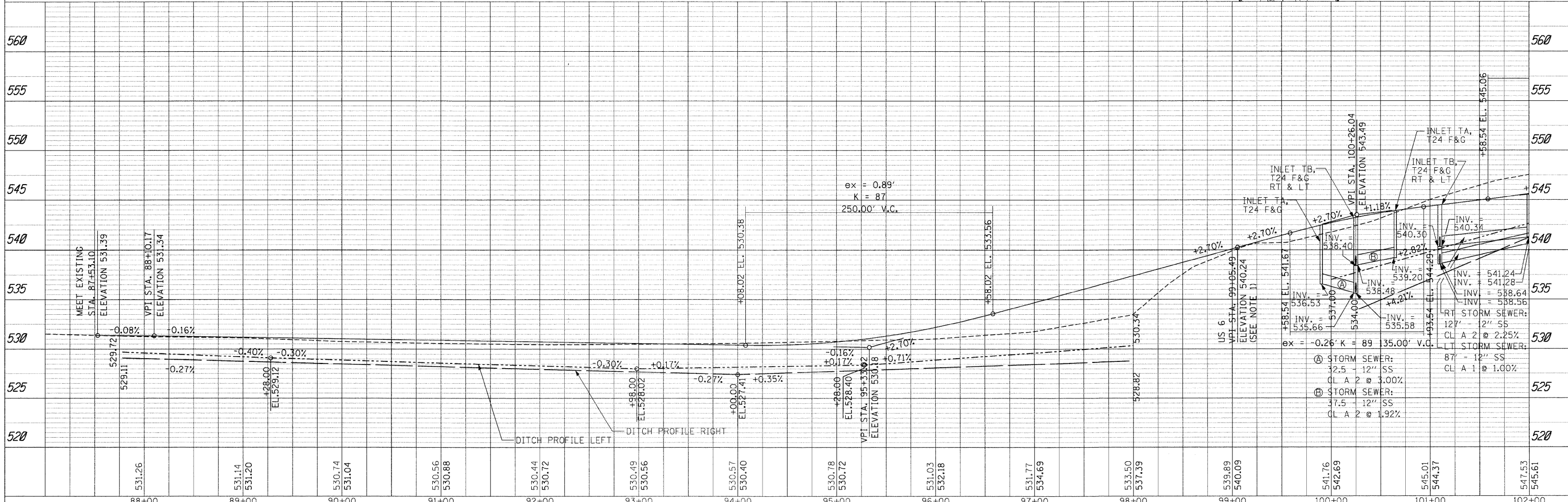
NO.	LOCATION		TYPE	RIM ELEV	INVERT ELEVATION	
	STATION	OFFSET			(IN)	(OUT)
1	96+80.00	29.00' LT	INLETS TA T24F&G	533.65		529.40
2	96+80.00	41.00' RT	INLETS TB T24F&G	533.41	529.05	528.97
3	96+80.00	65.0' RT	PRC FLAR END SEC 12			528.43
4	100+65.00	41.00' LT	INLETS TA T24F&G	543.45		539.20
5	100+25.00	41.00' LT	INLETS TB T24F&G	542.96	538.48	538.40
6	100+25.00	65.9' LT	PRC FLAR END SEC 12			537.74
7	100+25.00	55.88' RT	INLETS TB T24F&G	542.49	535.66	535.58
8	99+90.00	77.43' RT	INLETS TA T24F&G	541.37		536.53
9	100+39.00	95.0' RT	PRC FLAR END SEC 12			534.49

DRAINAGE STRUCTURE SCHEDULE

NO.	LOCATION		TYPE	RIM ELEV	INVERT ELEVATION	
	STATION	OFFSET			(IN)	(OUT)
11	102+00.00	41.00' LT	INLETS TB T24F&G	545.15	541.28	541.24
12	101+10.00	41.00' LT	INLETS TB T24F&G	544.02	540.34	540.30
13	101+10.00	60.6' LT	PRC FLAR END SEC 12			540.13
16	101+10.00	41.11' RT	INLETS TB T24F&G	544.02	538.64	538.56
17	101+10.00	71.5' RT	PRC FLAR END SEC 12			537.60



UNDERDRAIN NOTE:
USE MINIMUM 10' LENGTH OF PIPE UNDERDRAIN 4 SP AT ALL UNDERDRAIN CONNECTIONS TO DRAINAGE STRUCTURES



FILE NAME =	USER NAME = .USER	DESIGNED - DA	REVISED -
++\1812\CADD Sheets\0366408-shd-drain-ut-1.dgn		DRAWN - DA	REVISED -
PLOT SCALE = #SCALE#		CHECKED - AWM	REVISED -
PLOT DATE = 5/21/2010		DATE - 5/21/2010	REVISED -

STATE OF ILLINOIS
DEPARTMENT OF TRANSPORTATION

BRISBIN ROAD
DRAINAGE AND UTILITY

F.A.U. RTE.	SECTION	COUNTY	TOTAL SHEETS	SHEET NO.
	(32,47-4) HBK-4 & GIN	GRUNDY	351	124
			CONTRACT NO. 66408	

SCALE: 1"=50' SHEET NO. 124 OF 351 SHEETS STA. 87+78.00 TO STA. 102+00.00

ILLINOIS FED. AID PROJECT
FAT 80 & FAS 297 / FAU 392