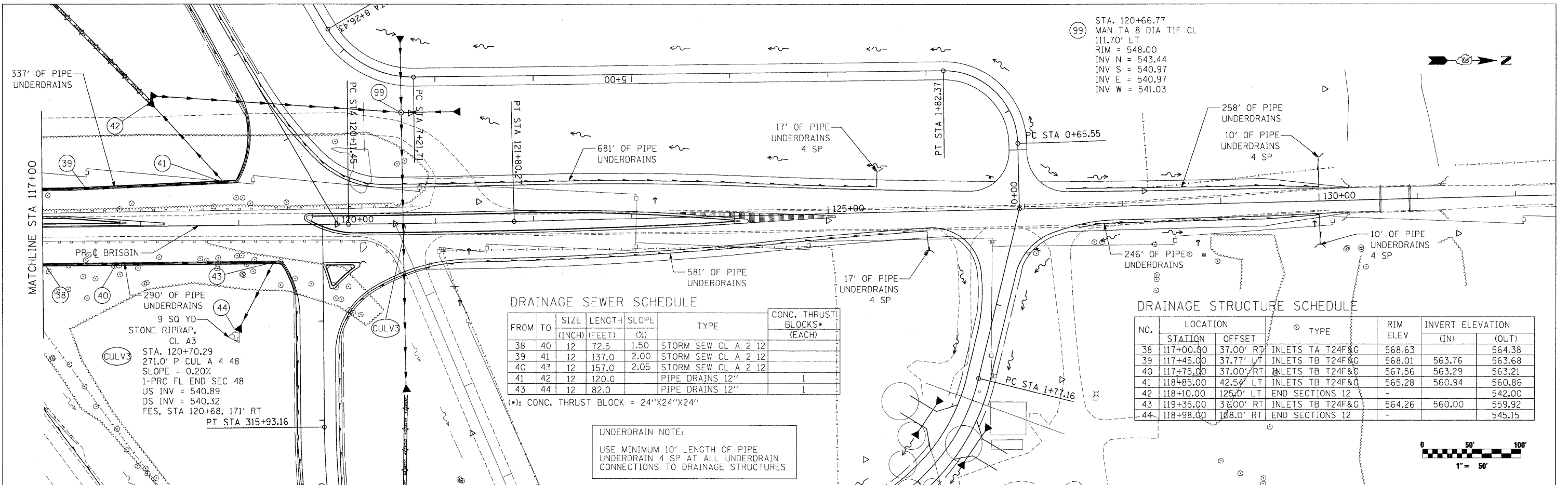


DATE: \_\_\_\_\_  
 BY: \_\_\_\_\_  
 SURVEYED: \_\_\_\_\_  
 PLOTTED: \_\_\_\_\_  
 CHECKED: \_\_\_\_\_  
 NO. \_\_\_\_\_

DATE: \_\_\_\_\_  
 BY: \_\_\_\_\_  
 SURVEYED: \_\_\_\_\_  
 PLOTTED: \_\_\_\_\_  
 CHECKED: \_\_\_\_\_  
 NO. \_\_\_\_\_



99 STA. 120+66.77  
 MAN TA 8 DIA TIF CL  
 111.70' LT  
 RIM = 548.00  
 INV N = 543.44  
 INV S = 540.97  
 INV E = 540.97  
 INV W = 541.03

**DRAINAGE SEWER SCHEDULE**

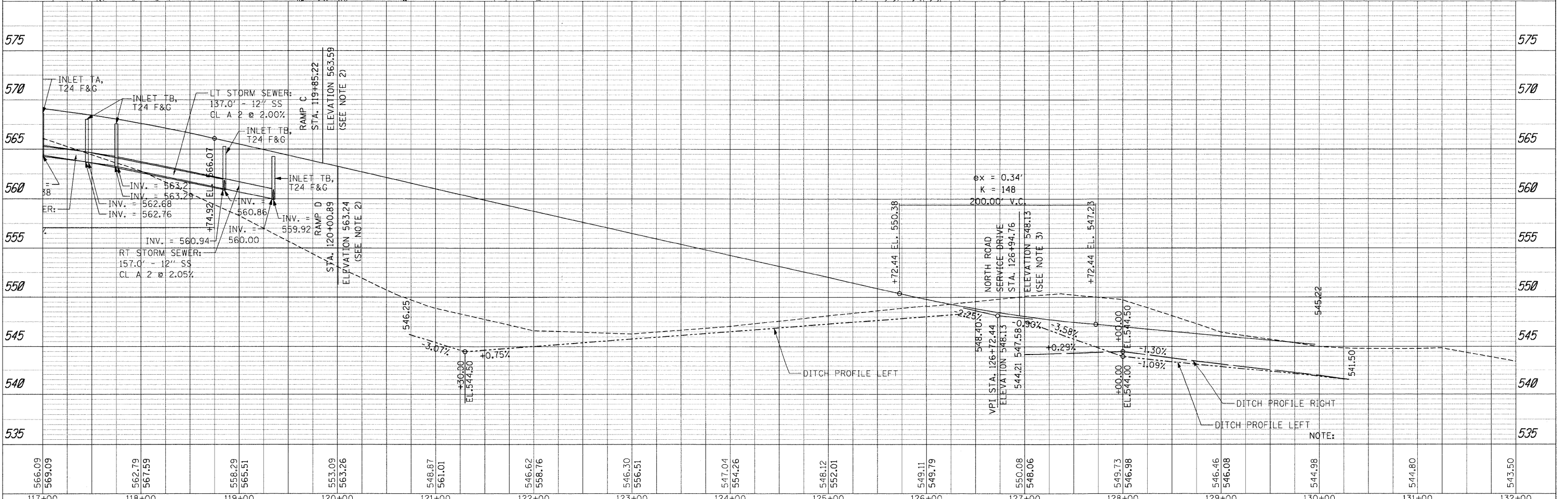
FROM	TO	SIZE (INCH)	LENGTH (FEET)	SLOPE (%)	TYPE	CONC. THRUST BLOCKS* (EACH)
38	40	12	72.5	1.50	STORM SEW CL A 2 12	
39	41	12	137.0	2.00	STORM SEW CL A 2 12	
40	43	12	157.0	2.05	STORM SEW CL A 2 12	
41	42	12	120.0		PIPE DRAINS 12"	1
43	44	12	82.0		PIPE DRAINS 12"	1

(\*) CONC. THRUST BLOCK = 24"X24"X24"

**DRAINAGE STRUCTURE SCHEDULE**

NO.	LOCATION		TYPE	RIM ELEV	INVERT ELEVATION	
	STATION	OFFSET			(IN)	(OUT)
38	117+00.00	37.00' RT	INLETS TA T24F&G	568.63		564.38
39	117+45.00	37.77' LT	INLETS TB T24F&G	568.01	563.76	563.68
40	117+75.00	37.00' RT	INLETS TB T24F&G	567.56	563.29	563.21
41	118+85.00	42.54' LT	INLETS TB T24F&G	565.28	560.94	560.86
42	118+10.00	125.0' LT	END SECTIONS 12	-		542.00
43	119+35.00	37.00' RT	INLETS TB T24F&G	564.26	560.00	559.92
44	118+98.00	108.0' RT	END SECTIONS 12	-		545.15

**UNDERDRAIN NOTE:**  
 USE MINIMUM 10' LENGTH OF PIPE UNDERDRAIN 4 SP AT ALL UNDERDRAIN CONNECTIONS TO DRAINAGE STRUCTURES



566.09	569.09	562.79	567.59	558.29	565.51	553.09	563.26	548.67	561.01	546.62	558.76	546.30	556.51	547.04	554.26	548.12	552.01	549.11	549.79	550.08	548.06	549.73	546.98	546.46	546.08	544.98	544.80	543.50
117+00	118+00	119+00	120+00	121+00	122+00	123+00	124+00	125+00	126+00	127+00	128+00	129+00	130+00	131+00	132+00													

FILE NAME = ...  
 USER NAME = ...  
 PLOT SCALE = ...  
 PLOT DATE = 5/21/2010

DESIGNED - DA  
 DRAWN - DA  
 CHECKED - AWM  
 DATE - 5/21/2010

REVISED -  
 REVISED -  
 REVISED -  
 REVISED -

**STATE OF ILLINOIS  
 DEPARTMENT OF TRANSPORTATION**

**BRISBIN ROAD  
 DRAINAGE AND UTILITY**  
 SCALE: 1"=50' SHEET NO. 126 OF 351 SHEETS STA. 117+00.00 TO STA. 132+00.00

F.A.U. SECTION (32,47-4) H&K-4 & GIN COUNTY GRUNDY TOTAL SHEETS 351 SHEET NO. 126 CONTRACT NO. 66408 ILLINOIS FED. AID PROJECT

FAT 80 & FAS 297 / FAU 392