

E 1/2, SEC. 13, T. 34 N., R. 7 E. 3RD P.M.

EXISTING BRISBIN ROAD
 CURVE DATA
 P.I. STA. 127+22.88
 $\Delta = 3^\circ 19' 06''$ (LT)
 $D = 0^\circ 47' 53''$
 $R = 7,179.89'$
 $T = 207.97'$
 $L = 415.83'$
 $E = 3.01'$
 P.C. STA. 125+14.91
 P.T. STA. 129+30.74

EXISTING BRISBIN ROAD
 CURVE DATA
 P.I. STA. 129+80.75
 $\Delta = 2^\circ 21' 04''$ (RT)
 $D = 2^\circ 21' 04''$
 $R = 2,436.85'$
 $T = 50.00'$
 $L = 100.00'$
 $E = 0.51'$
 P.C. STA. 129+30.74
 P.T. STA. 130+30.74

EXISTING BRISBIN ROAD
 CURVE DATA
 P.I. STA. 134+78.73
 $\Delta = 1^\circ 11' 39''$ (RT)
 $D = 0^\circ 18' 30''$
 $R = 18,575.33'$
 $T = 193.59'$
 $L = 387.17'$
 $E = 1.01'$
 P.C. STA. 132+85.14
 P.T. STA. 136+72.31

EXISTING NORTH ROAD
 CURVE DATA
 P.I. STA. 8+18.40
 $\Delta = 23^\circ 16' 43''$ (LT)
 $D = 10^\circ 51' 28''$
 $R = 527.69'$
 $T = 108.70'$
 $L = 214.39'$
 $E = 11.08'$
 P.C. STA. 7+09.70
 P.T. STA. 9+24.09

EXISTING NORTH ROAD
 CURVE DATA
 P.I. STA. 12+76.87
 $\Delta = 43^\circ 51' 54''$ (RT)
 $D = 19^\circ 05' 55''$
 $R = 300.00'$
 $T = 120.80'$
 $L = 229.68'$
 $E = 23.41'$
 P.C. STA. 11+56.08
 P.T. STA. 13+85.75

EXISTING NORTH ROAD
 CURVE DATA
 P.I. STA. 16+70.83
 $\Delta = 36^\circ 19' 46''$ (LT)
 $D = 17^\circ 14' 28''$
 $R = 332.32'$
 $T = 109.03'$
 $L = 210.71'$
 $E = 17.43'$
 P.C. STA. 15+61.80
 P.T. STA. 17+72.51

PARCEL 3SP0003

MARQUETTE BANK, TRUSTEE

TOTAL HOLDING = 546.487 AC.±
 TOTAL R.O.W. REQUIRED = 13.819 AC.±
 TRACT ONE = 13.756 AC.±
 TRACT TWO = 0.063 AC. (2743 SQ. FT.)±
 AREA IN EX. R.O.W. = 1.237 AC.
 TRACT ONE = 1.203 AC.
 TRACT TWO = 0.034 AC. (1477 SQ. FT.)±
 NET R.O.W. REQ'D. = 12.582 AC.±
 TRACT ONE = 12.553 AC.±
 TRACT TWO = 0.029 AC. (1266 SQ. FT.)±
 REMAINDER = 532.668 AC.±

TEMPORARY EASEMENTS = 0.145 AC.±
 TRACT ONE = 0.072 AC. (3136 SQ. FT.)±
 TRACT TWO = 0.073 AC. (3180 SQ. FT.)±
 PURPOSE: TO REMOVE BUILDINGS

PROP. SERVICE DRIVE
 CURVE DATA
 P.I. STA. = 7+79.45
 $\Delta = 60^\circ 00' 00''$ (RT)
 $D = 57^\circ 17' 45''$
 $R = 100.00'$
 $T = 57.74'$
 $L = 104.72'$
 $E = 15.47'$
 P.C. STA. = 7+21.71
 P.T. STA. = 8+26.43

PROP. SERVICE DRIVE
 CURVE DATA
 P.I. STA. = 11+60.79
 $\Delta = 27^\circ 57' 18''$ (LT)
 $D = 9^\circ 33' 56''$
 $R = 598.99'$
 $T = 149.09'$
 $L = 292.25'$
 $E = 18.28'$
 P.C. STA. = 10+11.69
 P.T. STA. = 13+03.94

AREA REMAINING THIS SIDE = 524.705 AC.

PARCEL 3SP0002

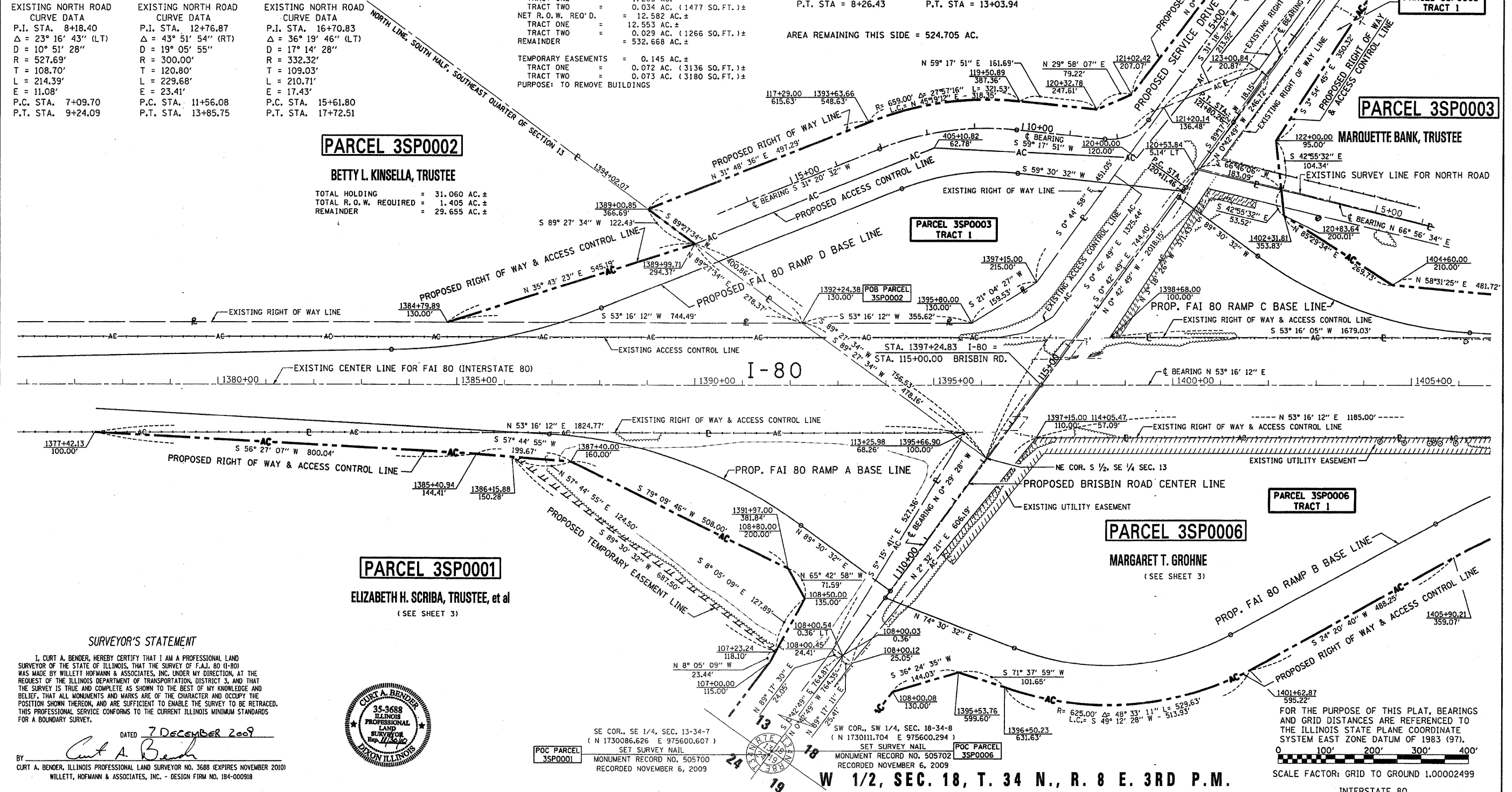
BETTY L. KINSELLA, TRUSTEE

TOTAL HOLDING = 31.060 AC.±
 TOTAL R.O.W. REQUIRED = 1.405 AC.±
 REMAINDER = 29.655 AC.±

PARCEL 3SP0003 TRACT 1

PARCEL 3SP0003 TRACT 1

MARQUETTE BANK, TRUSTEE



PARCEL 3SP0001

ELIZABETH H. SCRIBA, TRUSTEE, et al

(SEE SHEET 3)

PARCEL 3SP0006

MARGARET T. GROHNE

(SEE SHEET 3)

SURVEYOR'S STATEMENT

I, CURT A. BENDER, HEREBY CERTIFY THAT I AM A PROFESSIONAL LAND SURVEYOR OF THE STATE OF ILLINOIS, THAT THE SURVEY OF F.A.I. 80 (I-80) WAS MADE BY WILLET HOFMANN & ASSOCIATES, INC. UNDER MY DIRECTION, AT THE REQUEST OF THE ILLINOIS DEPARTMENT OF TRANSPORTATION, DISTRICT 3, AND THAT THE SURVEY IS TRUE AND COMPLETE AS SHOWN TO THE BEST OF MY KNOWLEDGE AND BELIEF, THAT ALL MONUMENTS AND MARKS ARE OF THE CHARACTER AND OCCUPY THE POSITION SHOWN THEREON, AND ARE SUFFICIENT TO ENABLE THE SURVEY TO BE RETRACED FOR A BOUNDARY SURVEY.

DATED 7 December 2009

BY *Curt A. Bender*
 CURT A. BENDER, ILLINOIS PROFESSIONAL LAND SURVEYOR NO. 3688 (EXPIRES NOVEMBER 2010)
 WILLET HOFMANN & ASSOCIATES, INC. - DESIGN FIRM NO. 184-000918



SE COR., SE 1/4, SEC. 13-34-7
 (N 1730086.626 E 975600.607)
 SET SURVEY NAIL
 MONUMENT RECORD NO. 505700
 RECORDED NOVEMBER 6, 2009

SW COR., SW 1/4, SEC. 18-34-8
 (N 1730111.704 E 975600.294)
 SET SURVEY NAIL
 MONUMENT RECORD NO. 505702
 RECORDED NOVEMBER 6, 2009

FOR THE PURPOSE OF THIS PLAT, BEARINGS AND GRID DISTANCES ARE REFERENCED TO THE ILLINOIS STATE PLANE COORDINATE SYSTEM EAST ZONE DATUM OF 1983 (97).
 0 100' 200' 300' 400'
 SCALE FACTOR: GRID TO GROUND 1.00002499
 INTERSTATE 80

STATE OF ILLINOIS
 DEPARTMENT OF TRANSPORTATION

RIGHT OF WAY PLANS

PROJECT: STA. 1376+00.00 TO STA. 1406+00.00
 JOB NO. R-93-002-04
 SHEET NO. 1 OF 3 SHEETS

F.A.I. RTE.	SECTION	COUNTY	TOTAL SHEETS	SHEET NO.
80	(32, 47-4) HBK-4	GRUNDY	351	127
FED. ROAD DIST. NO. ILLINOIS FED. AID PROJECT			CONTRACT NO. 66408	

* FAI 80 & PAS 297/FAU 392

WILLET HOFMANN & ASSOCIATES, INC.
 CONSULTING ENGINEERS
 100 East Second Street
 Peoria, Illinois 61602
 Phone: 309.673.1000
 Fax: 309.673.1001
 www.willett-hofmann.com