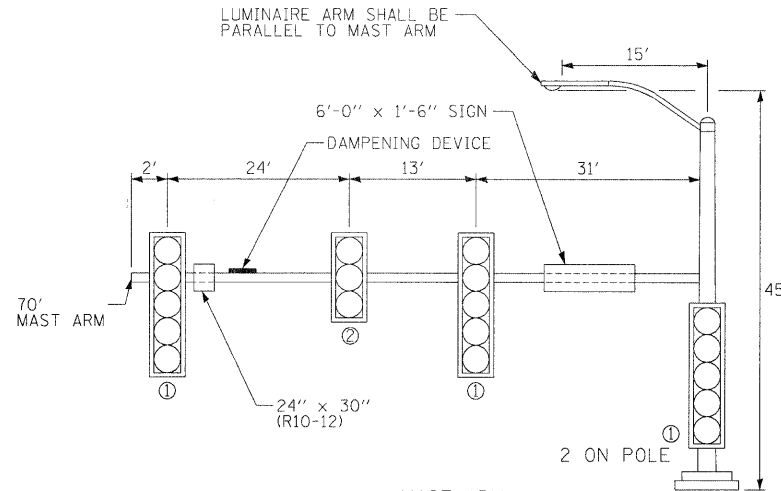
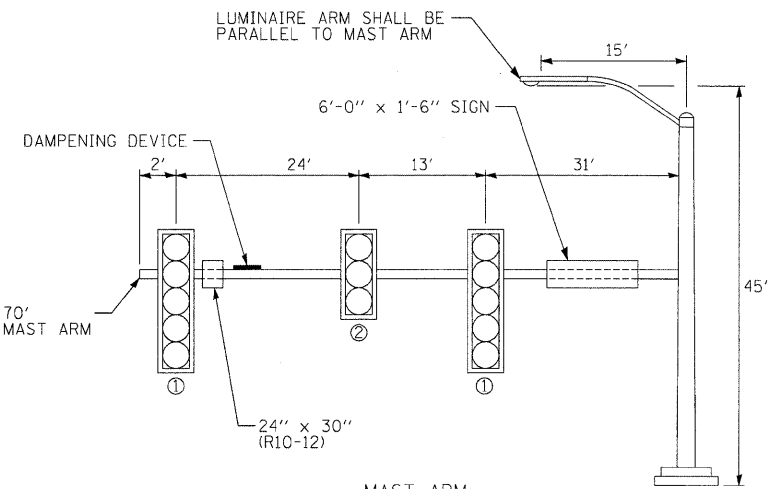


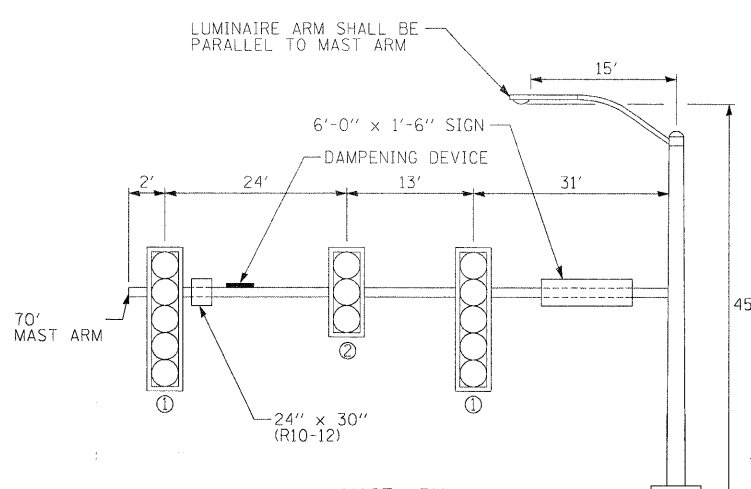
MAST ARM
LOADING DIAGRAM
BRISBIN ROAD
NORTHEAST QUADRANT
NORTHBOUND VIEW



MAST ARM
LOADING DIAGRAM
US ROUTE 6
SOUTHWEST QUADRANT
SOUTHBOUND VIEW



MAST ARM
LOADING DIAGRAM
US ROUTE 6
SOUTHEAST QUADRANT
EASTBOUND VIEW



MAST ARM
LOADING DIAGRAM
BRISBIN ROAD
NORTHWEST QUADRANT
WESTBOUND VIEW

LEGEND

① 5-SECTION SIGNAL HEAD
② 3-SECTION SIGNAL HEAD

NOTE:
ALL SIGNALS SHALL HAVE
BACKPLATES

NOTE:

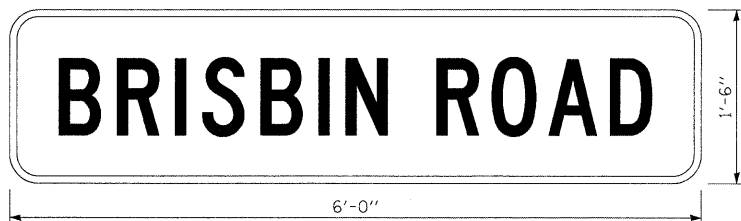
THIS NOTE APPLIES TO ALL MAST ARM LOADING DIAGRAMS. DAMPENING DEVICES SHALL CONSIST OF 24" X 36" TYPE 1 UNPAINTED ALUMINUM SIGN STOCK MOUNTED HORIZONTALLY ON TOP OF MAST ARM AND STREET LIGHT ARM WITH 36" LENGTH PERPENDICULAR TO THE MAST ARM. COST OF DAMPENING DEVICE IS INCLUDED IN THE MAST ARM PAY ITEM.

FOUNDATION DEPTH TABLE

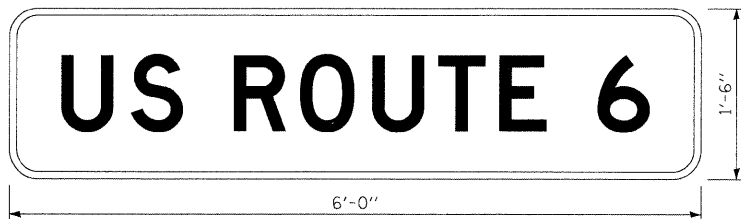
TYPE	LOCATION	FOUNDATION
75' MAST ARM	NORTH LEG	15'
70' MAST ARM	EAST LEG	15'
70' MAST ARM	SOUTH LEG	15'
70' MAST ARM	WEST LEG	15'

GENERAL NOTES - ALL LOCATIONS

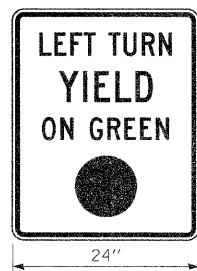
- THE TRAFFIC SIGNAL SECTION AT THE ILLINOIS DEPARTMENT OF TRANSPORTATION, DISTRICT 3, SHALL BE NOTIFIED AT 815-434-8506 AT LEAST 72 HOURS PRIOR TO TURNING ON ANY FLASHER OR CONTROLLER UNITS.
- THE CONTRACTOR SHALL BE RESPONSIBLE FOR PROTECTING UTILITY PROPERTY DURING CONSTRUCTION OPERATIONS AS OUTLINED IN ARTICLE 107.31 OF THE STANDARD SPECIFICATIONS. A MINIMUM OF 48 HOURS ADVANCE NOTICE IS REQUIRED FOR NON-EMERGENCY WORK. THE JULIE NUMBER IS 800-892-0123.
- ALL TRAFFIC CONTROL AND OTHER ADVISORY SIGNS NEEDED FOR CONSTRUCTION ARE TO BE FURNISHED BY THE CONTRACTOR IN ACCORDANCE WITH SECTION 701 OF THE STANDARD SPECIFICATIONS.
- ALL TRAFFIC SIGNAL HEADS SHALL BE 12-INCH POLYCARBONATE.
- TRAFFIC SIGNAL HEADS SHALL BE PROPERLY COVERED PRIOR TO INTERSECTION TURN-ON OR AS DIRECTED BY THE ENGINEER. THIS COST SHALL BE INCLUDED WITH THE COST OF THE ASSOCIATED TRAFFIC SIGNAL PAY ITEMS.
- A 1/4" DIAMETER CONTINUOUS RODENT RESISTANT NYLON ROPE SHALL BE FURNISHED AND LEFT IN PLACE IN ALL CONDUITS BETWEEN HANDHOLES AND FOUNDATIONS OR CONTROLLER. THIS COST SHALL BE INCLUDED WITH THE COST OF CONDUIT PAY ITEM.
- THE CONTRACTOR SHALL ARRANGE FOR A FACTORY OR SUPPLIER REPRESENTATIVE TO BE PRESENT AT THE INTERSECTION WHEN THE SIGNAL IS TURNED ON. COST TO BE INCLUDED WITH THE TRAFFIC SIGNAL CONTROLLER PAY ITEM.
- ALL CONDUIT IN TRENCH SHALL BE P.V.C. ALL PUSHED CONDUIT MAY BE P.V.C. OR GALVANIZED STEEL. CONDUIT ATTACHED TO STRUCTURES SHALL BE GALVANIZED STEEL.
- NO ADDITIONAL COMPENSATION WILL BE ALLOWED FOR PLACING CONDUIT AT A GREATER THAN 2 5/32" MINIMUM DEPTH TO AVOID OBSTACLES SUCH AS UNDERGROUND UTILITIES.
- THE ELECTRICAL CONDUCTORS FOR ALL TRAFFIC SIGNAL HEADS SHALL BE SOLID, SOFT COPPER.
- ALL THREADS OF BOLTS USED IN THE ASSEMBLY OF TRAFFIC SIGNAL COMPONENTS SHALL BE COATED WITH A NON-LEAD BASED ANTI-SEIZE COMPOUND, SIMILAR TO LEAD PLATE, PRIOR TO ASSEMBLY.
- ALL HARDWARE SHALL BE TIGHTENED AND WELL SECURED, CABLES SHALL BE NEATLY WOUND IN HANDHOLES. CABLES SHALL BE NEATLY TRAINED IN THE CONTROLLER CABINET.
- ALL TRAFFIC SIGNAL WIRING SHALL EXTEND FROM CONTROLLER TO SIGNAL. SPLICES IN JUNCTION BOXES WILL NOT BE ALLOWED.
- THE CONTROLLER CABINET SHALL BE PLACED SO THAT A TECHNICIAN MAY SEE THE INTERSECTION OVER THE TOP OF THE CABINET WHILE WATCHING THE COMPONENTS IN THE CABINET.
- THE PROPOSED TRAFFIC SIGNAL CONTROLLER CABINET SHALL BE FURNISHED WITH A MANUAL CONTROL SWITCH AND MANUAL CONTROL CORD WITHIN THE POLICE DOOR COMPARTMENT. THIS WORK SHALL BE INCLUDED IN THE CONTROLLER CABINET PAY ITEM.
- THE CONTRACTOR SHALL PROVIDE A SELF-ADHERED PHASE DIAGRAM ON THE INSIDE OF THE CONTROLLER CABINET DOOR.
- THE CONTRACTOR SHALL BE RESPONSIBLE FOR OBTAINING ELECTRICAL SERVICE FOR THE TRAFFIC SIGNALS. THE CONTRACTOR SHALL CONTACT THE UTILITY COMPANY PRIOR TO BEGINNING WORK TO OBTAIN THE UTILITY COMPANY REQUIREMENTS FOR THE SERVICE INSTALLATION.
- BACKPLATES SHALL BE POLYCARBONATE, LOUVERED, PLASTIC FORMED BACKPLATES.
- ALL VEHICLE AND PEDESTRIAN SIGNAL HEADS SHALL HAVE POLYCARBONATE BLACK HOUSING AND BLACK BRACKETS.
- THE ELEVATION OF THE TOP OF THE DOUBLE HANDHOLE SHALL BE LESS THAN THE ELEVATION OF THE TOP OF THE CONTROLLER FOUNDATION.
- ALL UNINTERRUPTIBLE POWER SUPPLIES SHALL BE EQUIPPED WITH ALPHA GUARD MONITORS.
- ALL GROUNDING MATERIALS FOR CONCRETE FOUNDATIONS SHALL REFER TO SECTION 807 OF THE STANDARD SPECIFICATIONS.
- ALL AREAS DISTURBED BY THE CONTRACTOR SHALL BE RESTORED WITH SEED OR SOD TO THE SATISFACTION OF THE ENGINEER. SEEDING OR SODDING SHALL NOT BE PERMITTED AT ANY TIME WHEN THE GROUND IS FROZEN, WET, OR IN AN UNTILLABLE CONDITION.
- THE SURGE PROTECTOR IN THE CONTROLLER CABINET SHALL HAVE AN INDICATOR LIGHT.
- THE MAST ARM FOUNDATIONS SHALL BE LOCATED A MINIMUM 6 FT. FROM THE FACE OF CURB OR A MINIMUM 18 FT. FROM THE EDGE OF PAVEMENT TO THE FACE OF FOUNDATION WHERE THERE IS NO CURB, UNLESS OTHERWISE DIRECTED BY THE ENGINEER. IN CURB AREA, GET MORE THAN 6 FT. IF POSSIBLE IF THE SIGNAL HEAD STILL LINES UP IN CENTER OF LANE.
- CHANGEABLE MESSAGE SIGNS ARE REQUIRED FOR BOTH DIRECTIONS ON US 6. ONE WEEK PRIOR TO SIGNAL TURN-ON, THE MESSAGE SHOULD READ "NEW SIGNAL AHEAD/TURN ON DATE" FOR THREE WEEKS AFTER, THE MESSAGE SHOULD READ "NEW SIGNAL AHEAD/BE PREPARED TO STOP".
- THE CONTROLLER SPECIAL SHALL INCLUDE TWO COPIES OF THE LATEST VERSION OF MARC OR ARIES SOFTWARE AND SHALL BE CAPABLE OF UPLOADING AND DOWNLOADING ITS DATABASE TO A LAPTOP COMPUTER. ALL NECESSARY SOFTWARE, CABLES AND TRAINING SHALL BE PROVIDED BY THE CONTRACTOR.
- ALL MAST ARM-MOUNTED SIGNAL HEADS ON AN INDIVIDUAL MAST ARM SHALL BE MOUNTED SO THAT THE RED INDICATIONS ARE LEVEL WITH EACH OTHER.
- LOOPS IN THE SAME LANE SHALL BE WOUND CLOCKWISE & COUNTERCLOCKWISE IN ALTERNATE LOOPS, LOOPS IN ADJACENT LANES SHALL BE WOUND THE SAME.
- ALL DETECTOR LOOP AMPLIFIERS SHALL BE CARD RACK MOUNTED AND FURNISHED WITH PLASTIC TAGS LABELED WITH RESPECTIVE PHASES AND DIRECTION AS LISTED IN THE DETECTOR LOOP CHART, MINIMUM TAG SIZE SHALL BE 3/8" X 3/4". TAGS SHALL BE MADE OF MATERIAL THAT DOES NOT ALLOW WRITING TO FADE OVER TIME.
- THE LENGTH OF DETECTOR LOOP CABLE FROM THE CURB TO THE JUNCTION BOX OR HANDHOLE IS INCIDENTAL TO THE DETECTOR LOOP PAY ITEM.



3/4" BORDER
8" SERIES C LETTERS
TYPE ZZ SHEETING REQUIRED
2 SIGNS REQUIRED
= 9.0 SQ FT EACH
= 18.0 SQ FT TOTAL



3/4" BORDER
8" SERIES D LETTERS
TYPE ZZ SHEETING REQUIRED
2 SIGNS REQUIRED
= 9.0 SQ FT EACH
= 18.0 SQ FT TOTAL



R10-12
4 SIGNS REQUIRED: 5.0 SQ. FT. EACH
THIS SIGN SHALL BE LOCATED 0'-9" TO THE RIGHT OF EACH 5 SECTION MAST ARM MOUNTED LEFT TURN SIGNAL

FILE NAME t:\1812\cadd sheets\0366408-sht-ts.dgn	USER NAME _USER_	DESIGNED - JFW	REVISED -
PLOT SCALE = *SCALE*	DRAWN - LG	CHECKED - JFW	REVISED -
PLOT DATE = 5/19/2010	DATE - 5/19/2010		REVISED -

STATE OF ILLINOIS
DEPARTMENT OF TRANSPORTATION

BRISBIN RD & US-6 TRAFFIC SIGNAL PLAN

SCALE: 1"=20' SHEET NO. 146 OF 351 SHEETS STA. TO STA.

F.A.U. RTE.	SECTION	COUNTY	TOTAL SHEETS	SHEET NO.
•	(32,47-4) HBK-4 & GIN	GRUNDTY	351	146
CONTRACT NO. 66408				