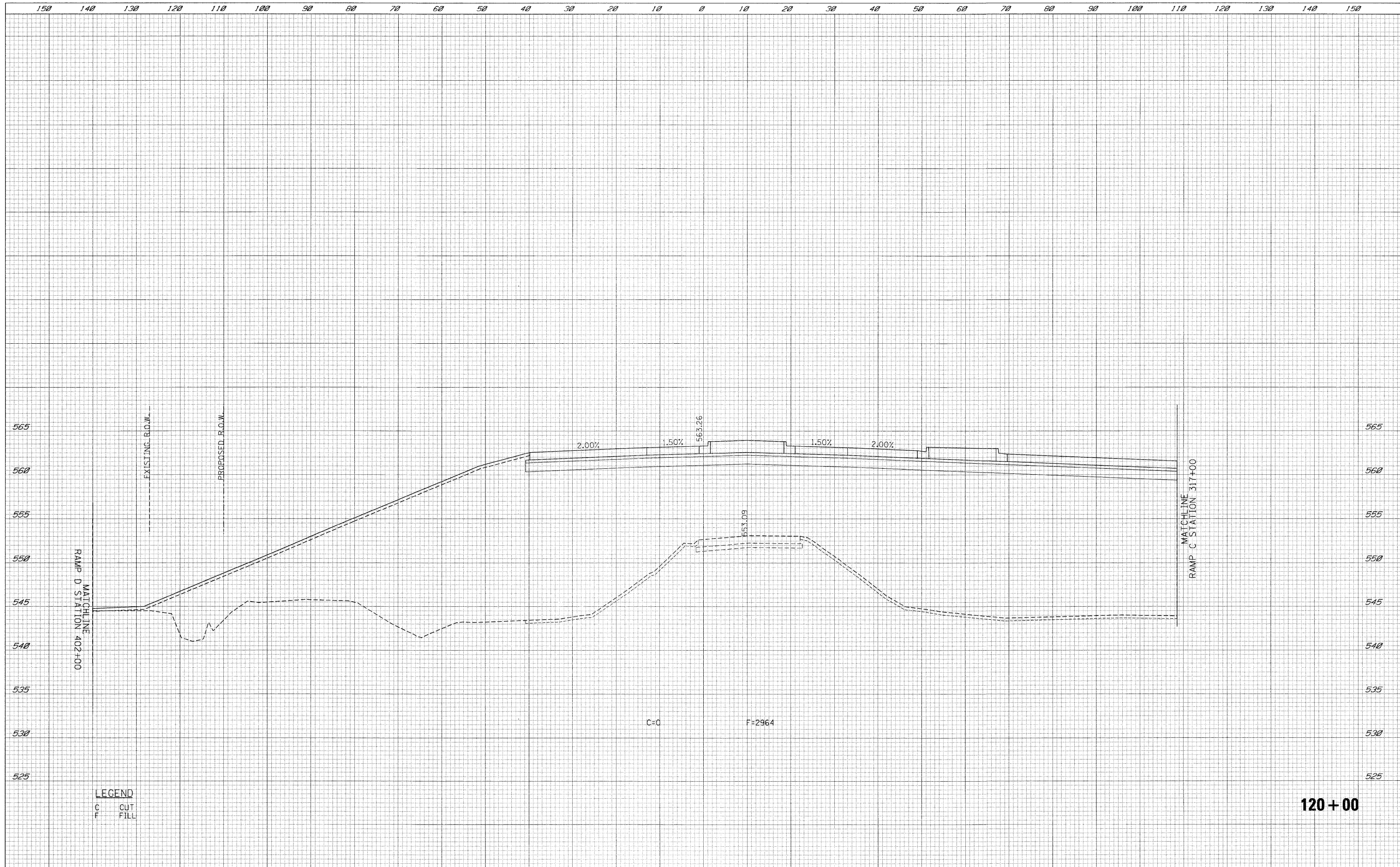


DATE	
BY	
SURVEYED	
PLOTTED	
TEMPLATE	
AREAS	
CHECKED	
FINAL SURVEY	
NOTE BOOK	
NO.	

DATE	
BY	
SURVEYED	
PLOTTED	
TEMPLATE	
AREAS	
CHECKED	
ORIGINAL SURVEY	
NOTE BOOK	
NO.	



120+00

FILE NAME -	USER NAME - USER	DESIGNED - LG	REVISED -	STATE OF ILLINOIS DEPARTMENT OF TRANSPORTATION	BRISBIN CROSS SECTIONS	F.A.U. RTE.	SECTION	COUNTY	TOTAL SHEETS	SHEET NO.
\\s1812\cadd\sheet\0366408-shl-XSCB-ris.dgn		DRAWN - LG	REVISED -			(32,47-4) HBK-4 & G(N)	GRUNDY	351	206	
PLOT SCALE = *SCALE*		CHECKED - AKK	REVISED -			CONTRACT NO. 66408				
PLOT DATE = 5/19/2010		DATE - 5/19/2010	REVISED -			ILLINOIS FED. AID PROJECT				
SCALE: H: 1"=10' V: 1"=5'						SHEET NO. 206 OF 351 SHEETS		STA. 120+00 TO STA. 120+00		FAI 80 & FAS 297 / FAU 392