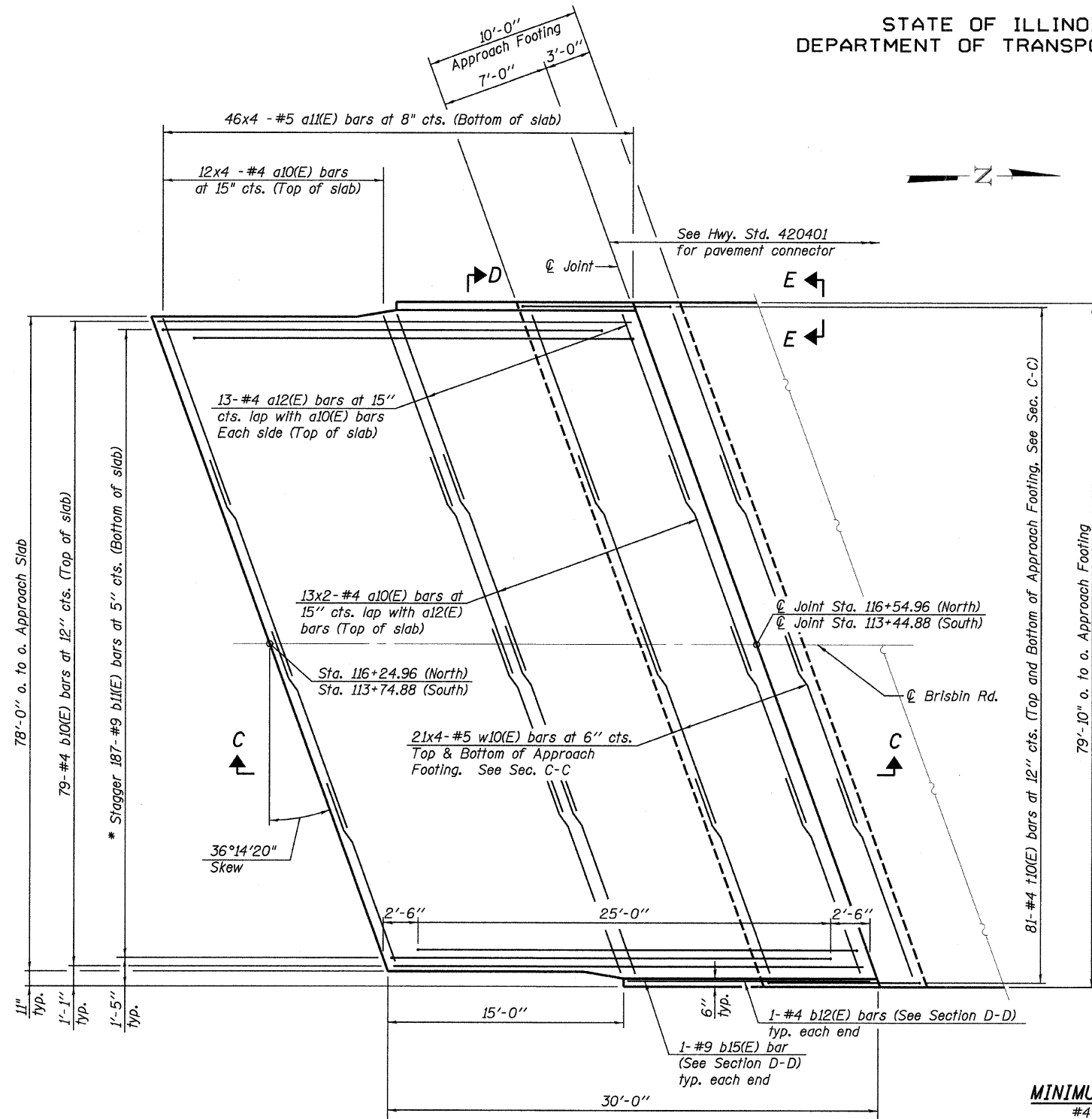


STATE OF ILLINOIS  
DEPARTMENT OF TRANSPORTATION

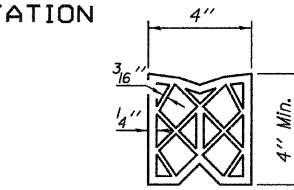
Notes

1. See sheet 16 for Sections C-C & D-D.
2. Bars indicated thus 46x4-#5 indicates 46 lines of bars with 4 lengths per line.



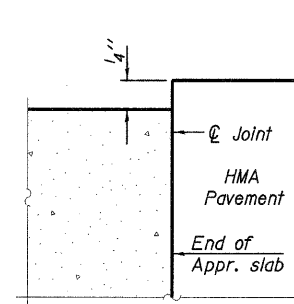
PLAN

North Approach Shown,  
South Approach Similar, Opposite Hand

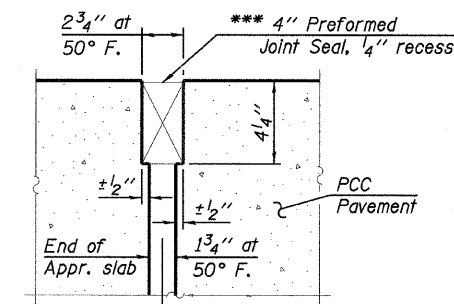


PREFORMED  
JOINT SEAL

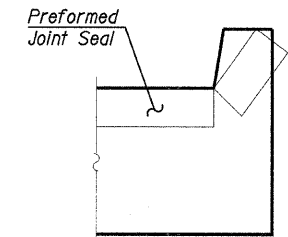
\*\*\* Cost included with Concrete Superstructure.



FLEXIBLE PAVEMENT



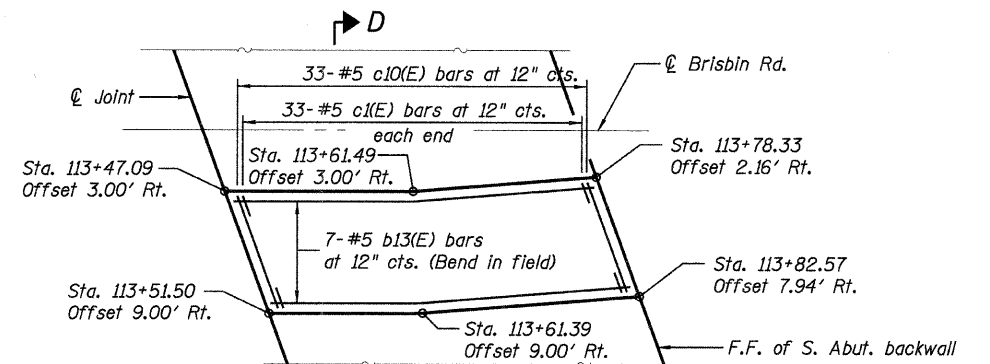
RIGID PAVEMENT



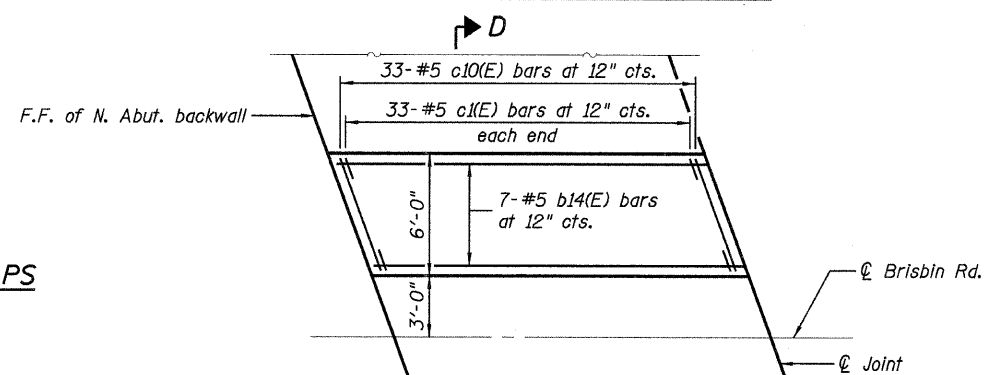
VIEW E-E

Angle Preformed Joint Seal at 45°  
at curbs when req'd for drainage.

DETAIL A



SOUTH APPROACH MEDIAN PLAN



NORTH APPROACH MEDIAN PLAN

BRIDGE APPROACH SLAB DETAILS I  
STRUCTURE NO. 032-0115

MINIMUM BAR LAPS

- #4 bar = 1'-11"
- #5 bar = 2'-2"

\* Tilt #9 b1 (E) bars as required to maintain clearance.

|          |       |
|----------|-------|
| DESIGNED | - MWM |
| CHECKED  | - BJN |
| DRAWN    | - MWM |
| CHECKED  | - BJN |

LOCHNER

H.W. LOCHNER, INC.  
CONSULTING ENGINEERS & PLANNERS  
20 NORTH WACKER DRIVE SUITE 1200  
CHICAGO, IL 60606

|   |      |                         |        |              |           |
|---|------|-------------------------|--------|--------------|-----------|
| SHEET NO.<br>15 OF 31<br>SHEETS                 | RTE. | SECTION                 | COUNTY | TOTAL SHEETS | SHEET NO. |
|   | *    | (32, 47-4) HBK-4 & (G)N | GRUNDY | 351          | 297       |
| CONTRACT NO. 66408                              |      |                         |        |              |           |
| FED. ROAD DIST. NO. - ILLINOIS FED. AID PROJECT |      |                         |        |              |           |

\* FAI 80 & FAS 297 / FAU 392