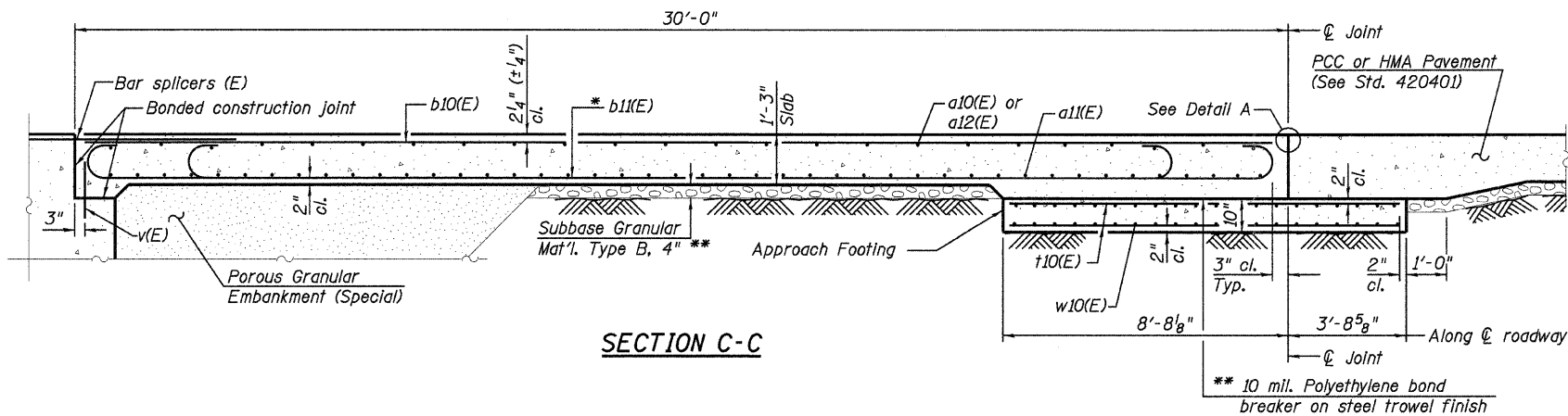
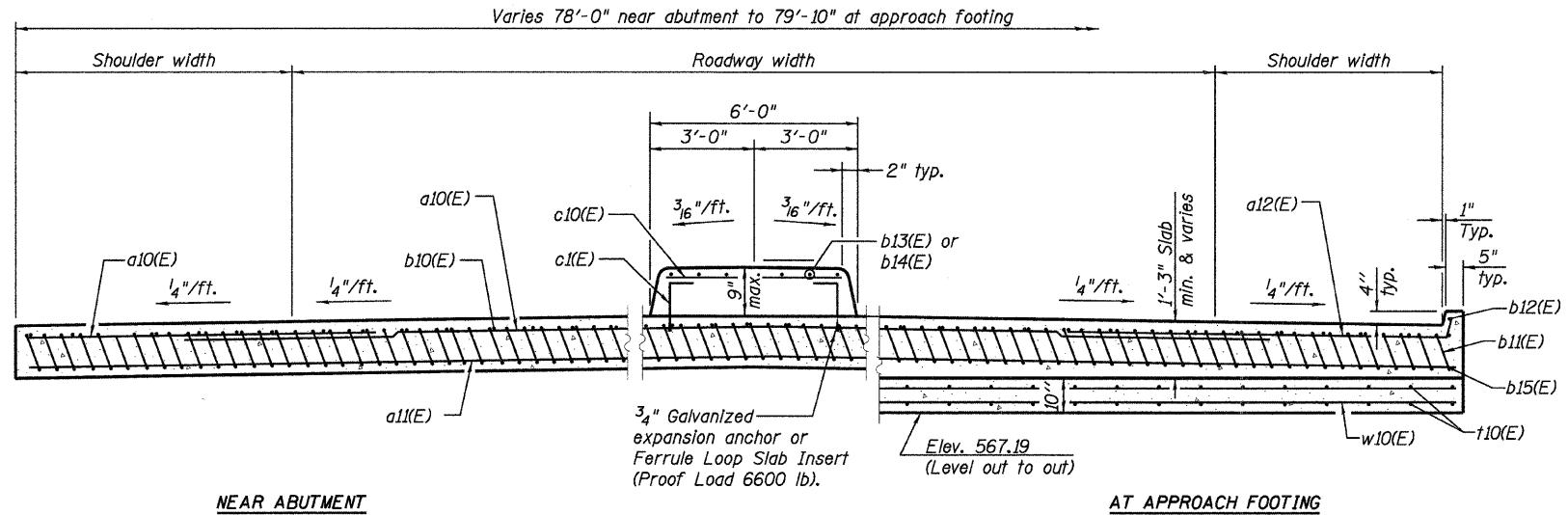
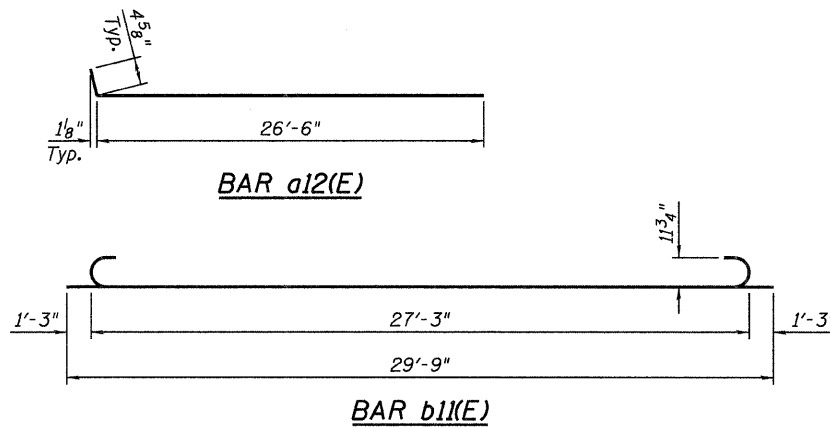


STATE OF ILLINOIS
DEPARTMENT OF TRANSPORTATION



SECTION C-C

* Tilt #9 b11(E) bars as required to maintain clearance.
** Cost Included with Concrete Superstructure.



NEAR ABUTMENT

AT APPROACH FOOTING

SECTION D-D

(See Plan for dimensions not shown)

Notes

- See sheet 15 for Detail A.
- Approach slab, approach median and parapet concrete shall be paid for as Concrete Superstructure.
- Approach footing concrete shall be paid for as Concrete Structures.
- Reinforcement shall be paid for as Reinforcement Bars, Epoxy Coated.
- For v(E) bar details, see sheets 22 & 23.
- The approach footing maximum applied service bearing pressure (Qmax) = 2.0 ksf.
- For bar splicer details, see sheet 29.
- Cost of excavation for approach footing included with Concrete Structures.
- For Porous Granular Embankment (Special) and drainage treatment details, see sheet 2.
- Cost of expansion anchors/inserts is included in the cost of Reinforcement Bars, Epoxy Coated.

TWO APPROACHES
BILL OF MATERIAL

Bar	No.	Size	Length	Shape
a10(E)	148	#4	25'-7"	—
a11(E)	368	#5	26'-4"	—
a12(E)	52	#4	26'-11"	—
b10(E)	158	#4	29'-8"	—
b11(E)	364	#9	29'-9"	C
b12(E)	4	#4	14'-8"	—
b13(E)	7	#5	30'-11"	—
b14(E)	7	#5	31'-6"	—
b15(E)	4	#9	14'-8"	—
t10(E)	400	#4	12'-0"	—
w10(E)	336	#5	26'-4"	—
c10(E)	66	#5	6'-8"	—
c11(E)	132	#5	1'-6"	—
Concrete Superstructure			Cu. Yd.	248.0
Concrete Structures			Cu. Yd.	61.2
Reinforcement Bars, Epoxy Coated			Pound	67,320

BRIDGE APPROACH SLAB DETAILS II
STRUCTURE NO. 032-0115

DESIGNED - MWM
CHECKED - BBN
DRAWN - MWM
CHECKED - BBN

LOCHNER

H.W. LOCHNER, INC.
CONSULTING ENGINEERS & PLANNERS
20 NORTH WACKER DRIVE SUITE 1200
CHICAGO, IL 60606

SHEET NO. 16 OF 31 SHEETS	RTE.	SECTION	COUNTY	TOTAL SHEETS	SHEET NO.
	*	(32, 47-4) HBK-4 & (G)N	GRUNDY	351	298
CONTRACT NO. 66408					
FED. ROAD DIST. NO.		ILLINOIS FED. AID PROJECT			

* FAI 80 & FAS 297 / FAU 392