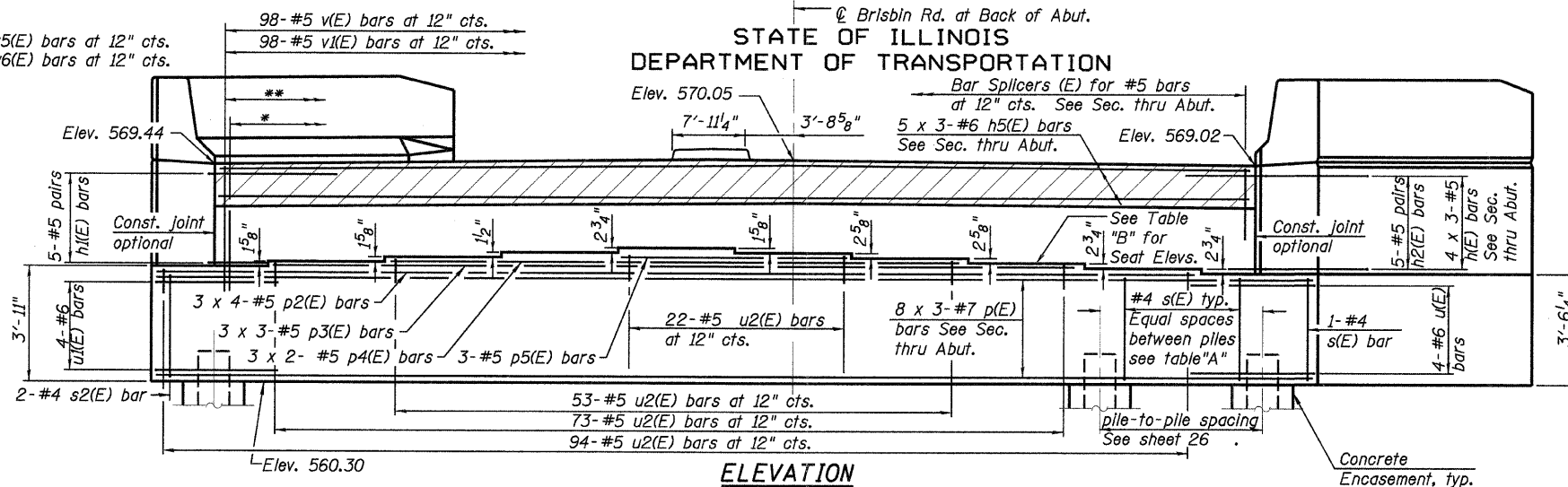
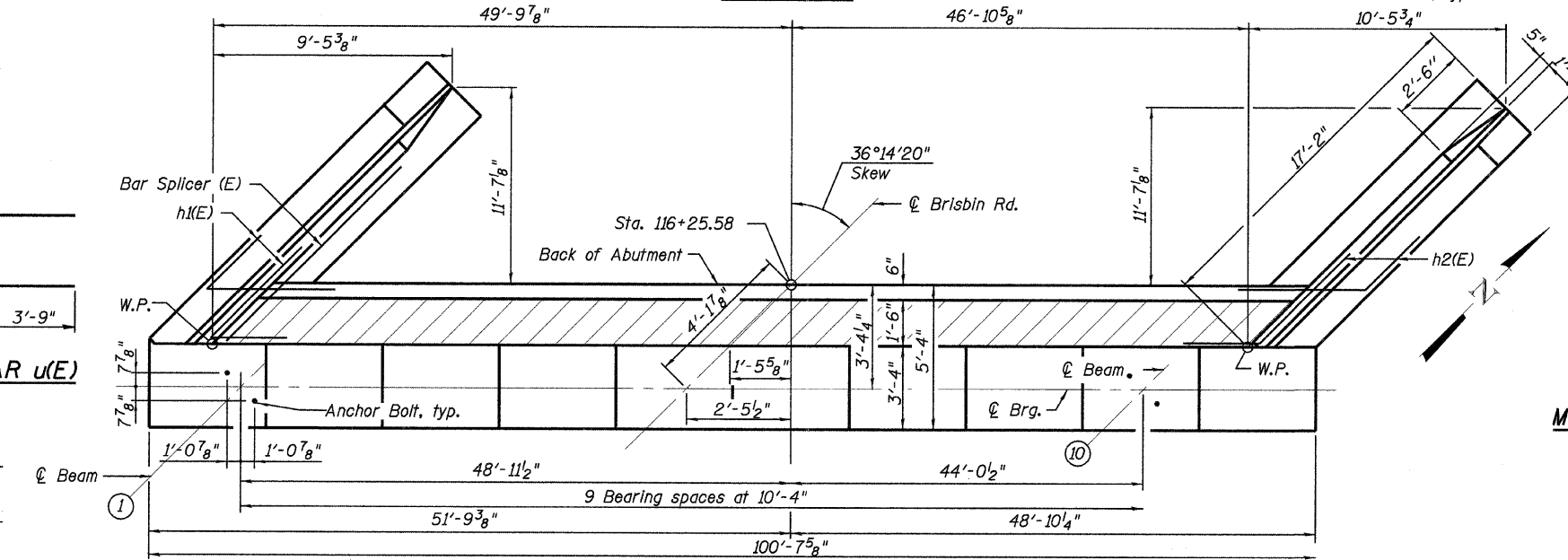


STATE OF ILLINOIS
DEPARTMENT OF TRANSPORTATION

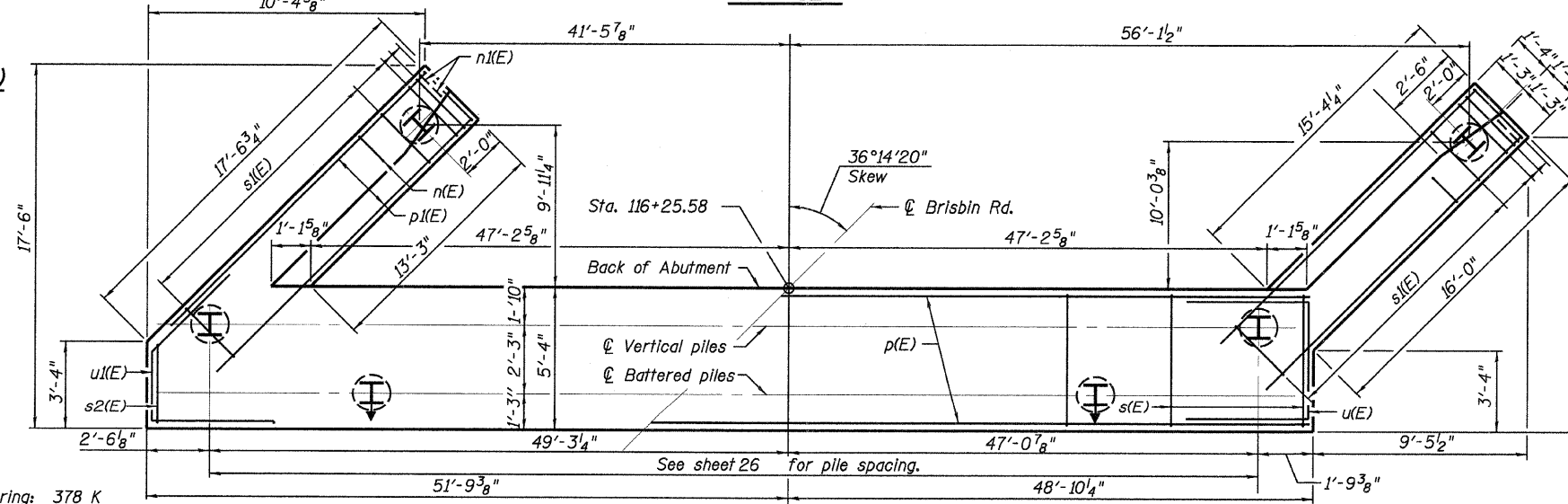
Bar Splicers (E) for #5 bars at 12" cts. See Sec. thru Abut.
5 x 3-#6 h5(E) bars See Sec. thru Abut.



ELEVATION



TOP VIEW



PLAN-PILE CAP

TABLE "A"

Pile-to-Pile Spacing	Number of Bars
4'-7"	3
3'-3"	2
4'-2"	3
5'-4"	4

TABLE "B"

Beam	Beam Seat Elevation
1	564.22
2	564.36
3	564.50
4	564.63
5	564.86
6	564.72
7	564.50
8	564.28
9	564.05
10	563.82

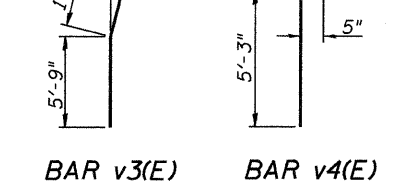
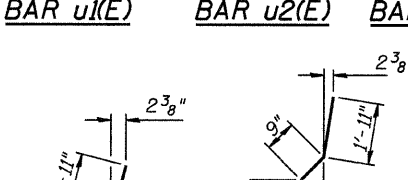
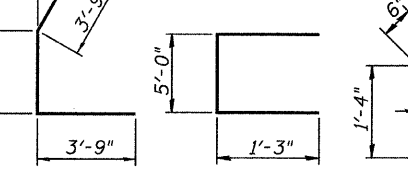
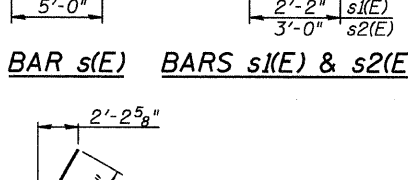
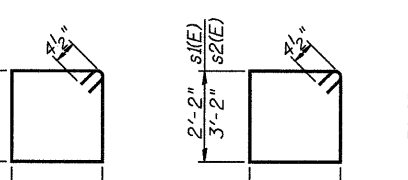
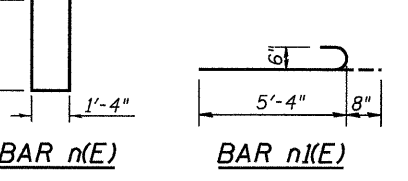
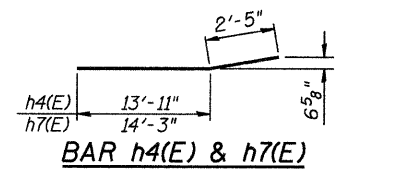
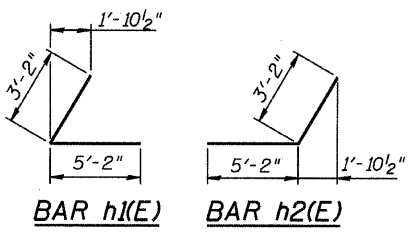
**NORTH ABUTMENT
BILL OF MATERIAL**

Bar No.	Size	Length	Shape
h(E)	12	#5	34'-2"
h2(E)	10	#5	8'-4"
h3(E)	10	#5	8'-4"
h4(E)	11	#4	16'-11"
h5(E)	8	#4	16'-4"
h6(E)	15	#6	34'-8"
h7(E)	11	#4	15'-9"
h7(E)	8	#4	16'-8"
n(E)	31	#6	12'-0"
n(E)	12	#6	6'-0"
p(E)	24	#7	36'-8"
p(E)	12	#7	17'-5"
p2(E)	12	#5	25'-1"
p3(E)	9	#5	26'-0"
p4(E)	6	#5	27'-2"
p5(E)	3	#5	20'-4"
s(E)	66	#4	17'-1"
s(E)	28	#4	9'-5"
s2(E)	2	#4	13'-1"
u(E)	3	#6	12'-6"
u(E)	3	#6	10'-7"
u2(E)	242	#5	7'-6"
v(E)	98	#5	2'-9"
v(E)	98	#5	2'-11"
v2(E)	35	#6	7'-9"
v3(E)	6	#6	7'-8"
v4(E)	32	#6	7'-11"
v5(E)	98	#5	6'-9"
v6(E)	98	#5	6'-4"
Structure Excavation	Cu. Yd.	180.0	
Concrete Structures	Cu. Yd.	134.7	
Reinforcement Bars, Epoxy Coated	Pound	11,210	
Furnishing Steel Piles HP14x89	Foot	806	
Driving Piles	Foot	806	
Test Pile Steel HP14x89	Each	1	
Concrete Encasement	Cu. Yd.	14.2	
Concrete Sealer	Sq. Ft.	892	

MINIMUM BAR LAPS
#5 bar = 3'-0"
#6 bar = 3'-7"
#7 bar = 4'-10"

For details of Bar Splicers, see sheet 29.
For details of piles and Concrete Encasement, see sheet 28.
Bars indicated thus 5 x 3 - #6 etc. indicates 5 lines of bars with 3 lengths per line.

**NORTH ABUTMENT PLAN & ELEVATION
STRUCTURE NO. 032-0115**



DESIGNED - MWM
CHECKED - JSD
DRAWN - MWM
CHECKED - JSD

PILE DATA
Type: HP 14 x 89
Nominal Required Bearing: 378 K
Factored Resistance Available: 189 K
Est. Length: 31 ft
No. Production Piles: 26
No. Test Piles: 1

LOCHNER
H.W. LOCHNER, INC.
CONSULTING ENGINEERS & PLANNERS
20 NORTH WACKER DRIVE SUITE 1200
CHICAGO, IL 60606

SHEET NO. 22 OF 31 SHEETS	RTE.	SECTION	COUNTY	TOTAL SHEETS	SHEET NO.
	*	(32, 47-4) HBK-4 & (G)N	GRUNDY	351	304
CONTRACT NO. 66408					
FED. ROAD DIST. NO. ILLINOIS FED. AID PROJECT					

* FAI 80 & FAS 297 / FAU 392

T:\2608-bris\struct\dgn\0320058-66408-022-NA01.dgn