

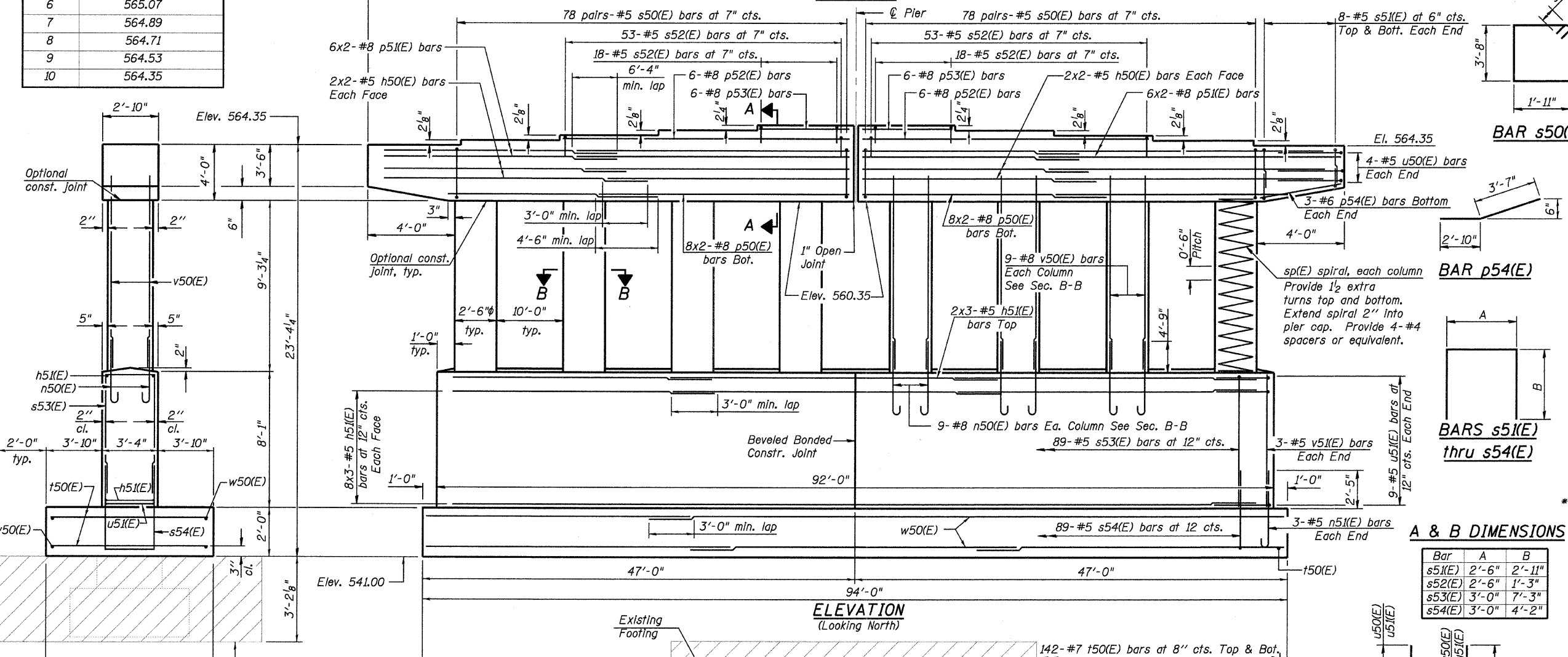
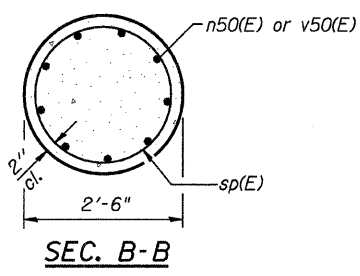
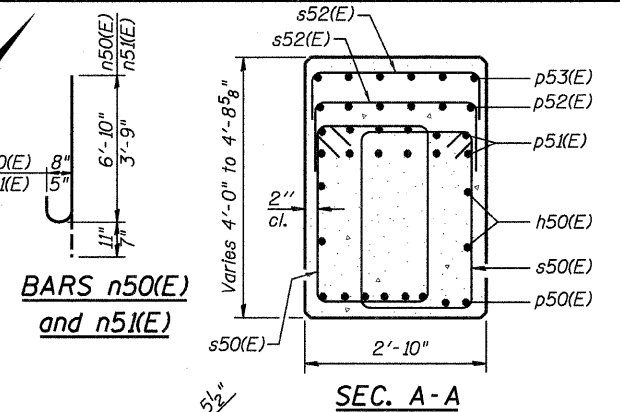
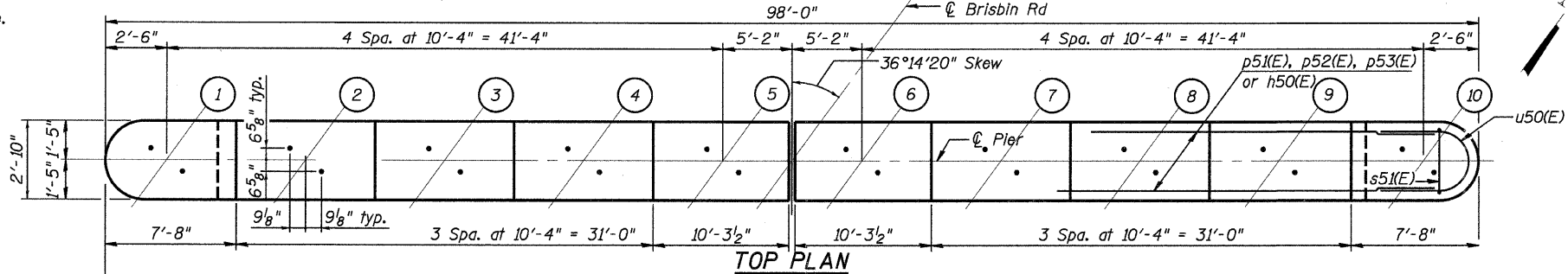
STATE OF ILLINOIS
DEPARTMENT OF TRANSPORTATION

- Notes
1. Space reinforcement in cap to miss anchor bolts.
2. Pour steps monolithically with cap.
3. Bars Indicated thus 12x3-#5 etc.
Indicates 12 lines of bars with 3 lengths per line.

4. Sealer shall be applied to all exposed above ground surfaces of the crashwall, columns and pier cap, including the beam seats.

BEARING SEAT ELEVATIONS

Beam	Seat Elevation
1	564.35
2	564.53
3	564.71
4	564.89
5	565.07
6	565.07
7	564.89
8	564.71
9	564.53
10	564.35

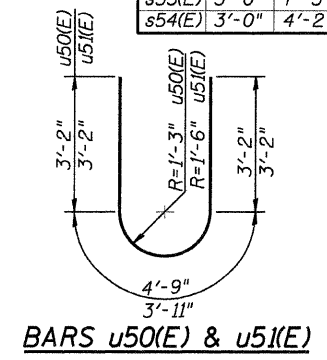


BILL OF MATERIAL

Bar	No.	Size	Length	Shape
h50(E)	16	#5	25'-3"	—
h51(E)	54	#5	32'-7"	—
n50(E)	72	#8	7'-9"	U
n51(E)	6	#5	4'-4"	U
p50(E)	32	#8	24'-10"	—
p51(E)	48	#8	27'-6"	—
p52(E)	12	#8	30'-7"	—
p53(E)	12	#8	9'-11"	—
p54(E)	6	#6	6'-5"	—
s50(E)	312	#5	12'-1"	□
s51(E)	32	#5	8'-4"	□
s52(E)	142	#5	5'-0"	□
s53(E)	89	#5	17'-6"	□
s54(E)	89	#5	11'-4"	□
sp(E)	8	#4	9'-6"	~
t50(E)	284	#7	10'-8"	U
u50(E)	8	#5	10'-3"	—
u51(E)	18	#5	11'-1"	—
v50(E)	72	#8	11'-10"	—
v51(E)	6	#5	7'-9"	—
w50(E)	72	#5	33'-3"	—
Braced Excavation		Cu. Yd.	395	
Concrete Sealer		Sq. Ft.	2,457	
Concrete Structures		Cu. Yd.	227.5	
Reinforcement Bars, Epoxy Coated		Pound	33,390	

A & B DIMENSIONS

Bar	A	B
s51(E)	2'-6"	2'-11"
s52(E)	2'-6"	1'-3"
s53(E)	3'-0"	7'-3"
s54(E)	3'-0"	4'-2"



LEGEND

Pay Limits of Granular Subbase and additional Braced Excavation for removal of existing pier & footing

DESIGNED - CMM
CHECKED - JSD
DRAWN - GJS
CHECKED - JSD

Allowable Bearing Pressure 7.0 ksf

LOCHNER
H.W. LOCHNER, INC.
CONSULTING ENGINEERS & PLANNERS
20 NORTH WACKER DRIVE SUITE 1200
CHICAGO, IL 60606

SHEET NO.	RTE.	SECTION	COUNTY	TOTAL SHEETS	SHEET NO.
27 OF 31 SHEETS	*	(32, 47-4) HBK-4 & (G)N	GRUNDY	351	309
FED. ROAD DIST. NO.			ILLINOIS FED. AID PROJECT		
* FAI 80 & FAS 297 / FAU 392					

PIER
STRUCTURE NO. 032-0115

FOOTING PLAN

T:\2608-bris\struct\dgn\0320058-66408-027-PI01.dgn