

GENERAL NOTES

1. Reinforcement bars shall conform to the requirements of ASTM A 706 Gr 60. See Special Provisions.
2. Reinforcement bars designated (E) shall be epoxy coated.
3. Layout of the slope protection system may be varied to suit ground conditions in the field as directed by the Engineer.
4. The embankment configuration shown shall be the minimum that must be placed and compacted prior to construction of the abutments.
5. The Contractor shall drive test piles to 110% of the nominal required bearing specified in production locations at substructures specified or approved by the Engineer before ordering the remainder of piles.
6. Slip forming of the parapets is not allowed.

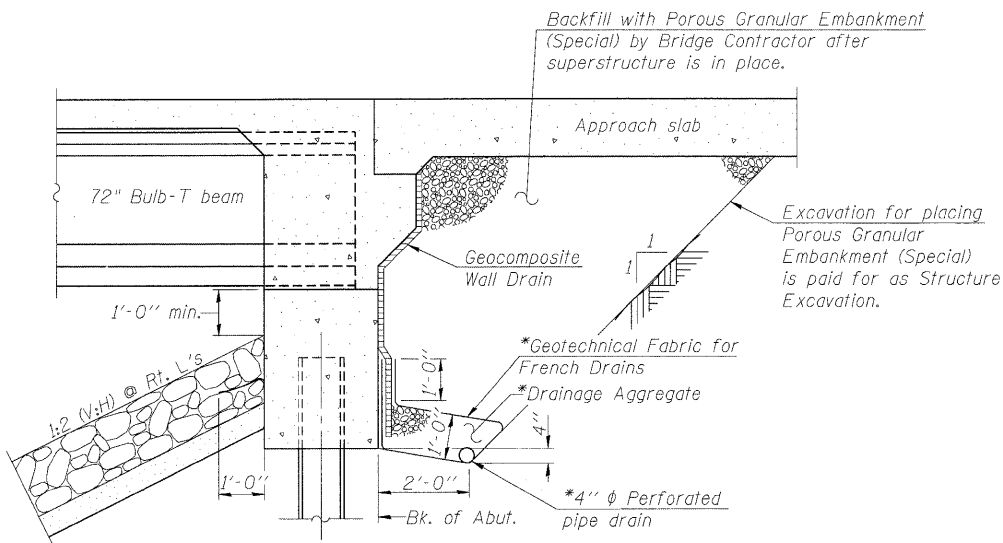
STATE OF ILLINOIS
DEPARTMENT OF TRANSPORTATION

TOTAL BILL OF MATERIAL

ITEM	UNIT	SUPER	SUB	TOTAL
Porous Granular Embankment, Special	Cu. Yd.		228	228
Stone Riprap, Class A4	Sq. Yd.		1,261	1,261
Filter Fabric	Sq. Yd.		1,430	1,430
Structure Excavation	Cu. Yd.		3	3
Concrete Structures	Cu. Yd.		59.2	59.2
Concrete Superstructure	Cu. Yd.	247.3		247.3
Bridge Deck Grooving	Sq. Yd.	477		477
Concrete Encasement	Cu. Yd.		5.0	5.0
Protective Coat	Sq. Yd.	621		621
Furnishing and Erecting Precast Prestressed Concrete Bulb T-Beams, 72"	Foot	661		661
Reinforcement Bars, Epoxy Coated	Pound	48,610	9,780	58,390
Bar Splicers	Each	54		54
Furnishing Steel Piles HP12X63	Foot		246	246
Driving Piles	Foot		246	246
Test Pile Steel HP12X63	Each		2	2
Pile Shoes	Each		14	14
Name Plates	Each	1		1
Geocomposite Wall Drain	Sq. Yd.		106	106
Pipe Underdrain for Structures 4"	Foot		110	110
Conduit Embedded in Structure, 2" Dia., PVC	Foot	112		

INDEX OF SHEETS

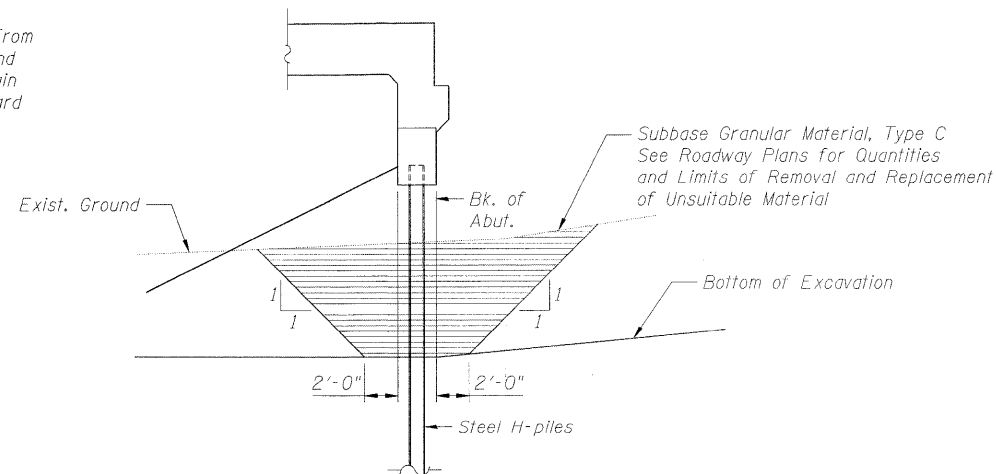
SHEET NO.	TITLE
1	GENERAL PLAN & ELEVATION
2	GENERAL NOTES, INDEX OF SHEETS & BILL OF MATERIAL
3	TOP OF SLAB ELEVATION PLAN
4	TOP OF SLAB ELEVATIONS
5	TOP OF APPROACH SLAB ELEVATIONS
6	DECK PLAN & CROSS SECTION
7	DIAPHRAGM DETAILS
8	SUPERSTRUCTURE DETAILS
9	BRIDGE APPROACH SLAB DETAILS I
10	BRIDGE APPROACH SLAB DETAILS II
11	FRAMING PLAN & DETAILS
12	72" PPC BULB T-BEAM
13	72" PPC BULB T-BEAM DETAILS
14	WEST ABUTMENT PLAN & ELEVATION
15	EAST ABUTMENT PLAN & ELEVATION
16	HP PILE DETAILS
17	BAR SPLICER ASSEMBLY DETAILS
18	SOIL BORING LOGS I
19	SOIL BORING LOGS II



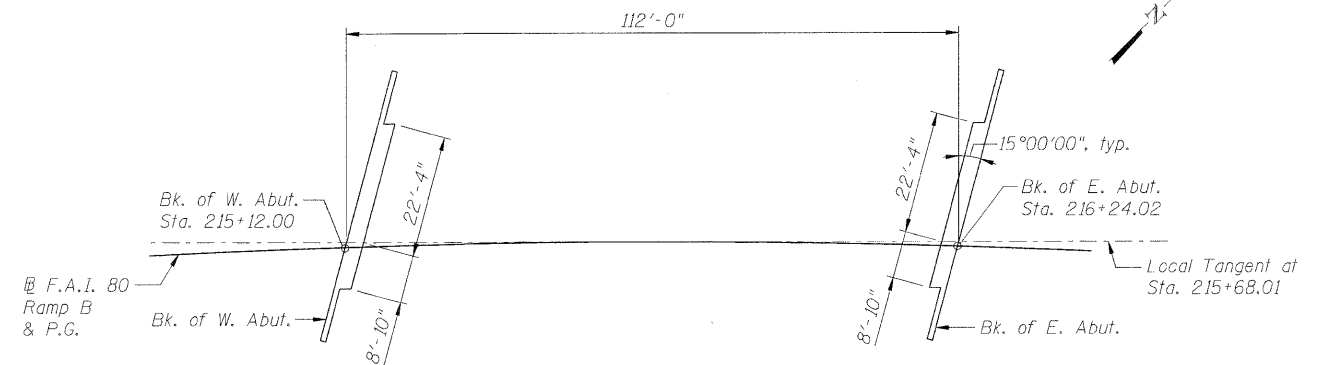
ABUTMENT DRAINAGE DETAIL
(Horiz. dim. @ Rt. L's)

*Included in the cost of Pipe Underdrains for Structures 4".

Note:
All drainage system components shall extend to 2'-0" from the end of each wingwall except an outlet pipe shall extend until intersecting with the side slopes. The pipes shall drain into concrete headwalls. (See Article 601.05 of the Standard Specifications and Highway Standard 601101).



SECTION THRU ABUTMENT



FOOTING LAYOUT

GENERAL NOTES, INDEX OF SHEETS & BILL OF MATERIAL
STRUCTURE NO. 032-0117

DESIGNED - LJB
CHECKED - CMM
DRAWN - GJS
CHECKED - CMM

LOCHNER

H.W. LOCHNER, INC.
CONSULTING ENGINEERS & PLANNERS
20 NORTH WACKER DRIVE SUITE 1200
CHICAGO, IL 60606

SHEET NO. 2 OF 19 SHEETS	RTE.	SECTION	COUNTY	TOTAL SHEETS	SHEET NO.
	*	(32,47-4) HBK-4 & G(N)	GRUNDY	351	315
CONTRACT NO. 66408					
FED. ROAD DIST. NO.		ILLINOIS	FED. AID PROJECT		

* FAI 80 & FAS 297 / FAU 392

t:\1812\struct\dgn\0320117-66408-002-GN01.dgn