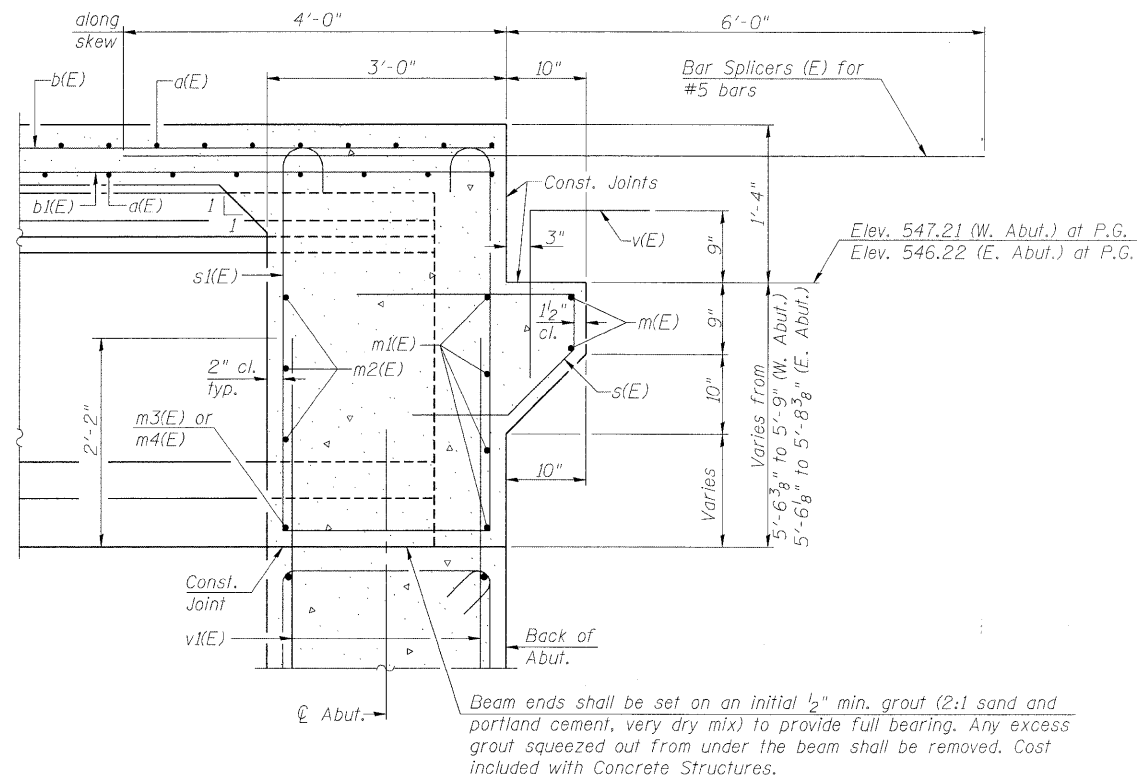


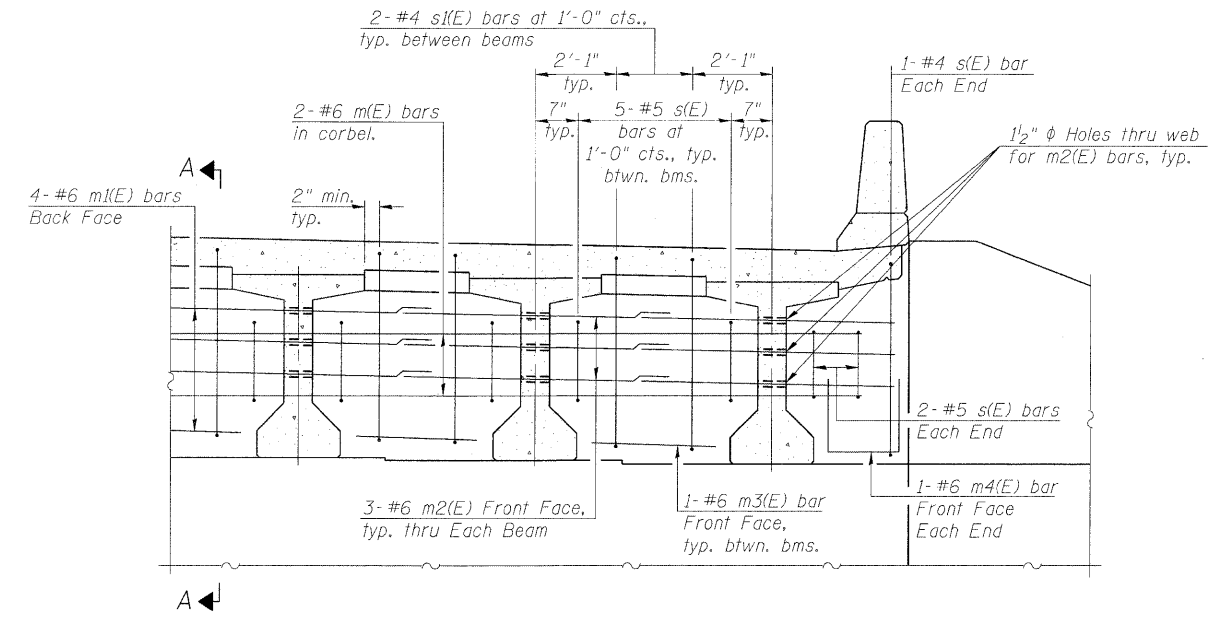
STATE OF ILLINOIS
DEPARTMENT OF TRANSPORTATION



SECTION A-A

Dimensions at right angles to abutment, except as shown.

- Notes:
- Reinforcement bars in diaphragm are billed with superstructure on sheet 8.
 - Concrete in diaphragm is included with Concrete Superstructure on sheet 8.
 - For details of bars s(E) and s1(E) see sheet 8.
 - The s(E) and s1(E) bars shall be placed parallel to the beams.
 - Spacing for these bars shall be at right angles to the beams.



DIAPHRAGM ELEVATION AT ABUTMENT

MIN. BAR LAP

#6 bar = 2'-9"

t:\1812\struct\dgn\0320117-66408-007-DD01.dgn

DESIGNED - LJB
CHECKED - CMM
DRAWN - GJS
CHECKED - CMM

DIAPHRAGM DETAILS
STRUCTURE NO. 032-0117

LOCHNER

H.W. LOCHNER, INC.
CONSULTING ENGINEERS & PLANNERS
20 NORTH WACKER DRIVE SUITE 1200
CHICAGO, IL 60606

SHEET NO. 7 OF 19 SHEETS	RTE.	SECTION	COUNTY	TOTAL SHEETS	SHEET NO.
	*	(32,47-4) HBK-4 & G(N)	GRUNDY	351	320
FED. ROAD DIST. NO.			ILLINOIS FED. AID PROJECT		
CONTRACT NO. 66408					

* FAI 80 & FAS 297 / FAU 392