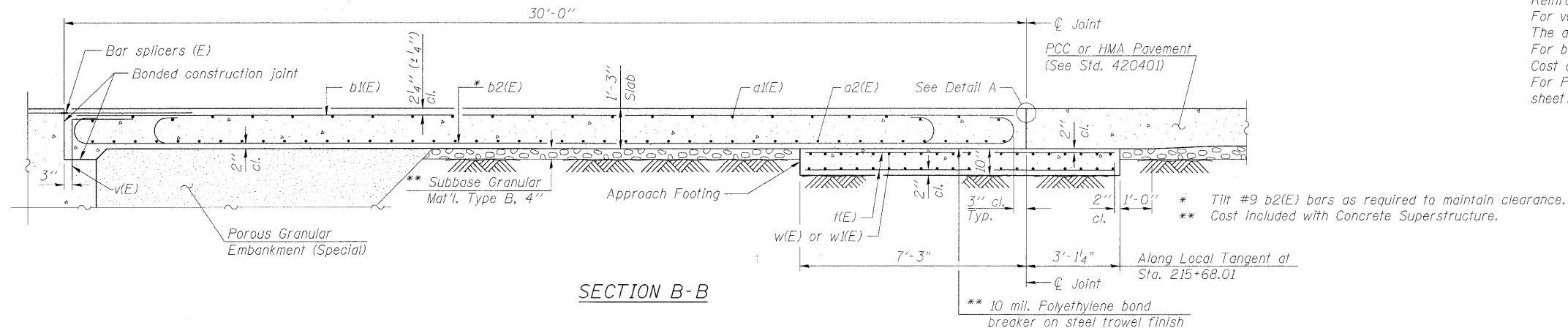


STATE OF ILLINOIS
DEPARTMENT OF TRANSPORTATION

Notes:

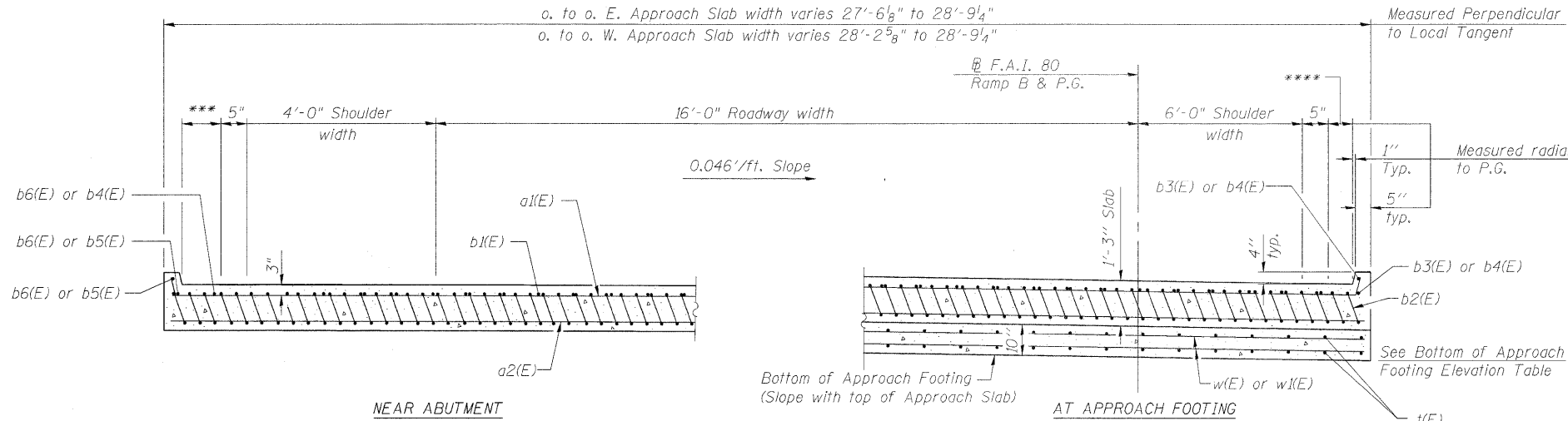
See sheet 9 of 19 for Detail A.
Approach slab and curb concrete shall be paid for as Concrete Superstructure.
Approach footing concrete shall be paid for as Concrete Structures.
Reinforcement shall be paid for as Reinforcement Bars, Epoxy Coated.
For v(E) bar details, see sheet 8 of 19.
The approach footing maximum applied service bearing pressure (Qmax) = 2.0 ksf.
For bar splicer details, see sheet 17 of 19.
Cost of excavation for approach footing included with Concrete Structures.
For Porous Granular Embankment (Special) and drainage treatment details, see sheet 2 of 19.



SECTION B-B

BOTTOM OF APPROACH FOOTING
ELEVATION TABLE

East Approach		West Approach	
Corner Location	Elevation	Corner Location	Elevation
NW	548.28	NW	549.74
NE	548.17	NE	549.66
SE	546.95	SE	548.45
SW	547.04	SW	548.54



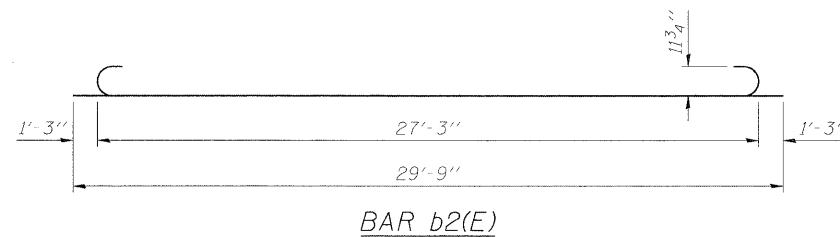
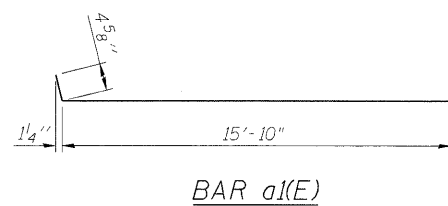
SECTION C-C

(See Plan for dimensions not shown)

TWO APPROACHES
BILL OF MATERIAL

Bar	No.	Size	Length	Shape
a1(E)	100	#4	16'-3"	—
a2(E)	184	#5	15'-10"	—
b1(E)	56	#4	29'-6"	—
b2(E)	144	#9	29'-9"	—
b3(E)	2	#4	29'-3"	—
b4(E)	3	#4	29'-10"	—
b5(E)	2	#4	30'-0"	—
b6(E)	3	#4	28'-11"	—
t(E)	120	#4	10'-0"	—
w(E)	40	#5	28'-1"	—
w1(E)	40	#5	28'-10"	—
Concrete Superstructure		Cu. Yd.	79.5	
Concrete Structures		Cu. Yd.	17.8	
Reinforcement Bars, Epoxy Coated		Pound	23,170	

*** Width varies 0" to 1'-0 5/8" (E. Approach)
Width varies 0" to 8 1/4" (W. Approach)
**** Width varies 0" to 1 3/8" (E. Approach)
Width varies 0" to 0 3/4" (W. Approach)



DESIGNED - BJN
CHECKED - CMM
DRAWN - GJS
CHECKED - CMM

LOCHNER

H.W. LOCHNER, INC.
CONSULTING ENGINEERS & PLANNERS
20 NORTH WACKER DRIVE SUITE 1200
CHICAGO, IL 60606

SHEET NO. 10 OF 19 SHEETS	RTE.	SECTION	COUNTY	TOTAL SHEETS	SHEET NO.
	*	(32,47-4) HBK-4 & G(N)	GRUNDY	351	323
CONTRACT NO. 66408					
FED. ROAD DIST. NO.		ILLINOIS	FED. AID PROJECT		

* FAI 80 & FAS 297 / FAU 392

BRIDGE APPROACH SLAB DETAILS II
STRUCTURE NO. 032-0117