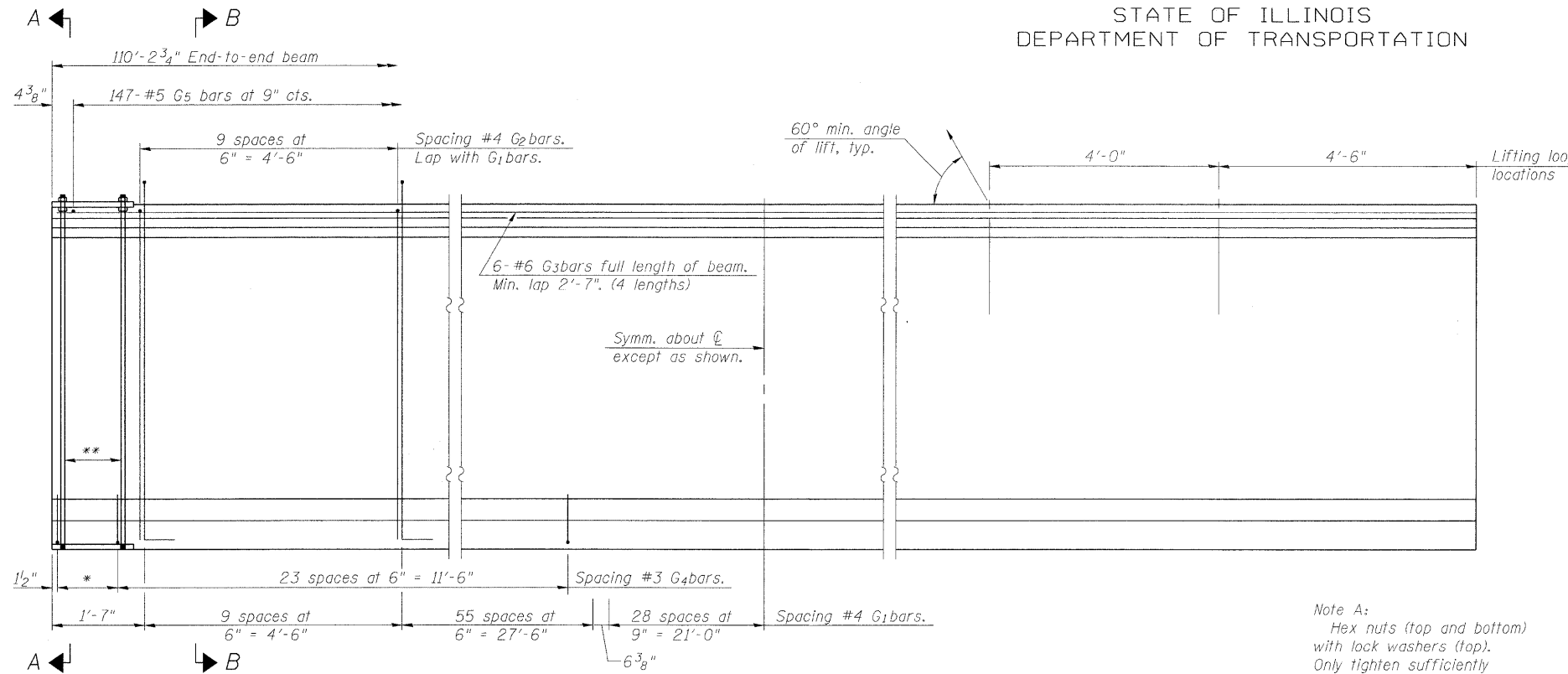


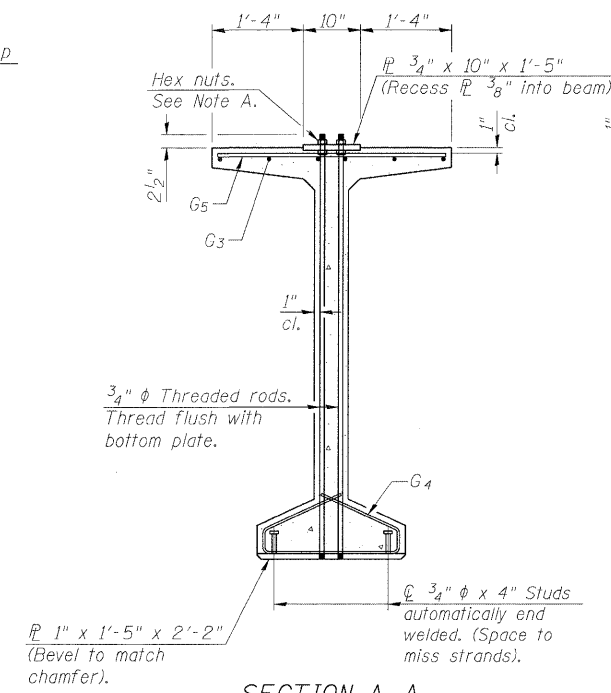
STATE OF ILLINOIS
DEPARTMENT OF TRANSPORTATION



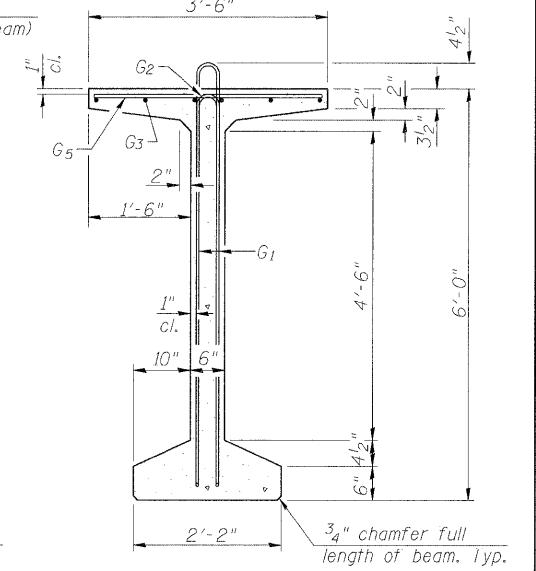
ELEVATION OF BEAM
(Showing reinforcement & dimensions)

* 4 spaces at 3/4" = 1'-1".
** 5-3/4" φ threaded dowel rods at 3/4" cts., each face.

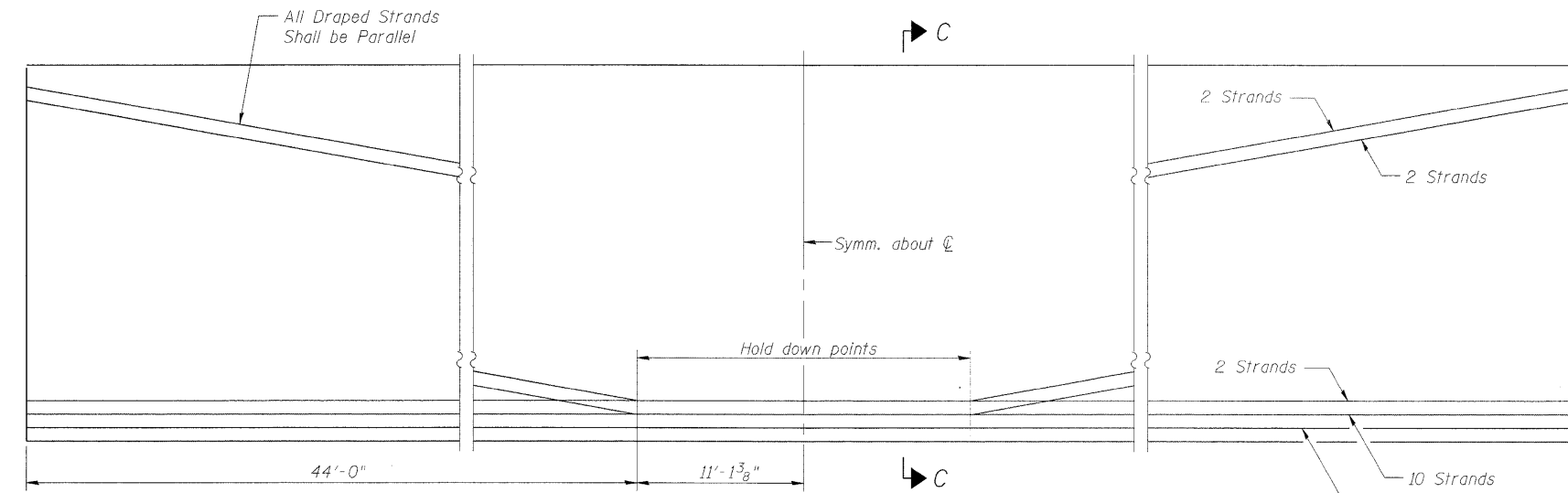
Note A:
Hex nuts (top and bottom) with lock washers (top). Only tighten sufficiently to compress lock washers.



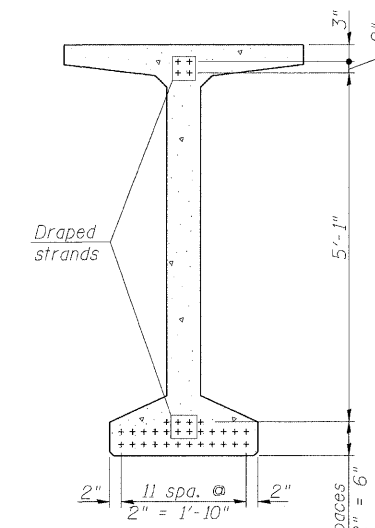
SECTION A-A



SECTION B-B



ELEVATION OF BEAM
(Showing prestressing steel)



SECTION C-C

*****BAR LIST
ONE BEAM ONLY**

Bar	No.	Size	Length	Shape
G ₁	187	#4	13'-5"	∩L
G ₂	20	#4	11'-8"	∩
G ₃	24	#6	29'-6"	—
G ₄	56	#3	4'-11"	∩
G ₅	147	#5	3'-4"	—

***For information only

Notes:
See sheet 13 for additional details and Bill of Material.
Required release strength, f'ci, shall be 5,000 psi.

**72" PPC BULB T-BEAM
STRUCTURE 032-0117**

DESIGNED - LJB
CHECKED - CMM
DRAWN - GJS
CHECKED - CMM

LOCHNER

H.W. LOCHNER, INC.
CONSULTING ENGINEERS & PLANNERS
20 NORTH WACKER DRIVE SUITE 1200
CHICAGO, IL 60606

SHEET NO. 12 OF 19 SHEETS	RTE.	SECTION	COUNTY	TOTAL SHEETS	SHEET NO.
	*	(32,47-4) HBK-4 & G(N)	GRUNDY	351	325
CONTRACT NO. 66408					
FED. ROAD DIST. NO.		ILLINOIS	FED. AID PROJECT		

* FAI 80 & FAS 297 / FAU 392