

GENERAL NOTES

1. Reinforcement bars shall conform to the requirements of ASTM A 706 Gr 60. See Special Provisions.
2. Reinforcement bars designated (E) shall be epoxy coated.
3. Layout of the slope protection system may be varied to suit ground conditions in the field as directed by the Engineer.
4. The embankment configuration shown shall be the minimum that must be placed and compacted prior to construction of the abutments.
5. The Contractor shall drive test piles to 110% of the nominal required bearing specified in production locations at substructures specified or approved by the Engineer before ordering the remainder of piles.
6. Slip forming of the parapets is not allowed.
7. If the Contractor chooses to alter the temporary cantilevered sheet piling design requirements shown on the plans, a design submittal including plan details and calculations will be required for review and acceptance by the Engineer.

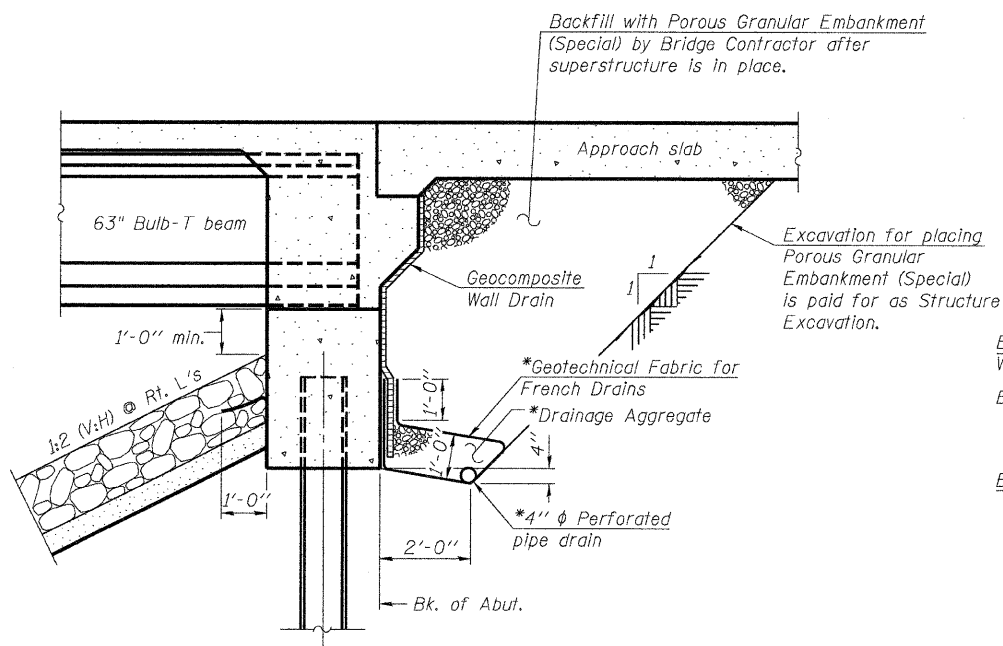
STATE OF ILLINOIS
DEPARTMENT OF TRANSPORTATION

TOTAL BILL OF MATERIAL

ITEM	UNIT	SUPER	SUB	TOTAL
Porous Granular Embankment, Special	Cu. Yd.		180	180
Stone Riprap, Class A4	Sq. Yd.		558	558
Filter Fabric	Sq. Yd.		689	689
Concrete Removal	Cu. Yd.		0.8	0.8
Structure Excavation	Cu. Yd.		10	10
Concrete Structures	Cu. Yd.		52.0	52.0
Concrete Superstructure	Cu. Yd.	235.2		235.2
Bridge Deck Grooving	Sq. Yd.	436		436
Concrete Encasement	Cu. Yd.		4.8	4.8
Protective Coat	Sq. Yd.	597		597
Furnishing and Erecting Precast Prestressed Concrete Bulb T-Beams, 63"	Foot	611		611
Reinforcement Bars, Epoxy Coated	Pound	43,950	8,510	52,460
Bar Splicers	Each	64		64
Furnishing Steel Piles HP12X53	Foot		220	220
Driving Piles	Foot		220	220
Test Pile Steel HP12X53	Each		1	1
Pile Shoes	Each		14	14
Temporary Sheet Piling	Sq. Ft.		1,850	1,850
Name Plates	Each	1		1
Geocomposite Wall Drain	Sq. Yd.		79	79
Pipe Underdrain for Structures 4"	Foot			116
Conduit Embedded in Structure, 2" Dia., PVC	Foot	104		

INDEX OF SHEETS

SHEET NO.	TITLE
1	GENERAL PLAN & ELEVATION
2	GENERAL NOTES, INDEX OF SHEETS & BILL OF MATERIAL
3	TOP OF SLAB ELEVATION PLAN
4	TOP OF SLAB ELEVATIONS
5	TOP OF APPROACH SLAB ELEVATIONS
6	DECK PLAN & CROSS SECTION
7	DIAPHRAGM DETAILS
8	SUPERSTRUCTURE DETAILS
9	BRIDGE APPROACH SLAB DETAILS I
10	BRIDGE APPROACH SLAB DETAILS II
11	FRAMING PLAN & DETAILS
12	63" PPC BULB T-BEAM
13	63" PPC BULB T-BEAM DETAILS
14	WEST ABUTMENT PLAN & ELEVATION
15	EAST ABUTMENT PLAN & ELEVATION
16	HP PILE DETAILS
17	BAR SPLICER ASSEMBLY DETAILS
18	SOIL BORING LOGS I
19	SOIL BORING LOGS II

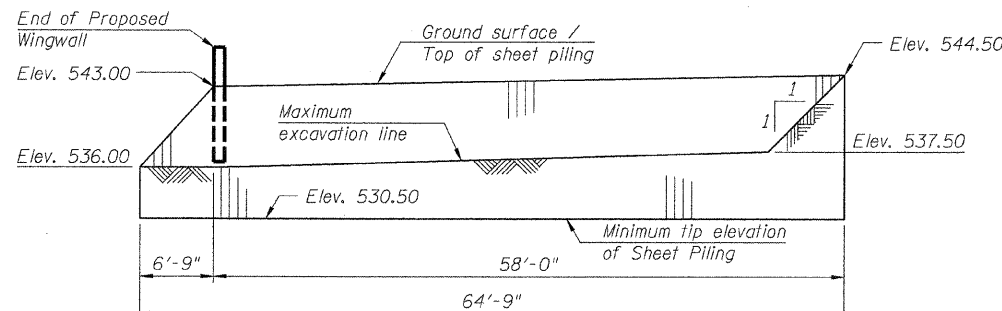


ABUTMENT DRAINAGE DETAIL

(Horiz. dim. @ Rt. L's)

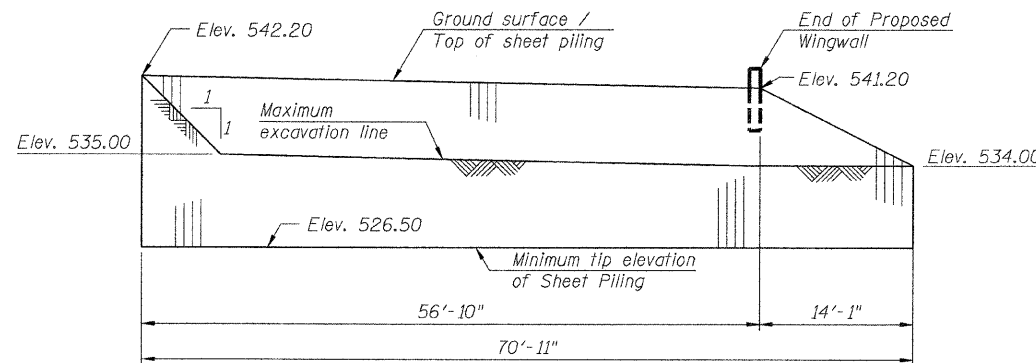
*Included in the cost of Pipe Underdrains for Structures 4".

Note:
All drainage system components shall extend to 2'-0" from the end of each wingwall except an outlet pipe shall extend from the north side until intersecting with the side slopes. The pipes shall drain into concrete headwalls. See drainage plans. (See Article 601.05 of the Standard Specifications and Highway Standard 601101).



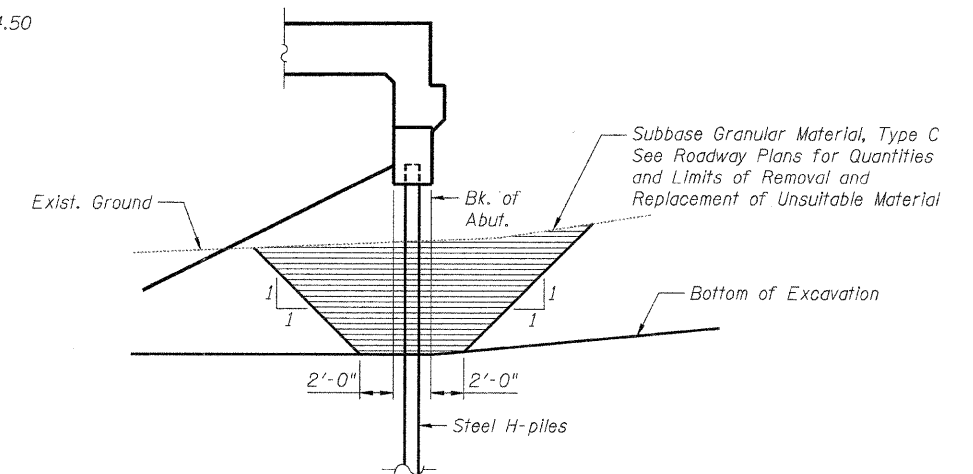
TEMPORARY SHEET PILING

East Abutment - Looking North
See Sheet 1 for plan location of sheeting.



TEMPORARY SHEET PILING

West Abutment - Looking North
See Sheet 1 for plan location of sheeting.



SECTION THRU ABUTMENT

**GENERAL NOTES, INDEX OF SHEETS & BILL OF MATERIAL
STRUCTURE NO. 032-0118**

DESIGNED - LJB
CHECKED - CMM
DRAWN - GJS
CHECKED - CMM

LOCHNER

H.W. LOCHNER, INC.
CONSULTING ENGINEERS & PLANNERS
20 NORTH WACKER DRIVE SUITE 1200
CHICAGO, IL 60606

SHEET NO.	RTE.	SECTION	COUNTY	TOTAL SHEETS	SHEET NO.
2 OF 19 SHEETS	*	(32,47-4) HBK-4 & G(N)	GRUNDY	351	334
CONTRACT NO. 66408					
FED. ROAD DIST. NO.		ILLINOIS FED. AID PROJECT			

* FAI 80 & FAS 297 / FAU 392

T:\1812\Struct\dgn\0320118-66408-002-GN01.dgn