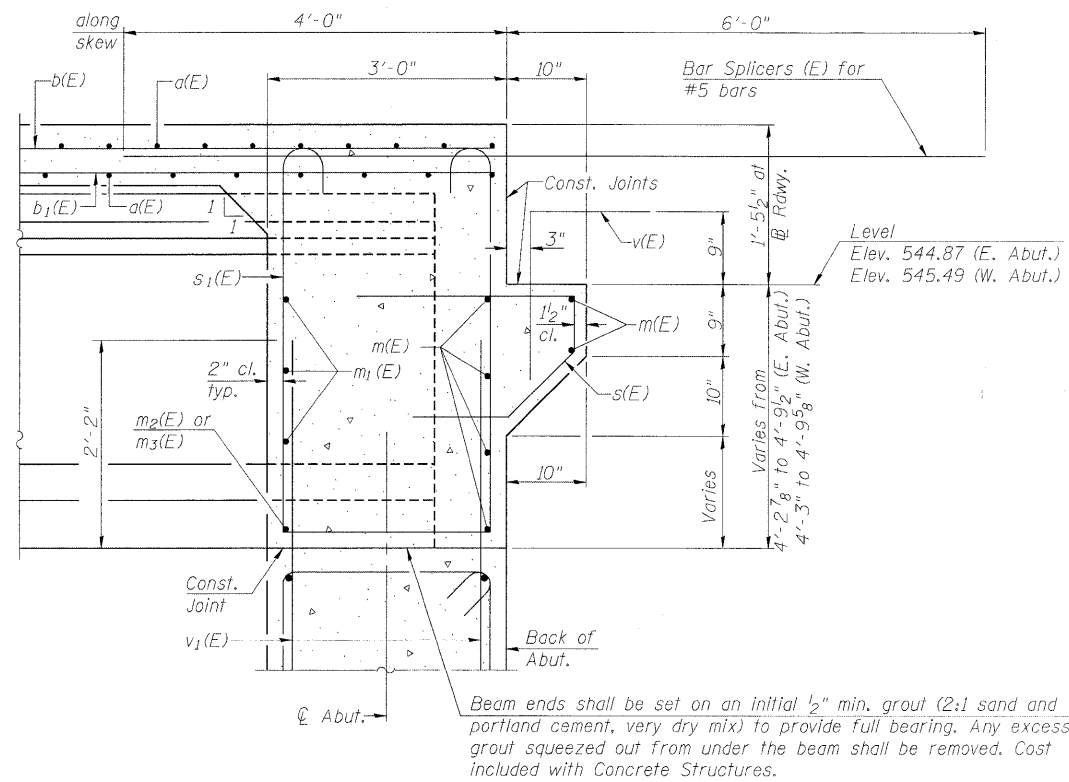


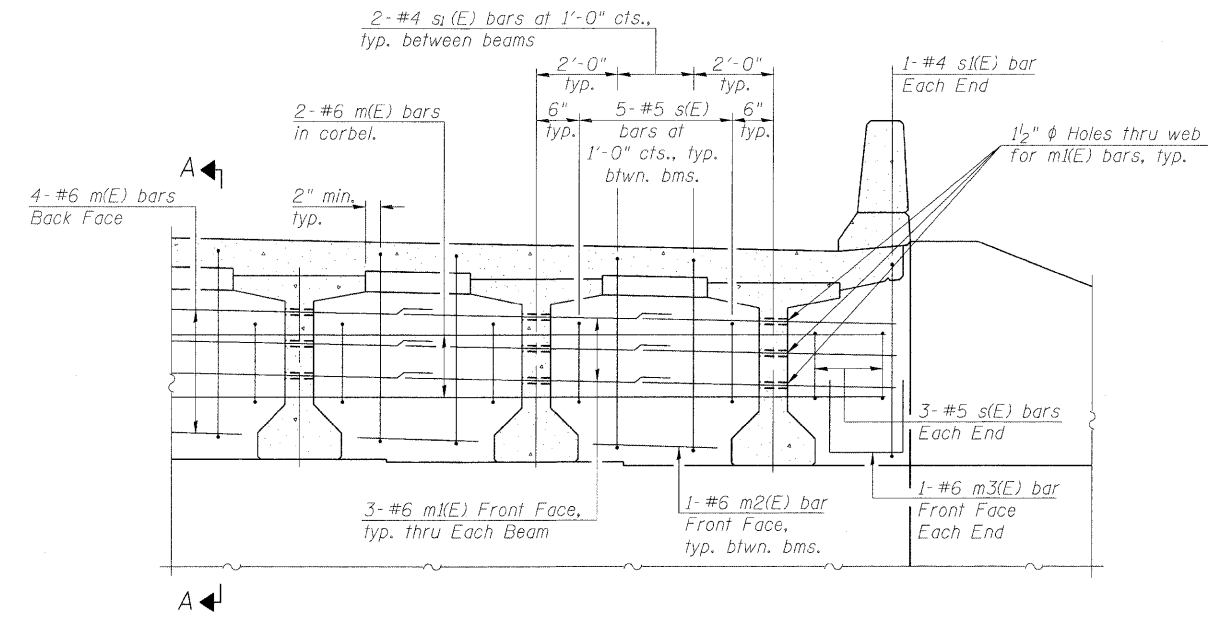
STATE OF ILLINOIS
DEPARTMENT OF TRANSPORTATION



SECTION A-A

Dimensions at right angles to abutment, except as shown.

- Notes:
- Reinforcement bars in diaphragm are billed with superstructure on sheet 8.
 - Concrete in diaphragm is included with Concrete Superstructure on sheet 8.
 - For details of bars s(E) and s1(E) see sheet 8.
 - The s(E) and s1(E) bars shall be placed parallel to the beams.
 - Spacing for these bars shall be at right angles to the beams.



DIAPHRAGM ELEVATION AT ABUTMENT

MIN. BAR LAP

#6 bar = 2'-9"

| |
|----------------|
| DESIGNED - LJB |
| CHECKED - CMM |
| DRAWN - GJS |
| CHECKED - CMM |

LOCHNER

H.W. LOCHNER, INC.
CONSULTING ENGINEERS & PLANNERS
20 NORTH WACKER DRIVE SUITE 1200
CHICAGO, IL 60606

| | | | | | |
|--------------------------------|--------------------|---------------------------|--------|--------------|-----------|
| SHEET NO. 7 OF 19 SHEETS | RTE. | SECTION | COUNTY | TOTAL SHEETS | SHEET NO. |
| | * | (32,47-4) HBK-4 & G(N) | GRUNDY | 351 | 339 |
| | CONTRACT NO. 66408 | | | | |
| FED. ROAD DIST. NO. | | ILLINOIS FED. AID PROJECT | | | |

* FAI 80 & FAS 297 / FAU 392

DIAPHRAGM DETAILS
STRUCTURE NO. 032-0118