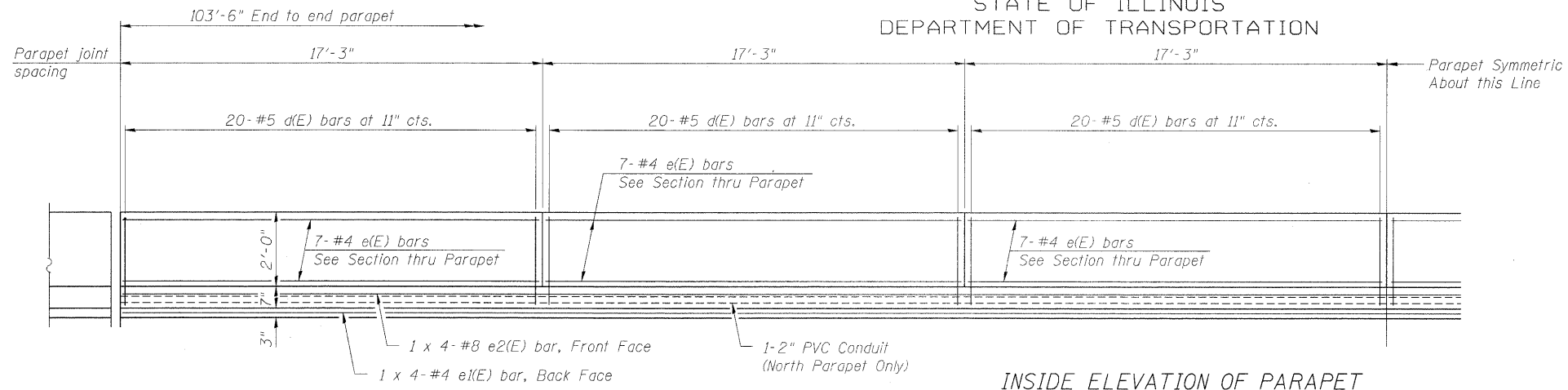
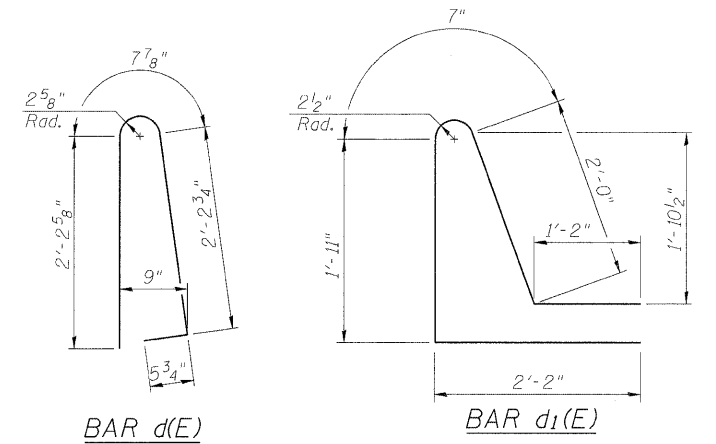


STATE OF ILLINOIS
DEPARTMENT OF TRANSPORTATION

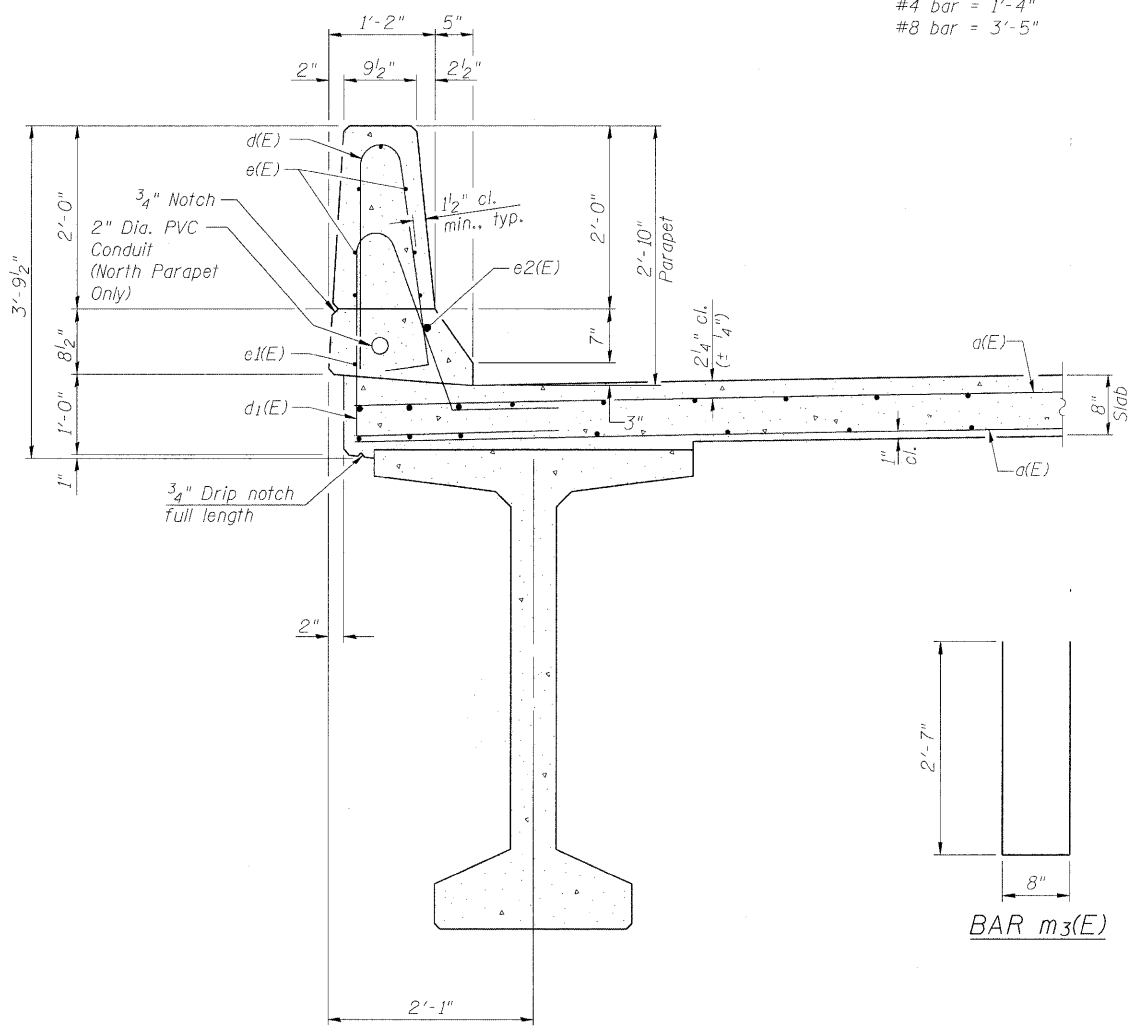


INSIDE ELEVATION OF PARAPET

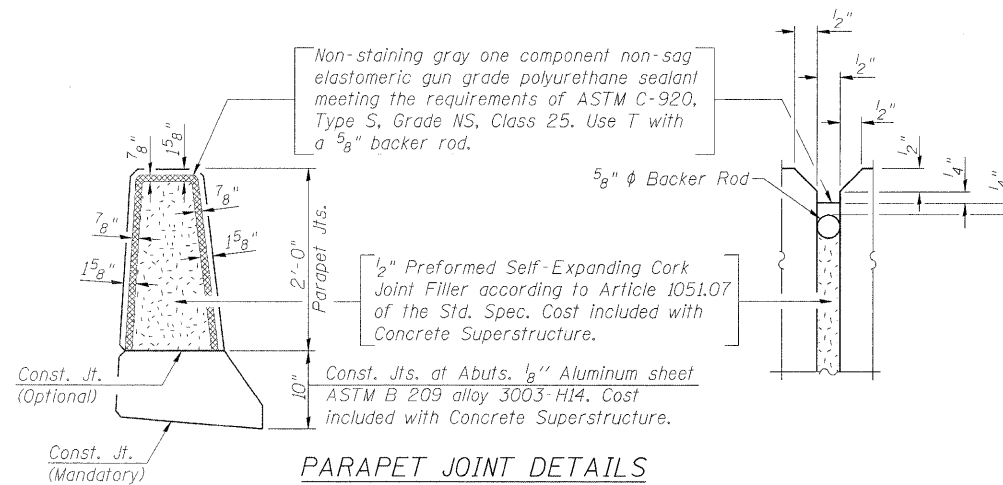


MINIMUM BAR LAP

(Parapet)
#4 bar = 1'-4"
#8 bar = 3'-5"



SECTION THRU PARAPET

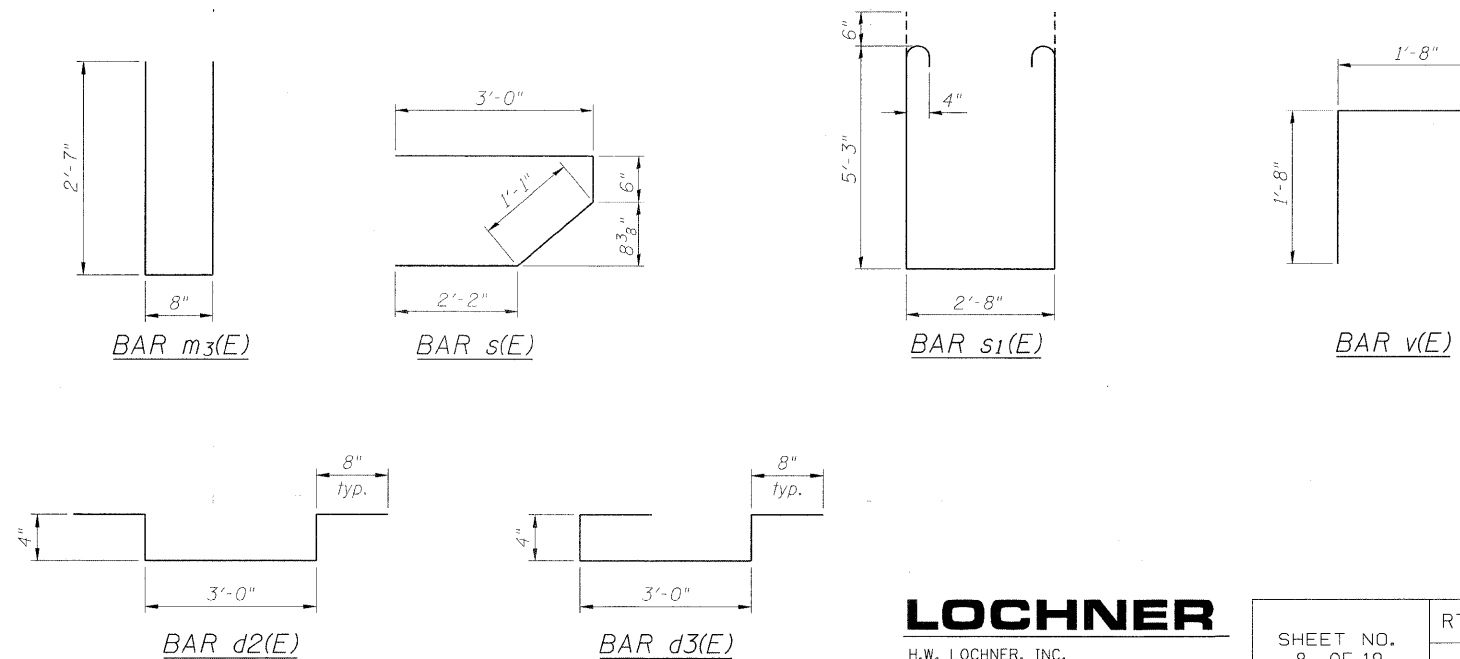


PARAPET JOINT DETAILS

SUPERSTRUCTURE
BILL OF MATERIAL

Bar	No.	Size	Length	Shape	
a(E)	303	#5	28'-6"	—	
a1(E)	4	#5	28'-11"	—	
b(E)	128	#5	28'-3"	—	
b1(E)	130	#5	23'-3"	—	
b2(E)	24	#4	8'-0"	—	
d(E)	240	#5	5'-7"	⌋	
d1(E)	228	#5	7'-10"	⌋	
d2(E)	80	#4	5'-0"	⌋	
d3(E)	40	#4	5'-0"	⌋	
e(E)	84	#4	16'-11"	—	
e1(E)	8	#4	26'-10"	—	
e2(E)	8	#8	28'-5"	—	
m(E)	12	#6	29'-3"	—	
m1(E)	36	#6	7'-10"	—	
m2(E)	10	#6	2'-6"	—	
m3(E)	4	#6	5'-10"	⌋	
s(E)	62	#5	6'-9"	⌋	
s1(E)	24	#4	14'-2"	⌋	
v(E)	60	#5	3'-4"	⌋	
Reinforcement Bars, Epoxy Coated				Pound	23,440
Concrete Superstructure				Cu. Yds.	142.9

Bars indicated thus 1 x 3-#5 etc. indicates 1 line of bars with 3 lengths per line.



SUPERSTRUCTURE DETAILS
STRUCTURE NO. 032-0118

DESIGNED - LJB
CHECKED - CMM
DRAWN - GJS
CHECKED - CMM

LOCHNER

H.W. LOCHNER, INC.
CONSULTING ENGINEERS & PLANNERS
20 NORTH WACKER DRIVE SUITE 1200
CHICAGO, IL 60606

SHEET NO. 8 OF 19 SHEETS	RTE.	SECTION	COUNTY	TOTAL SHEETS	SHEET NO.
	*	(32,47-4) HBK-4 & C(N)	GRUNDY	351	340
	CONTRACT NO. 66408				
FED. ROAD DIST. NO.		ILLINOIS FED. AID PROJECT			

* FAI 80 & FAS 297 / FAU 392