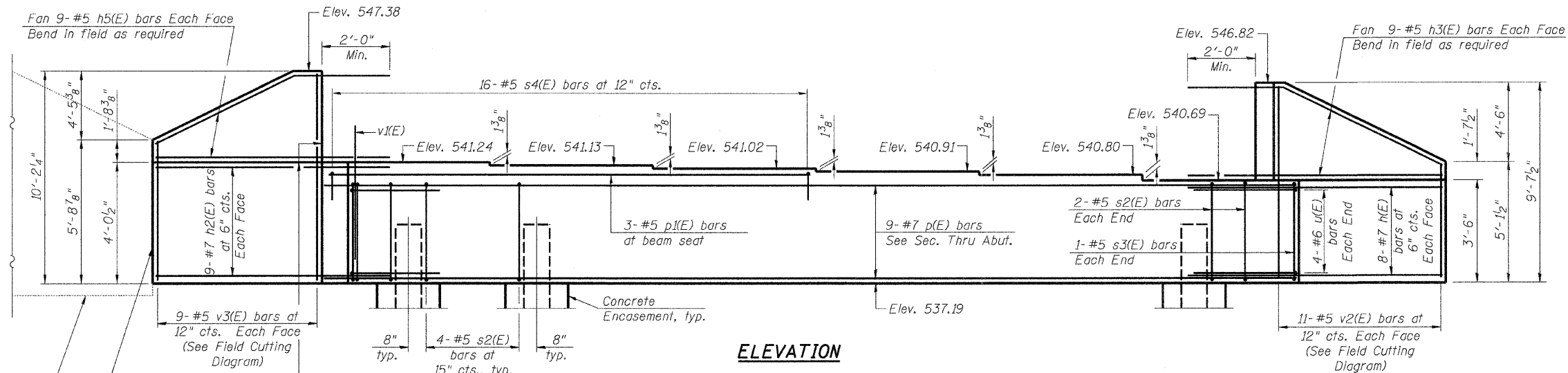


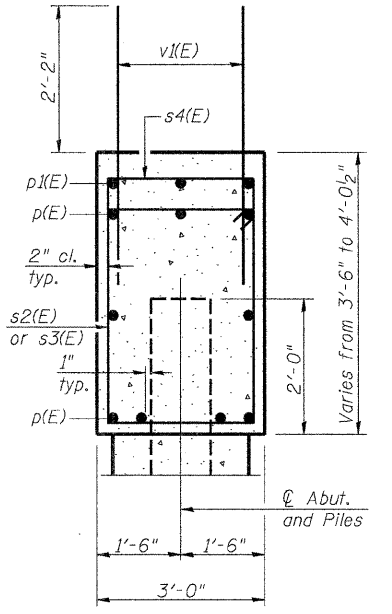
STATE OF ILLINOIS  
DEPARTMENT OF TRANSPORTATION

Notes:  
Pour steps monolithically with cap.

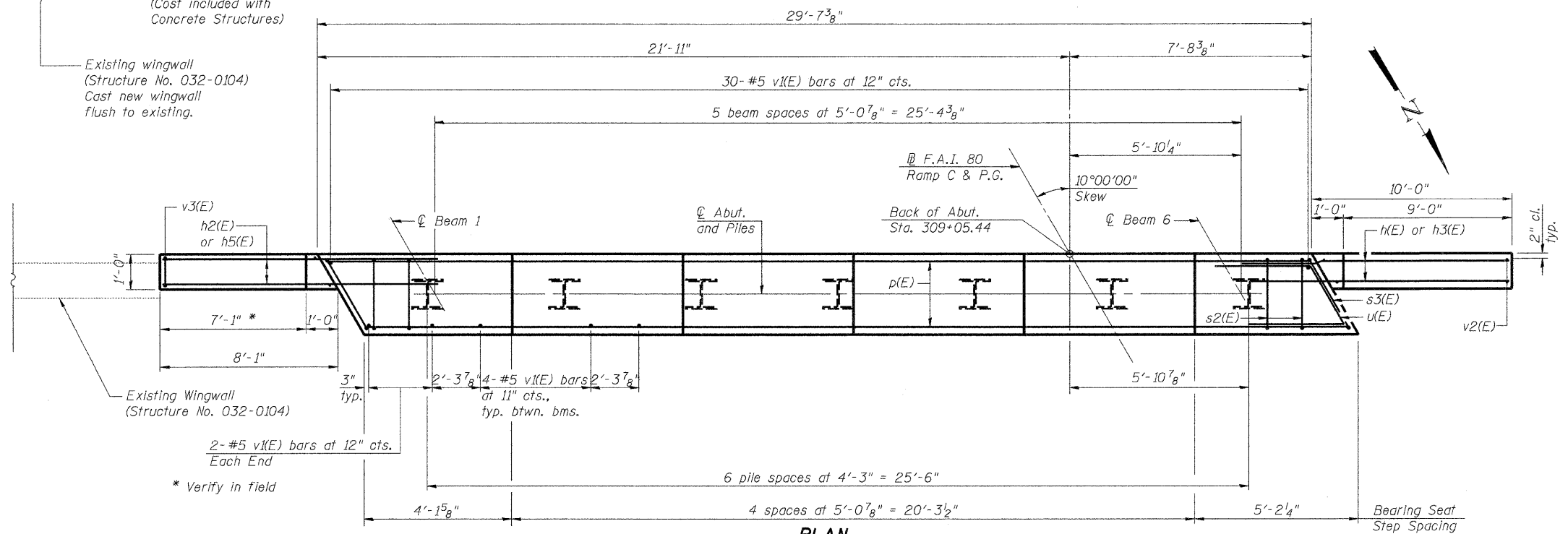
Fan 9-#5 h5(E) bars Each Face  
Bend in field as required



ELEVATION



SEC. THRU ABUT.



PLAN

BILL OF MATERIAL

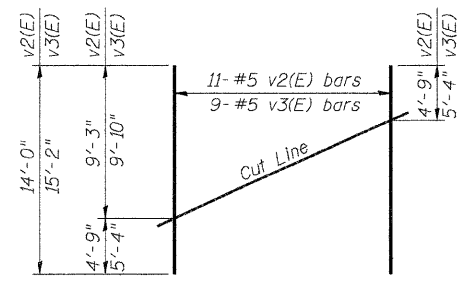
Bar	No.	Size	Length	Shape
h(E)	16	#7	12'-0"	—
h2(E)	18	#7	10'-1"	—
h3(E)	18	#5	13'-1"	—
h5(E)	18	#5	11'-4"	—
p(E)	9	#7	29'-3"	—
p1(E)	3	#5	14'-2"	—
s2(E)	28	#5	12'-7"	□
s3(E)	2	#5	12'-9"	□
s4(E)	16	#5	8'-0"	□
u(E)	8	#6	9'-11"	└
v1(E)	54	#5	4'-4"	—
v2(E)	11	#5	14'-0"	—
v3(E)	9	#5	15'-2"	—
Structure Excavation			Cu. Yd.	2
Concrete Structures			Cu. Yd.	17.6
Reinforcement Bars, Epoxy Coated			Pound	3,000
Furnishing Steel Piles HP12x53			Foot	108
Driving Piles			Foot	108
Test Pile Steel HP12x53			Each	1
Pile Shoes			Each	7
Concrete Encasement			Cu. Yd.	2.4

For details of Bar Splicers, see sheet 17 of 19.  
For details of piles and Concrete Encasement, see sheet 16 of 19.

PILE DATA

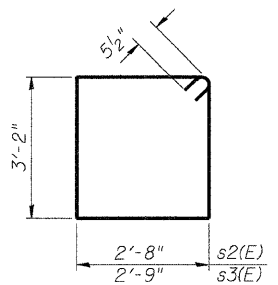
Type: Steel HP12x53 with Pile Shoes  
Nominal Required Bearing: 419 kips  
Factored Resistance Available: 210 kips  
Est. Length: 18 ft  
No. Production Piles: 6  
No. Test Piles: 1

DESIGNED - B J N
CHECKED - C M M
DRAWN - G J S
CHECKED - C M M

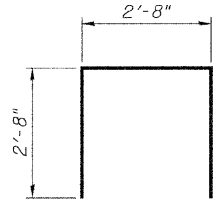


FIELD CUTTING DIAGRAM

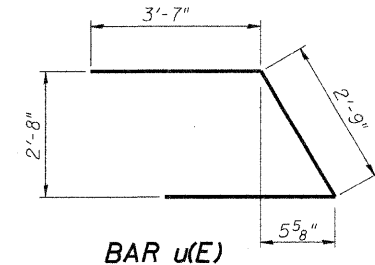
Order v2(E) and v3(E) full length. Cut as shown and use remainder of bars in opposite face.



BARS s2(E) & s3(E)



BAR s4(E)



BAR u(E)

**LOCHNER**  
H.W. LOCHNER, INC.  
CONSULTING ENGINEERS & PLANNERS  
20 NORTH WACKER DRIVE SUITE 1200  
CHICAGO, IL 60606

SHEET NO. 14 OF 19 SHEETS	RTE.	SECTION	COUNTY	TOTAL SHEETS	SHEET NO.
	*	(32,47-4) HBK-4 & G(N)	GRUNDY	351	346
			CONTRACT NO. 66408		
FED. ROAD DIST. NO.		ILLINOIS FED. AID PROJECT			

\* FAI 80 & FAS 297 / FAU 392

WEST ABUTMENT PLAN & ELEVATION  
STRUCTURE NO. 032-0118

T:\812\STRUCT\dgn\032018-66408-014-WA01.dgn