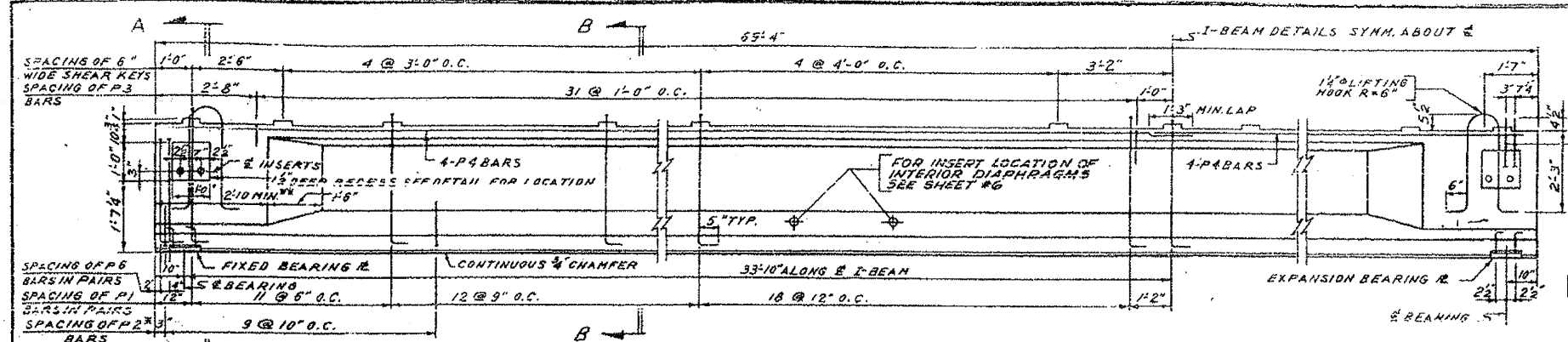
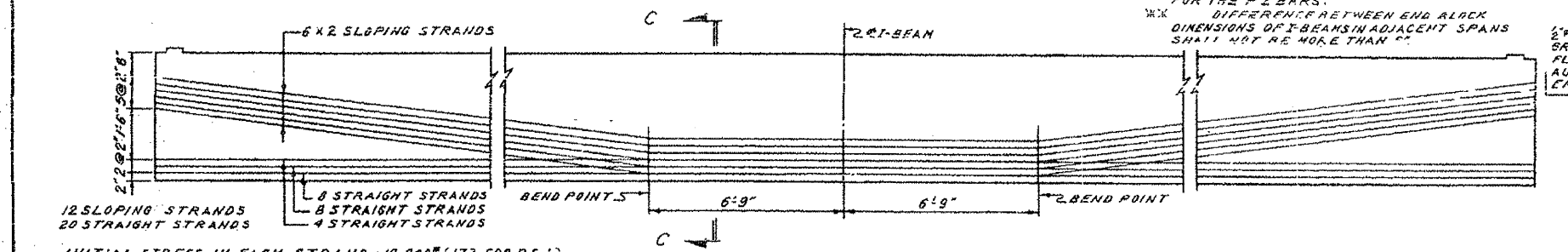


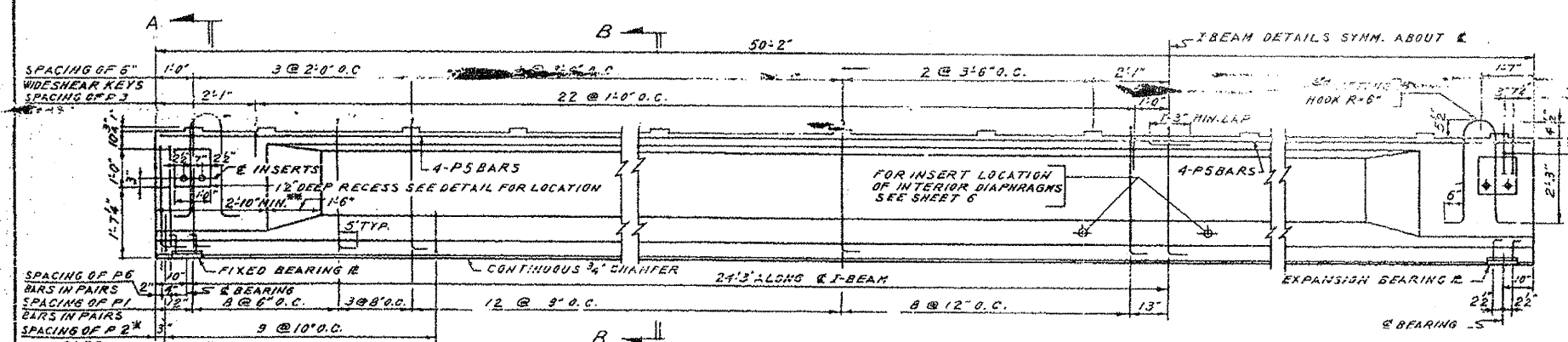
PROJECT NO.	3247-4	SECTION	BRIDGE
DATE	10/24/53	DESIGNER	ALFRED BENECH & ASSOCIATES
SCALE	1/2" = 1'-0"	CHECKED	W. MENDALL
SHEET NO.	262	TOTAL SHEETS	146



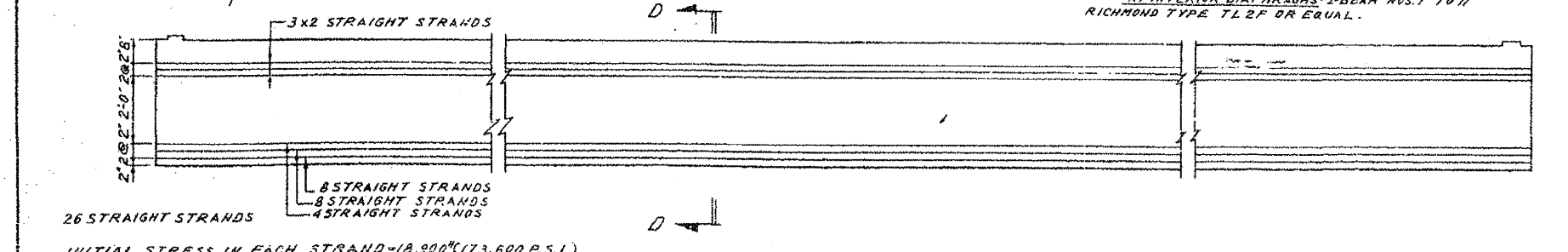
ELEVATION OF 67'-8" SPAN I-BEAMS
SCALE 1/2" = 1'-0"



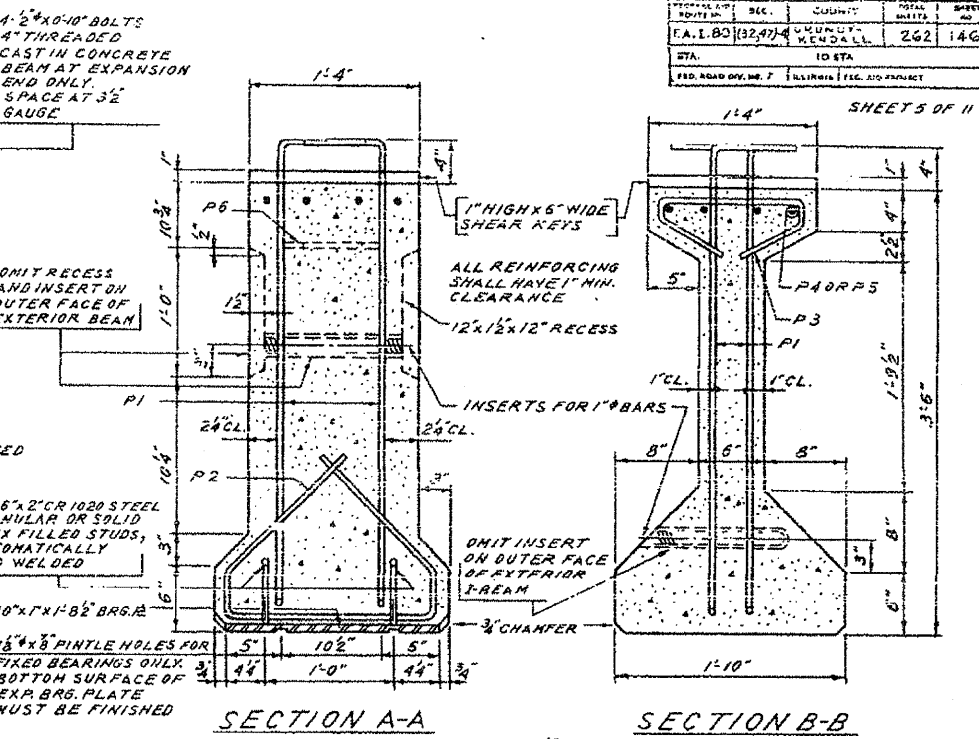
DETAILS OF PRESTRESSING STEEL FOR 67'-8" SPAN I-BEAMS



ELEVATION OF 48'-6" SPAN I-BEAMS
SCALE 1/2" = 1'-0"

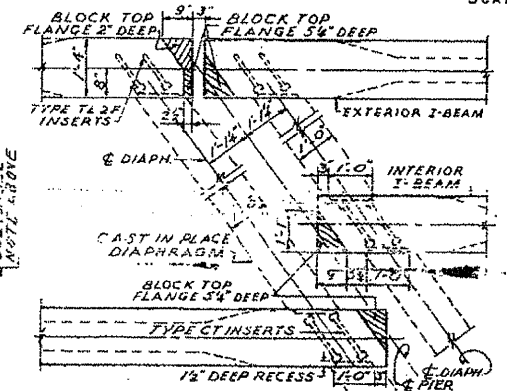


DETAILS OF PRESTRESSING STEEL FOR 48'-6" SPAN I-BEAMS

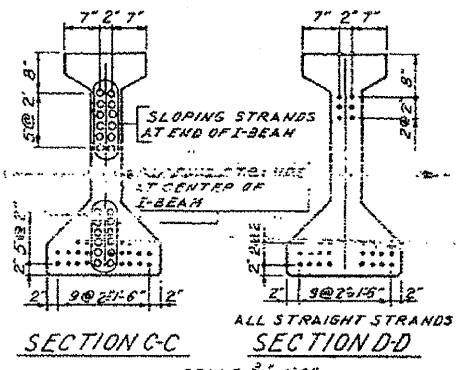


SECTION A-A

SECTION B-B



DETAILS AT ENDS OF I-BEAMS AND BEARING DIAPHRAGM LOCATION (FOR INTERIOR DIAPHRAGM LOCATION SEE SHT. 6)



SECTION C-C

SECTION D-D

NOTES

PRECAST PRESTRESSED CONCRETE I-BEAMS ARE DESIGNED IN ACCORDANCE WITH THE A.A.S.H.O. STANDARD SPECIFICATIONS FOR HIGHWAY BRIDGES, 1953, AND THE CRITERIA FOR PRESTRESSED CONCRETE BRIDGES, 1954, OF THE BUREAU OF PUBLIC ROADS. PRESTRESSING STRANDS SHALL CONSIST OF SPLICED SEVEN-WIRE STRANDS WHICH HAVE A NOMINAL DIAMETER OF 7/8" AND A CROSS-SECTIONAL AREA OF 0.089 SQUARE INCHES. ALL REINFORCING STEEL, PRESTRESSING STRANDS, LIFTING HOOKS, INSERTS, BEARING PLATES AND OTHER ITEMS WHICH ARE CAST INTO THE PRECAST CONCRETE BEAMS SHALL BE INCLUDED IN THE CONTRACT UNIT PRICE PER LINEAL FOOT FOR TRANSPORTING AND ERECTING PRECAST PRESTRESSED CONCRETE I-BEAMS. PRESTRESSED CONCRETE I-BEAMS SHALL BE LIFTED ONLY BY THE LIFTING HOOKS PROVIDED IN THE TOP FLANGES AT THE ENDS OF THE BEAMS. SEE SPECIAL PROVISIONS FOR ADDITIONAL INFORMATION REGARDING MATERIALS, PRESTRESSING EQUIPMENT AND OPERATIONS, CONSTRUCTION AND HANDLING METHODS, AND OTHER REQUIREMENTS FOR THE PRECAST PRESTRESSED CONCRETE I-BEAMS. STEEL FOR LIFTING HOOKS SHALL BE NON DEFORMED BARS OF STRUCTURAL OR INTERMEDIATE GRADE BILLET STEEL. ALTERNATE LIFTING HOOKS MEETING THE APPROVAL OF THE ENGINEER MAY BE SUBSTITUTED FOR THE 1 1/4" LIFTING HOOK SHOWN.

BAR SCHEDULE

MARK	SIZE	TYPE	LENGTH	B	C	D	E	F	H	K
P1	#5	B	4'-9"	05	3/8	05				
P2	#3	A	4'-8"	05	3/8	05	05	1/3"	10/8"	10/8"
P3	#3	C	2'-7"	05	3/8	05	05	1/3"	10/8"	10/8"
P4	#6	STRT	35'-3"							
P5	#5	STRT	25'-9"							
P6	#5	B	3'-11"	05	3/8	05				

ALL DIMENSIONS GIVEN ARE OUT TO OUT OF BARS

DETAILS OF PRECAST PRESTRESSED CONCRETE I-BEAMS GRADE SEPARATION CROSS ROAD OVER F.A.T. ROUTE 80
F.A. PROJECT
F.A.T. ROUTE 80 SECTION (3247-4)
GRUNDY-KENDALL COUNTY
STATION 1307+24.83