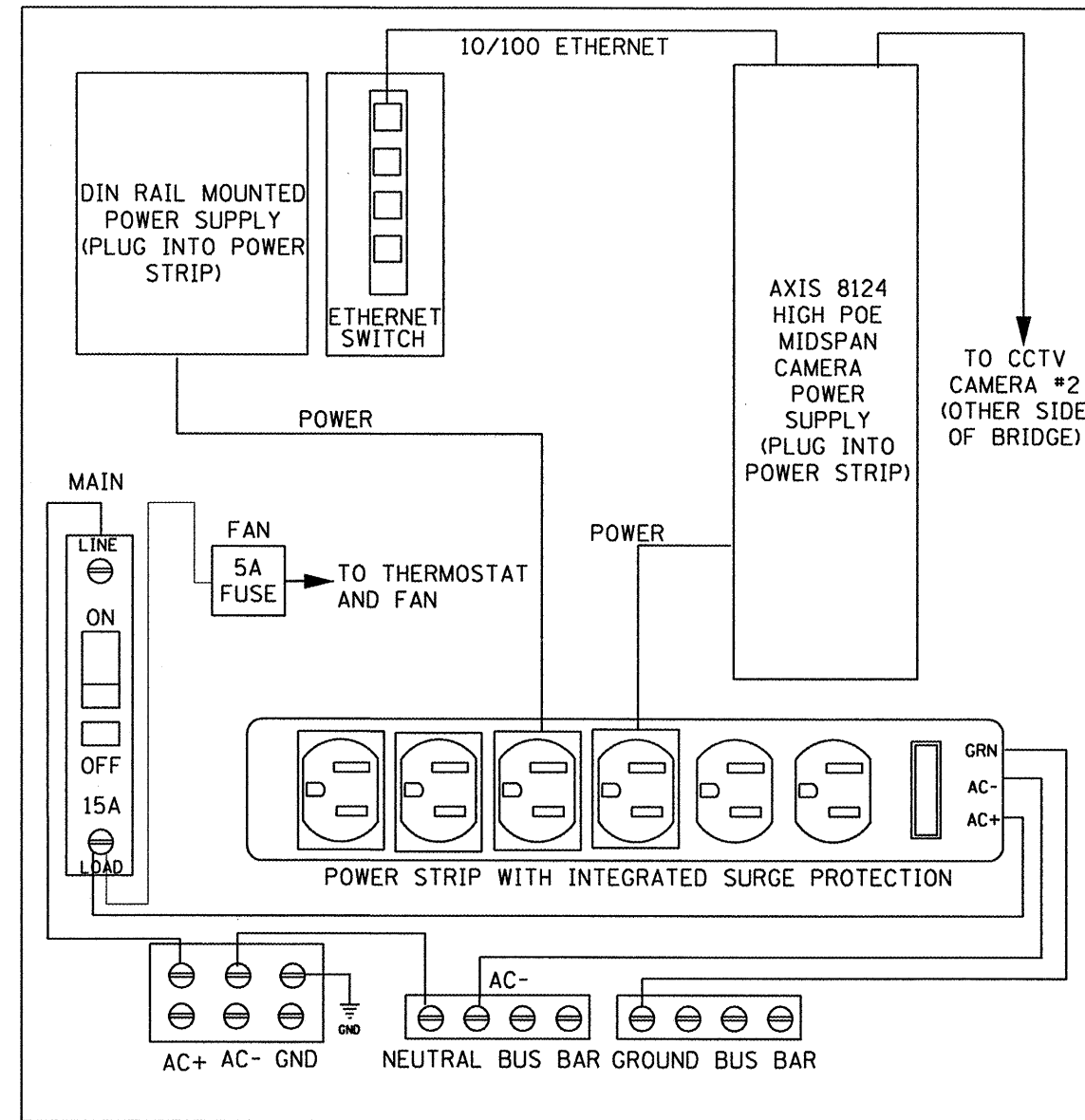
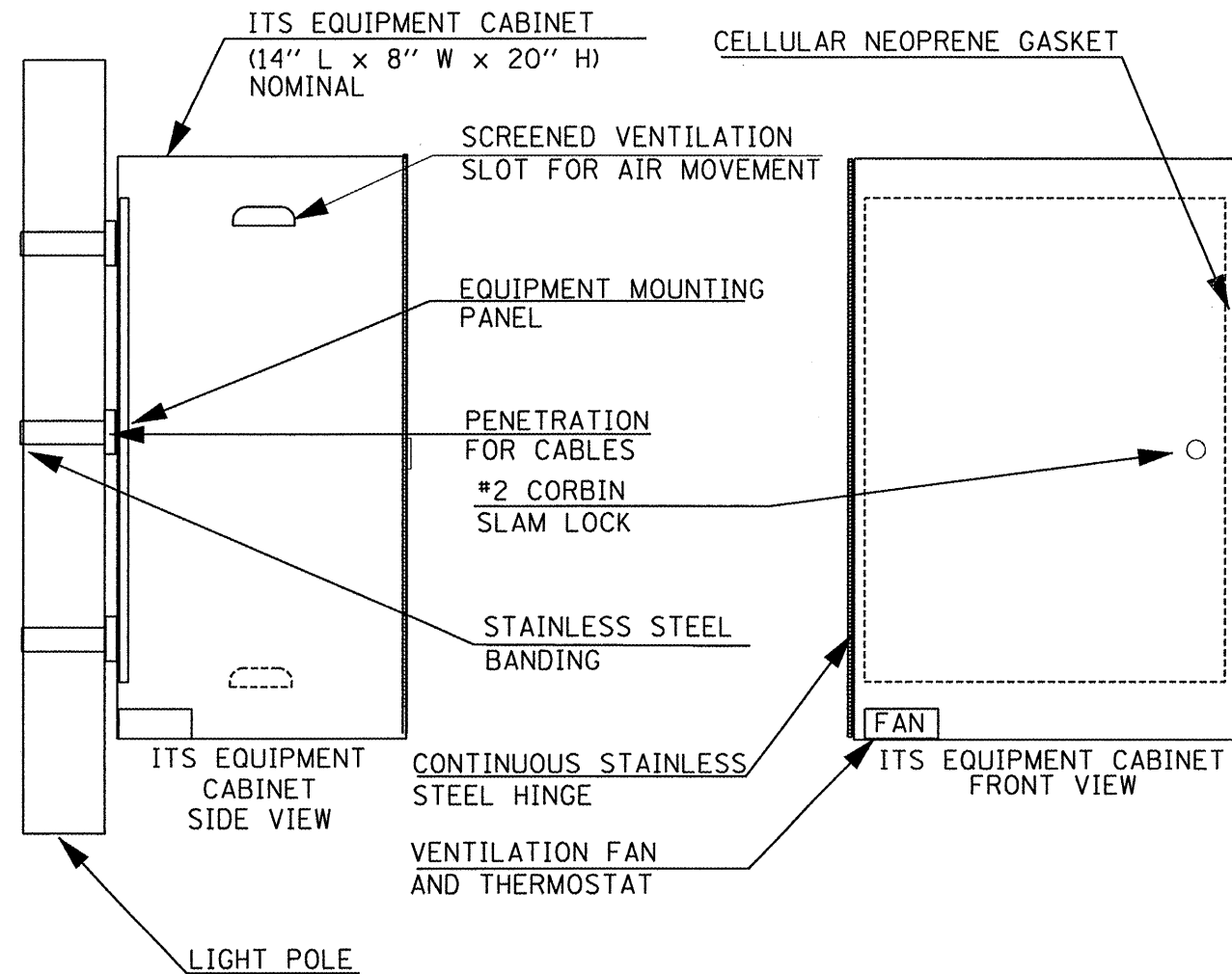


THE POWER SUPPLY FOR CAMERA #1 WILL BE INSTALLED IN THE EXISTING EQUIPMENT CABINET LOCATED IN THE MECHANICAL BUILDING.



ITS EQUIPMENT CABINET POWER PANEL DETAIL  
(POWER PANEL TO BE EQUIPPED WITH PLEXI-GLASS SAFETY SHIELD)

NOTES

1. THE ITS EQUIPMENT CABINET SHALL BE A NEMA TYPE 3R CABINET WITH MINIMUM OUTSIDE DIMENSIONS OF 14" (H) X 8" (W) X 20" (D). THE CABINET SHALL BE CONSTRUCTED FROM .125" THICK ALUMINUM AND HAVE A NATURAL FINISH.
2. THE CABINET SHALL BE FURNISHED WITH A NEOPRENE DOOR GASKET, AIR VENT LOUVERS, CONTINUOUS STAINLESS STEEL DOOR HINGE, #2 CORBIN SLAM LOCK, ALL STAINLESS STEEL HARDWARE, A THERMOSTATICALLY CONTROLLED VENTILATION FAN, AND DELUXE PLEATED FILTER.
3. WHEN INSTALLING THE EQUIPMENT CABINET ON THE EXISTING LIGHT POLE, THE CONTRACTOR SHALL DRILL A 1" DIAMETER HOLE IN THE POLE AND CABINETS, INSTALL A WEATHERPROOF NIPPLE, PLASTIC BUSHINGS, AND UTILIZE SILICONE CAULKING AROUND THE PERIMETER OF THE CABINET TO PREVENT WATER INTRUSION. THE COST OF THIS WORK SHALL BE INCLUDED IN THE UNIT BID PRICE FOR THE EQUIPMENT CABINET. NO OTHER CABINET PENETRATIONS SHALL BE ALLOWED TO MINIMIZE THE POTENTIAL FOR WATER INTRUSION.

FILE NAME =	USER NAME = longsr	DESIGNED -	REVISED -	<b>STATE OF ILLINOIS DEPARTMENT OF TRANSPORTATION</b>	<b>PROPOSED ITS EQUIPMENT CABINET DETAIL</b>	F.A.P. RTE.	SECTION	COUNTY	TOTAL SHEETS	SHEET NO.	
D468828-Dqavka Video Surveillance-Final	5-10-10.dgn	DRAWN -	REVISED -			657	(114RAI)	HENDERSON	21	15	
	PLOT SCALE = 75.1768 ' / IN.	CHECKED -	REVISED -			CONTRACT NO. 68828		ILLINOIS FED. AID PROJECT			
	PLOT DATE = 6/10/2010	DATE -	REVISED -			SCALE: NONE	SHEET NO. ___ OF ___ SHEETS	STA. _____ TO STA. _____			