

F.A. RTE.	SECTION	COUNTY	TOTAL SHEETS	SHEET NO.
N/A	D4 MAINT YARD REPAIRS	STARK	9	1
		ILLINOIS	CONTRACT NO. 68A06	

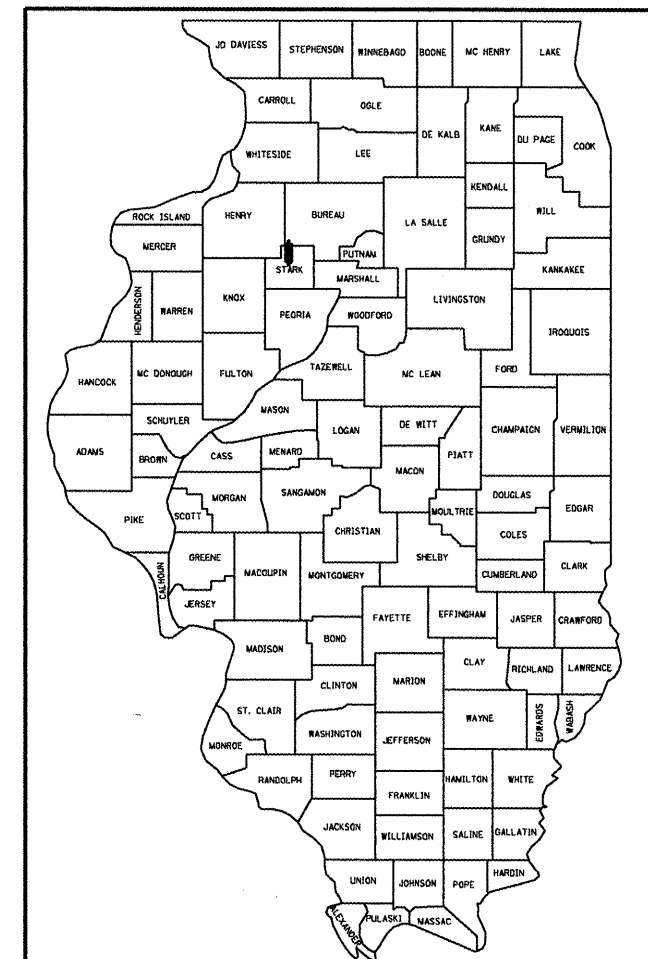
STATE OF ILLINOIS
DEPARTMENT OF TRANSPORTATION
DIVISION OF HIGHWAYS

**PROPOSED
HIGHWAY PLANS**

SECTION D4 MAINT YARD REPAIRS 2011
ROUTE F.A.S. 1375 (ILLINOIS ROUTE 91)
STARK COUNTY

C-94-130-10

D-94-71-10

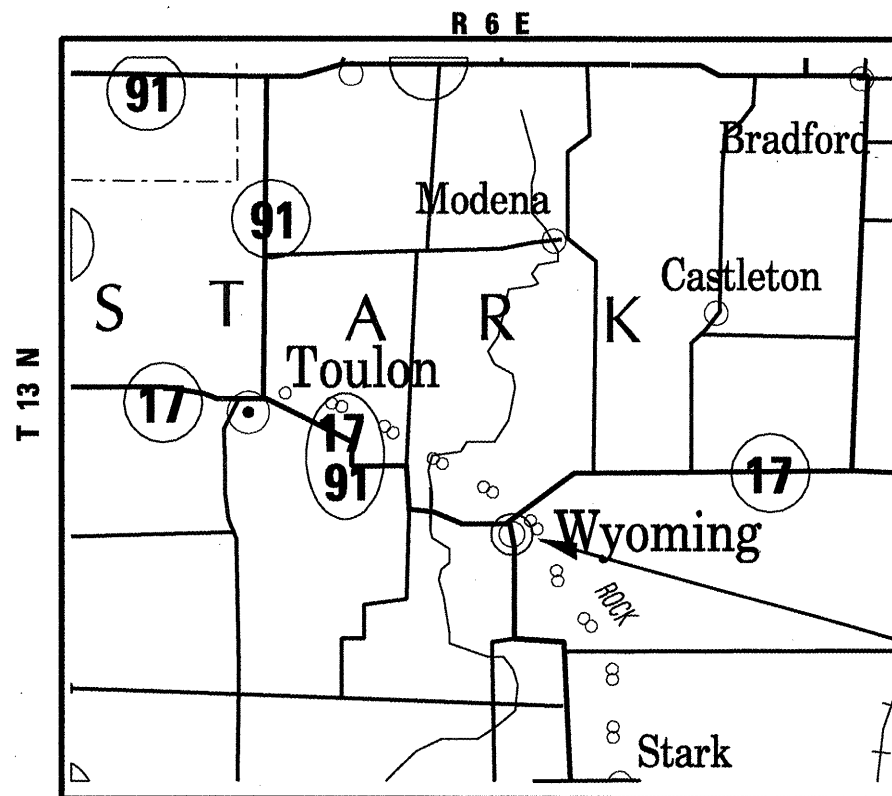


LOCATION OF SECTION INDICATED THUS: —

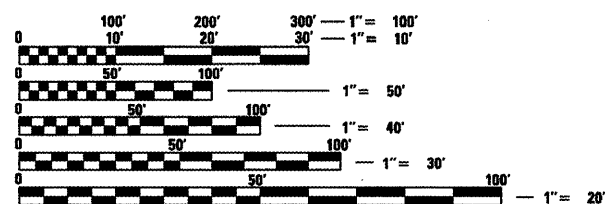
- FOR INDEX OF SHEETS
1. Cover Sheet
 2. General Notes /Commitments /
Summary of Quantities
 3. Schedule of Quantities
 4. Proposed Removal Plan
 5. Proposed Plan Layout
 - 6-9 CADD Standards

STANDARDS

- 420001-07
- 420601-05
- 420701-02



PROJECT LOCATION



FULL SIZE PLANS HAVE BEEN PREPARED USING STANDARD ENGINEERING SCALES. REDUCED SIZED PLANS WILL NOT CONFORM TO STANDARD SCALES. IN MAKING MEASUREMENTS ON REDUCED PLANS, THE ABOVE SCALES MAY BE USED.

J.U.L.I.E.
JOINT UTILITY LOCATION INFORMATION FOR EXCAVATION
1-800-892-0123
OR 811

PROJECT ENGINEER CHRISTOPHER MAUSHARD (309) 671-3453
PROJECT MANAGER TRAVIS WILLIAMS & STACEY LONG (309) 671-3477
CATALOG NO. 034493-00D
CONTRACT NO. 68A06

GROSS LENGTH = 0.00 FT. = 0.000 MILE
NET LENGTH = 0.00 FT. = 0.000 MILE

STATE OF ILLINOIS
DEPARTMENT OF TRANSPORTATION
DIVISION OF HIGHWAYS

SUBMITTED July 26 2010

[Signature]
DEPUTY DIRECTOR OF HIGHWAYS, REGION ENGINEER

August 3 2010
Scott E. Stitt, P.E.
acting ENGINEER OF DESIGN AND ENVIRONMENT

August 3 2010
Christine M. Reed, P.E.
DIRECTOR OF HIGHWAYS, CHIEF ENGINEER

PRINTED BY THE AUTHORITY
OF THE STATE OF ILLINOIS

GENERAL NOTES

HOT-MIX ASPHALT MIXTURE REQUIREMENTS

Mixture Use(s):	SURFACE COURSE
AC/PG:	SBS-PG76-22
RAP % (Max)**:	0%
Design Air Voids:	4.2% @ N=70
Mixture Composition:	III. 9.5 or 12.5
(Gradation Mixture)	MIXTURE D (DOLOMITE LIMESTONE ONLY)
Friction Aggregate	

** If the RAP option is selected, the asphalt cement grade may need to be adjusted; this will be determined by the Engineer.

ENVIRONMENTAL REVIEWS

Prior to the use of any proposed borrow areas, use areas (temporary access roads, detours, run-arounds, etc.) and/or waste areas, the Contractor shall file the required environmental resource request surveys according to Section 107.22 of the Standard Specifications. These surveys are required in order for the Department to conduct cultural and biological resource surveys for the proposed site.

Prior to any waste materials being removed from the construction site the required environmental resource surveys will need to be obtained and filed by the Contractor. Excess waste products removed from the construction site shall be disposed of as required in Section 202.03 of the Standard Specifications.

Any protruding metal bars shall be removed prior to the disposal of broken concrete at approved disposal sites.

The required environmental resource documentation shall include the following:

- * BDE Form 2289 (Environmental Survey Request)
- * A location map showing the size limits and location of the use area
- * Signed property owner agreement form-D4 PI0100
- * Color photographs depicting the use area
- * Borrow Area Entry Agreement form-D4 PI0101

Please note that a minimum of two weeks shall be allowed for the District to obtain the required environmental clearances.

COMMITMENT

NO COMMITMENTS HAVE BEEN MADE FOR THIS PROJECT

SUMMARY OF QUANTITIES

S P L I T Y	CODE NO.	ITEM	UNIT	TOTAL QTY	STARK COUNTY
					1000 100% STATE
	20200100	EARTH EXCAVATION	CU YD	145	145
	40600215	POLYMERIZED BITUMINOUS MATERIALS (PRIME COAT)	TON	9.6	9.6
	40600982	HOT - MIX ASPHALT SURFACE REMOVAL - BUTT JOINT	SQ YD	74	74
	40603340	HOT - MIX ASPHALT SURFACE COURSE, MIX "D", N70	TON	538	538
	42000300	PORTLAND CEMENT CONCRETE PAVEMENT 8"	SQ YD	2118	2118
	42001200	PAVEMENT FABRIC	SQ YD	2118	2118
	42001300	PROTECTIVE COAT	SQ YD	2118	2118
	44000198	HOT - MIX ASPHALT SURFACE REMOVAL, VARIABLE DEPTH	SQ YD	2187	2187
	67100100	MOBILIZATION	L SUM	1	1
	Z0013798	CONSTRUCTION LAYOUT	L SUM	1	1

Job Specific Note

4" HMA Surface course shall be placed in two (2) lifts, consisting of 2" per lift. Each lift shall be compacted per article 406.07 of the Standard Specifications.

FILE NAME = D468A05-shr-plan.dgn	USER NAME = williamstro	DESIGNED - DRAWN -	REVISED - REVISED -	STATE OF ILLINOIS DEPARTMENT OF TRANSPORTATION		GENERAL NOTES		F.A. RTE. N/A	SECTION D4 MAINT YARD REPAIRS	COUNTY STARK	TOTAL SHEETS 9	SHEET NO. 2
	PLOT SCALE = 1/8" = 1' / IN.	CHECKED - DATE -	REVISED - REVISED -					SCALE: _____	SHEET NO. _____ OF _____ SHEETS	STA. _____ TO STA. _____	CONTRACT NO. 68A06	

HOT-MIX ASPHALT SURFACE REMOVAL BUTT JOINT	
LOCATION	SQ. YD.
JOBSITE	74
TOTAL	74

PORTLAND CEMENT CONCRETE PAVEMENT 8"	
LOCATION	SQ. YD.
JOBSITE	2118
TOTAL	2118

PRIME COAT CONVERSION FACTORS		
SURFACE TYPE	BIT PR COAT	AGG PR COAT
	(GAL/SQ YD)	(LB/SQ YD)
COLD MILLED SURFACES	0.1	4
EXISTING PAVEMENT	0.05	4
NEW BITUMINOUS COURSES	0.03	2

HOT-MIX ASPHALT SURFACE REMOVAL VARIABLE DEPTH	
LOCATION	SQ. YD.
JOBSITE	2187
TOTAL	2187

PAVEMENT FABRIC	
LOCATION	SQ. YD.
JOBSITE	2118
TOTAL	2118

BITUMINOUS & AGGREGATE CONVERSION FACTORS	
BIT. SURF. COURSES	112 LB /SQ YD/IN
ALL OTHER BIT.	112 LB /SQ YD/IN
AGGREGATE SHOULDERS	2.05 TONS/CUYD

POLYMERIZED BITUMINOUS MATERIALS (PRIME COAT)	
LOCATION	TON
JOBSITE	9.6
TOTAL	9.6

PROTECTIVE COAT	
LOCATION	SQ. YD.
JOBSITE	2118
TOTAL	2118

HOT-MIX ASPHALT SURFACE COURSE MIX "D" N70	
LOCATION	TON
JOBSITE	538
TOTAL	538

EARTH EXCAVATION	
LOCATION	CU. YD.
JOBSITE	145
TOTAL	145

** 4" TOTAL DEPTH TO BE PLACED IN 2 LIFTS, 2" EACH**

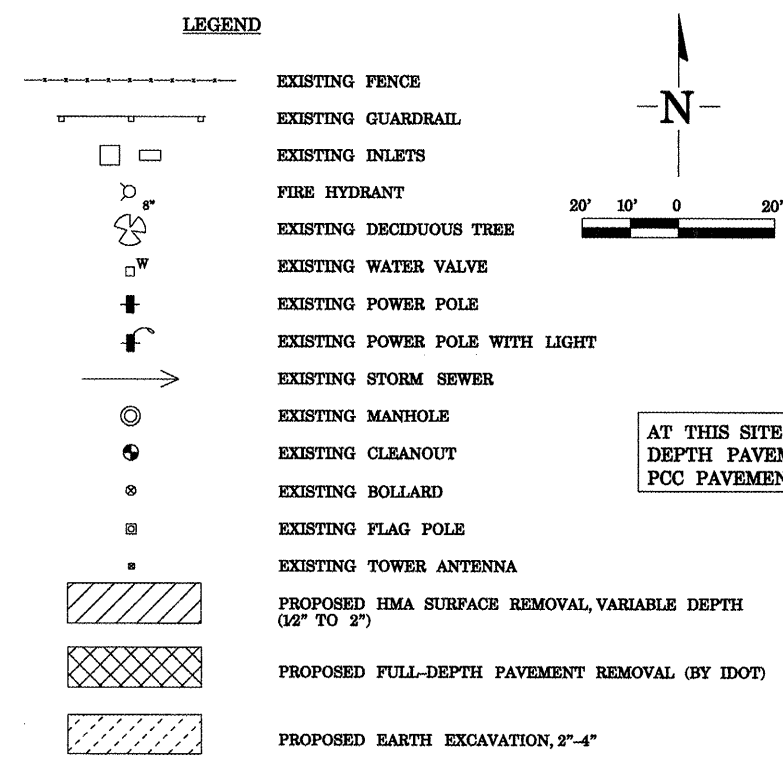
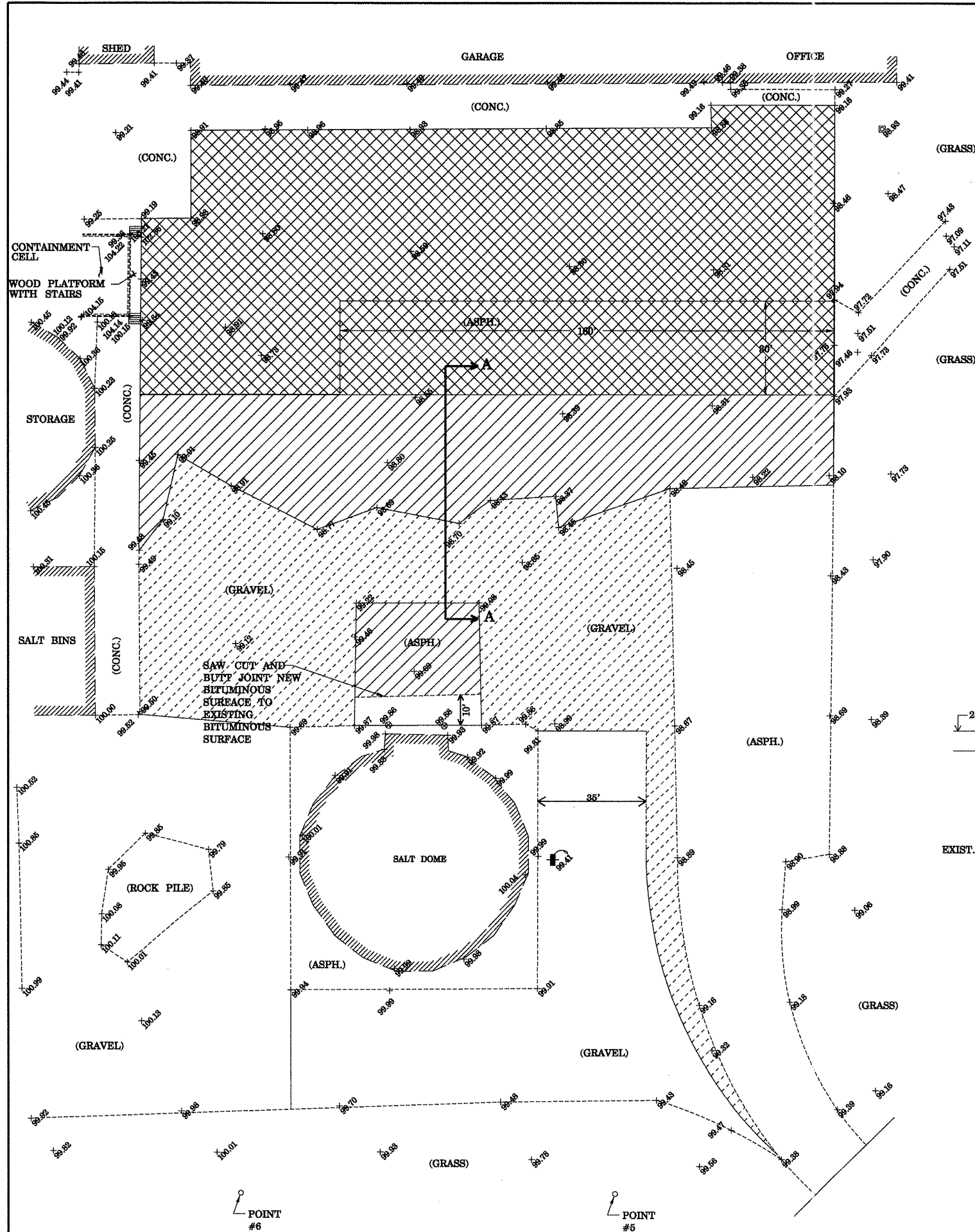
FILE NAME = Wyoming3.dgn	USER NAME = longsr	DESIGNED - ---	REVISED - ---
		DRAWN - ---	REVISED - ---
		PLOT SCALE = 48:0.0010 "/ IN.	REVISED - ---
		PLOT DATE = 7/27/2010	REVISED - ---

STATE OF ILLINOIS
DEPARTMENT OF TRANSPORTATION

SCHEDULE OF QUANTITIES

SCALE: _____ SHEET NO. ___ OF ___ SHEETS STA. _____ TO STA. _____

F.A. RTE.	SECTION	COUNTY	TOTAL SHEETS	SHEET NO.
N/A	D4 MAINT. YRD. REPAIRS 2011	STARK	9	3
CONTRACT NO. 68A06			ILLINOIS FED. AID PROJECT	

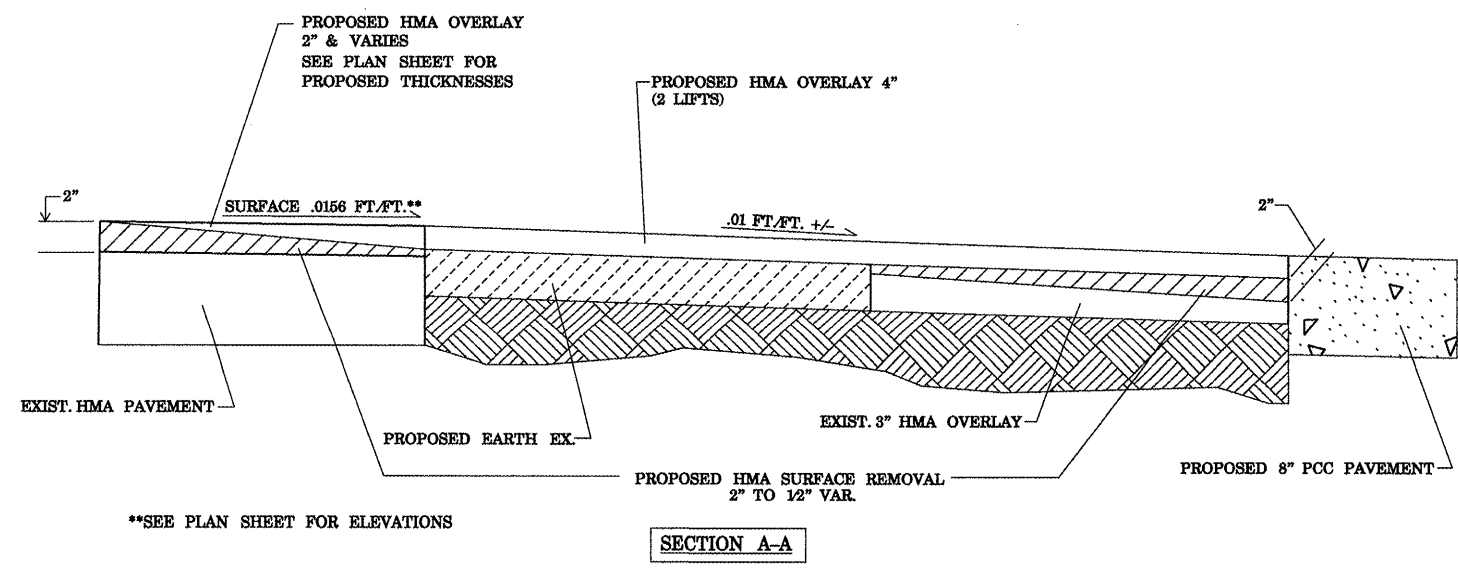


BENCHMARK "A" "M" IN MUELLER ON THE NORTH SIDE OF FIRE HYDRANT AT THE NORTHEAST CORNER OF I.D.O.T. OFFICE. ELEV. = 100.00 (ASSUMED)

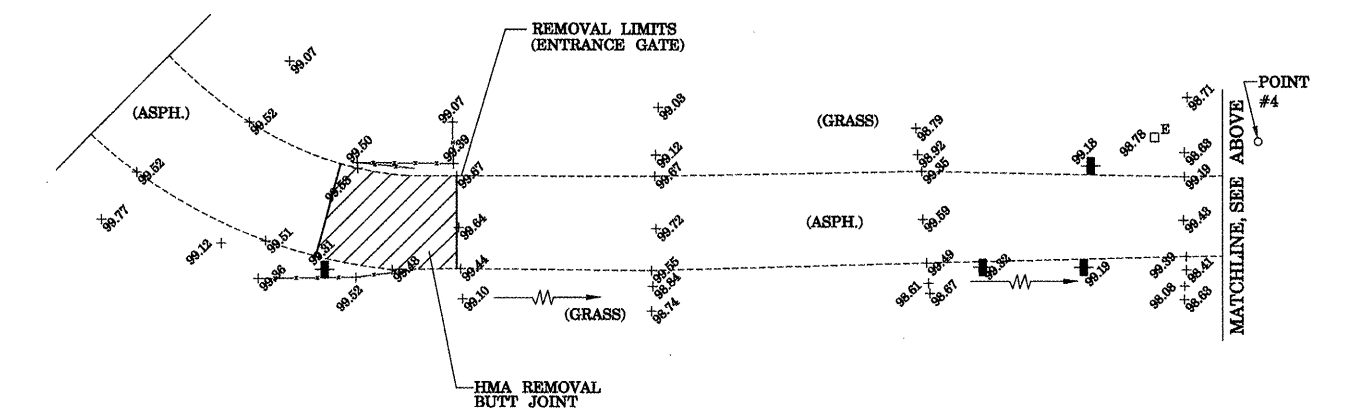
NOTE: ALL BITUMINOUS MATERIAL THAT IS REMOVED BY MILLING AND/OR ALL EXCAVATED AGGREGATE MATERIALS ARE TO REMAIN THE PROPERTY OF I.D.O.T., SHALL REMAIN ON THE SITE, AND SHALL BE PLACED IN A LOCATION DESIGNATED BY THE I.D.O.T. MAINTENANCE FIELD ENGINEER.

ALL OTHER UNUSED MATERIALS NOTED FOR EXCAVATION OR REMOVAL BY THE CONTRACTOR SHALL BE DISPOSED OF IN ACCORDANCE WITH ART. 202.08 OF THE STANDARD SPECIFICATIONS.

AT THIS SITE I.D.O.T. PERSONNEL WILL BE RESPONSIBLE FOR FULL DEPTH PAVEMENT REMOVAL AND GRAVEL REMOVAL TO ACCOMMODATE PCC PAVEMENT.



**SEE PLAN SHEET FOR ELEVATIONS



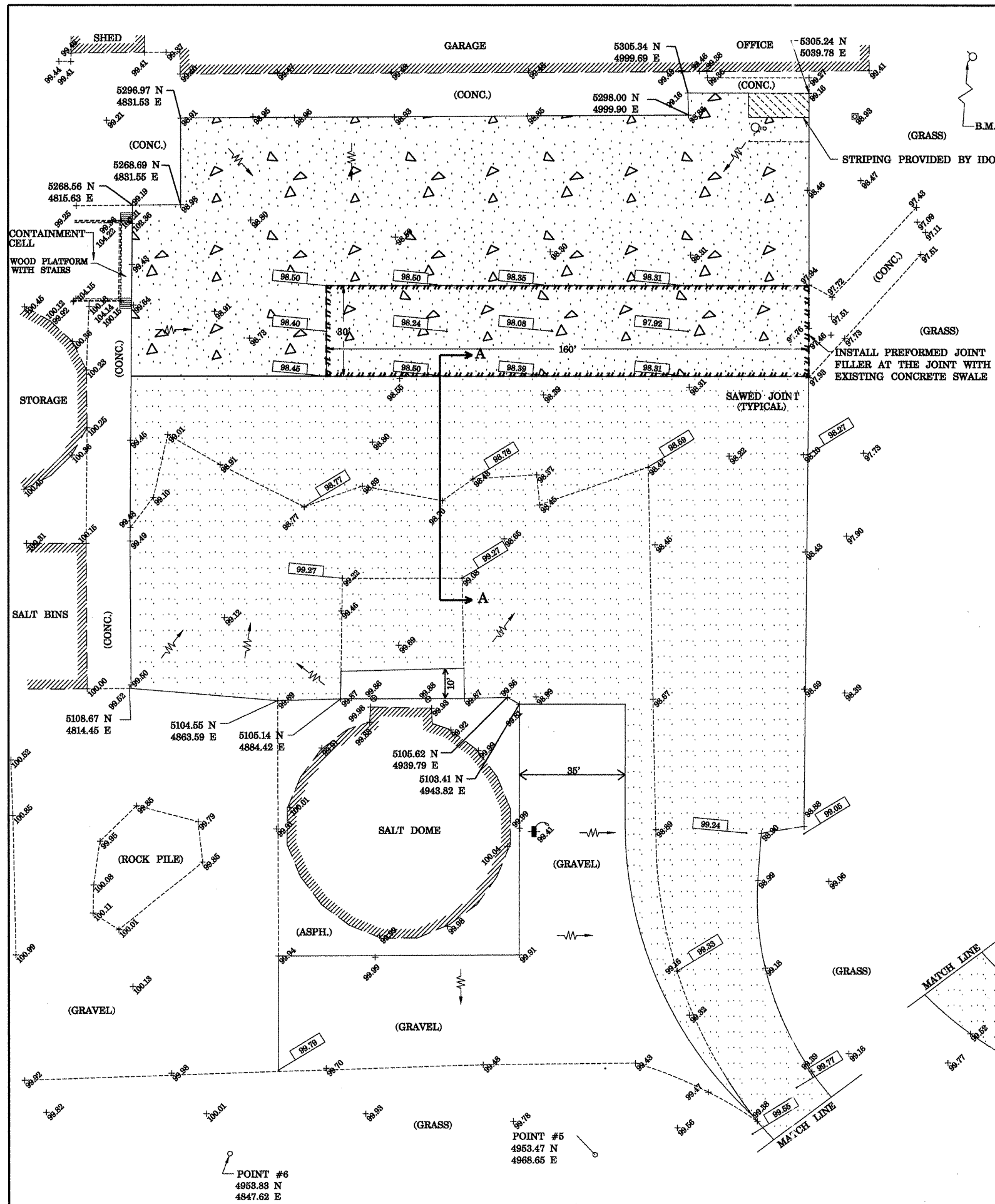
FILE NAME = Wyoming3.dgn	USER NAME = longpr	DESIGNED -	REVISED -
		DRAWN -	REVISED -
		CHECKED -	REVISED -
		DATE -	REVISED -

**STATE OF ILLINOIS
DEPARTMENT OF TRANSPORTATION**

PROPOSED REMOVAL PLAN

SCALE: _____ SHEET NO. ____ OF ____ SHEETS STA. _____ TO STA. _____

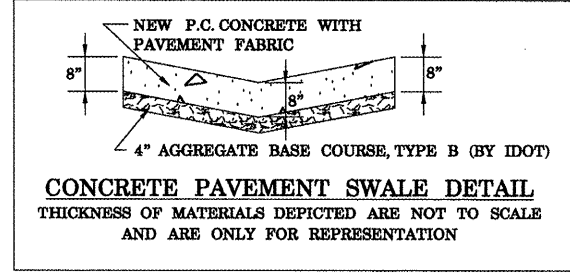
F.A. RTE.	SECTION	COUNTY	TOTAL SHEETS	SHEET NO.
N/A D4 MAINT. YRD. REPAIRS 2011		STARK	9	4
CONTRACT NO. 68A06			ILLINOIS FED. AID PROJECT	



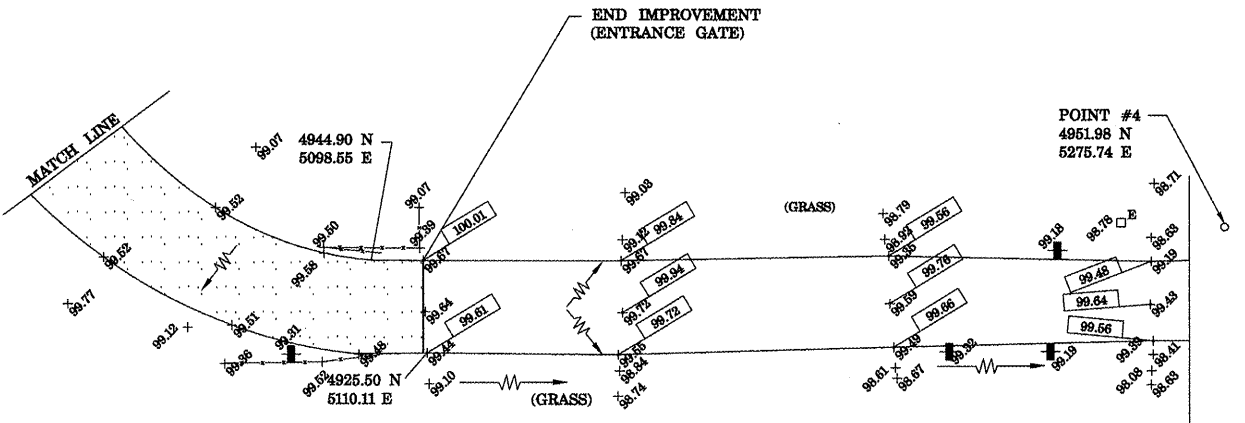
BENCHMARK "A" "M" IN MUELLER ON THE NORTH SIDE OF FIRE HYDRANT AT THE NORTHEAST CORNER OF I.D.O.T. OFFICE. ELEV. = 100.00 (ASSUMED)

NOTE: WHERE NEW MATERIAL IS TO BE PLACED ADJACENT TO EXISTING SURFACES OR BUILDINGS, THE FINISHED SURFACE ELEVATION OF THE NEW MATERIAL SHALL MATCH THE ELEVATION OF THE EXISTING SURFACE UNLESS NOTED OTHERWISE. THE BITUMINOUS SURFACE SHALL BE PLACED TO PROVIDE A UNIFORM SLOPE BETWEEN THE ELEVATION POINTS NOTED.

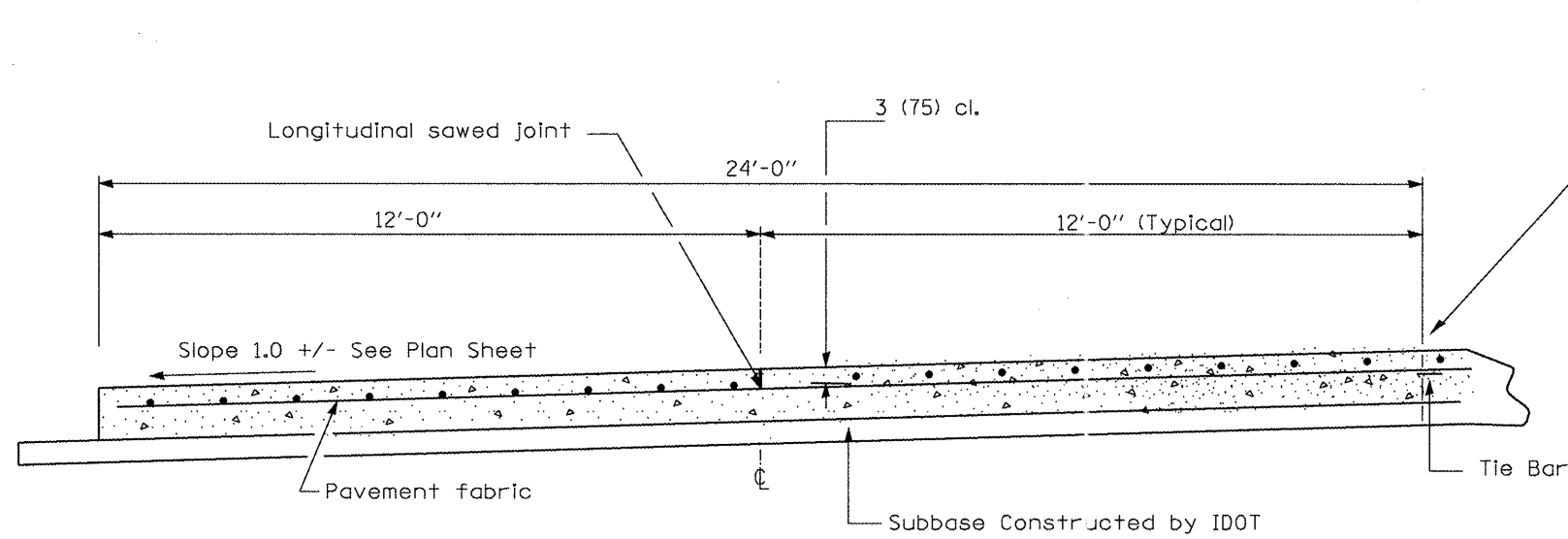
ALL EXISTING GRAVEL SURFACES THAT ARE TO RECEIVE BITUMINOUS SURFACING SHALL BE COMPACTED TO THE SATISFACTION OF THE ENGINEER. ADDITIONAL AGGREGATE SHALL BE PLACED AND COMPACTED TO PROVIDE A UNIFORM SURFACE.



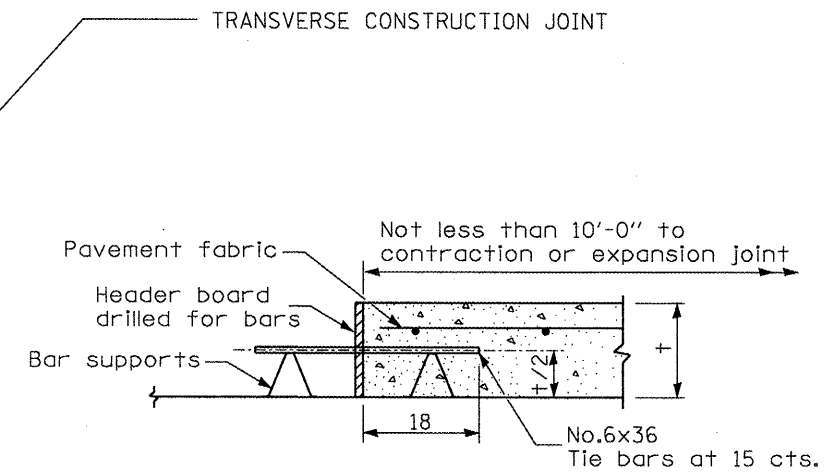
- LEGEND**
- EXISTING FENCE
 - EXISTING GUARDRAIL
 - EXISTING INLETS
 - FIRE HYDRANT
 - EXISTING DECIDUOUS TREE
 - EXISTING WATER VALVE
 - EXISTING POWER POLE
 - EXISTING POWER POLE WITH LIGHT
 - EXISTING STORM SEWER
 - EXISTING MANHOLE
 - EXISTING CLEANOUT
 - EXISTING BOLLARD
 - EXISTING FLAG POLE
 - EXISTING TOWER ANTENNA
 - GENERAL DRAINAGE DIRECTION OF NEW SURFACE
 - PROPOSED GRADE
 - PROPOSED PCC SWALE LIMITS
 - PROPOSED PCC PAVEMENT 8" WITH PAVEMENT FABRIC
 - PROPOSED HMA SURFACE, MIX "D" N70, 4" & VARIES



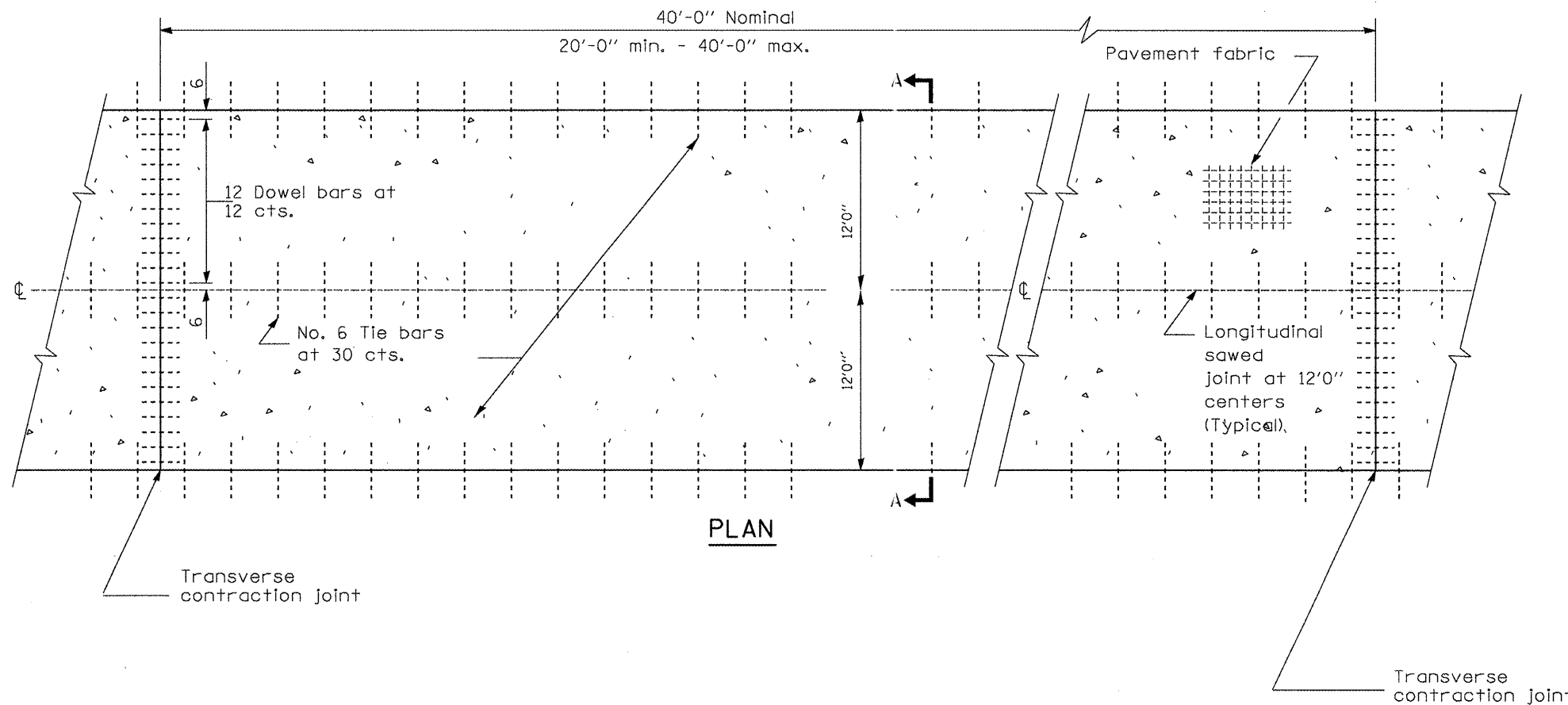
FILE NAME = Wgoming3.dgn	USER NAME = longsr	DESIGNED - ---	REVISED - ---	STATE OF ILLINOIS DEPARTMENT OF TRANSPORTATION	PROPOSED PLAN LAYOUT			F.A. RTE. N/A	SECTION D4 MAIN, YRD. REPAIRS 2011	COUNTY STARK	TOTAL SHEETS 9	SHEET NO. 5
PLOT SCALE = 400.0000" ± / IN.		CHECKED - ---	REVISED - ---		SCALE: -----	SHEET NO. -- OF -- SHEETS	STA. ----- TO STA. -----	CONTRACT NO. 68A06				
PLOT DATE = 7/27/2010		DATE - ---	REVISED - ---		ILLINOIS FED. AID PROJECT							



SECTION A-A



TRANSVERSE CONSTRUCTION JOINT



PLAN

GENERAL NOTES

For detail of the drainage way see Plan Sheet

Sawcutting, Tie Bars, and Dowel Bars will not be measured for payment but will be considered as included in the unit price bid for PCC Pavement 8" in accordance with ART. 508.07 of the Standard Specifications

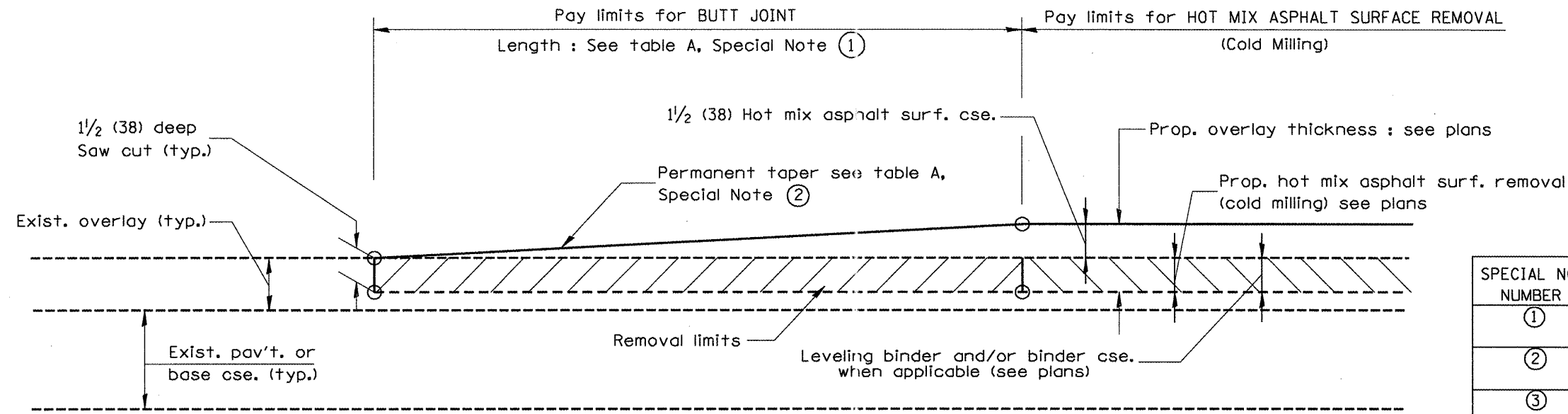
See Standard 420001 for details not shown.

See Standard 420701 for pavement fabric details.

All dimensions are in inches (millimeters) unless otherwise shown.

FILE NAME = D468A06-shr-plan.dgn	USER NAME = williamstro	DESIGNED -	REVISED -	STATE OF ILLINOIS DEPARTMENT OF TRANSPORTATION	PCC PAVEMENT DETAIL			F.A. RTE.	SECTION	COUNTY	TOTAL SHEETS	SHEET NO.
	PLOT SCALE = 26.0025' / IN.	DRAWN -	REVISED -		NOT TO SCALE	N/A	D4 MAINT YARD REPAIRS	STARK	9	6		
PLOT DATE = 7/27/2010	CHECKED -	REVISED -	REVISED -	SCALE: _____	SHEET NO. _____	OF _____	SHEETS	STA. _____	TO STA. _____	CONTRACT NO. 68A06		
	DATE -	REVISED -	REVISED -	ILLINOIS FED. AID PROJECT								

DESIGNER NOTES:
 1. Include District Special Provision for Butt Joints & for Hot Mix Asphalt Removal (Cold Milling).
 2. The butt joints pay item includes the saw cut & temporary ramp. Payment for the Butt Joint applies whether or not the project features Hot Mix Asphalt Removal (Cold Milling).



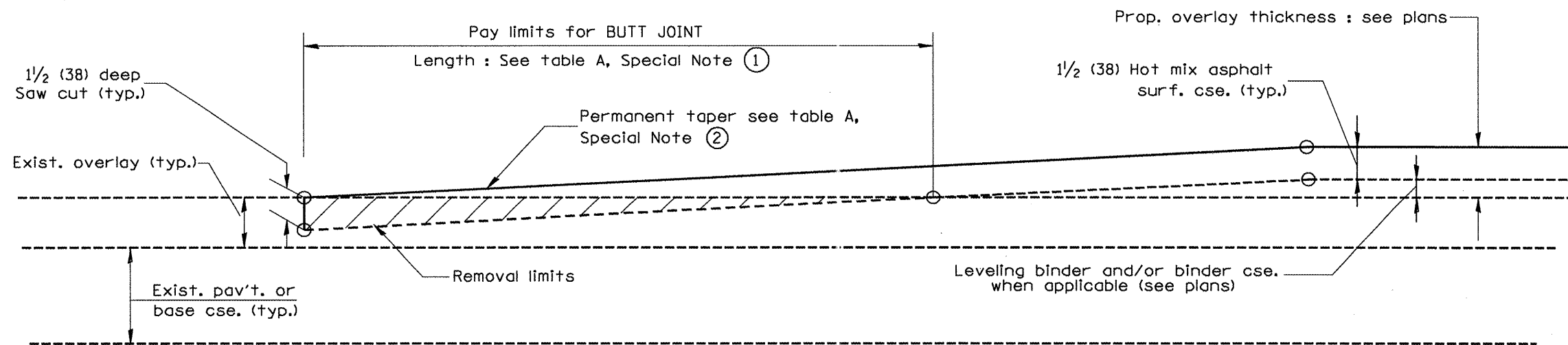
CASE 1 : WITH HOT MIX ASPHALT SURFACE REMOVAL (COLD MILLING)

TABLE A
(LENGTHS AND TAPER RATES)

SPECIAL NOTE NUMBER	ELEMENT	MAINLINE INTERSTATES & 4-LANE EXPRESSWAYS	ALL OTHERS
①	LENGTH OF BUTT JOINT	60'(18.0 m)	30'(9.0 m)
②	PERMANENT TAPER RATE	1:480	1:240
③	TEMPORARY RAMP TAPER RATE	1:80	1:40
④	TEMPORARY RAMP LENGTH	10'(3.0 m)	5'(1.5 m)
⑤	LENGTH OF BUTT JOINT	10'(3.0 m)	10'(3.0 m)

GENERAL NOTES

- The work shall be done in accordance with Article 406.08 and the Special Provision for Butt Joints.
- The pavement surface to be removed may be either bituminous or P.C. concrete. The work shall be performed in accordance with Article 440.04 and the Special Provisions for Butt Joints.
- The saw cut joints shall be primed just prior to the placing of bituminous material. The work will be in accordance with the applicable portions of Article 406.05.



CASE 2 : NO HOT MIX ASPHALT SURFACE REMOVAL (COLD MILLING)

All dimensions are in inches (millimeters) unless otherwise noted.

01-01-97	RENUM. C-23.01, NEW REVISION BOX	T.P.																	
04-01-97	CORRECTION TO DEPTH	J.A.																	
09-15-05	REVISED DESIGNER NOTE	M.M.A.																	
10-16-06	REVISED TO 2007 SPEC.	M.A.																	

STATE OF ILLINOIS
DEPARTMENT OF TRANSPORTATION

BUTT JOINTS

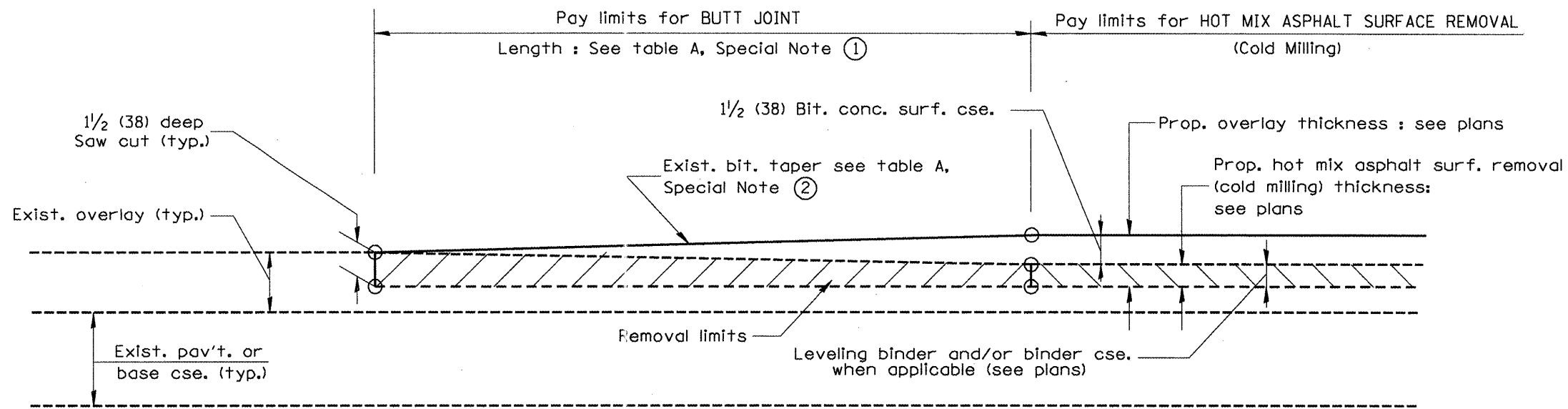
NOT TO SCALE

SHT. 1 OF 3
CADD STD. 406101-D4

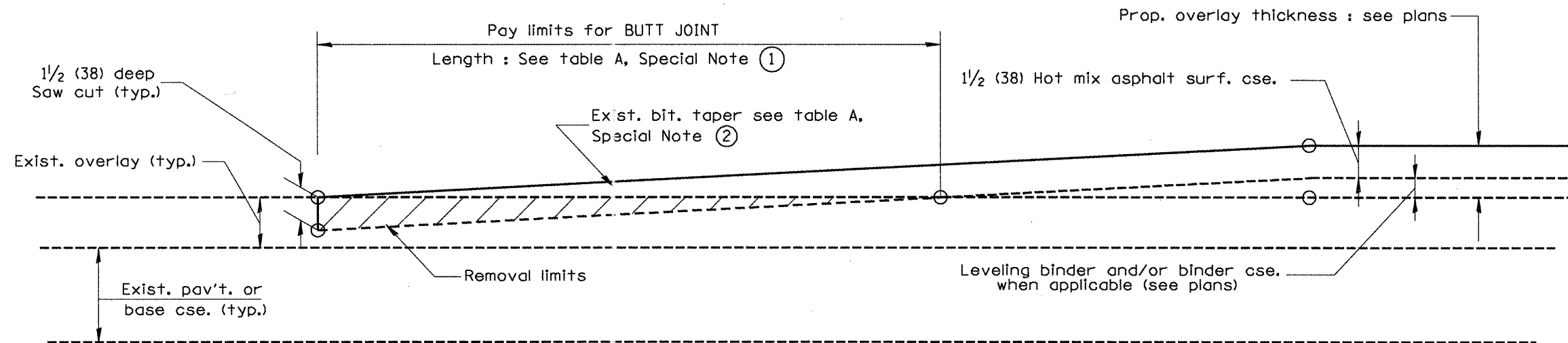
F.A. RTE.	SECTION	COUNTY	TOTAL SHEETS	SHEET NO.
N/A	D4 MAINT YARD REPAIR	STARK	9	7

CONTRACT NO. 68A06

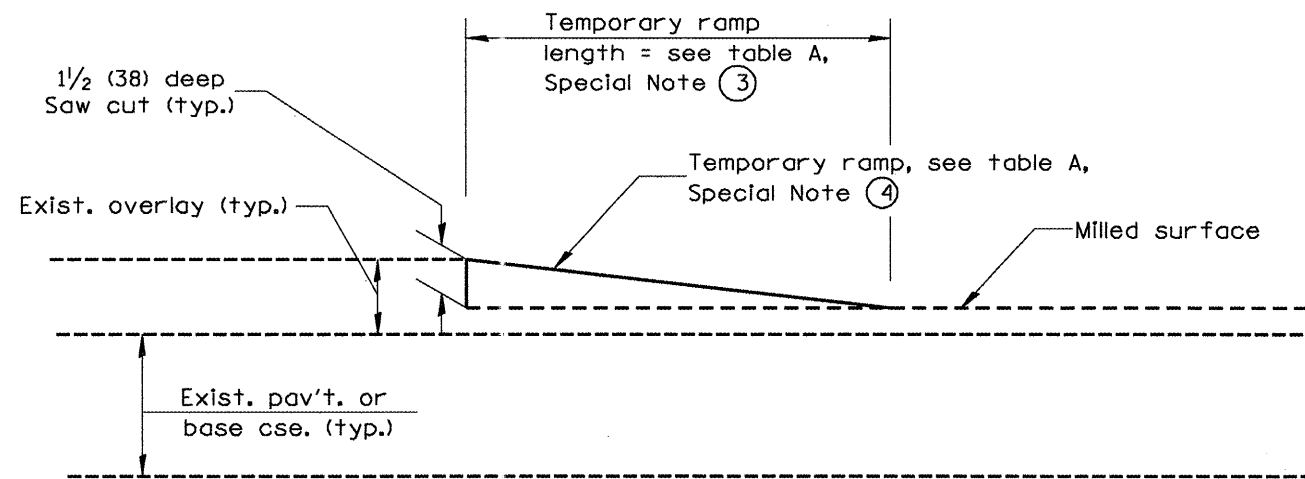
FED. ROAD DIST. NO. ILLINOIS FED. AID PROJECT



**CASE 3 : WITH HOT MIX ASPHALT SURFACE REMOVAL (COLD MILLING)
TIE-IN TO EXISTING BITUMINOUS TAPER**



**CASE 4 : NO HOT MIX ASPHALT SURFACE REMOVAL (COLD MILLING)
TIE-IN TO EXISTING BITUMINOUS TAPER**



DETAIL TEMPORARY RAMP

All dimensions are in inches (millimeters) unless otherwise noted.

STATE OF ILLINOIS DEPARTMENT OF TRANSPORTATION										BUTT JOINTS				SHT. 2 OF 3 CADD STD. 406101-D4		F.A. RTE. N/A		SECTION D4 MAINT YARD REPAIR		COUNTY STARK		TOTAL SHEETS 9		SHEET NO. 8	
										NOT TO SCALE				FED. ROAD DIST. NO.		ILLINOIS FED. AID PROJECT		CONTRACT NO. 68A06							

