

PROJECT ENGINEER: SAL MADONIA 217-782-4761  
 SQUAD LEADER: MARCUS BRUCE 217-524-0946

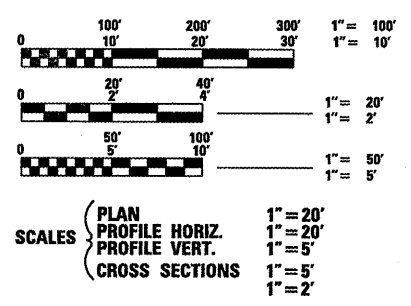
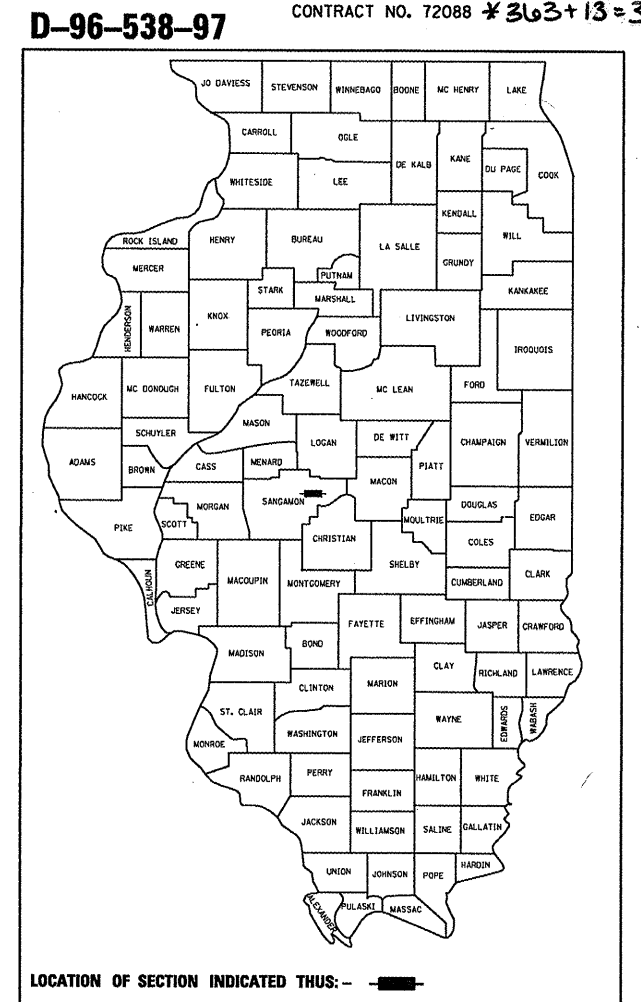
F.A.P. RTE.	SECTION	COUNTY	TOTAL SHEETS	SHEET NO.
• F.A.I. 72, F.A.P. 67, F.A.P. 75 & F.A.P. 668 • D-6 SPFLD-CLRLAKE DIRKSEN 2002	••	SANGAMON	363	1
FED. ROAD DIST. NO.	ILLINOIS	FED. AID PROJECT		
		CONTRACT NO. 72088	*363+13=376	

STATE OF ILLINOIS  
 DEPARTMENT OF TRANSPORTATION  
 DIVISION OF HIGHWAYS  
**PROPOSED  
 HIGHWAY PLANS**

FOR INDEX OF SHEETS SEE SHEET 2

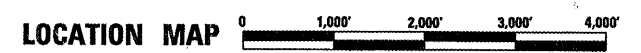
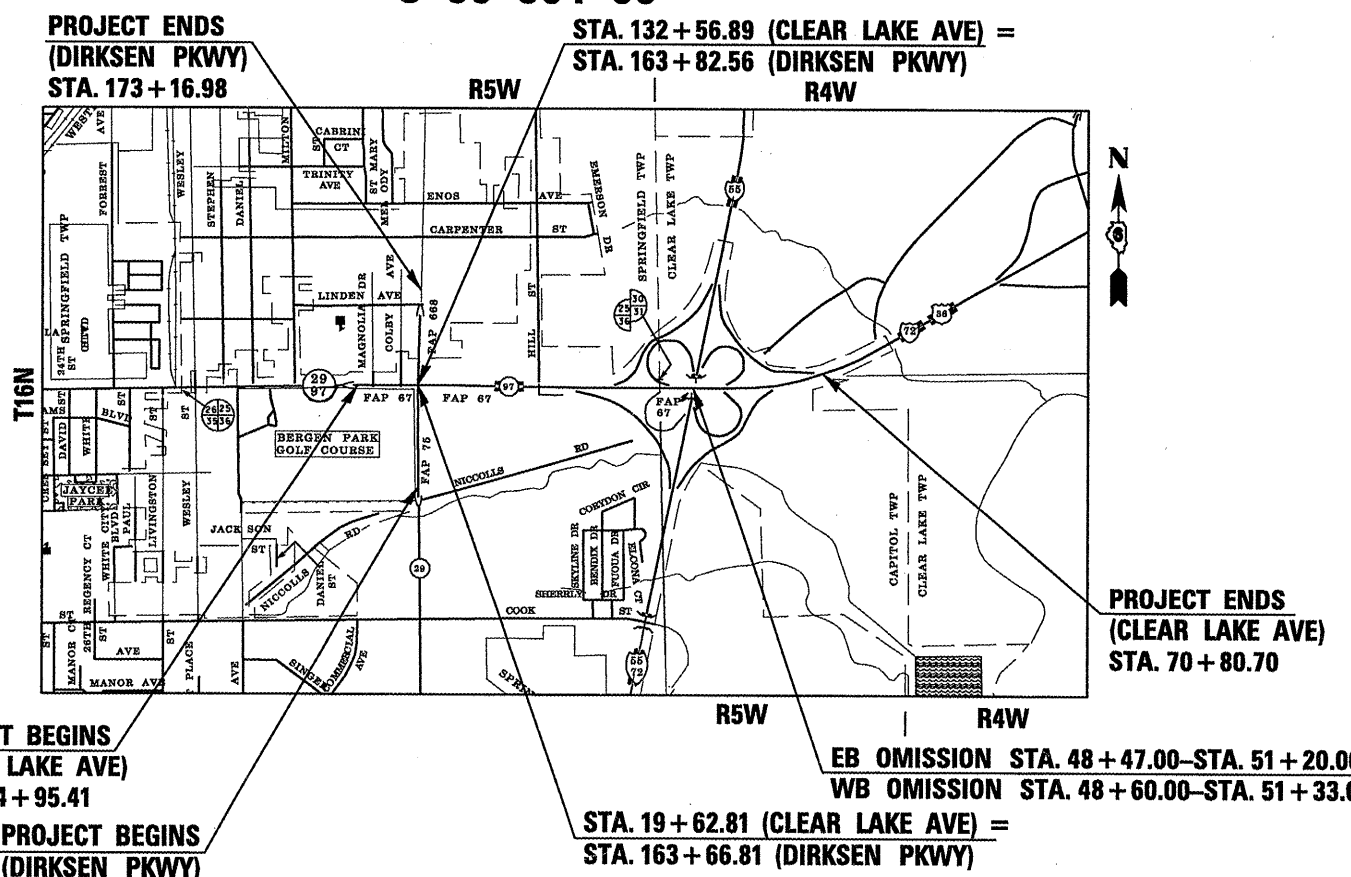
- ROADWAY CLASSIFICATION**
- F.A.P. 67 (CLEAR LAKE AVE) – OTHER PRINCIPAL ARTERIAL  
ADT 26,300 (2005)
  - F.A.P. 75 (DIRKSEN PKWY) – OTHER PRINCIPAL ARTERIAL  
ADT 25,200 (2005)
  - F.A.P. 668 (DIRKSEN PKWY) – OTHER PRINCIPAL ARTERIAL  
ADT 21,500 (2005)
  - F.A.I. 72 (INTERSTATE 72) – INTERSTATE  
ADT 24,700 (2005)

VARIOUS ROUTES  
**SECTION D-6 SPFLD-CLRLAKE DIRKSEN 2002**  
**SANGAMON COUNTY**  
**C-96-504-00**



FULL SIZE PLANS HAVE BEEN PREPARED USING STANDARD ENGINEERING SCALES, REDUCED SIZED PLANS WILL NOT CONFORM TO STANDARD SCALES, IN MAKING MEASUREMENTS ON REDUCED PLANS, THE ABOVE SCALES MAY BE USED.

FOR UNDERGROUND UTILITY LOCATIONS CALL J.U.L.I.E. TOLL FREE 1-800-892-0123 CLEAR LAKE TOWNSHIP SPRINGFIELD TOWNSHIP CAPITOL TOWNSHIP



GROSS LENGTH = 1.11 MILES	NET LENGTH = 1.06 MILES (CLEAR LAKE AVE)
GROSS LENGTH = 0.36 MILES	NET LENGTH = 0.36 MILES (DIRKSEN PKWY)
GROSS LENGTH = 1.47 MILES	NET LENGTH = 1.42 MILES (TOTAL PROJECT)

STATE OF ILLINOIS  
 DEPARTMENT OF TRANSPORTATION  
 DIVISION OF HIGHWAYS

SUBMITTED February 9 2010  
 Reg. Z Orndorff  
 DEPUTY DIRECTOR OF HIGHWAYS, REGION ENGINEER

May 7 2010  
 Scott E. Stitt, P.E.  
 acting ENGINEER OF DESIGN AND ENVIRONMENT

May 7 2010  
 Christine M. Reeder  
 DIRECTOR, DIVISION OF HIGHWAYS

FHWA \_\_\_\_\_ 20 \_\_\_\_\_  
 DIVISION ADMINISTRATOR



**BLANK, WESSELINK, COOK & ASSOCIATES**  
 ENGINEERS - CONSULTANTS  
 DECATUR, ILLINOIS

PETER B. BAYLES, P.E.  
 DATE 2/8/10 2010  
 EXPIRES NOVEMBER 30, 2011