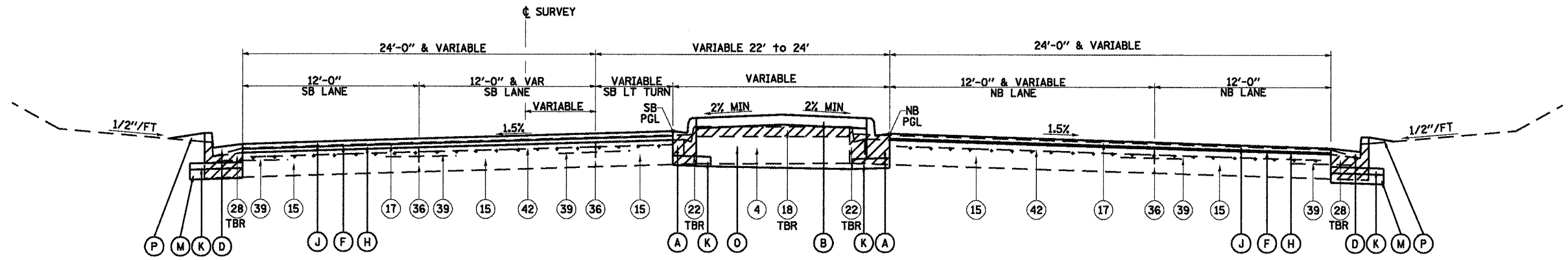
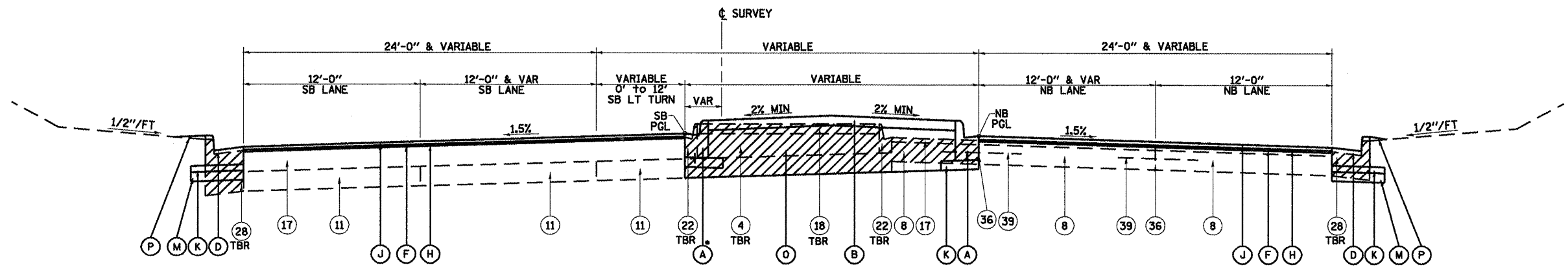


F.A.P. SECTION	COUNTY	TOTAL SHEETS	SHEET NO.
" "	SANGAMON	363	17
STA. TO STA.			
FED. ROAD DIST. NO.	ILLINOIS FED. AID PROJECT		
CONTRACT NO. 72088			



DIRKSEN PARKWAY
STA. 154 + 00.00 TO STA. 154 + 90.00



• DOWELLED

DIRKSEN PARKWAY
STA. 154 + 90.00 TO STA. 157 + 20.28 (NB)
STA. 154 + 90.00 TO STA. 159 + 91.29 (SB)

EXISTING LEGEND

- (4) EXISTING SAND FILL
- (8) EXISTING PCC BASE COURSE, 9"
- (11) EXISTING PAVEMENT, VARIABLE COMPOSITION
- (15) EXISTING STANDARD REINFORCED PCC PAVEMENT, 10"
- (17) EXISTING BITUMINOUS CONCRETE SURFACE
- (18) EXISTING PCC MEDIAN SURFACE, 4"
- (22) EXISTING COMBINATION CONCRETE CURB & GUTTER, TY. M-6.06
- (28) EXISTING COMBINATION CONCRETE CURB & GUTTER, TY. B-6.24
- (36) EXISTING LONGITUDINAL JOINT
- (39) EXISTING TIEBAR, #4, 2'-6" LONG, AT 2'-6" CENTERS
- (42) EXISTING PAVEMENT FABRIC

PROPOSED LEGEND

- (A) PROPOSED COMBINATION CONCRETE CURB & GUTTER, TYPE M-6.06
- (B) PROPOSED CONCRETE MEDIAN SURFACE, 4"
- (D) PROPOSED COMBINATION CONCRETE CURB & GUTTER, TYPE B-6.24
- (F) PROPOSED BITUMINOUS SURFACE REMOVAL (VARIABLE DEPTH)
- (H) PROPOSED LEVELING BINDER (MACHINE METHOD), N90, 3/4" MINIMUM DEPTH
- (J) PROPOSED POLYMERIZED HOT-MIX ASPHALT SURFACE COURSE, MIX "E", N90, 1 1/2"
- (K) PROPOSED SUB-BASE GRANULAR MATERIAL, TYPE C
- (M) PROPOSED SUB-BASE GRANULAR MATERIAL, TYPE A, 8"
- (O) PROPOSED SUB-BASE GRANULAR MATERIAL, TYPE B
- (P) SODDING

REVISIONS	
NAME	DATE

SHEET 7 OF 12
 ILLINOIS DEPARTMENT OF TRANSPORTATION
PROPOSED TYPICAL SECTIONS
DIRKSEN PARKWAY
 SCALE: NONE
 DATE 08/05
 DRAWN BY MLD
 CHECKED BY SJK