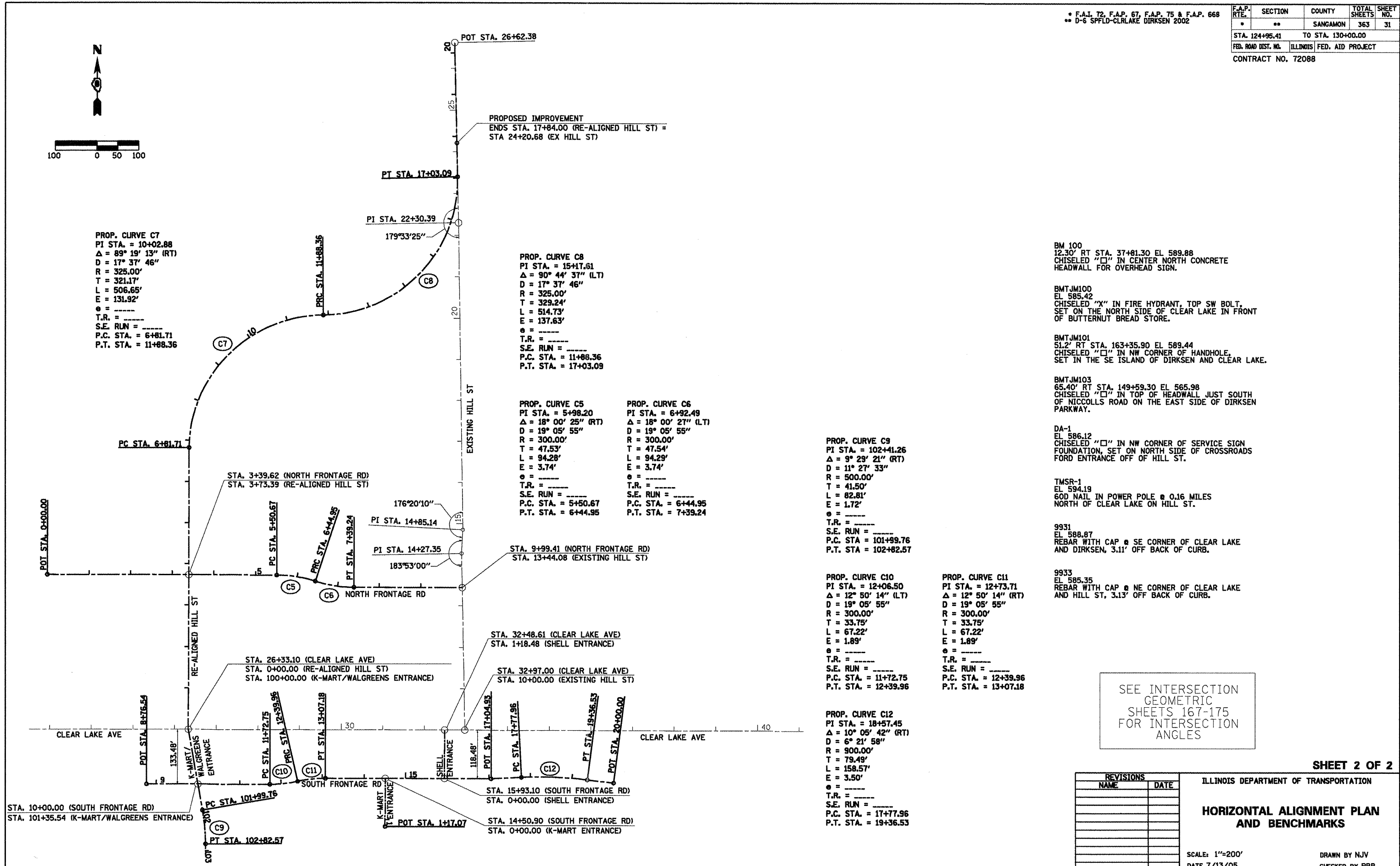
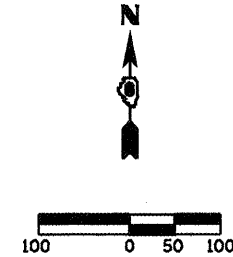


F.A.P. RTE.	SECTION	COUNTY	TOTAL SHEETS	SHEET NO.
	**	SANGAMON	363	31
STA. 124+95.41		TO STA. 130+00.00		
FED. ROAD DIST. NO.		ILLINOIS FED. AID PROJECT		
CONTRACT NO. 72088				



- BM 100  
12.30' RT STA. 37+81.30 EL 589.88  
CHISELED "□" IN CENTER NORTH CONCRETE HEADWALL FOR OVERHEAD SIGN.
- BMTJM100  
EL 585.42  
CHISELED "X" IN FIRE HYDRANT, TOP SW BOLT.  
SET ON THE NORTH SIDE OF CLEAR LAKE IN FRONT OF BUTTERNUT BREAD STORE.
- BMTJM101  
51.2' RT STA. 163+35.90 EL 589.44  
CHISELED "□" IN NW CORNER OF HANDHOLE.  
SET IN THE SE ISLAND OF DIRKSEN AND CLEAR LAKE.
- BMTJM103  
65.40' RT STA. 149+59.30 EL 565.98  
CHISELED "□" IN TOP OF HEADWALL JUST SOUTH OF NICCOLLS ROAD ON THE EAST SIDE OF DIRKSEN PARKWAY.
- DA-1  
EL 586.12  
CHISELED "□" IN NW CORNER OF SERVICE SIGN FOUNDATION, SET ON NORTH SIDE OF CROSSROADS FORD ENTRANCE OFF OF HILL ST.
- TMSR-1  
EL 594.19  
60# NAIL IN POWER POLE @ 0.16 MILES NORTH OF CLEAR LAKE ON HILL ST.
- 9931  
EL 588.87  
REBAR WITH CAP @ SE CORNER OF CLEAR LAKE AND DIRKSEN, 3.11' OFF BACK OF CURB.
- 9933  
EL 585.35  
REBAR WITH CAP @ NE CORNER OF CLEAR LAKE AND HILL ST, 3.13' OFF BACK OF CURB.

SEE INTERSECTION GEOMETRIC SHEETS 167-175 FOR INTERSECTION ANGLES

SHEET 2 OF 2

REVISIONS		ILLINOIS DEPARTMENT OF TRANSPORTATION
NAME	DATE	
		<b>HORIZONTAL ALIGNMENT PLAN AND BENCHMARKS</b>  SCALE: 1"=200' DATE 7/13/05 DRAWN BY NJV CHECKED BY PBB