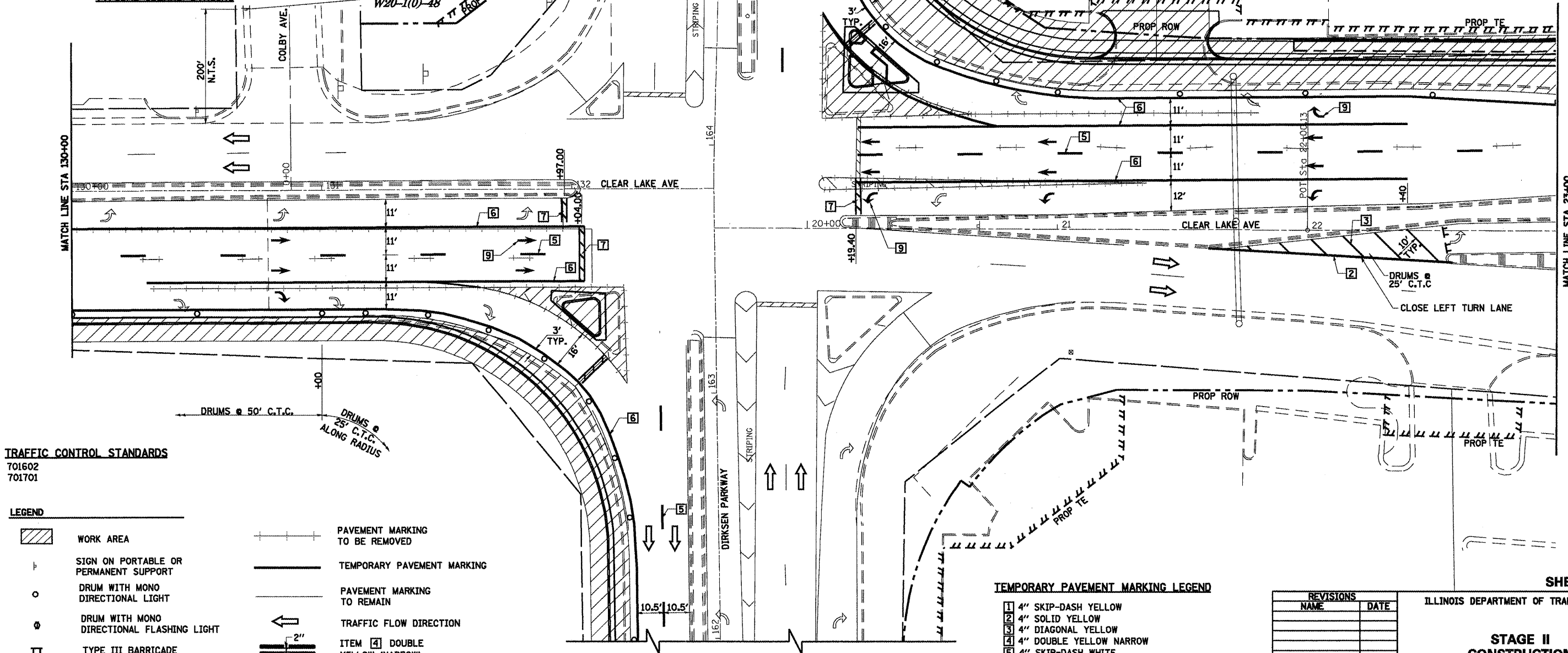
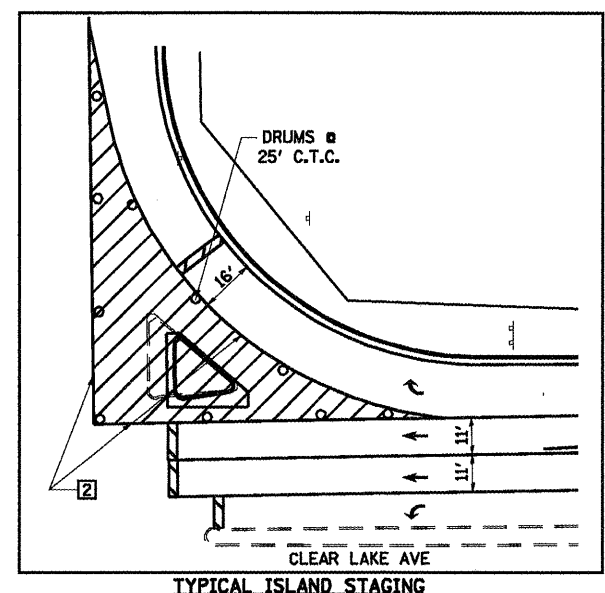
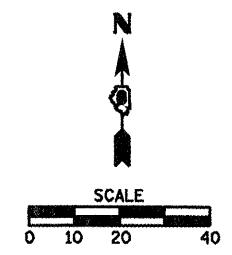


F.A.P. RTE.	SECTION	COUNTY	TOTAL SHEETS	SHEET NO.
.	..	SANGAMON	363	36
STA. TO STA.				
FED. ROAD DIST. NO.	ILLINOIS	FED. AID PROJECT		
CONTRACT NO. 72088				



TRAFFIC CONTROL STANDARDS
 701602
 701701

LEGEND

	WORK AREA		PAVEMENT MARKING TO BE REMOVED
	SIGN ON PORTABLE OR PERMANENT SUPPORT		TEMPORARY PAVEMENT MARKING
	DRUM WITH MONO DIRECTIONAL LIGHT		PAVEMENT MARKING TO REMAIN
	DRUM WITH MONO DIRECTIONAL FLASHING LIGHT		TRAFFIC FLOW DIRECTION
	TYPE III BARRICADE		ITEM 4 DOUBLE YELLOW (NARROW)

6' TYP 2' TYP 10' TYP 30' TYP 10' TYP

TEMPORARY PAVEMENT MARKING LEGEND

1	4" SKIP-DASH YELLOW
2	4" SOLID YELLOW
3	4" DIAGONAL YELLOW
4	4" DOUBLE YELLOW NARROW
5	4" SKIP-DASH WHITE
6	4" SOLID WHITE
7	24" STOP BAR WHITE
8	4" DIAGONAL WHITE
9	LETTERS & SYMBOLS

REVISIONS

NAME	DATE

ILLINOIS DEPARTMENT OF TRANSPORTATION

STAGE II CONSTRUCTION

SCALE: VERT. 1/05 DRAWN BY NJV
 HORIZ. CHECKED BY CWG