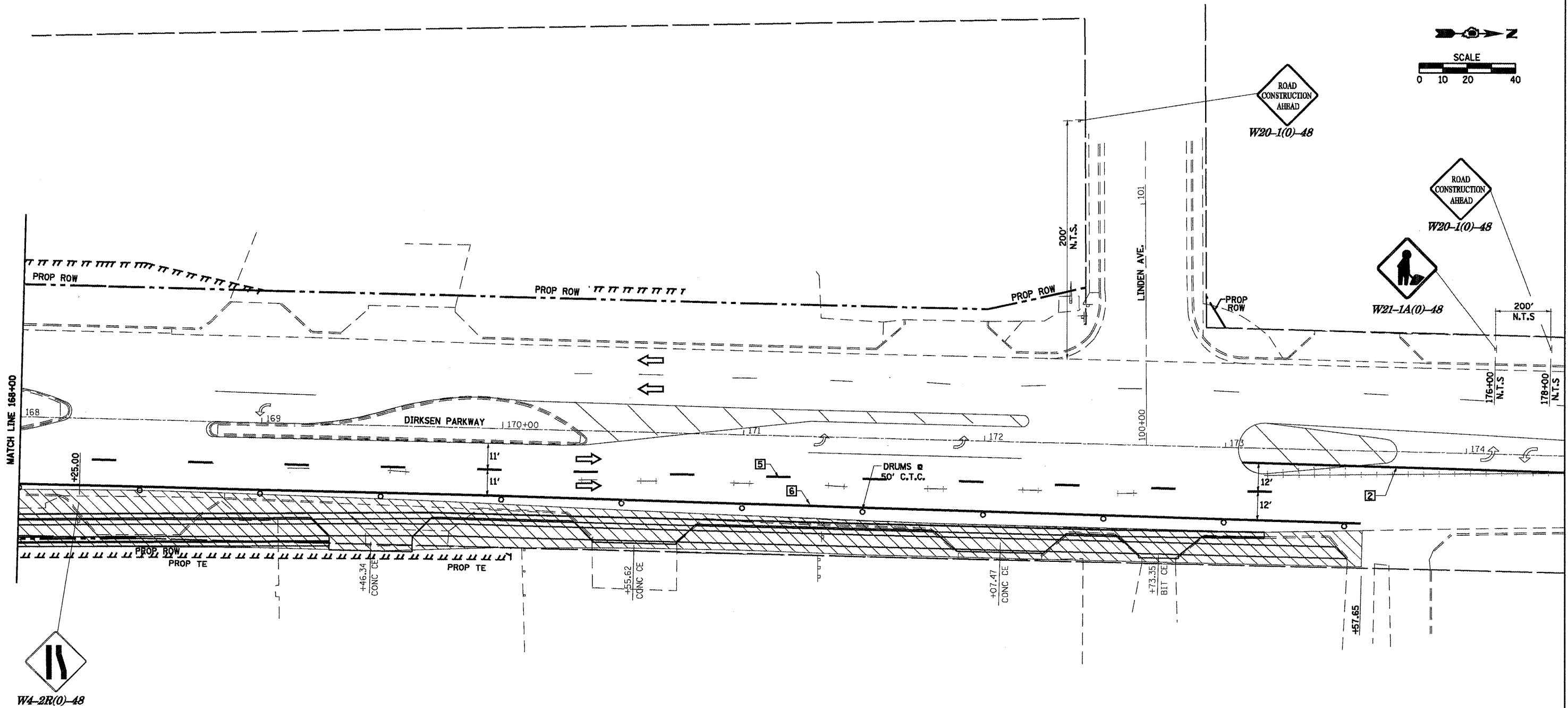
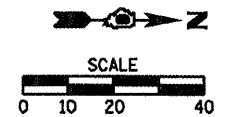


F.A.P. RTE.	SECTION	COUNTY	TOTAL SHEETS	SHEET NO.
..	..	SANGAMON	363	42
STA.		TO STA.		
FED. ROAD DIST. NO.	ILLINOIS	FED. AID PROJECT		
CONTRACT NO. 72088				



LEGEND

	WORK AREA
	SIGN ON PORTABLE OR PERMANENT SUPPORT
	DRUM WITH MONO DIRECTIONAL LIGHT
	DRUM WITH MONO DIRECTIONAL FLASHING LIGHT
	TYPE III BARRICADE
	TRAFFIC FLOW DIRECTION

	PAVEMENT MARKING TO BE REMOVED
	TEMPORARY PAVEMENT MARKING
	PAVEMENT MARKING TO REMAIN
	ITEM [4] DOUBLE YELLOW (NARROW)

6' TYP 2' TYP 10' TYP 30' TYP 10' TYP

TEMPORARY PAVEMENT MARKING LEGEND

1	4" SKIP-DASH YELLOW
2	4" SOLID YELLOW
3	4" DIAGONAL YELLOW
4	4" DOUBLE YELLOW NARROW
5	4" SKIP-DASH WHITE
6	4" SOLID WHITE
7	24" STOP BAR WHITE
8	4" DIAGONAL WHITE
9	LETTERS & SYMBOLS

TRAFFIC CONTROL STANDARDS
701602

REVISIONS	
NAME	DATE

ILLINOIS DEPARTMENT OF TRANSPORTATION

STAGE II CONSTRUCTION

SCALE: VERT. 1/05 DATE 1/05 DRAWN BY NJV CHECKED BY CWG