

LEGEND

- WORK AREA
- SIGN ON PORTABLE OR PERMANENT SUPPORT
- DRUM WITH MONO DIRECTIONAL LIGHT
- DRUM WITH MONO DIRECTIONAL FLASHING LIGHT
- TYPE III BARRICADE

- PAVEMENT MARKING TO BE REMOVED
- TEMPORARY PAVEMENT MARKING
- PAVEMENT MARKING TO REMAIN
- TRAFFIC FLOW DIRECTION
- ITEM 4 DOUBLE YELLOW (NARROW)

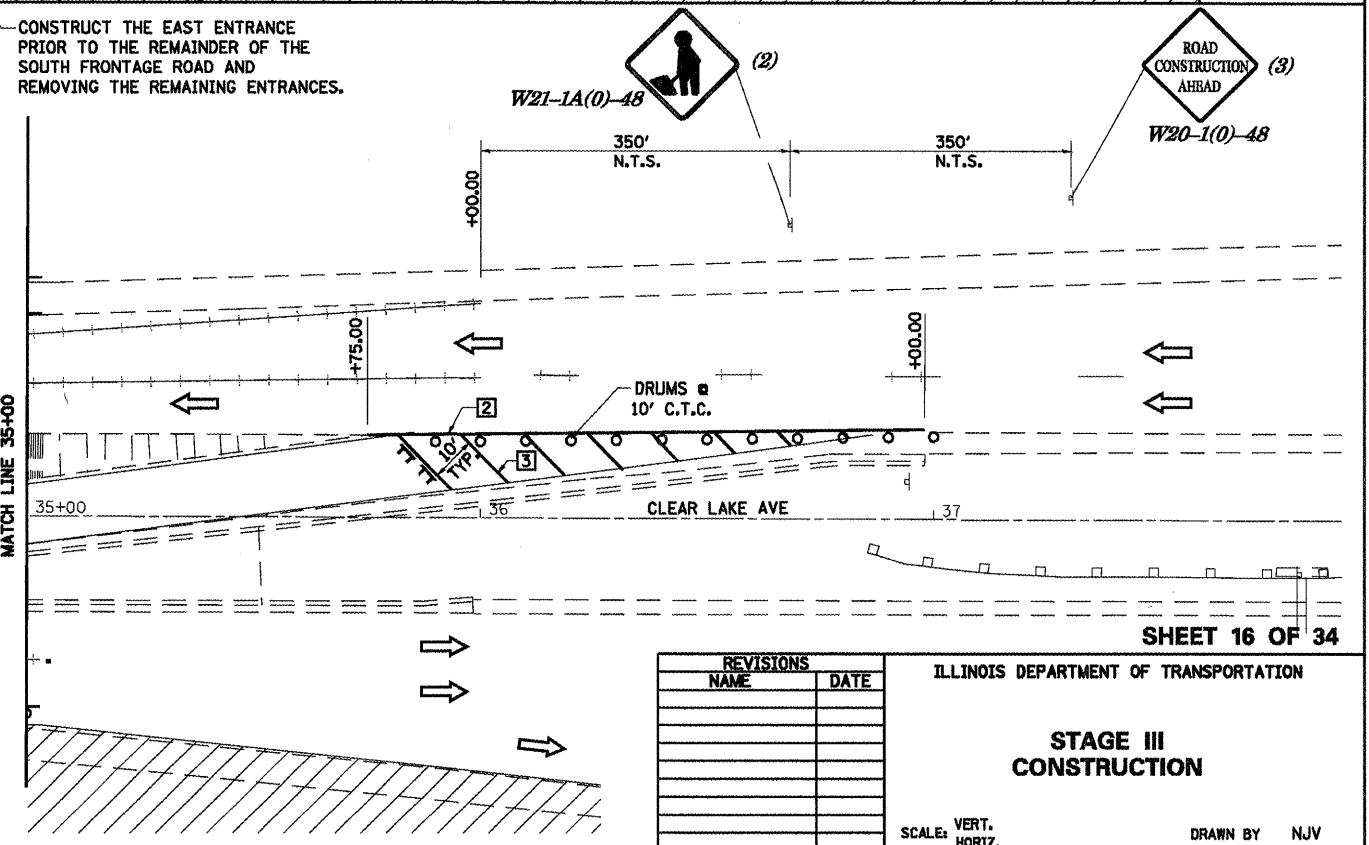
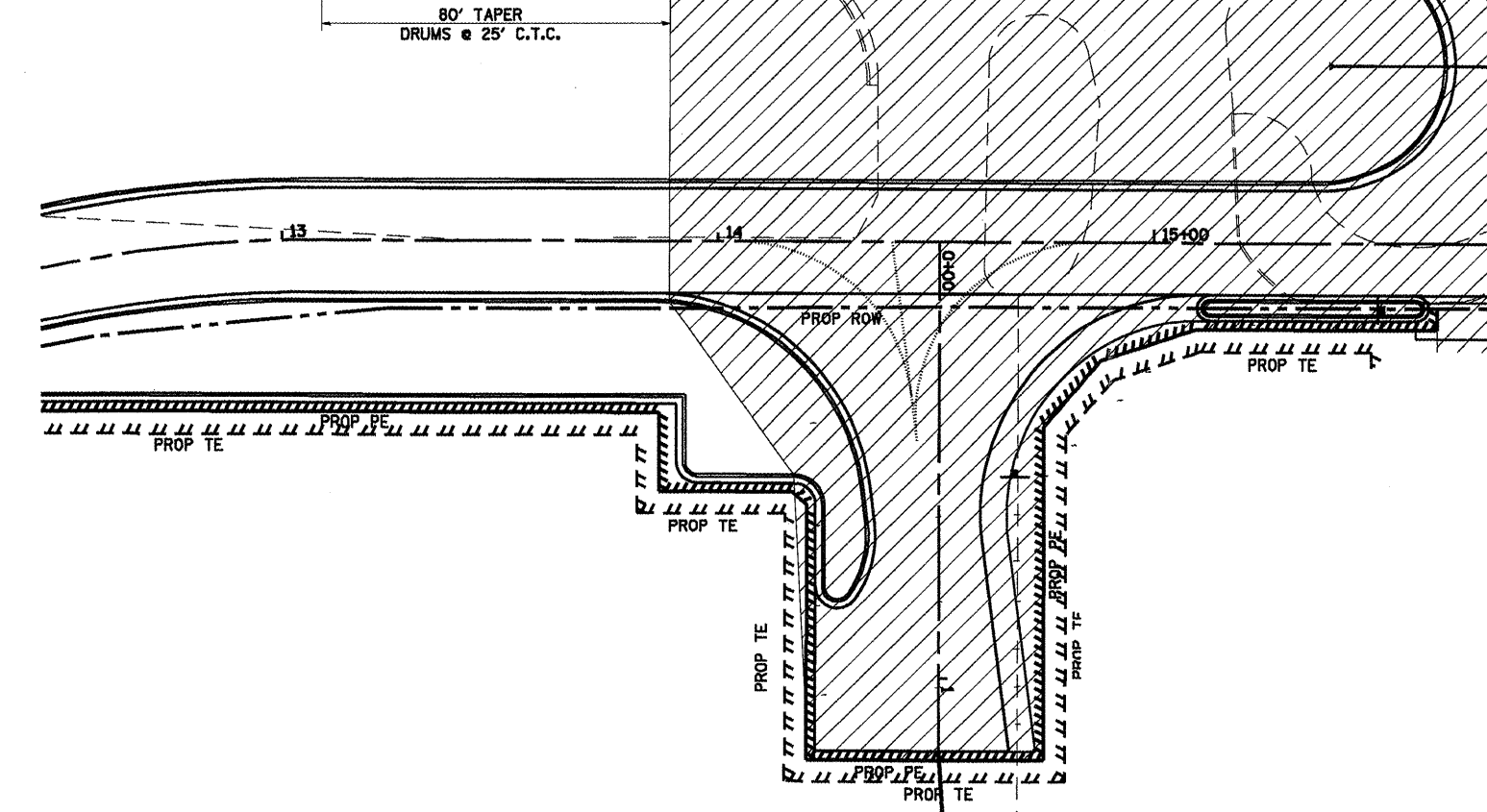
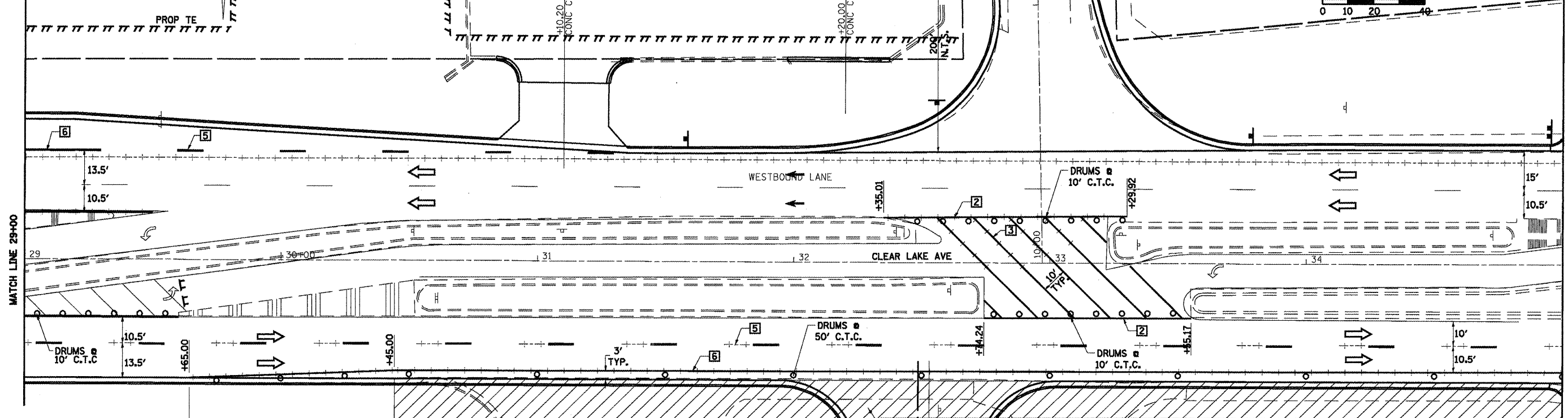
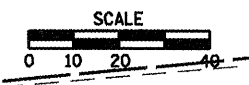
- TEMPORARY PAVEMENT MARKING LEGEND**
- 1 4" SKIP-DASH YELLOW
 - 2 4" SOLID YELLOW
 - 3 4" DIAGONAL YELLOW
 - 4 4" DOUBLE YELLOW NARROW
 - 5 4" SKIP-DASH WHITE
 - 6 4" SOLID WHITE
 - 7 24" STOP BAR WHITE
 - 8 4" DIAGONAL WHITE

TRAFFIC CONTROL STANDARDS
701602



* F.A.P. T2, F.A.P. 67, F.A.P. 75 & F.A.P. 668
** D-6 SPFLD-CLRLAKE DIRKSEN 2002

F.A.P. RTE.	SECTION	COUNTY	TOTAL SHEETS	SHEET NO.
..	..	SANGAMON	363	48
STA. TO STA.				
FED. ROAD DIST. NO.		ILLINOIS FED. AID PROJECT		
CONTRACT NO. 72088				



REVISIONS	
NAME	DATE

ILLINOIS DEPARTMENT OF TRANSPORTATION
STAGE III CONSTRUCTION
SCALE: VERT. 1/8"=1'-0"
 HORIZ. 1/4"=1'-0"
DATE: 1/05
DRAWN BY: NJV
CHECKED BY: CWG

SHEET 16 OF 34