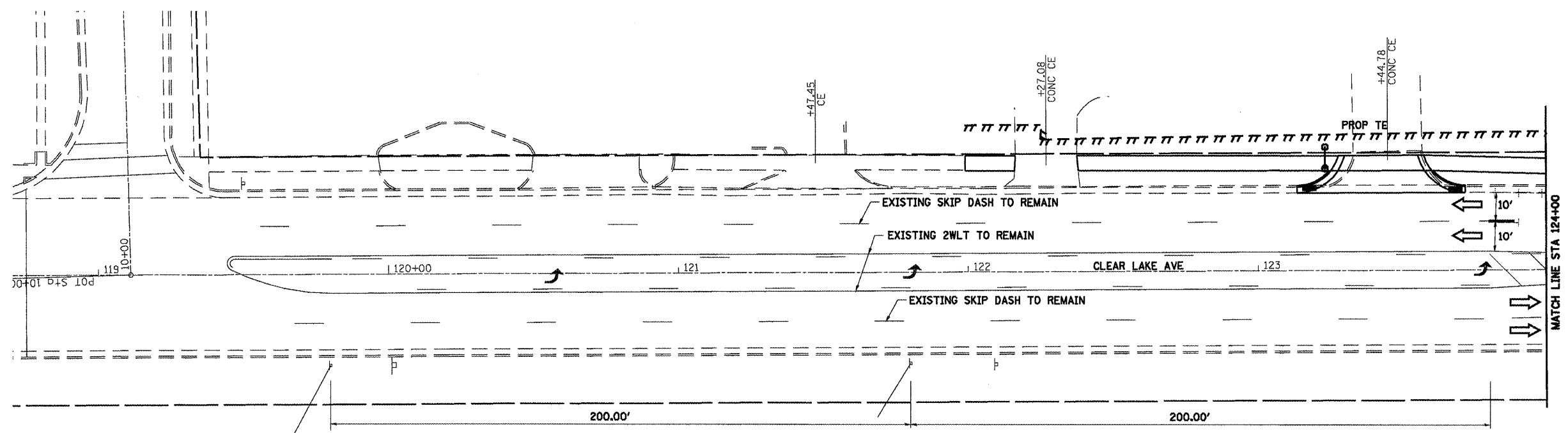
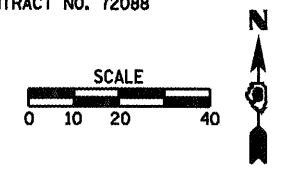


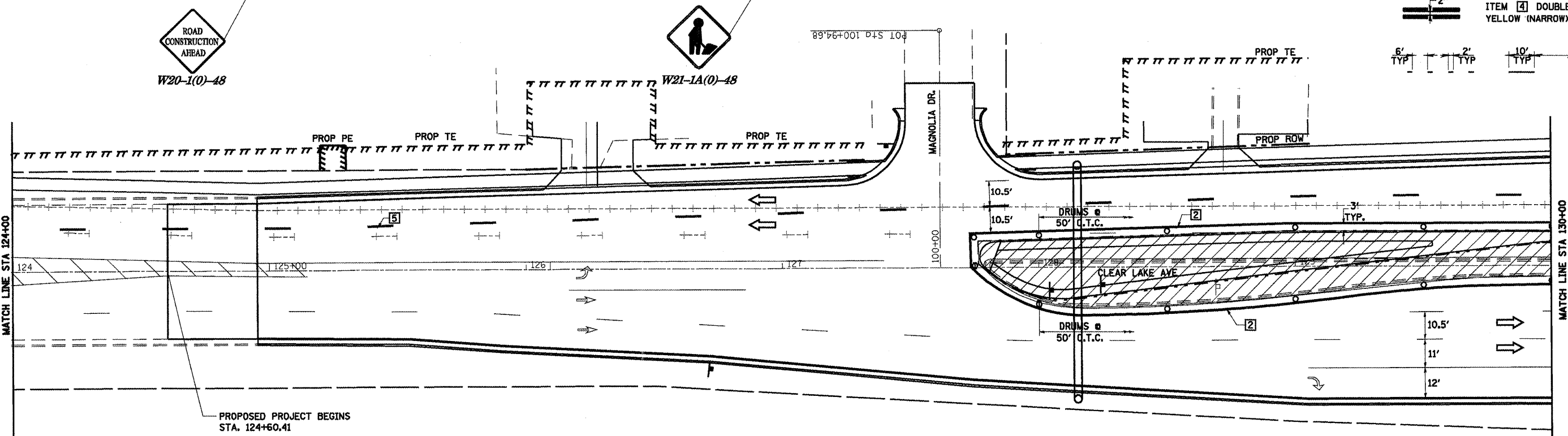
F.A.P. RTE.	SECTION	COUNTY	TOTAL SHEETS	SHEET NO.
*	**	SANGAMON	363	55
STA.		TO STA.		
FED. ROAD DIST. NO.	ILLINOIS	FED. AID PROJECT		
CONTRACT NO. 72088				



LEGEND

- WORK AREA
- SIGN ON PORTABLE OR PERMANENT SUPPORT
- DRUM WITH MONO DIRECTIONAL LIGHT
- DRUM WITH MONO DIRECTIONAL FLASHING LIGHT
- TYPE III BARRICADE
- TRAFFIC FLOW DIRECTION
- PAVEMENT MARKING TO BE REMOVED
- TEMPORARY PAVEMENT MARKING
- PAVEMENT MARKING TO REMAIN
- ITEM [4] DOUBLE YELLOW (NARROW)

6' TYP 2' TYP 10' TYP 30' TYP 10' TYP



ROAD CONSTRUCTION AHEAD
 W20-1(0)-48

W21-1A(0)-48

PROPOSED PROJECT BEGINS
 STA. 124+60.41

TRAFFIC CONTROL STANDARDS
 701601

TEMPORARY PAVEMENT MARKING LEGEND

- 1 4" SKIP-DASH YELLOW
- 2 4" SOLID YELLOW
- 3 4" DIAGONAL YELLOW
- 4 4" DOUBLE YELLOW NARROW
- 5 4" SKIP-DASH WHITE
- 6 4" SOLID WHITE
- 7 24" STOP BAR WHITE
- 8 4" DIAGONAL WHITE

REVISIONS	
NAME	DATE

ILLINOIS DEPARTMENT OF TRANSPORTATION

STAGE IV CONSTRUCTION

SCALE: VERT. 1/05 DRAWN BY NJV
 DATE CHECKED BY CWG