

**LEGEND**

- WORK AREA
- SIGN ON PORTABLE OR PERMANENT SUPPORT
- DRUM WITH MONO DIRECTIONAL LIGHT
- DRUM WITH MONO DIRECTIONAL FLASHING LIGHT
- TYPE III BARRICADE
- TRAFFIC FLOW DIRECTION
- PAVEMENT MARKING TO BE REMOVED
- TEMPORARY PAVEMENT MARKING
- PAVEMENT MARKING TO REMAIN
- ITEM [4] DOUBLE YELLOW (NARROW)

- 6' TYP
- 2' TYP
- 10' TYP
- 30' TYP
- 10' TYP

**TEMPORARY PAVEMENT MARKING LEGEND**

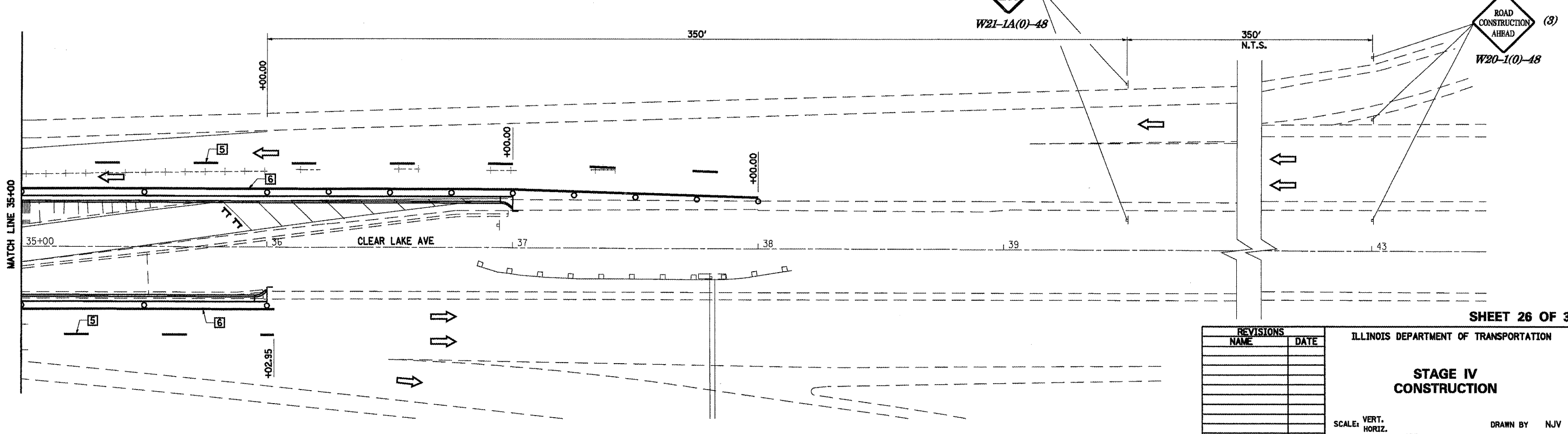
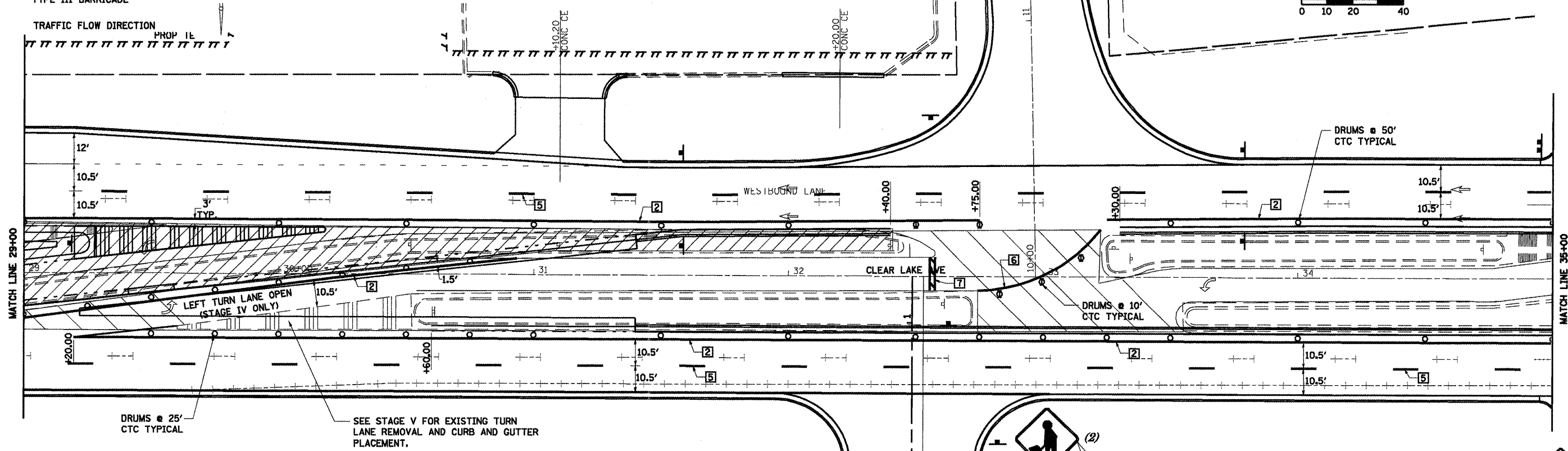
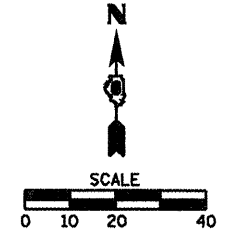
- 1 4" SKIP-DASH YELLOW
- 2 4" SOLID YELLOW
- 3 4" DIAGONAL YELLOW
- 4 4" DOUBLE YELLOW NARROW
- 5 4" SKIP-DASH WHITE
- 6 4" SOLID WHITE
- 7 24" STOP BAR WHITE
- 8 4" DIAGONAL WHITE

**TRAFFIC CONTROL STANDARDS**

701602

F.A.P. 72, F.A.P. 67, F.A.P. 75 & F.A.P. 668  
 D-6 SPFLD-CLRLAKE DIRKSEN 2002

F.A.P. RTE.	SECTION	COUNTY	TOTAL SHEETS	SHEET NO.
..	..	SANGAMON	363	58
STA.	TO STA.			
FED. ROAD DIST. NO.	ILLINOIS FED. AID PROJECT			
CONTRACT NO. 72088				



SHEET 26 OF 34

REVISIONS	
NAME	DATE

ILLINOIS DEPARTMENT OF TRANSPORTATION  
**STAGE IV CONSTRUCTION**  
 SCALE: VERT. 1/05  
 DATE: 1/05  
 DRAWN BY: NJV  
 CHECKED BY: CWG