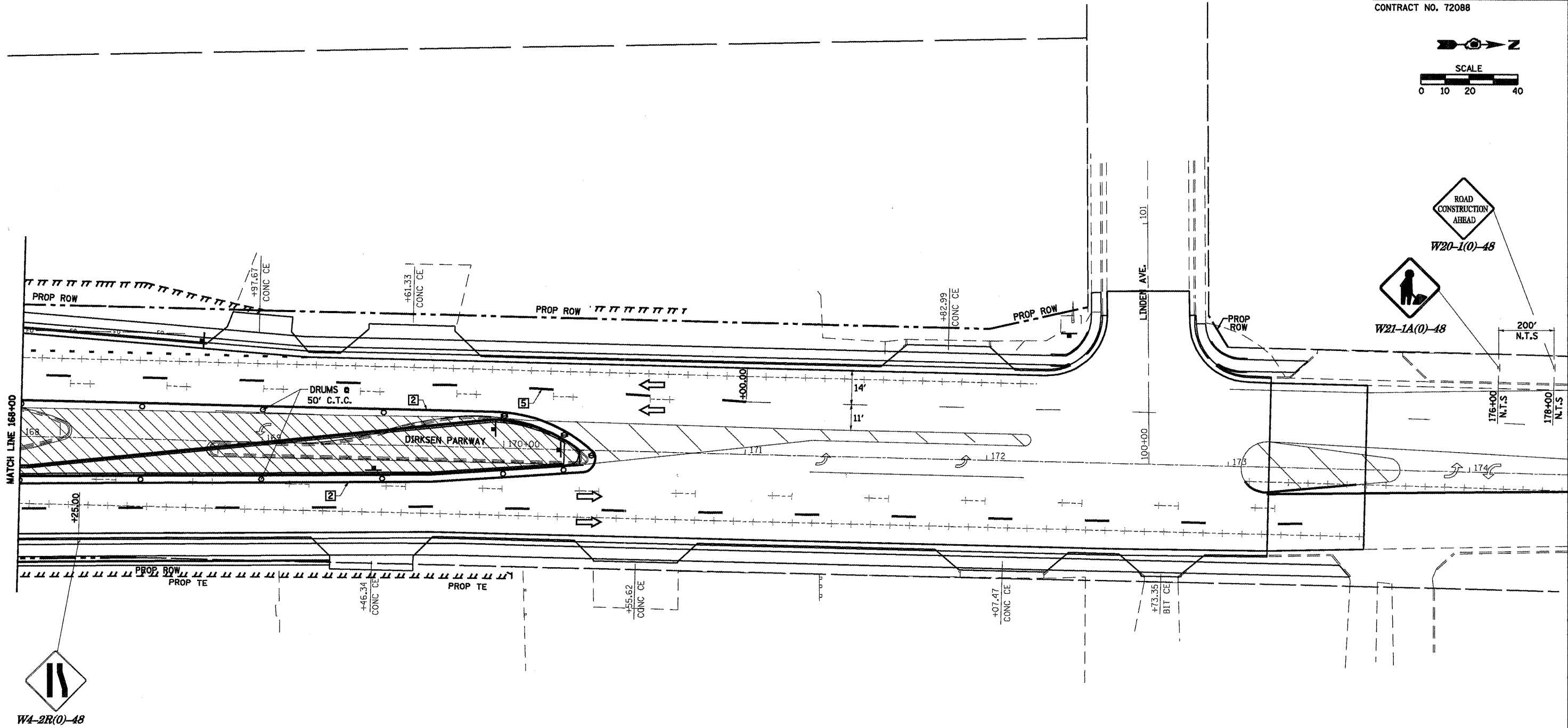
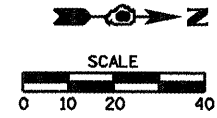


F.A.P. RTE.	SECTION	COUNTY	TOTAL SHEETS	SHEET NO.
	**	SANGAMON	363	62
STA.	TO STA.			
FED. ROAD DIST. NO.	ILLINOIS FED. AID PROJECT			
CONTRACT NO. 72088				



**LEGEND**

- WORK AREA
- SIGN ON PORTABLE OR PERMANENT SUPPORT
- DRUM WITH MONO DIRECTIONAL LIGHT
- DRUM WITH MONO DIRECTIONAL FLASHING LIGHT
- TYPE III BARRICADE
- TRAFFIC FLOW DIRECTION
- PAVEMENT MARKING TO BE REMOVED
- TEMPORARY PAVEMENT MARKING
- PAVEMENT MARKING TO REMAIN
- ITEM [4] DOUBLE YELLOW (NARROW)

**TEMPORARY PAVEMENT MARKING LEGEND**

- 1 4" SKIP-DASH YELLOW
- 2 4" SOLID YELLOW
- 3 4" DIAGONAL YELLOW
- 4 4" DOUBLE YELLOW NARROW
- 5 4" SKIP-DASH WHITE
- 6 4" SOLID WHITE
- 7 24" STOP BAR WHITE
- 8 4" DIAGONAL WHITE

TRAFFIC CONTROL STANDARDS  
 701602 701601

REVISIONS	
NAME	DATE

ILLINOIS DEPARTMENT OF TRANSPORTATION  
**STAGE IV CONSTRUCTION**  
 SCALE: VERT. 1"=20'  
 HORIZ. 1"=40'  
 DATE 1/05  
 DRAWN BY NJV  
 CHECKED BY CWG