

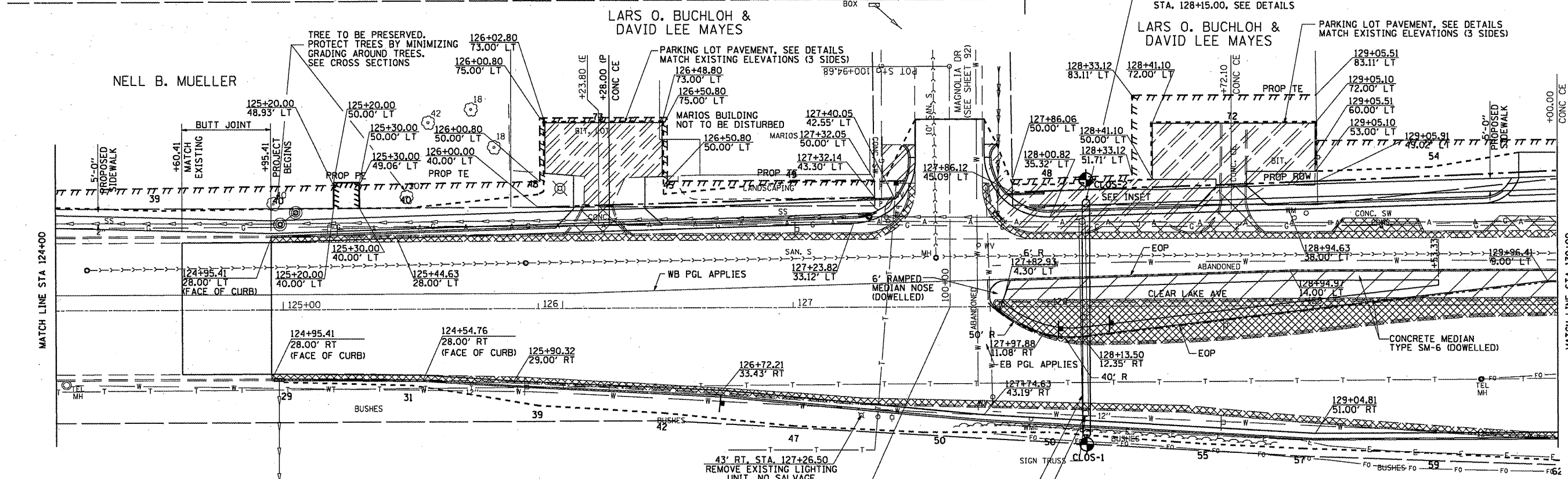
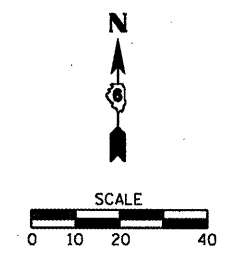
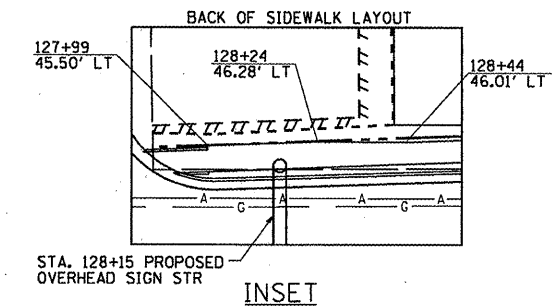
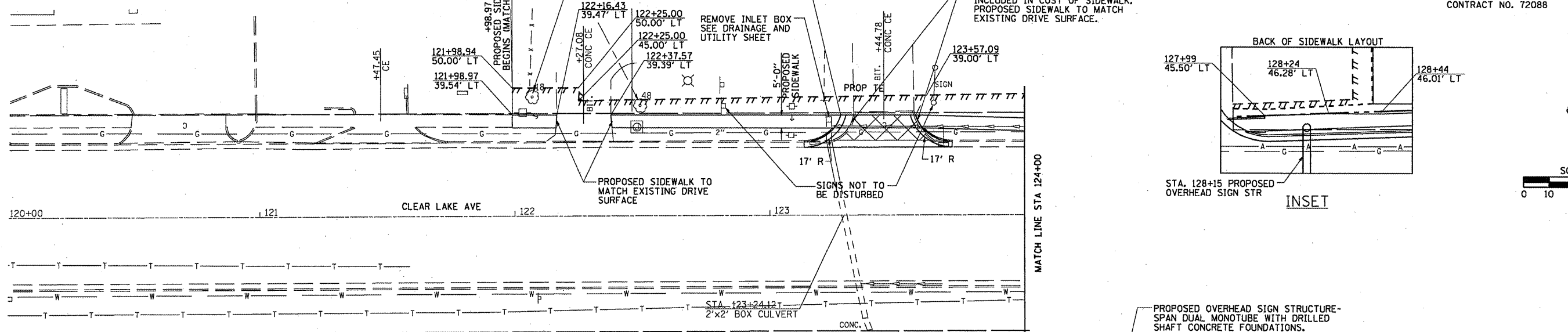
SEC 25, T16N, R5W, 3RD PM

GRANT F. MUELLER

NELL B. MUELLER

F.A.P. RTE. SECTION COUNTY TOTAL SHEETS SHEET NO.
* F.A.I. 72, F.A.P. 67, F.A.P. 75 & F.A.P. 668
** D-6 SPFLD-CLRLAKE DIRKSEN 2002

F.A.P. RTE.	SECTION	COUNTY	TOTAL SHEETS	SHEET NO.
*	**	SANGAMON	363	67
STA. 120+00.00		TO STA. 130+00.00		
FED. ROAD DIST. NO.		ILLINOIS FED. AID PROJECT		
CONTRACT NO. 72088				



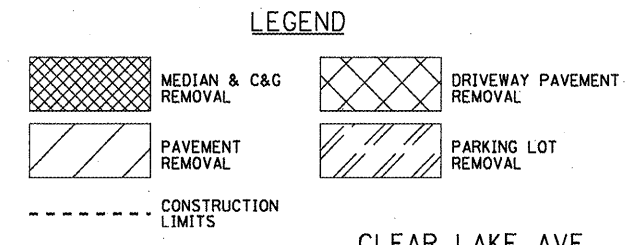
SPECIAL SIDEWALK ELEVATIONS

STATION	RT EDGE	LT EDGE
124+50	587.54	587.64
125+00	587.71	587.61
125+50	588.11	588.01
126+00	588.98	589.08

43' RT. STA. 127+26.50
REMOVE EXISTING LIGHTING UNIT, NO SALVAGE

STA 127+61.61 (CLEAR LAKE AVE)
STA 100+00.00 (MAGNOLIA DR)

SPRINGFIELD PARK DISTRICT



SEC 36, T16N, R5W, 3RD PM

CLEAR LAKE AVE