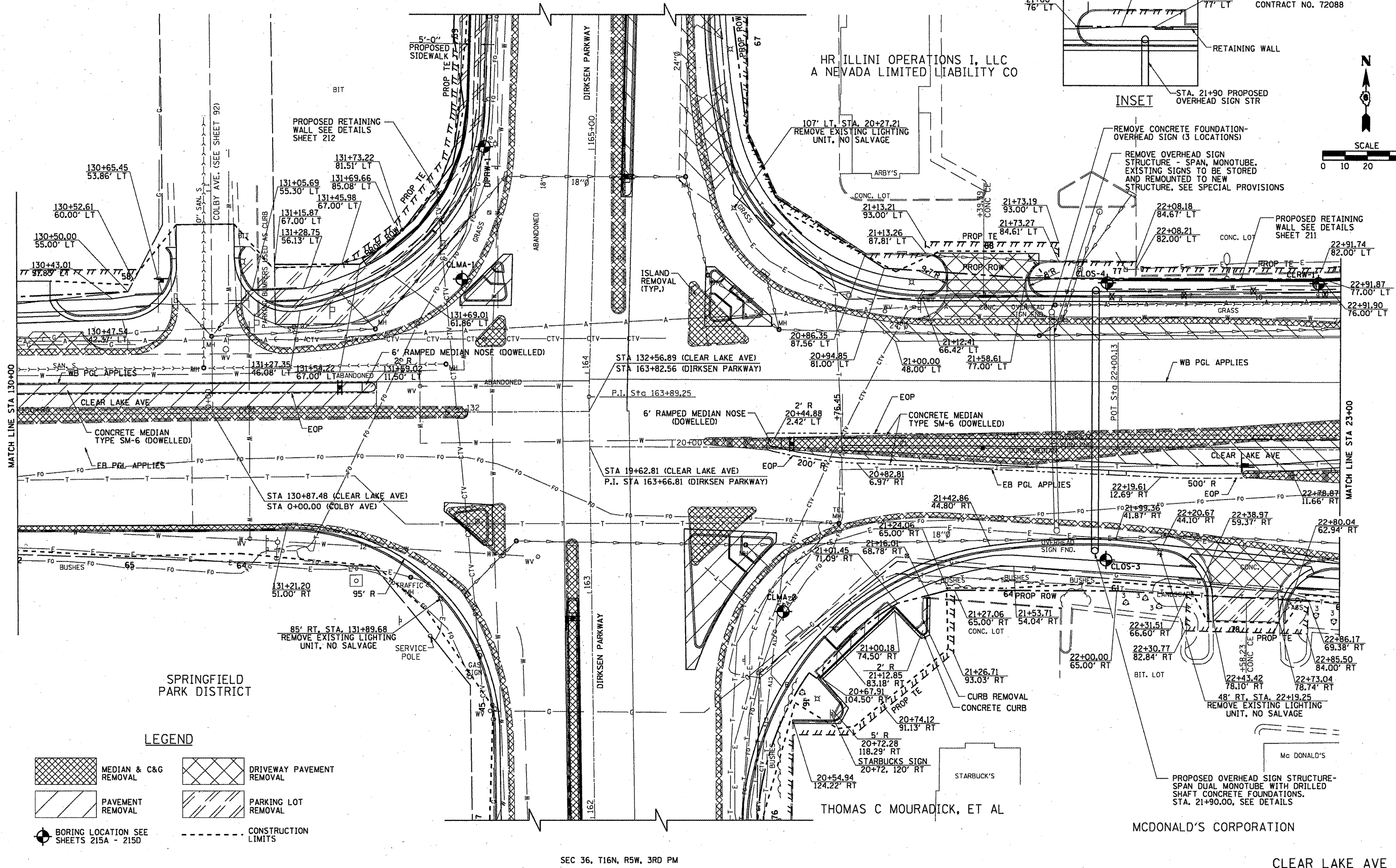
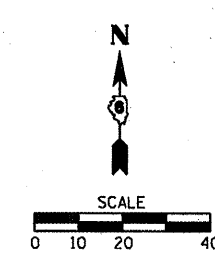
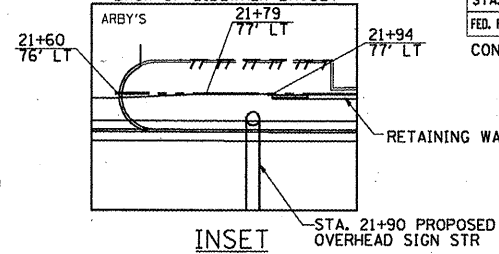


SEC 25, T16N, R5W, 3RD PM

F.A. RTE.	SECTION	COUNTY	TOTAL SHEETS	SHEET NO.
** D-6 SPFLD-CLRLAKE DIRKSEN 2002	**	SANGAMON	363	69
STA. 130+00.00		TO STA. 23+00.00		
FED. ROAD DIST. NO.	ILLINOIS	FED. AID PROJECT		
CONTRACT NO. 72088				



LEGEND

- MEDIAN & C&G REMOVAL
- DRIVEWAY PAVEMENT REMOVAL
- PAVEMENT REMOVAL
- PARKING LOT REMOVAL
- BORING LOCATION SEE SHEETS 215A - 215D
- CONSTRUCTION LIMITS

SEC 36, T16N, R5W, 3RD PM