

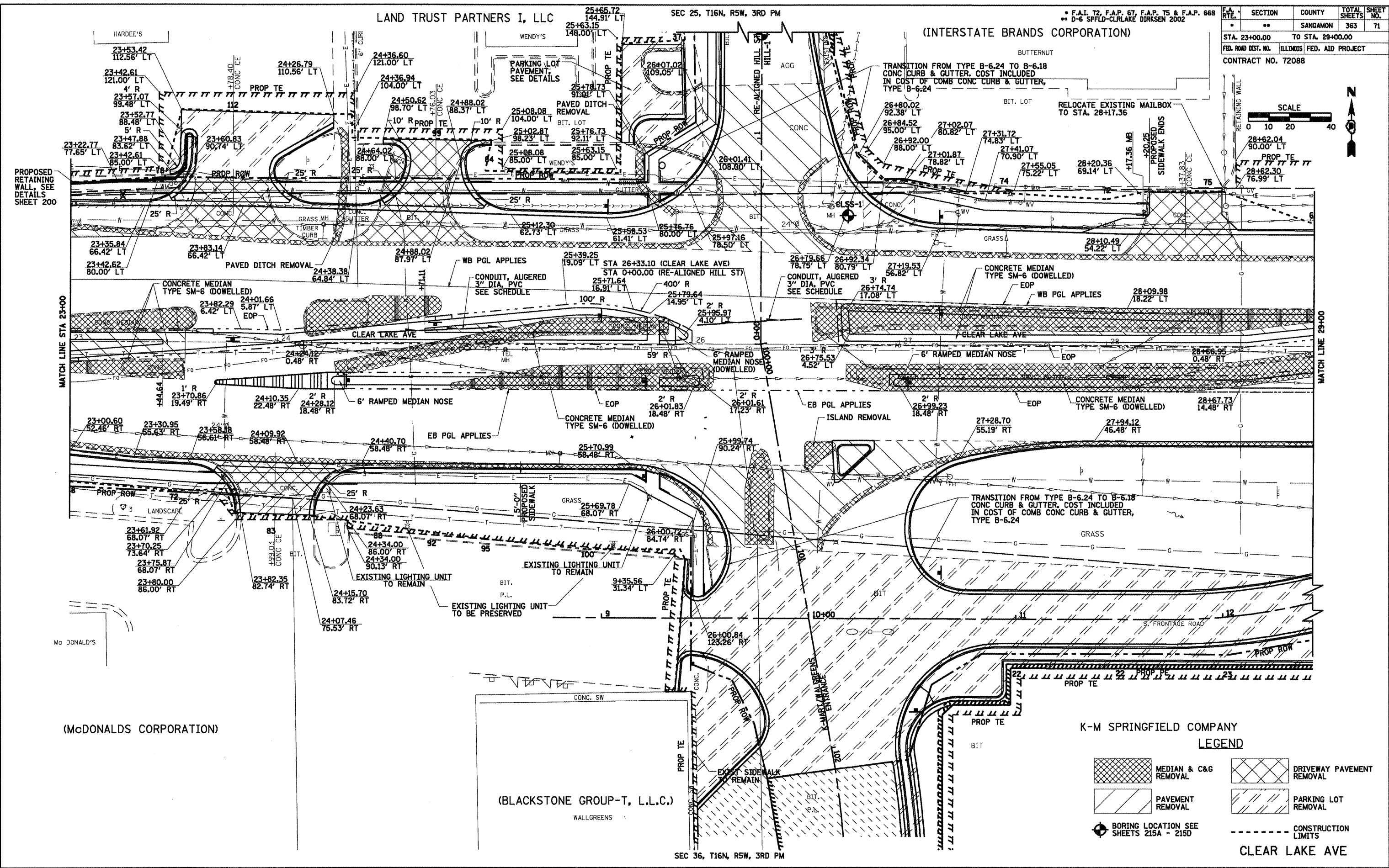
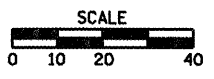
LAND TRUST PARTNERS I, LLC

SEC 25, T16N, R5W, 3RD PM

(INTERSTATE BRANDS CORPORATION)

F.A.I. T2, F.A.P. 67, F.A.P. T5 & F.A.P. 668  
D-6 SPFLD-CLRLAKE DIRKSEN 2002

F.A. RTE.	SECTION	COUNTY	TOTAL SHEETS	SHEET NO.
..	..	SANGAMON	363	71
STA. 23+00.00 TO STA. 29+00.00				
FED. ROAD DIST. NO. ILLINOIS FED. AID PROJECT				
CONTRACT NO. 72088				



K-M SPRINGFIELD COMPANY  
LEGEND

- MEDIAN & C&G REMOVAL
- DRIVEWAY PAVEMENT REMOVAL
- PAVEMENT REMOVAL
- PARKING LOT REMOVAL
- BORING LOCATION SEE SHEETS 215A - 215D
- CONSTRUCTION LIMITS

CLEAR LAKE AVE