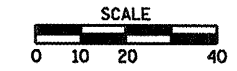


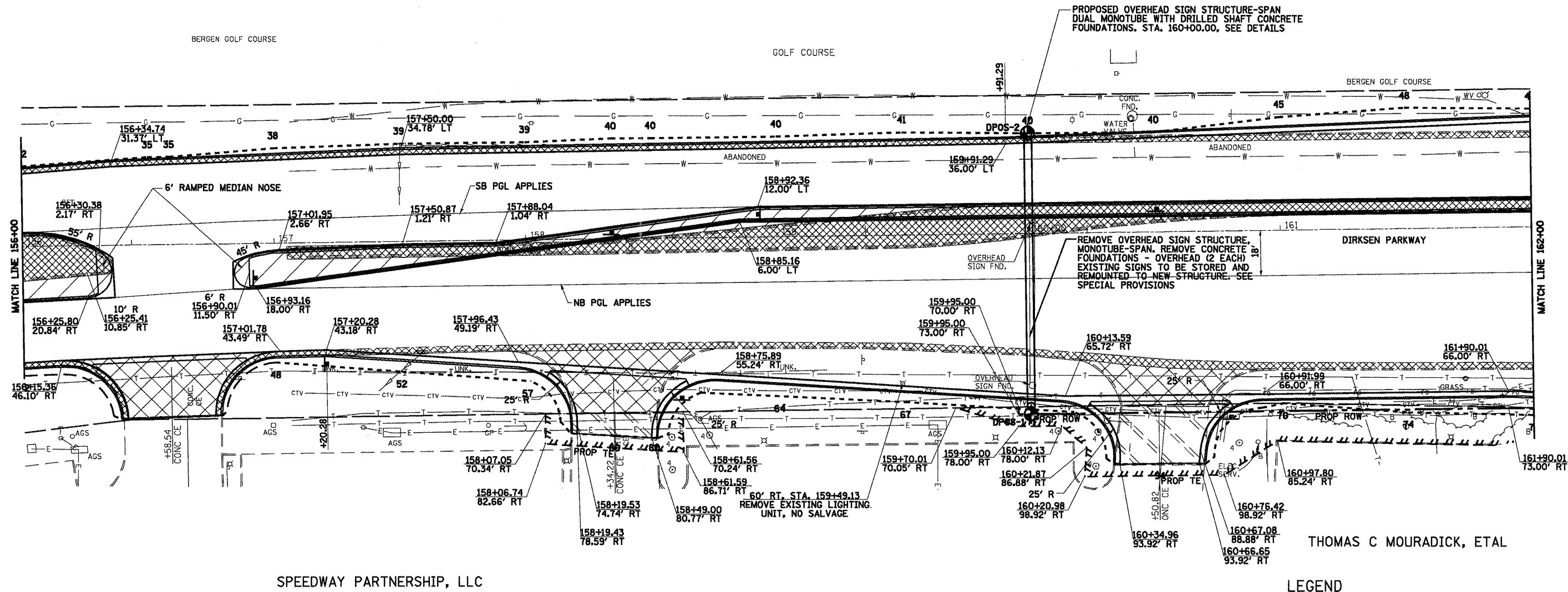
F.A.I. 72, F.A.P. 67, F.A.P. 75 & F.A.P. 668  
 \*\* D-6 SPFLD-CLRLAKE DIRKSEN 2002

| F.A. RTE.           | SECTION | COUNTY            | TOTAL SHEETS     | SHEET NO. |
|---------------------|---------|-------------------|------------------|-----------|
| *                   | **      | SANGAMON          | 363              | 84        |
| STA. 156+00.00      |         | TO STA. 162+00.00 |                  |           |
| FED. ROAD DIST. NO. |         | ILLINOIS          | FED. AID PROJECT |           |
| CONTRACT NO. 72088  |         |                   |                  |           |



SEC 36, T16N, R5W, 3RD PM

SPRINGFIELD  
 PARK DISTRICT



THOMAS C MOURADICK, ETAL

SPEEDWAY PARTNERSHIP, LLC

JP MORGAN CHASE BANK

LEGEND

- MEDIAN & C&G REMOVAL
- DRIVEWAY PAVEMENT REMOVAL
- PAVEMENT REMOVAL
- PARKING LOT REMOVAL
- CONSTRUCTION LIMITS
- BORING LOCATION SEE SHEET 215A - 215D

DIRKSEN PARKWAY